

# *Nevada State Shooting Range Directory*

*Nevada Department of Wildlife  
Hunter Education*



Note: This directory only identifies public ranges and not the many private and commercial ranges in Nevada.

# Caliente Shooting Range

**Facility Name:** City of Caliente Shooting Range

**Location:** Located on the upper part of the industrial park, about 300 yards west of the town of Caliente, Nevada (may be relocated within a year)

**Directions:** Travelling south on U.S. 93 into Caliente turn right 1/2 mile before the city, turn right again into the parking lot. The covers and benches are visible from the highway.

**Hours of Operation:** The rifle and pistol range is open and unstaffed.

**Contact for Information:** City Hall - (775) 786-9986



# Capitol City Gun Club

**Facility Name:** Capitol City Gun Club

**Location:** 3590 Arrowhead Dr., Carson City, Nevada

**Directions:** Turn east, off of U.S. 395, onto Arrowhead Dr. and follow Arrowhead Dr. east until it turns south past the airport on the right. The golf course is in the distance, against the hill on the left and the gun club is on the left between two warehouses. A large sign marks the entrance to the club.

**Hours of Operation:** Capitol City Gun Club is open Wednesdays-Sundays, 10 a.m. - 9 p.m.

**Contact for Information:** (775) 882-9904



# Carson City Rifle and Pistol Range

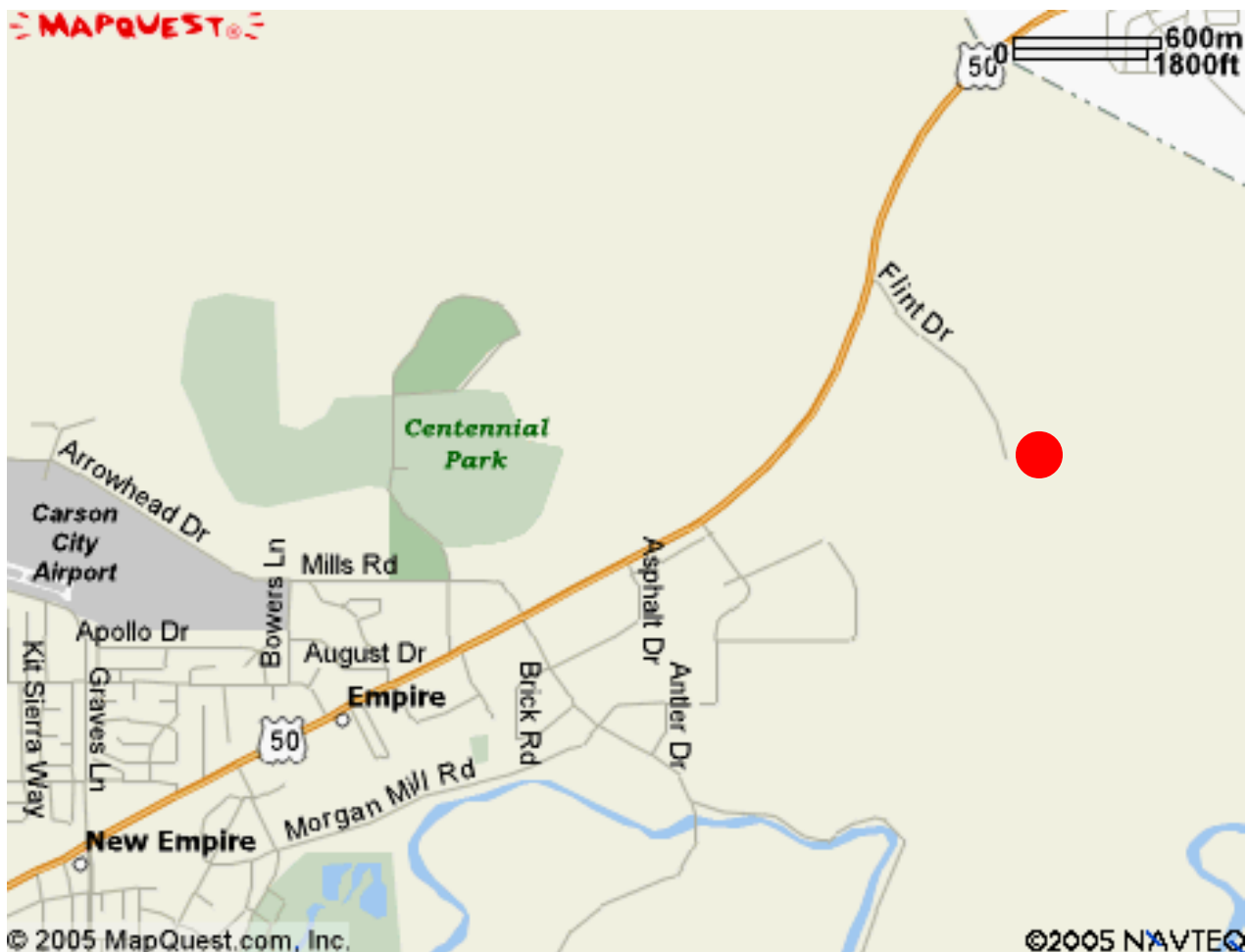
**Facility Name:** Carson City

**Location:** Flint Drive, Carson City, Nevada

**Directions:** Turn east, off of U.S. 395 onto U.S. 50. Drive east on U.S. 50 nearly to the end of the valley and turn right on Flint Drive. Flint Drive becomes a dirt road which winds down the canyon to the shooting range.

**Hours of Operation:** The rifle and pistol shooting area is open every day dawn to dusk

**Contact for Information:** Ken Chambers - (775) 882-1190



# Douglas County Shooting Range

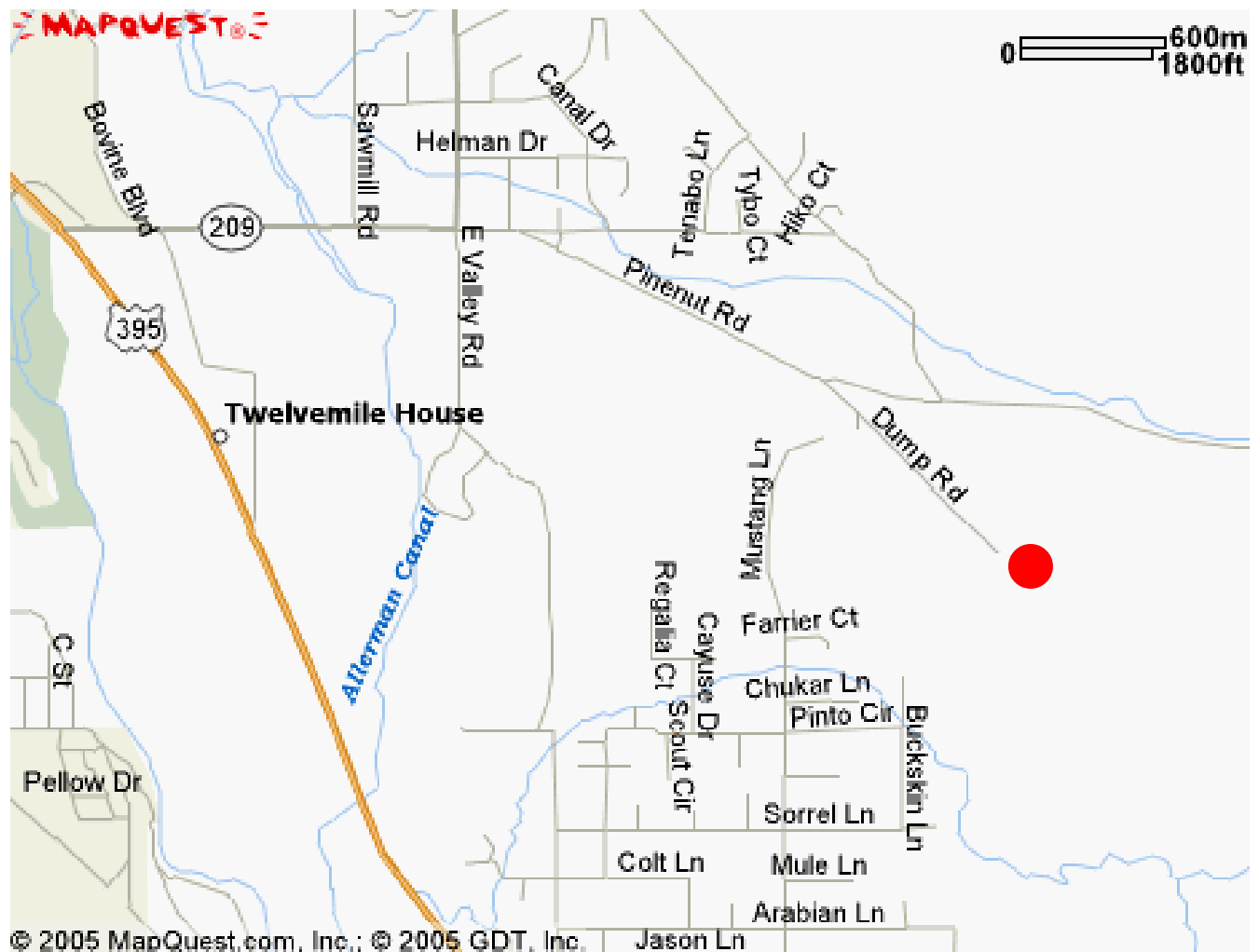
**Facility Name:** Douglas County Shooting Range

**Location:** 298 Exit on I-80, Elko, Nevada

**Directions:** Located to the right of the Douglas County Transfer Station. Take 395 south from Gardnerville to SR 209. Turn left on 209 to Pinenut Rd. Take an easy right on Pinenut Rd. to Dump Rd. Take another easy right on Dump Rd. Follow Dump Rd. approximately 2/3 of a mile to the transfer station and follow the shooting range road off to the right.

**Hours of Operation:** The shooting range fees are paid at the transfer station gate and hours of operation are the same as the transfer station..

**Contact for Information:** Douglas County Sheriff's Office - (775) 782-9901



# Elko Shooting Range

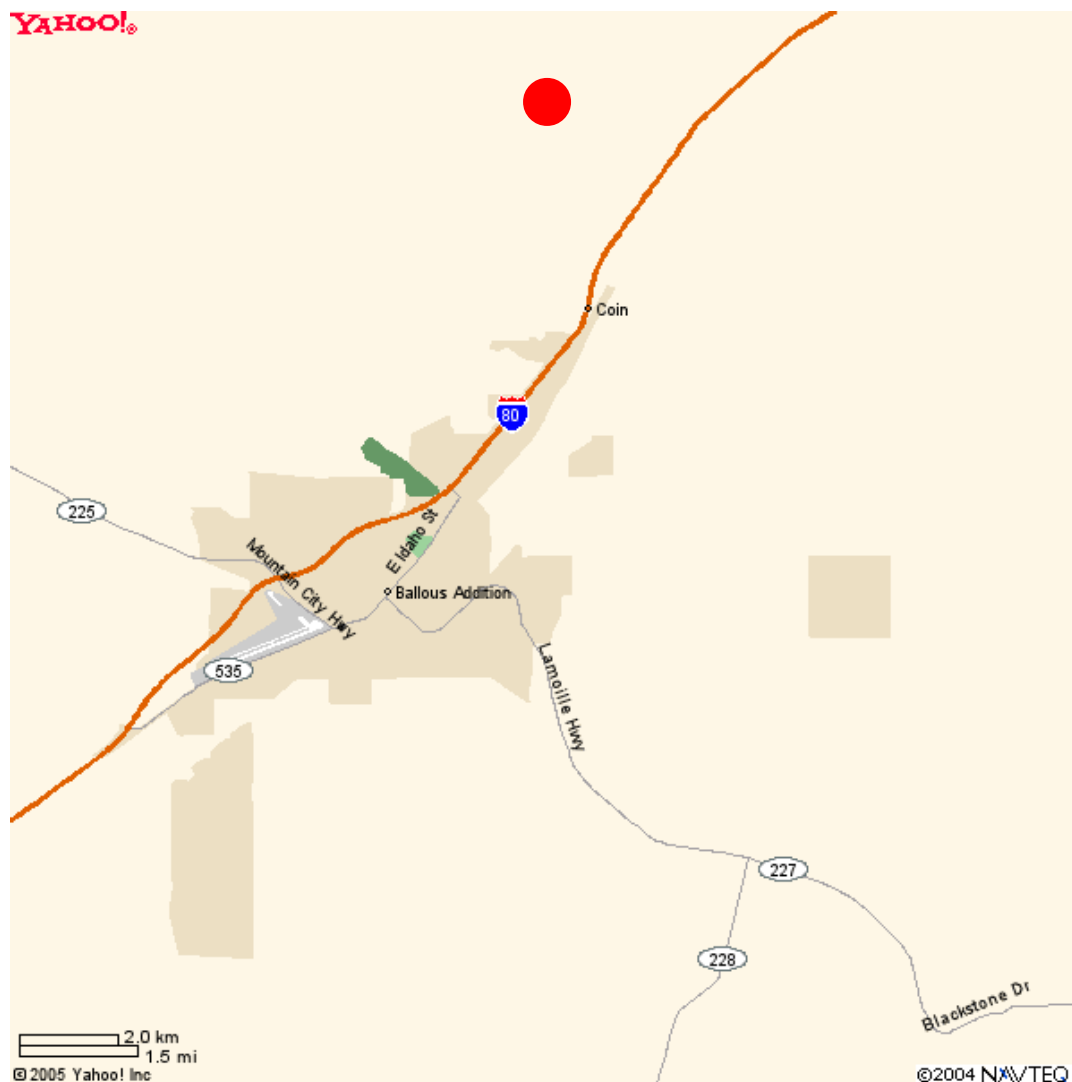
**Facility Name:** Elko Shooting Range

**Location:** 298 Exit on I-80, Elko, Nevada

**Directions:** Turn west from Elko on I-80 take Exit 298, turn west on a dirt frontage road for about a mile and a half and turn north for approximately a mile and a half.

**Hours of Operation:** The unstaffed rifle and pistol shooting area is open 24 hours.

**Contact for Information:** Danielle Kohler - (775) 753-8825



# Fallon Trap Club

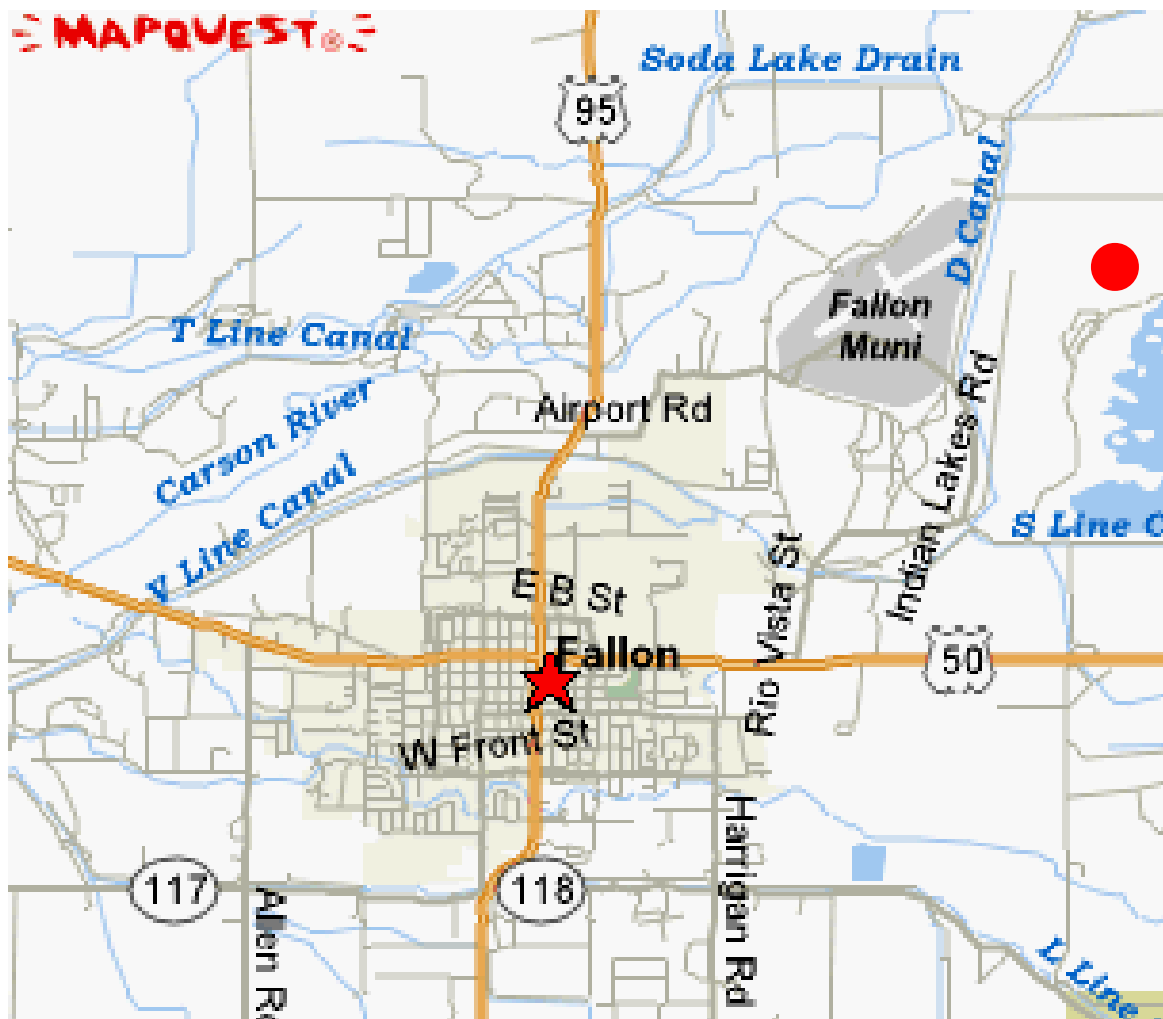
**Facility:** Fallon Trap Club

**Location:** Fallon, Nevada

**Directions:** Travel east from Fallon on U.S. 50 approximately one mile. Turn left (north) approximately one mile to the range on the northeast side of Rattlesnake Hill.

**Hours of Operation:** The trap club is open every Tuesday, Thursday from 1 p.m. to end of shooting and Sunday from 1 p.m. to end of shooting.

**Contact for Information:** Greg Tanner - (775) 867-2298



# Flying Saucer Trap Club

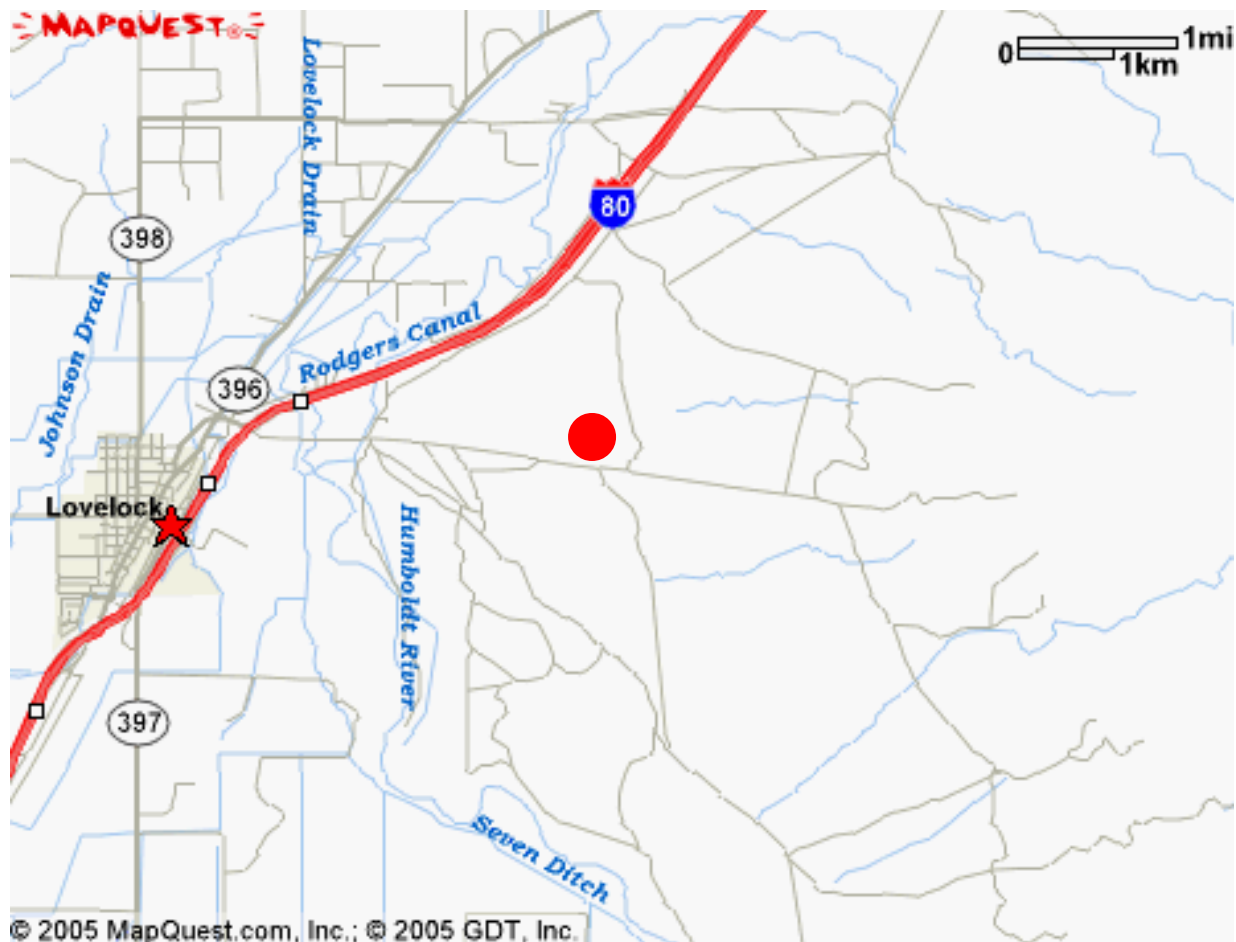
**Facility Name:** Flying Saucer Trap Club

**Location:** , Lovelock, Nevada

**Directions:** Follow Cornell Ave. north through town and over the freeway where it becomes Airport Rd. Stay on this road past the rodeo grounds after about a mile the pavement ends. Proceed on the gravel road for another mile and the range is on the left-hand side of the road.

**Hours of Operation:** The trap club is open by appointment, during regularly scheduled shoots and by appointment.

**Contact for Information:** Bing Westner Jr. - (775) 273-7237



# Lyon County Archery Range

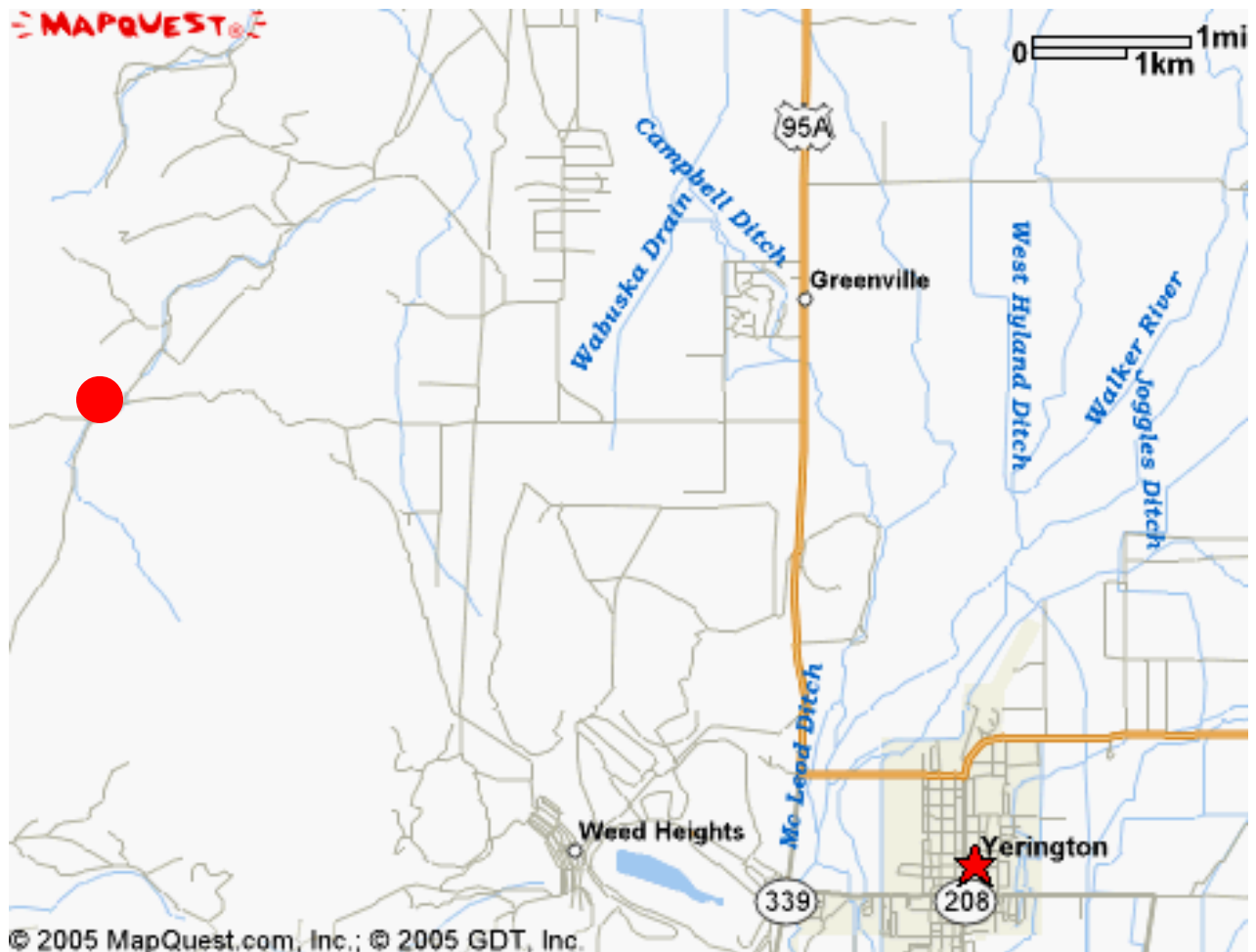
**Facility Name:** Lyon County Archery Range

**Location:** Luzier Ln., Yerington, Nevada

**Directions:** Turn west, off of U.S. 95, onto Luzier Ln. Travel west on Luzier Ln. to the foot of the mountain.

**Hours of Operation:** The archery range is open by appointment and for shooting events.

**Contact for Information:** John Evasavic (775) 463-3046



# Mason Valley Trap Club

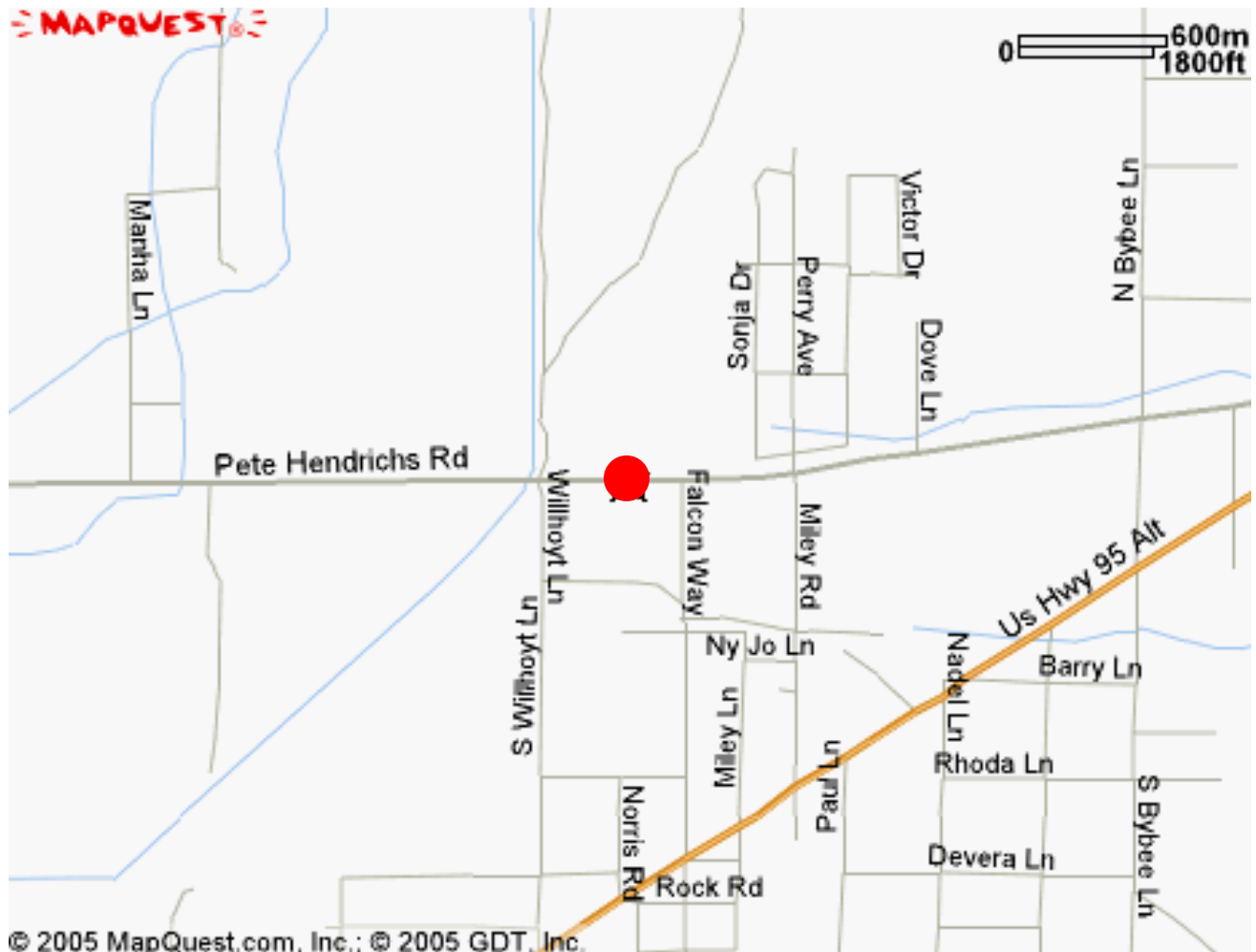
**Facility Name:** Mason Valley Trap Club

**Location:** 470 Pete Henrichs Rd., Yerington, Nevada, 89447

**Directions:** Eight miles east of Yerington off of 95, left on Pete Henrichs Rd.

**Hours of Operation:** By appointment - Practice Sundays, Tuesdays and Wednesdays noon to sundown. Club shoot first Sunday of each month February-August 9 a.m. - 5 p.m.. Last club shoot is a two-day championship. Membership fees Rifle, pistol and black powder range open at no charge - open daylight hours.

**Contact for Information:** John Evasavic (775) 463-3046 and Dick Goodwill 463-4419



# Washoe County Regional Shooting Facility

**Facility Name:** Washoe County Regional Shooting Facility

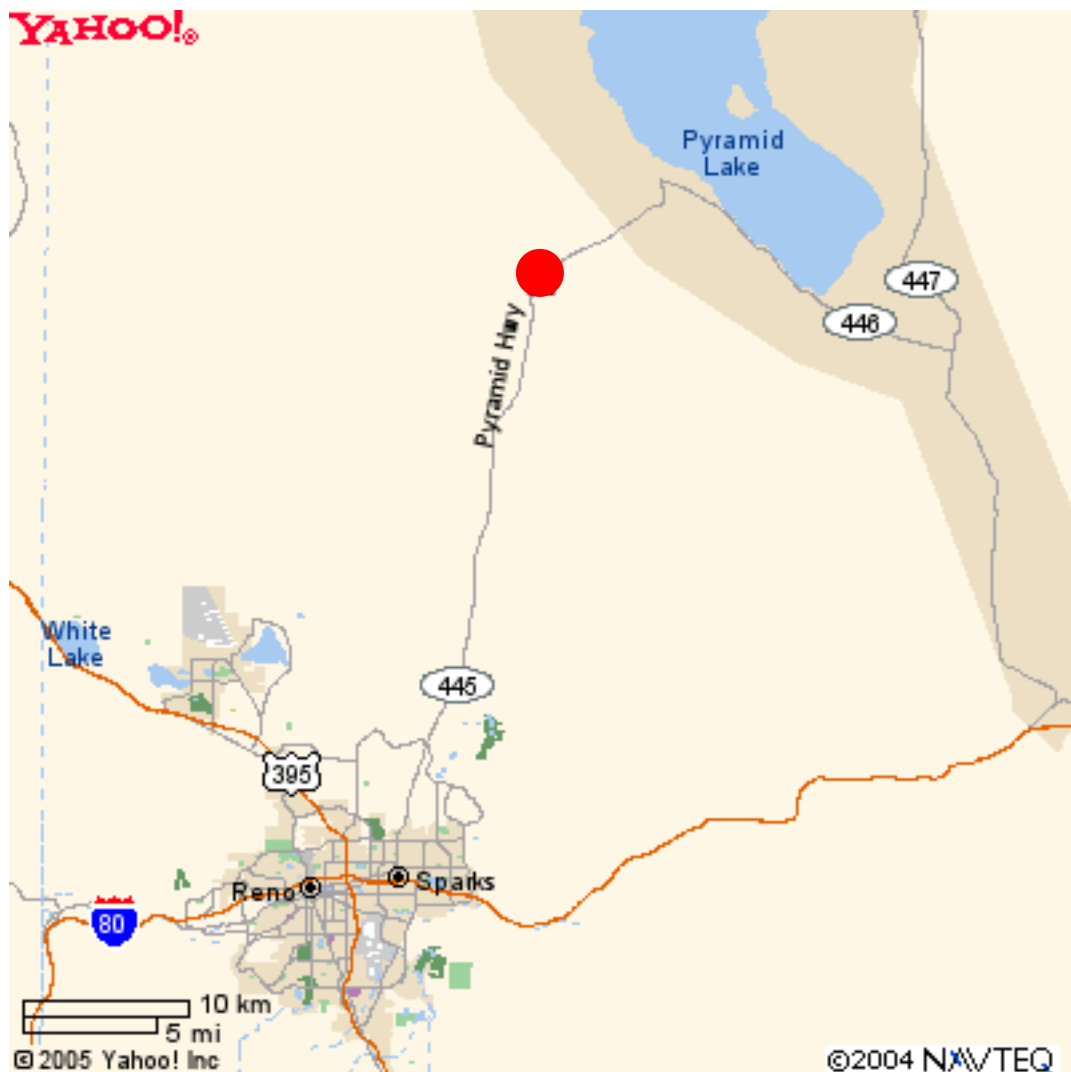
**Location:** Pyramid Hwy., north of Sparks, Nevada

**Directions:** Take Pyramid Hwy. north out of Sparks approximately 22 miles. The shooting range sign is on the left side of the road in the far, north end of Palamino Valley. Turn left on the dirt road at the sign and follow it to the range.

**Hours of Operation:** The rifle and pistol shooting area is open Friday-Monday from 8 a.m. to 4 p.m. Fees are \$6 for adults and \$3 for junior shooters.

A \$100 adult annual pass is available. Ear and eye protection, and targets available.

**Contact for Information:** Scott - (775) 475-2991



# Wells Gun Club

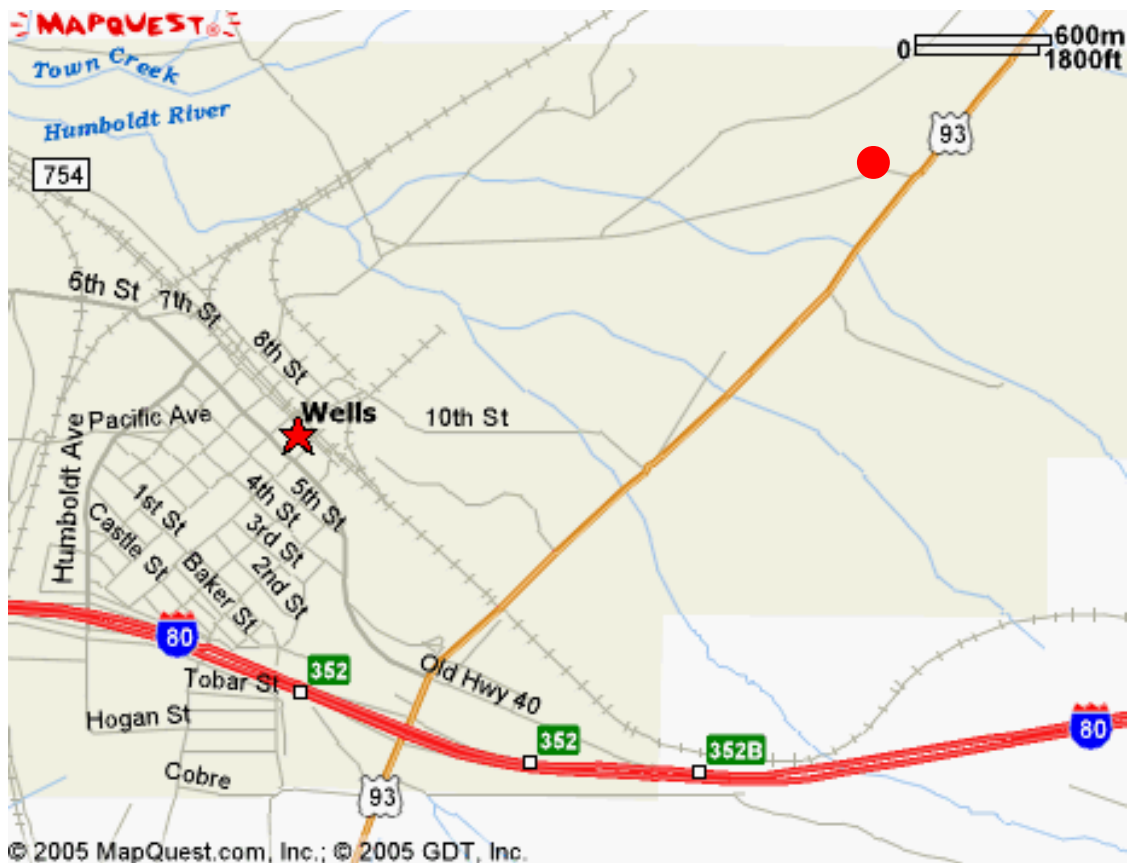
**Facility Name:** Wells Gun Club

**Location:** One mile north of the city of Wells, Nevada, on U.S. Highway 93

**Directions:** Drive north out of the city of Wells, for approximately one mile and the gun club will be on your left hand side

**Hours of Operation:** The rifle and pistol shooting area is open every day from 6 a.m. to dark. The trap range is operated one weekend a month on an irregular schedule. During winter months the trap range may be open twice a month.

**Contact for Information:** Chris Micheli - (775) 752-3795



# Winnemucca Shooting Range

**Facility Name:** Winnemucca Shooting Range

**Location:** 1/4 mile off Highway 95 at the Veterans Park exit

**Directions:** Turn left, off of U.S. 95 and follow the road west until it runs into the shooting range.

**Hours of Operation:** Open.

**Contact for Information:** Bill Deist, County Administrator - (775) 623-6300



# White Pine Shooting Range

**Facility Name:** White Pine Shooting Range

**Location:** 1 mile west of U.S. 93 2-3 miles north of Ely, Nevada

**Directions:** Follow the shooting range sign on U.S. 93 and turn east, off of the highway onto the road that goes to the racetrack. This road turns to gravel just past R&R Roofing. Fifty-yards past the racetrack, turn to the left onto another gravel road and follow it to the shooting range.

**Hours of Operation:** Open.

**Contact for Information:** Mel Anderson - (775) 289-4345

