

## 5.

### **COLD CREEK RESERVOIR**

History - Cold Creek Reservoir is a small, spring fed fishery located in northern Newark Valley. It was constructed in 1943 for irrigation purposes and is located both on public and private land.

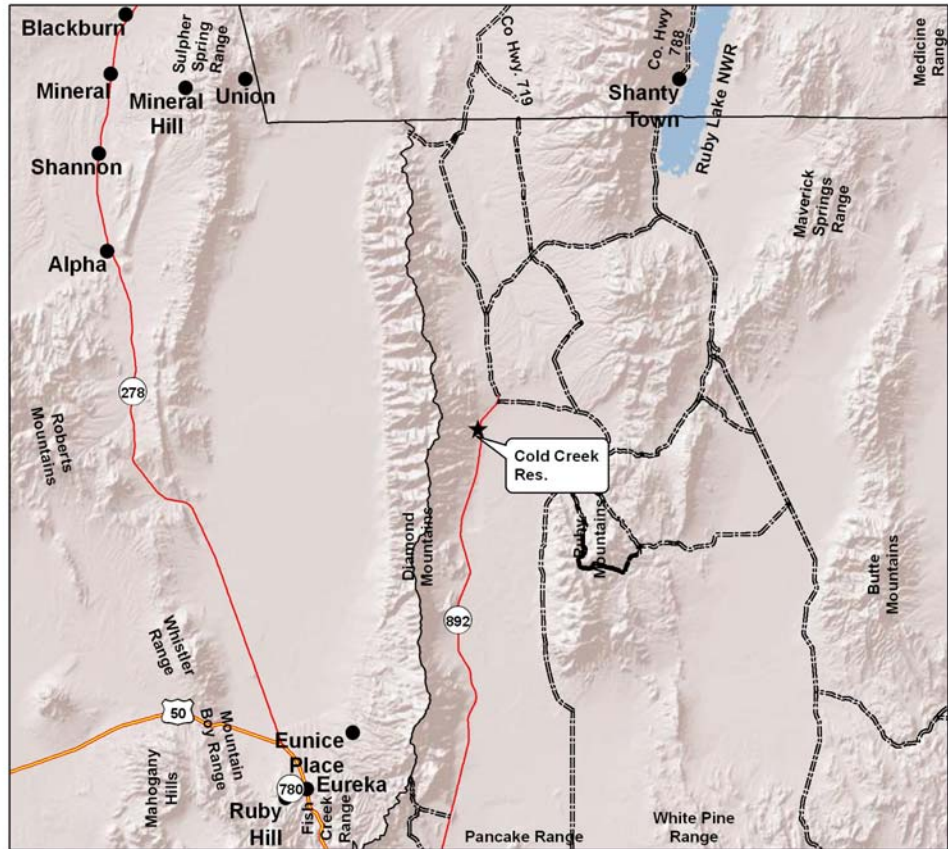
Pertinent Information - The Cold Creek complex consists of a main spring head with an outflow stream that feeds the two lower ponds. The lowest pond is considered to be the actual Cold Creek Reservoir and covers a total of 14 surface acres with a maximum depth of 24 feet. Along with a wild, spawning population of rainbow trout, hatchery rainbow are stocked annually to augment the population. Nongame fish include a nuisance population of tui chubs. A recent gill net survey of the reservoir found a ratio of 98:2 chubs to trout. The angler questionnaire survey in 2007 found an average catch rate of 3.41 fish per angler day. Fish average about 10.5 inches in length. Cold Creek is best fished from mid-spring through the summer, if levels are conducive. The normal baits - Power Bait, salmon eggs and worms, are most productive when fished off the bottom with a minimal amount of weight. Typical spinners (Mepps and Panther Martins) and/or a fly on a bubble are popular with many anglers. Nymphs and green or brown wooly buggers are the choice of the fly fishermen. Facilities: A primitive boat ramp is available on the main pond. No other facilities are available.

Stocking - Cold Creek Reservoir will receive 2,000, 9-inch rainbow trout in the spring and another 1,500 in the fall.

Regulations - Open year around, any hour of the day or night. The spring head and corresponding outflow stream are closed to fishing.

Biologist Forecast for 2009 - Cold Creek Reservoir never receives a great deal of fishing pressure due to its remote location. The lower pond is the only pond that presently contains water. The tui chub population can interfere with the trout angling.

Boating Regulations - No special boating regulations.



No warranty is made by the Nevada Department of Wildlife as to the accuracy, reliability, or completeness of these data for individual use or aggregate use with other data.

Access - From Ely, drive 62 miles west on Highway 50 to the junction of Star Route 892, then drive 34 miles north on Star Route 892 to Cold Creek Reservoir.