

13. RUBY LAKE NWR

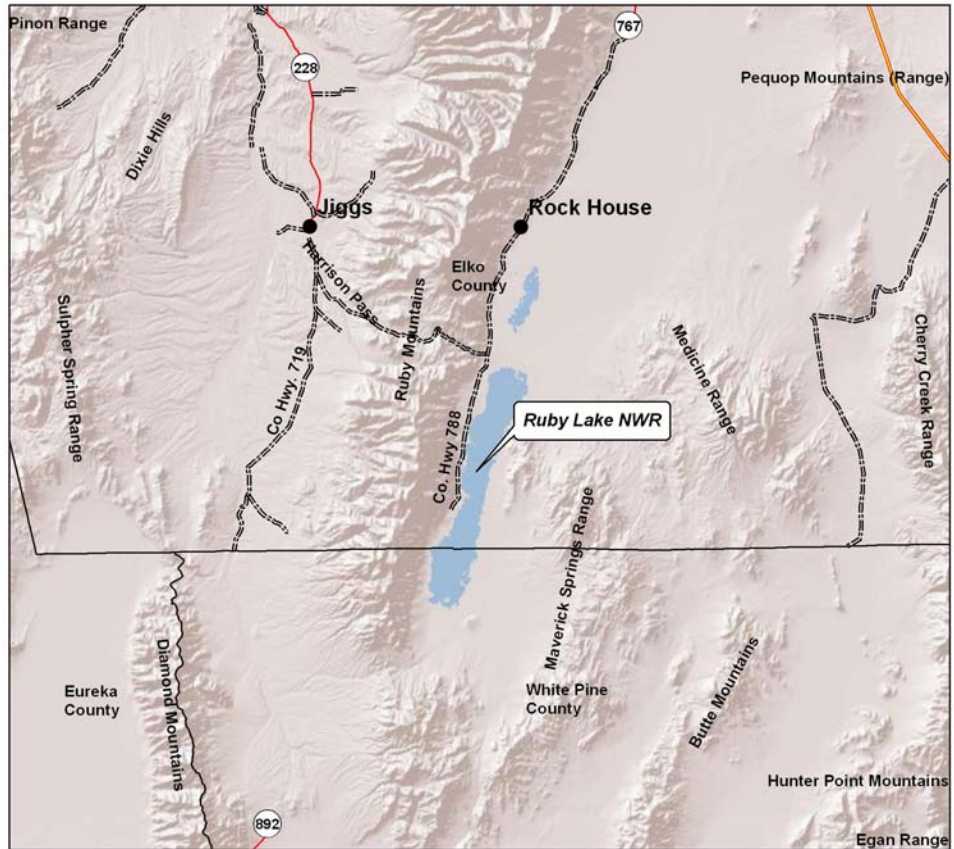
History - Ruby Lake is a natural, spring fed, high elevation marsh, located entirely on the Ruby Lake National Wildlife Refuge. The refuge is divided into the North Dike units and the South Lake.

Pertinent Information - Ruby Lake lies at an elevation of 6,000 feet in a closed basin. The Refuge contains over 9,000 acres of lakes, ponds and waterways intermixed with islands and bulrush stands to the south and manmade dike units to the north. The marsh varies in depth from shallow to 12 feet deep. Ruby Lake Refuge contains largemouth bass, brown trout, rainbow trout and brook trout. The native Relict dace is present in many of the springheads around the lake. Harvest rates from 2008 creel census found a catch rate of 4.3 fish per hour. The average harvest size was 11.2 inches for the bass and 17.5 inches for the rainbow trout. Typical bass fishing techniques include plugs, rubber worms, and spinner baits as well as bass flies for the fly fishermen. Most forms of bait: salmon eggs, worms, and Power Bait work on the trout as well as small lures and flies. Spring through early summer and the fall are the best times to fish for trout, while bass fishing is usually good spring, summer and fall. The North Dike area is open to fishing year around, but is restricted to shore fishing only. The South Lake is best accessed by boat after June 15. The Nevada Trophy Book lists several records for Ruby Refuge including a 9-pound largemouth bass captured in 1977, a 4-pound 14-ounce brook trout captured in 1981, a 25-pound brown trout captured in 1992, a 9-pound 2-ounce cutthroat trout captured in 1998, a 13-pound 13-ounce rainbow trout captured in 1991 and a State Record 13-pound 13-ounce tiger trout (brown trout x brook trout hybrid) captured in 1998. A 7 pound 10 ounce tiger trout was entered into the Trophy Fish Program in 2008. Camping - A Forest Service operated campground is situated adjacent to Ruby Lake. In addition, there are several primitive camping sites scattered along the west side along the foothills.

Stocking - Between March and April, approximately 2,650 rainbow trout, 1,500 tiger trout, and 2,450 brown trout are scheduled for introduction. In the fall, 14,650 rainbow trout and 4,000 tiger trout are scheduled to be stocked.

Regulations - The season is open year around in all areas, except as posted, from 1 hour before sunrise to 2 hours after sunset. Between January 1 and June 14, the limit is 3 trout and 5 largemouth bass with a minimum size on the bass of 10 inches. Between June 15 and December 31, the limit is 3 trout and 10 largemouth bass. Artificial lures only are allowed in the Collection Ditch. Chumming is prohibited. It is unlawful to clean or fillet fish within the Refuge boundaries.

Biologist Forecast for 2009- Largemouth bass numbers are going up and fishing is expected to be good for keeper size bass in the 10 to 12 inch size range. Trout fishing is expected to be good in the early spring before water temperatures warm up, and again in the fall as water temperatures cool. Following the good winter (above average snowpack) water levels are expected to be high and the "Marsh" should provide good fishing.



No warranty is made by the Nevada Department of Wildlife as to the accuracy, reliability, or completeness of these data for individual use or aggregate use with other data.

Boating Regulations - Between June 15 and July 31, only motorless boats, float tubes and boats with electric motors are allowed (waterfowl nesting). From August 1 through December 31, motorless boats, float tubes and boats propelled by motors of 10 h.p. or less are allowed.

Access - From Elko, travel approximately 65 miles over Harrison Pass (Ruby Mountains) on Highway 227/228 to Ruby Valley and the Ruby Lake National Wildlife Refuge.