

#### 4.

### COLORADO RIVER BELOW DAVIS DAM

History - The river forms the boundary between Arizona and Nevada. River levels are subject to highly variable daily and seasonal flow rates. Much of the 12 miles of river is contained by dikes and is subject to commercial and private development. There are a few backwater areas in Nevada.

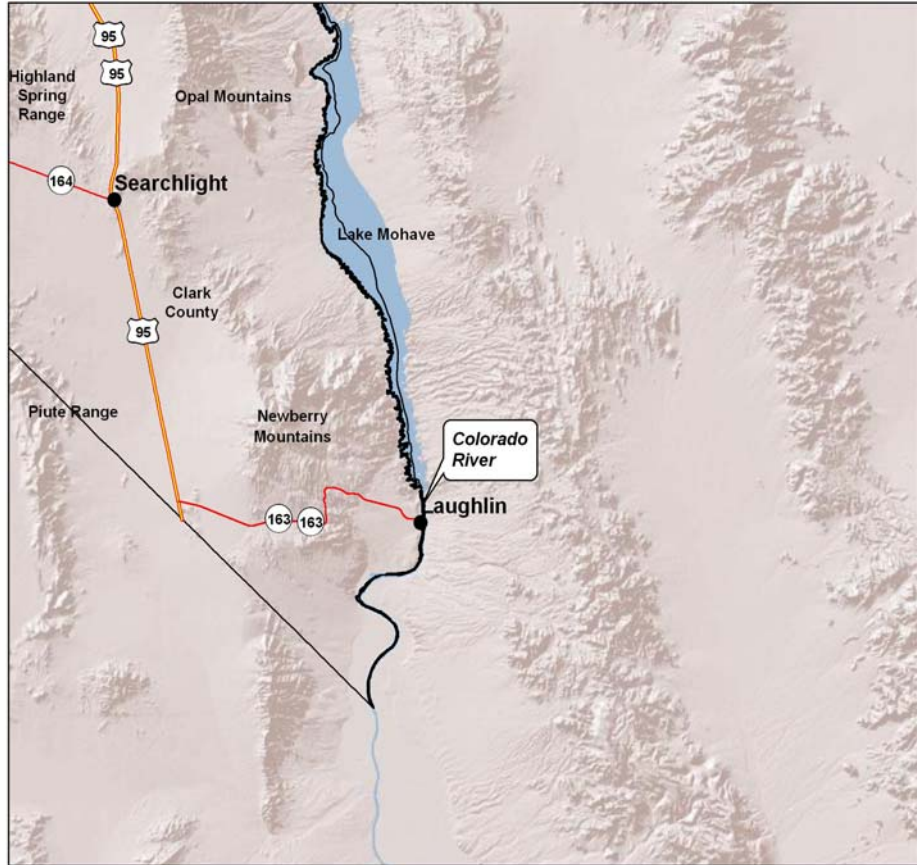
Pertinent Information - This section of the river flows for 12 miles before exiting Nevada. Flows can vary between 2,000 and 20,000+ cfs. Game species include striped bass, largemouth bass, channel catfish, rainbow trout and redear sunfish. Nongame species include razorback sucker and flannelmouth sucker. Largemouth bass generally average about 11.5 inches with a range of 2 to 20 inches, striped bass average about 14 inches with a range of 5 to 34 inches, and rainbow trout averaged about 9.0 inches with a range of 7 to 13 inches. Several striped bass were caught in 2008 ranging in the 28 to nearly 30 pound range. A record blue gill of 2 pounds 5 ounces also was caught in 2008. The best times to fish for rainbow trout are October through March; for stripers, April through October; and for largemouth bass, March through June. The most productive fishing methods for stripers are cut bait and lures that imitate threadfin shad and trout. Rainbow trout are best captured with prepared baits and lures. Boating access can be found on the Nevada side at Sportsmans Park in Laughlin, Big Bend State Park and the Avi Casino. There are several boating access points on the Arizona side. Shoreline access is available throughout most of the 12 miles of river in Nevada. Camping - Camping is available primarily on the Arizona side. There is some RV camping on the Nevada side. Laughlin offers inexpensive hotels. Things to Consider: Extreme summer temperatures may reach 115° F. This is a very popular area with boaters and jet skiers in the summer.

Stocking – The warmwater species present in this section of the river are self-sustaining. Rainbow trout are occasionally stocked by the Willow Beach Federal Hatchery.

Regulations - Season is open year around, any hour of the day or night, except in areas as posted. Limit is 10 trout, 6 largemouth bass, 10 striped bass and 25 catfish. Minimum size for largemouth is 13 inches. No limit on other game fish.

Biologist Forecast for 2009 - Fishing should be generally fair with localized periods of good fishing depending on flows, striped bass migration from downstream and the angler's ability to locate holding fish. Backwater areas like Laughlin and Boy Scout Lagoons have produced record-sized panfish (bluegill and redear sunfish) in the past two years and are worth investigating.

Boating Regulations – Vessels are prohibited in areas within the signs or buoys located below Davis Dam and the swimming area of Harrah's Casino in Laughlin. Adjacent to Harrah's Casino - All boat harbors and other areas designated by buoys are zones in which a vessel must be operated at a speed that leaves a flat wake, but in no case may a vessel be operated at a speed in excess of 5 nautical miles per hour. Watch for posted areas.



No warranty is made by the Nevada Department of Wildlife as to the accuracy, reliability, or completeness of these data for individual use or aggregate use with other data.

Access - To get to Davis Dam, travel east out of Las Vegas for 20 miles on Highway (515,93,95) towards the town of Boulder, turning south on Highway 95 before reaching the town. Travel approximately 60 miles south on Highway 95 before turning east on Highway 163 and traveling the 15 miles to Davis Dam and the start of the lower Colorado River.