

12.

LORENZI PARK POND

History - Lorenzi Park Pond is located in Lorenzi Park in northwest Las Vegas and operated by the City of Las Vegas. The location of the park pond was the site of historic Twin Lakes, one of the original major spring systems that fed Las Vegas Wash before the valley was settled. The site was developed in the 1930s, originally as a private ranch and recreation site and then later as a municipal park. Lorenzi Park Pond was originally two smaller ponds but was improved and deepened in the 1970s to make the single, approximately 3 acre pond that is there today. It has been used as an urban fishing site since the 1980s, and is also used to supply irrigation water for park landscaping.

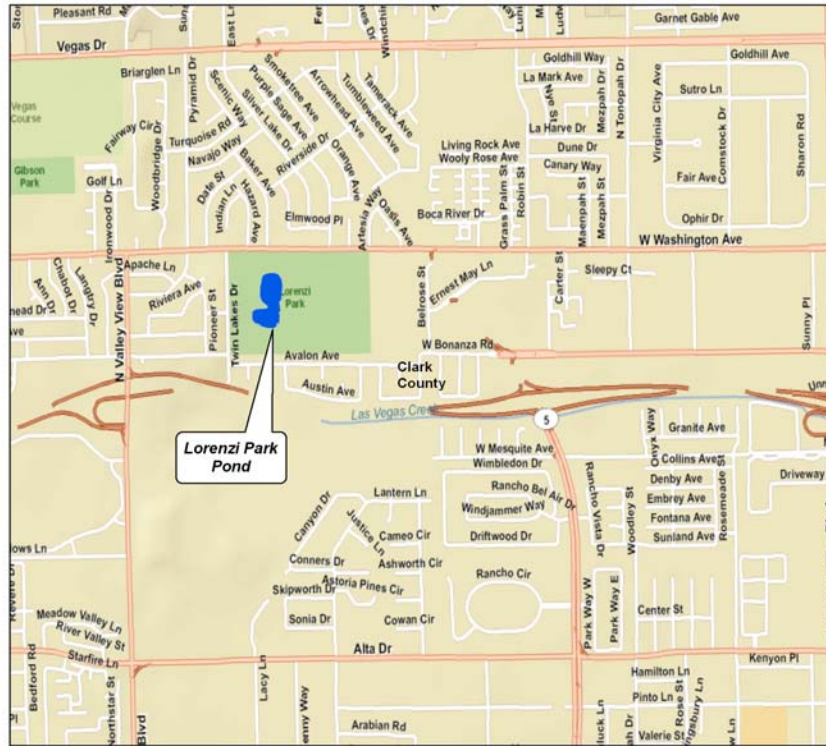
Pertinent Information - Lorenzi Park Pond is approximately 3 acres in size and has a maximum depth of approximately 10 feet. The entire shoreline of the reservoir is accessible for angling. Water quality is generally good, but the surface elevation can vary depending on park irrigation needs. The pond is subject, seasonally, to noticeable blooms of green algae due to warm water temperatures and nutrient input from the numerous waterfowl that use the pond. This is an aesthetic problem, but does not affect the edibility of the fish in the reservoir. The pond is accessible for fishing during open park hours (times are posted at the park entrances). The primary game fish species in Lorenzi Park Pond are rainbow trout and channel catfish. Catchable-sized fish of both species are stocked seasonally. A small number of largemouth bass and panfish inhabit the pond and are caught occasionally. Because of the small size of the pond, species other than trout and catfish are not routinely stocked. Small spinners, still baits such as salmon eggs, and fly fishing can all be effective for rainbow trout. Camping - No overnight camping is allowed at Lorenzi Park. Improved day use areas with shade shelters, picnic tables and barbecues are available on a first-come, first-served basis. There is no fee for park access.

Stocking - Lorenzi Park Pond is stocked weekly with rainbow trout from November until March, and with channel catfish at least monthly from April through October. Water temperatures and other conditions can change this stocking schedule without notice. Stocking schedules, updated weekly, are available from the Lake Mead Hatchery hotline at (702) 486-6738.

Regulations - Season is open year round, during park open hours only. The daily and possession limit are 3 fish of any species in combination. The use of live bait is prohibited in Lorenzi Park Pond.

Biologist Forecast for 2009 - Angling for stocked trout and catfish will be good throughout the year, generally for at least a week after each stocking. Angling slows in the late spring (April) and early fall (September).

Boating Regulations - Boats and other flotation devices, including float tubes, are prohibited on Lorenzi Park Pond.



No warranty is made by the Nevada Department of Wildlife as to the accuracy, reliability, or completeness of these data for individual use or aggregate use with other data.

Access - Lorenzi Park is located on Washington Avenue in Las Vegas, west of Rancho Drive and 1 mile east of Decatur Boulevard, north of the US 95 freeway. Direct access and parking for the fishing pond is through park entrances on Twin Lakes Drive, which is the west boundary of the park and connects to Washington Avenue.