

15.
HUMBOLDT RIVER
(HUMBOLDT COUNTY)

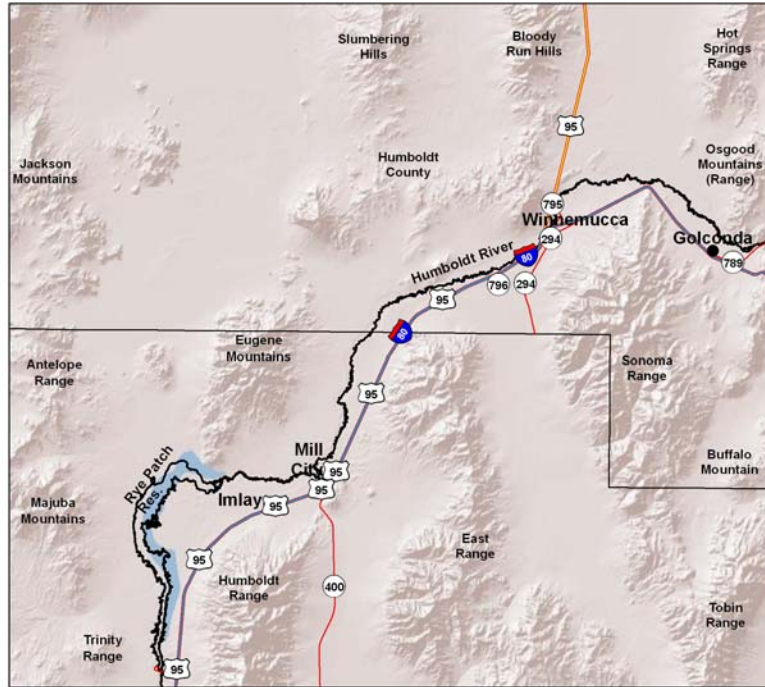
History - The Humboldt River was historically a cutthroat trout water that produced excellent fishing in the 1840s. However, that portion of the Humboldt found in Humboldt County was never considered “good” trout fishing. Many of the early journals describe the Humboldt River as muddy with a distinct lack of fish. Water quality, due to high temperatures, in the lower river has kept many of the cold water fish species (trout) confined to the headwaters of the river near Elko. Poor watershed practices, deteriorating water quality, and primitive irrigation practices have eliminated trout from the mid and lower Humboldt River. Efforts to stock warmwater species such as catfish, bluegill, white bass and crappie began in the late 1940s. Healthy populations of these species now provide angling opportunities during the summer and fall of most years.

Pertinent Information - Flows in the river fluctuate between 13 and 694 cfs. The primary species found in this section of the river include white crappie, wipers (white bass x striper hybrid), channel catfish, largemouth bass, smallmouth bass, walleye, brown bullhead, bluegill, green sunfish and yellow perch. Creel census (1999) found a catch rate of 0.38 fish per hour. Populations vary from year to year and season to season. Angler Questionnaire data from 2007 found 306 anglers fishing 2,253 days and capturing 4,661 fish for 2.07 fish per angler day. The best times to fish are from early May through early July. Traditional bait fishing techniques using worms and live bait are very productive. Small crappie jigs are also very effective when fished around structure. NDOW’s Trophy Book lists a 17-pound, 4-ounce white catfish (state record), a 2-pound 11-ounce largemouth bass, a 4-pound 4-ounce smallmouth bass, a 9-pound 1-ounce carp, a 22-pound channel catfish, a 12-ounce white crappie, a 2-pound 14-ounce rainbow trout, a 13-pound 14-ounce walleye and a 17-pound 15-ounce wiper being captured in the Humboldt River. Camping - All camping on the lower Humboldt River is primitive. Much of the lower river flows through private property. Anglers should contact the landowner for permission to fish or camp on his property.

Stocking - The river is not stocked on an annual basis. The warmwater species present in the system are self-sustaining.

Regulations - Limit is 10 trout and 15 warmwater game fish of which not more than 5 may be largemouth bass, 5 may be walleye and 5 may be white bass or wipers which are over 14 inches in length.

Biologist Forecast for 2009 - River flows are regulated by decree and are based on water right holder requests. The 2009 flows should be normal in the spring. Fall flows are expected to be low.



No warranty is made by the Nevada Department of Wildlife as to the accuracy, reliability, or completeness of these data for individual use or aggregate use with other data.

Access - U.S. Interstate 80 follows the Humboldt River. Access is limited to public roads servicing downstream irrigation systems. Access to much of the lower river will require landowner permission.