

MOUNTAIN VIEW PARK

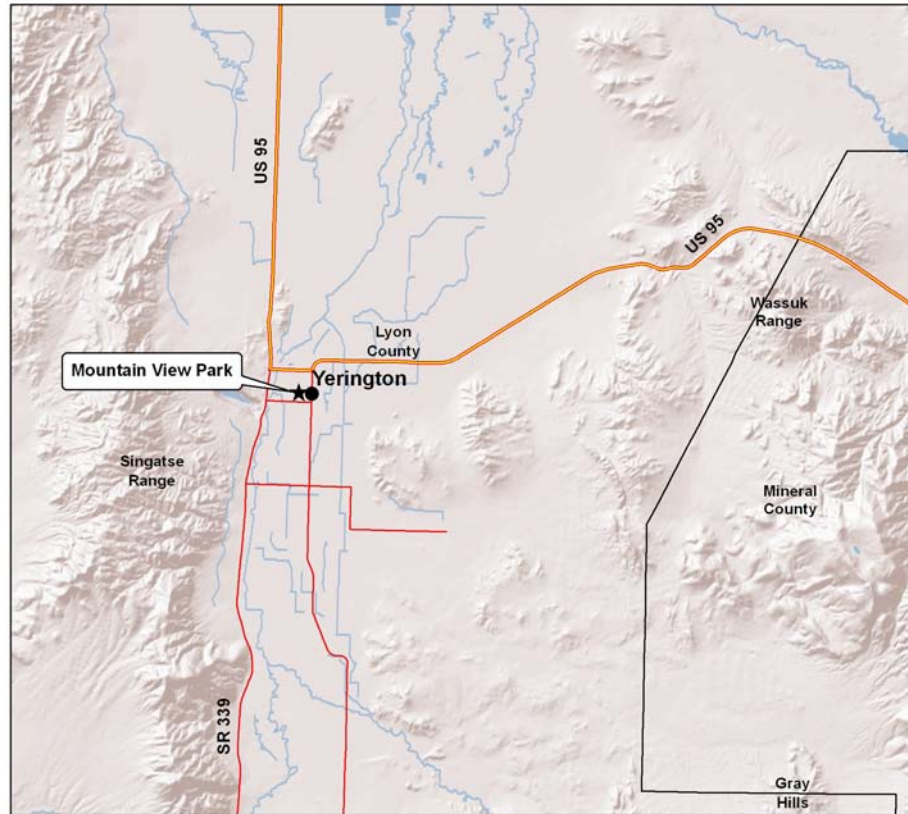
History - Mountain View Park has been stocked with trout from the Mason Valley Hatchery for the past 11 years. It is a small urban pond in central Yerington.

Pertinent Information - Mountain View Park is a small urban pond that is 4 feet deep and covers 1/3 of an acre. It is located near a senior citizen assisted living complex and is within walking distance of local schools. It is stocked with rainbow trout that average 9 inches in length. Angler Questionnaire data from 2007 found 82 anglers fishing 423 days and capturing 1,308 fish for 3.09 fish per angler day. Best baits include worms, power bait, corn and salmon eggs.

Stocking - The pond receives an annual allocation of 1,400 9-inch rainbow trout stocked between March and June.

Regulations - The limit is 5 trout daily and in possession. No boating is allowed.

Biologist Forecast for 2009 - Fishing should be good from late March through early June for hatchery rainbow trout. Warm water temperatures during the summer months will probably decrease angler success.



No warranty is made by the Nevada Department of Wildlife as to the accuracy, reliability, or completeness of these data for individual use or aggregate use with other data.

Access - Mountain View Park is accessible by driving down Bridge Street in Yerington, turning left on Mountain View Avenue and traveling 3 blocks north. The pond is 3 blocks west of the Lyon County Hospital.