

### 30.

## SPARKS MARINA

History – The site on which Sparks Marina Park is located was once a gravel pit owned and operated by Helms Construction Company (1968 - 1995). In 1987, petroleum products and solvents were discovered seeping into the now 100-foot deep pit along the southwest wall. The contamination was traced to a massive spill at the tank farm one mile west. The site was declared a Toxic Superfund Site and a comprehensive cleanup effort was initiated. In 1996, the groundwater was reported to be free of petrochemicals and the property was turned over to the City of Sparks. Millions of dollars of spill mitigation money were made available to the City who planned to construct a park and make the pit into a recreational pond. They had planned on filling the pit to a depth of approximately 30 feet, however, in January of 1997, the Truckee River flooded, overflowed its banks and filled Helm's Pit, creating what is now Sparks Marina Pond.

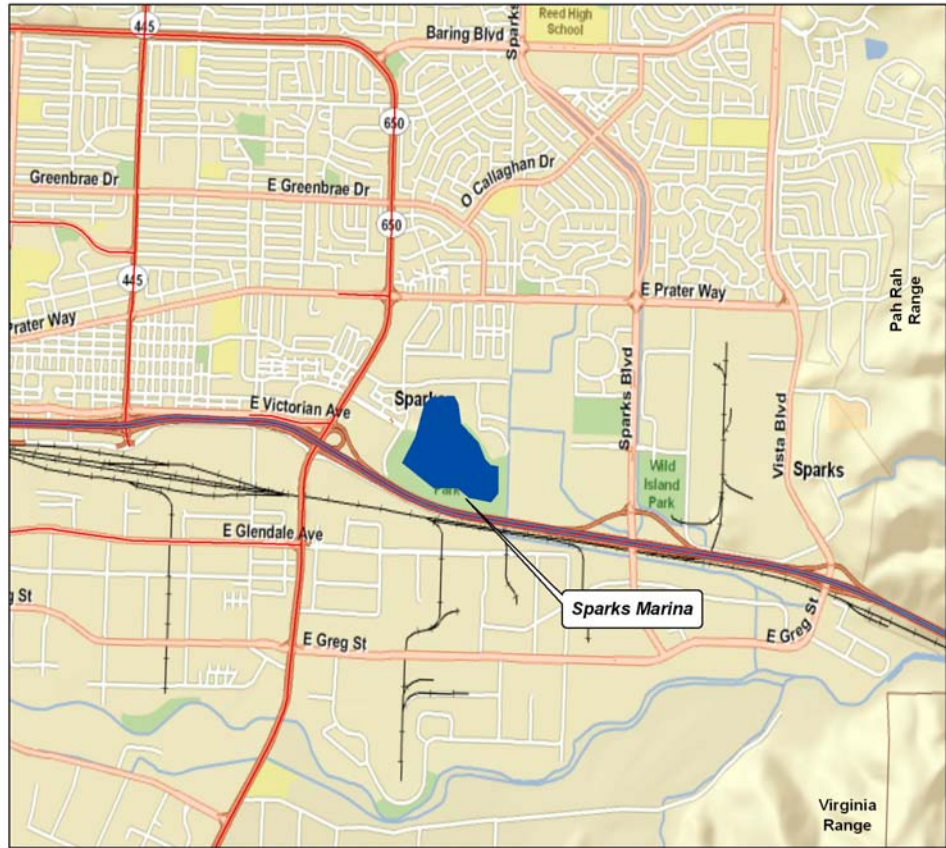
Pertinent Information – Sparks Marina is 100 feet deep and covers approximately 77 acres. In order to keep the lake at the desirable level, the city has to pump approximately 2.3 million gallons of water out of the lake and into the Truckee River each day. Rainbow, cutthroat and brown trout have been introduced into the lake, but potentially anything that was in the Truckee River at the time of the 1996 flood could be in the lake. Other species present may include largemouth bass, green sunfish, channel catfish, and bullhead catfish. Carp are also present in the lake ... keep an eye on those rods, there are some big fish in there! Water records include a 12-pound 8-ounce carp caught in 2005, an 8-pound 13-ounce rainbow trout caught in 2001 and a 12 pound 15-ounce channel catfish captured in 2007. The angler questionnaire in 2007 showed 1,309 anglers had an average catch rate of 2.31 fish per angler day. Boat Launch - a small concrete boat ramp is located at the south beach on the west side of the lake. Parking - parking lots are located on the west side by the beaches and on the southwest corner of the lake.

Stocking – The Nevada Department of Wildlife plans on stocking lake with 10,000 catchable rainbow trout in the spring and 8,500 in the fall. Spotted bass were introduced into the pond in the past and 3,000 channel catfish will be stocked in early summer.

Regulations – Season is open year around, 1 hour before sunrise to 2 hours after sunset. Limit is 5 game fish, of which not more than 2 may be black bass. Fishing is prohibited in the swimming and diving areas.

Biologist Forecast for 2009 – There are a lot of big fish in this lake, but it's big and deep and they're not easy to catch. Try different depths and different lures and/or bait to find what works. Spotted bass are doing well and usually found 10-40 feet deep. They are running about 12 inches long and some up to 2-3 pounds.

Boating Regulations - Only vessels without motors and vessels with electric motors are permitted on Sparks Marina. Vessels are prohibited in areas designated by signs or buoys at the swimming and diving areas.



No warranty is made by the Nevada Department of Wildlife as to the accuracy, reliability, or completeness of these data for individual use or aggregate use with other data.

Access – The park is situated alongside Interstate 80 in Sparks. Exit on East McCarran Blvd. and turn north. Turn east on Nichols.