

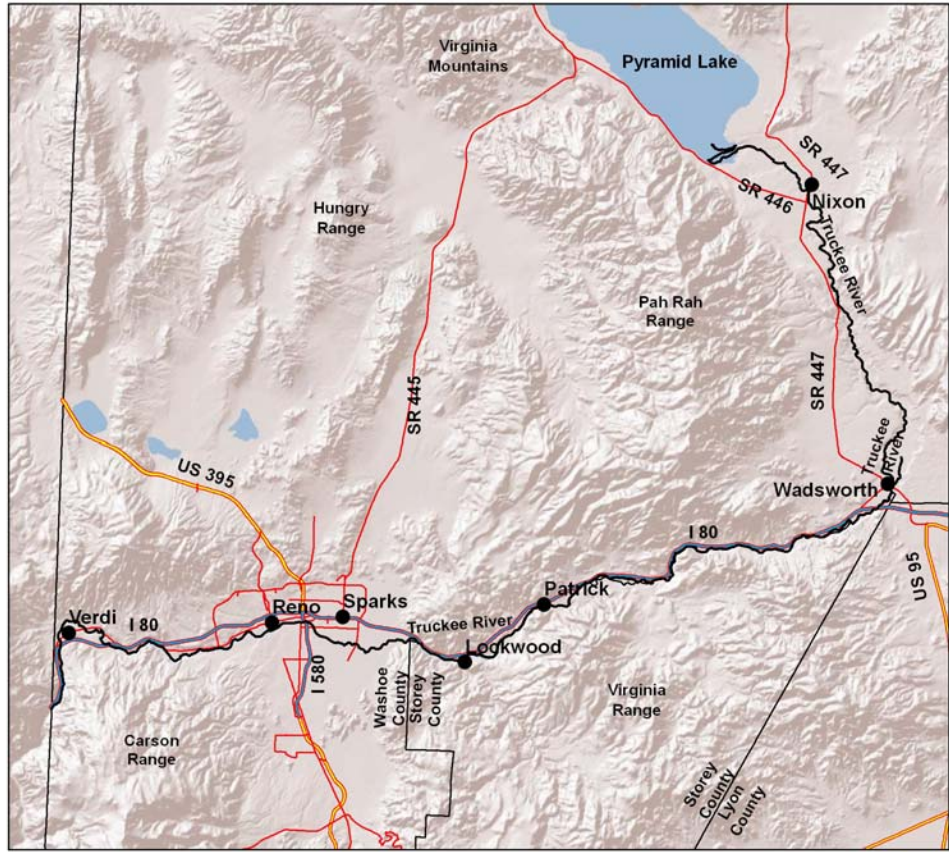
TRUCKEE RIVER

History – The Truckee River was originally home to the Lahontan cutthroat trout and the cui-ui sucker. During normal years, adult fish would ascend the Truckee and its tributaries (in the case of trout) to spawn. Each year, thousands of young fish hatched, grew and returned as natural recruitment to Pyramid and Winnemucca Lakes. It is probable that some young and adult cutthroat could be found in the river throughout the year. With the influx of European settlers came water diversions, habitat degradation and over-fishing, which led to the extinction of the Pyramid Lake cutthroat trout by the 1930s. With the deterioration of the cutthroat trout fishery, many new species were introduced into the river with varying results. Rainbow and brown trout have been the most successful, however their populations must be aided annually through supplemental stocking of hatchery-reared trout.

Pertinent Information – The Truckee River originates at the outlet of Lake Tahoe and flows approximately 110 miles to Pyramid Lake. Of those miles, approximately 40 miles of the river, between the California State line and the beginning of the Pyramid Lake Indian Reservation, is managed by NDOW. This river is one of the most heavily fished waters in the state, supporting over 100,000 angler days per year. Anglers can fish for rainbow, brown and cutthroat trout and mountain whitefish. Creel census for 2008 found catch rates of 1.0 fish per hour. Water records for the Truckee include a 15 pound 10 ounce brown trout (caught in 2008), an 8 pound cutthroat trout, a 9 pound 12 ounce rainbow trout, the state record 34 pound 10 ounce carp, and a 3 pound 2 ounce mountain whitefish. High flows from runoff between March and June keep most anglers away during these months. However, once flows return to normal, the river again becomes fishable. Some of the best fishing occurs in the late spring and early summer and again in the fall. Fishing is best when river flows are between 300 and 400 cfs.

Stocking – The Truckee is scheduled to receive about 8,750, 8-inch triploid (sterile) rainbow trout in spring and 26,250 in the summer and fall. In addition, 35,000, 9-inch Lahontan cutthroat trout are scheduled for spring and fall planting. Fish are stocked between March and September at locations along the entire extent of the Nevada section of the river (excluding the trophy section) and again in the fall.

Regulations – General Regulations apply: Season is open year around, any hour of the day or night. Limit is 5 trout, 10 mountain whitefish and 15 warmwater game fish of which not more than 5 may be black bass. **EXCEPT:** The area within 1,000 feet downstream of Derby Dam is closed to fishing. **Trophy Section:** The Truckee River and diversion ditches above the I-80 bridge, upstream from Crystal Peak Park in Verdi, to California state line where the limit is 2 trout and 10 mountain whitefish. Minimum size for trout is 14 inches. Only artificial lures with single barbless hooks may be used.



No warranty is made by the Nevada Department of Wildlife as to the accuracy, reliability, or completeness of these data for individual use or aggregate use with other data.

Biologist Forecast for 2009 – The Sierra-Nevada snow pack was about 85% of average. Therefore, the river will probably be normal (500 cfs) by late June, but will be low going into fall. There has been good carryover of trout during the past 5-years so that rainbow and brown trout should be getting large. Fishing should be good in the early spring and then again from September through November.

Access – The Truckee River has been designated a “navigable water” which means that the state of Nevada owns the bed of the Truckee up to the “present ordinary permanent high water mark”. Basically, this means that the bed of the river is public land, however, individuals may *not* cross private property to get to the river.