

Nevada Department of Wildlife

Upland Game Release Plan

For

State Fiscal Years 2012 and 2013



July 2011

STATE OF NEVADA

Brian Sandoval, Governor

DEPARTMENT OF WILDLIFE

Kenneth C. Mayer, Director

GAME DIVISION

Larry Gilbertson, Administrator

BOARD OF WILDLIFE COMISSIONERS

Jeremy Drew.....Minden
Michael McBeath.....Las Vegas
David McNinch.....Reno
Jack Robb.....Reno
Grant Wallace.....Dyer
Charles HowellLas Vegas
Hal ShrumLas Vegas
Henry Vogler.....Ely
Scott Raine.....Eureka

This publication will be made available in an alternative format upon request.

This program or publication receives funding through the Federal Aid in Sport Fish and/or Wildlife Restoration. Federal Laws prohibit discrimination on the basis of race, color, national origin, age, disability, and sex [in educational programs]. If you believe you've been discriminated against in any NDOW program, activity, or facility, please write to the following:

US Fish and Wildlife Service, Division of Federal Assistance
4401 North Fairfax Drive, Mailstop: MBSP-4020
Arlington, VA 22203

You may also write to the following:
Director of the Nevada Department of Wildlife
1100 Valley Road, Reno, NV 89512-2817

Table of Contents

Section	Page
Summary of Proposed Projects for Fiscal Years 2012 & 2013.....	4
Summary of Accomplishments for Fiscal Years 2010 & 2011.....	5
Summary of Accomplishments Table for FY 2010 & 2011	9
 Species Summaries	
California Quail	10
Statewide.....	11
Mountain Quail	12
Clover Mountains – Cottonwood Canyon.....	13
Delamar Mountains – Boulder Spring	14
Delamar Mountains – Jump Up Canyon.....	15
Rainbow Canyon.....	16
Buck Mountain – White Pine County.....	17
Virginia Range – Bullion Ravine.....	19
Rio Grande Turkey	20
Deer Lodge Canyon	21
Doc’s Pass.....	22
Fairview Spring.....	23
Oak Well Hollow.....	24
Iowa Canyon and Boone Cr. – Toiyabe Range.....	25
XJ Ranch – Unit 103.....	27
Merriam’s Turkey	28
Chukar Partridge	29
Southern Region.....	30
Ruffed Grouse	31
North Tuscarora Range - Toe Jam Creek.....	32
Snowstorm Mountains – Kelly Creek	33
Pine Forest Range – Boyd Basin/Onion Reservoir.....	34
East Independence Range - Gance Creek or Jim Creek...	35
Toiyabe Mountains - Big Creek & Birch Creek.....	36
Ruby Mountains – Gennette Creek.....	37
Columbian Sharp-tailed Grouse	38
Bull Run Range – Columbia Basin	49

Nevada Department of Wildlife

Upland Game Release Plan

For

Fiscal Years 2012 and 2013

SUMMARY OF PROPOSED PROJECTS		
Species	# Proposed Introductions	# Proposed Augmentations
California quail	TBD	TBD
Mountain Quail	5	1
Rio Grande Turkey	5	1
Chukar Partridge	-	1
Ruffed Grouse	3	3
Sharp-tailed Grouse	1	-
Total Upland Game	14	5

NEVADA DEPARTMENT OF WILDLIFE

Upland Game Release Plan

For

Fiscal Years 2012 and 2013

The Nevada Department of Wildlife is pleased to present the agency's Upland Game Release Plan for Fiscal Years 2012 and 2013 (July 1, 2011 through June 30, 2013). The following narrative summarizes the agency's accomplishments over the past planning period which was previously described within the FY10-11 Biennial Release Plan (July 1, 2009 through June 30, 2011).

SUMMARY OF ACCOMPLISHMENTS

The Nevada Department of Wildlife (NDOW) continues to capture and release wild upland game bird species for population augmentation and establishment in accordance with the Nevada Upland Game Species Management Plan and pertinent Biennial Upland Game Release Plans. In State Fiscal Years 2010 and 2011, translocations of mountain quail (n=190), ruffed grouse (n=27), Rio Grande turkey (n=89) and California quail (n=302) were conducted in several areas. In addition to the translocation operations, monitoring of radio-marked segments of the release compliments provided valuable information regarding distribution and survival.

WESTERN REGION

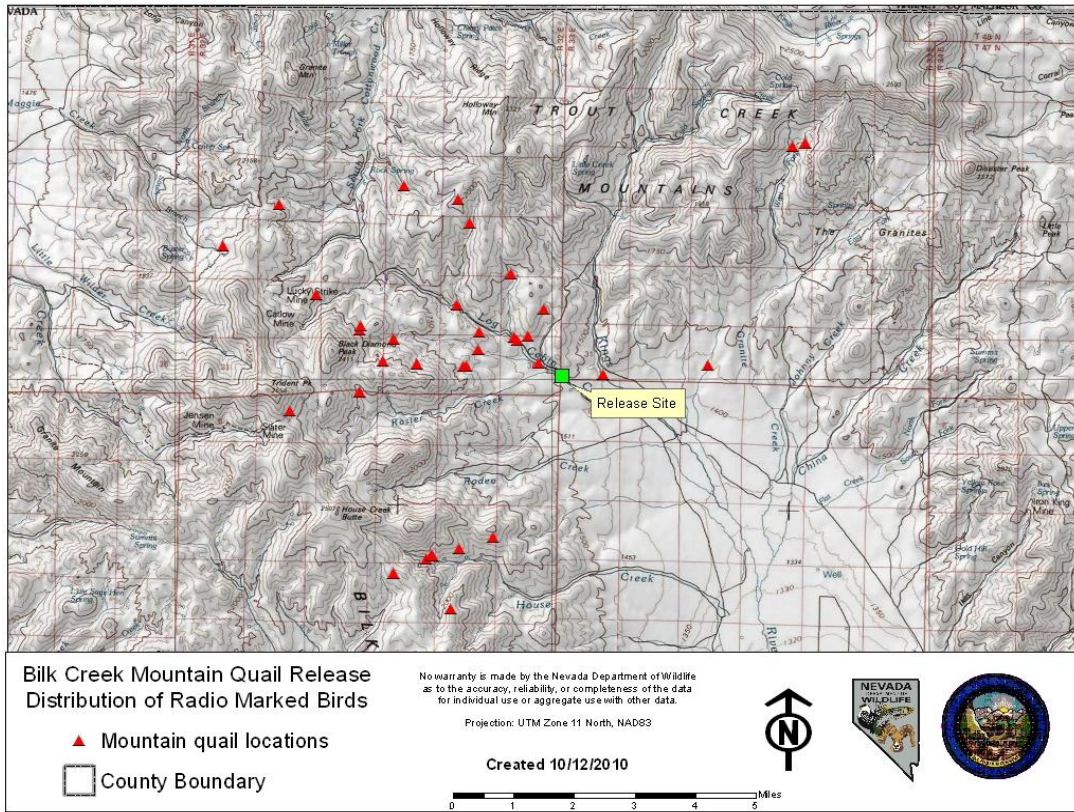
Mountain Quail

During Fiscal Years (FY) 2010 and 2011, mountain quail, Rio Grande turkeys and California quail were released in various locations in the Western Region. In addition to the actual capture and release of birds, regular monitoring of mountain quail and Rio Grande turkeys took place over the Biennium.

A total of 200 mountain quail were received during FY10 and 11 from the Oregon Department of Fish and Wildlife through a vendor specializing in wild mountain quail capture. The total cost of capture of these quail was \$12,000 and was funded through the Nevada Upland Game Stamp program.

Birds released in FY10 were overwintered at the Mason Valley Wildlife Management Area and released during the spring of 2010. A total of 92 birds were released (8 mortalities within holding pen) into the Bilk Creek Range in Humboldt County. Of these, 32 birds were outfitted with VHF radio transmitters to document movement, monitor nesting activities and locations, and determine

survival. Upland Game Stamp funds were utilized to purchase the transmitters at a cost of \$5,920. A seasonal technician was dedicated to this project to follow-up on radio-marked birds and document locations, mortality and cause of death. Figure 1 shows the distribution of mountain quail post release.



In FY2011, 98 mountain quail (2 mortalities during transportation) were again released into the Bilk Creek Range. This release; however, was conducted in the late fall of 2010 and at a separate release location. The location was chosen based on the propensity of radio-marked birds from the spring release to utilize the area. The Nevada Board of Wildlife Commissioners did not approve funding for monitoring birds released in late fall, which is unfortunate because it would have been interesting to compare vital rates between the two releases and also to monitor the success, or failure, of the release.

In total, 190 mountain quail were released into the Bilk Creek Range over the two year period. After the first release, nesting activity and broods were document, but little is known regarding the long-term success of the project due to funding limitation. At this point, success will be documented during irregular site visits to listening stations as well has hunter harvest reports.

California quail

In addition to mountain quail releases, several releases of California quail were also made during the biennium. NDOW headquarters and Western Region offices in Reno continue to receive complaints during the winter months of large

coveys (>300 birds) of California quail that congregate in residential areas. Complaints often involve defoliation of lawns and ornamental shrubs. NDOW views these birds as source stock and places some effort into capture and translocation into suitable habitats through the volunteer program and with existing staff. During capture efforts conducted in the Reno and Carson City areas in FY10 and 11, a total of 302 California quail were captured and released at the locations provided in Churchill, Douglas and Washoe Counties.

Rio Grande Turkey

A total of 27 turkeys were released in Carson Valley in March of 2011. This was the second release of turkeys in the area with the initial release taking place in 2009. The release complement consisted of 20 females and 7 males (one mature tom). The birds were captured from Contra Costa County in California by California Department of Fish and Game personnel. Funding for the capture and transportation was provided by the National Wild Turkey Federation.

EASTERN REGION

Ruffed Grouse

Central and eastern Nevada has some tremendous potential to support robust and healthy ruffed grouse populations. Healthy riparian communities that include a sizeable aspen component of multiple age classes as well as layered understories of shrubs and grasses provides ruffed grouse with suitable habitats to carry out their life history needs. During FY10, the culmination of a project that took years in the making was finally implemented. Ruffed grouse were introduced to the Toiyabe Range in Lander County for the first time.

During September of 2009, an intensive ruffed grouse trapping effort took place in the Bull Run Mountains located in northern Elko County. The operation yielded a total of 27 ruffed grouse and 8 separate releases were conducted between September 5th and September 29th. All but one juvenile survived the 260 mile transport from the capture area to the Toiyabe Range. This effort was very labor intensive and required several dedicated personnel to erect traps, check traps and monitor birds while they were being held in captivity.

Four ruffed grouse from the release were equipped with small VHF radio transmitters. These were attached to determine seasonal movements, habitat preference areas, brood rearing areas, and drumming locations. A total of four telemetry flights were conducted from October 2009 through June 2010 and an additional two days were spent conducting telemetry follow-up from the ground. Signals could be heard emanating from above the canyons, but when attempts were made to physically locate birds, the dense vegetation within the aspen stands prevented pinpoint locations. All four radio-marked birds stayed within a two-mile radius of the release site. This was valuable information and indicated that habitat conditions were suitable.

As of June 2010, two mortalities were documented out of the four radio-marked birds. Both mortalities likely took place in early winter as the detection was made during a survey flight in January of 2010. Both birds were located in the general area of the release site.

SOUTHERN REGION

Rio Grande Turkey

Two releases of Rio Grande turkey took place in the Southern Region. These releases occurred in FY10 in Lincoln County. A total of 62 birds were liberated with releases taking place within the Clover Mountains and the Delamar Mountain Range. Each release consisted of 31 birds each. All birds were tested for Salmonella and Mycoplasma species and appeared to be in good condition upon release. Birds were provided by the Utah Division of Wildlife Resources. Quality habitat for wild turkeys is available in limited, well distributed segments within this particular region. Turkeys are expected to distribute themselves across a fairly broad landscape.

**2010 & 2011 NEVADA UPLAND GAME
RELEASE PLAN**

SUMMARY OF ACCOMPLISHMENTS

Species	FY	Location	Co.	Type	# Released	
California Quail	10	West Lee Creek	CH	A	55	
		Hot Springs Mountain	DO	A	53	
		Parsnip Wash – Buffalo Hills	WA	A	54	
	<i>FY Subtotal:</i>					152
	11	Jumbo Grade – Virginia Range	WA	A	80	
		Washoe Canyon – Carson Range	DO	A	70	
<i>FY Subtotal:</i>					150	
TOTAL:					302	
Mountain Quail	10	Log Cabin Creek – Bilk Creek Range	HU	A	92	
	11	Rodeo Creek – Bilk Creek Range	HU	A	98	
	TOTAL:					190
Rio Grande Turkey	10	Bunker Pass – Clover Mountains	LI	A	31	
		Chokecherry Spring – Delamar Range	LI	A	31	
	<i>FY Subtotal:</i>					62
	11	Carson Valley	DO	A	27	
	<i>FY Subtotal:</i>					27
TOTAL:					89	
Ruffed Grouse	10	Birch Creek – Toiyabe Range	LA	I	26	
	11	<i>No Releases Conducted in FY11</i>				
	TOTAL:					26

Proposed Releases

California quail

Location	Type
Western Region	A
Eastern Region	A & I
Southern Region	A

Release sites are not specified – releases depend upon availability of depredated quail trapped from urban areas along Carson Front.



SMALL GAME RELEASE SITE PLANNING AND APPROVAL SUMMARY

SPECIES OR SUBSPECIES: California Quail (*Callipepla californica*)

INTRODUCTION: _____, or **AUGMENTATION:** X

FISCAL YEAR OF PLANNED RELEASE: 2012 and 2013

RELEASE SITE:

NAME: All Regions

COUNTY: Churchill, Elko, Eureka, Humboldt, Lander, Lyon, Washoe

LEGAL DESCRIPTION: not specific

TRANSPLANT STOCK: Depredating quail will be trapped from the Carson Front including Carson City, Douglas, Lyon, Washoe and Storey Counties.

COOPERATING LAND MANAGEMENT AGENCIES:

Bureau of Land Management, US Forest Service, US Fish & Wildlife Service

AGENCY APPROVAL DOCUMENT: BLM Categorical Exclusion. USFS Coordination. Coordination with private landowners.

OTHER DOCUMENTS AND THEIR STATUS: Nevada Upland Game Species Management Plan. Western Quail Management Plan (Zornes and Bishop, 2009)

NOTIFICATION OF USER GROUPS: *(Include methods & dates)*

Cooperators will be notified prior to each release and will be provided with a post-release narrative.

HABITAT EVALUATION: Releases will augment existing populations occupying suitable habitat (augmentation) or will take place in unoccupied suitable habitat (introduction).

PREDATOR EVALUATION: No predator control is recommended.

COMMENTS: California quail releases are occasionally used to address short-term declines attributed to prevailing unfavorable habitat conditions.

NDOW REGION: Statewide **DATE PREPARED:** Revised July 12, 2011

Proposed Releases

Mountain Quail

Location	Co.	Type
Introductions – priority for first available donor stock		
Cottonwood Canyon – Clover Mountains**	LN	I
Boulder Spring - Delamar Mountains**	LN	I
Jump Up Canyon – Delamar Mountains**	LN	I
Rainbow Canyon – Clover Mountains**	LN	I
Buck Mountain – South Ruby Mountains	WP	I
Augmentations – priority after introductions		
Virginia Range - Bullion Ravine**	ST	A

** Carryover [previously identified in FY10 & 11 Biennial Release Plan]



**SMALL GAME RELEASE SITE PLANNING
AND APPROVAL SUMMARY**

SPECIES OR SUBSPECIES: Mountain Quail (*Oreortyx pictus*)

INTRODUCTION: X , or **AUGMENTATION:** _____

FISCAL YEAR OF PLANNED RELEASE: 2012 & 2013

RELEASE SITE:

NAME: Clover Mountains, Cottonwood Canyon

COUNTY: Lincoln

LEGAL DESCRIPTION: T7S R70E Sec. 2

TRANSPLANT STOCK: China Lake NAWS

COOPERATING LAND MANAGEMENT AGENCIES: Bureau of Land Management, Caliente Field Office

AGENCY APPROVAL DOCUMENT: BLM Categorical Exclusion.

OTHER DOCUMENTS AND THEIR STATUS: Nevada Upland Game Species Management Plan. Western Quail Management Plan (Zornes and Bishop, 2009)

NOTIFICATION OF USER GROUPS: *(Include methods & dates)*
 Local sportsmen will be notified and asked to participate in the release; BLM District Biologist will be notified prior to the release and copied with the release report.

HABITAT EVALUATION: Adequate habitat exists for mountain quail in this area. Mountain quail are native to the State of Nevada and these efforts are an attempt to get mountain quail established in areas of suitable habitat. The habitat in Cottonwood Canyon is similar to that of Wildlands Conservancy properties and China Lake Naval Air Weapons Station in southern California (potential source stock resources).

PREDATOR EVALUATION: No predator control efforts are recommended.

COMMENTS: Mountain quail were petitioned for listing in March of 2000. In 2003, the USFWS found that the petition did not present substantial scientific or commercial information that warranted listing of the species. Our re-establishment and augmentation efforts are an attempt to establish these birds into suitable habitats that are recovering from livestock overutilization, wildfires or where water developments have been constructed in otherwise adequate habitat.

NDOW REGION: Southern **DATE PREPARED:** Rev. 7-12-2011



SMALL GAME RELEASE SITE PLANNING AND APPROVAL SUMMARY

SPECIES OR SUBSPECIES: Mountain Quail (*Oreortyx pictus*)

INTRODUCTION: X , or **AUGMENTATION:** _____

FISCAL YEAR OF PLANNED RELEASE: 2012 & 2013

RELEASE SITE:

NAME: Delamar Mountains - Boulder Spring

COUNTY: Lincoln

LEGAL DESCRIPTION: T7S R65E Sec. 24

TRANSPLANT STOCK: Wildlands Conservancy properties (CA.), or China Lake NAWS.

COOPERATING LAND MANAGEMENT AGENCIES: Ely BLM District

AGENCY APPROVAL DOCUMENT: BLM Categorical Exclusion.

OTHER DOCUMENTS AND THEIR STATUS: Nevada Upland Game Species Management Plan. Western Quail Management Plan (Zornes and Bishop, 2009)

NOTIFICATION OF USER GROUPS: *(Include methods & dates)*

Local sportsmen will be notified and asked to participate in the release; BLM District Biologist will be notified prior to the release and copied with the release report.

HABITAT EVALUATION: Adequate habitat exists for mountain quail within the vicinity of Boulder Spring. Mountain quail are native to the State of Nevada and these efforts are an attempt to establish mountain quail in areas of suitable habitat. The habitat in Boulder Canyon is similar to select Wildlands Conservancy properties and China Lake Naval Air Weapons Station in southern California (potential source stock resource).

PREDATOR EVALUATION: No predator control efforts are recommended.

COMMENTS: Mountain quail were petitioned for listing in March of 2000. In 2003, the USFWS found that the petition did not present substantial scientific or commercial information that warranted listing of the species. Our re-establishment and augmentation efforts are an attempt to establish these birds into suitable habitats that are recovering from livestock overutilization, wildfires or where water developments have been constructed in otherwise adequate habitat.

NDOW REGION: Southern

DATE PREPARED: Rev. 7-12-2011



**SMALL GAME RELEASE SITE PLANNING
AND APPROVAL SUMMARY**

SPECIES OR SUBSPECIES: Mountain Quail (*Oreortyx pictus*)

INTRODUCTION: X, or **AUGMENTATION:** _____

FISCAL YEAR OF PLANNED RELEASE: 2012 & 2013

RELEASE SITE:

NAME: Delamar Mountains - Jump Up Canyon

COUNTY: Lincoln

LEGAL DESCRIPTION: T8S R64E Sec. 36, 24

TRANSPLANT STOCK: Wildlands Conservancy properties (CA.), or China Lake NAWS.

COOPERATING LAND MANAGEMENT AGENCIES: Ely BLM District

AGENCY APPROVAL DOCUMENT: BLM Categorical Exclusion.

OTHER DOCUMENTS AND THEIR STATUS: Nevada Upland Game Species Management Plan. Western Quail Management Plan (Zornes and Bishop, 2009).

NOTIFICATION OF USER GROUPS: *(Include methods & dates)*

Local sportsmen will be notified and asked to participate in the release; BLM District Biologist will be notified prior to the release and copied with the release report.

HABITAT EVALUATION: Suitable mountain quail habitat exists in Jump Up Canyon. The species is native to the State of Nevada and these efforts are an attempt to get mountain quail established in areas of suitable habitat. The habitat in Jump Up Canyon is similar to that of China Lake Naval Air Weapons Station in southern California (potential source stock resource).

PREDATOR EVALUATION: No predator control efforts are recommended.

COMMENTS: Mountain quail were petitioned for listing in March of 2000. In 2003, the USFWS found that the petition did not present substantial scientific or commercial information that warranted listing of the species. Our re-establishment and augmentation efforts are an attempt to establish these birds into suitable habitats that are recovering from livestock overutilization, wildfires or where water developments have been constructed in otherwise adequate habitat.

NDOW REGION: Southern

DATE PREPARED: Rev. 7-12-2011



SMALL GAME RELEASE SITE PLANNING AND APPROVAL SUMMARY

SPECIES OR SUBSPECIES: Mountain Quail (*Oreortyx pictus*)

INTRODUCTION: X , or **AUGMENTATION:**

FISCAL YEAR OF PLANNED RELEASE: 2012 & 2013

RELEASE SITE:

NAME: Rainbow Canyon

COUNTY: Lincoln

LEGAL DESCRIPTION: T6S R66E Sec. 14, 23, 25

TRANSPLANT STOCK: Wildlands Conservancy properties (CA.), or China Lake NAWS near Ridgecrest, CA.

COOPERATING LAND MANAGEMENT AGENCIES: Ely BLM District

AGENCY APPROVAL DOCUMENT: BLM Categorical Exclusion.

OTHER DOCUMENTS AND THEIR STATUS: Nevada Upland Game Species Management Plan. Western Quail Management Plan (Zornes and Bishop, 2009).

NOTIFICATION OF USER GROUPS: *(Include methods & dates)*

Local sportsmen will be notified and asked to participate in the release; BLM District Biologist will be notified prior to the release and copied with the release report.

HABITAT EVALUATION: Suitable, diverse habitat exists for mountain quail within Rainbow Canyon. Mountain quail are native to the State of Nevada and these efforts are an attempt to get mountain quail established in areas of suitable habitat. The habitat in Rainbow Canyon is similar to select Wildlands Conservancy properties and the China Lake Naval Air Weapons Station located in southern California where the source stock will most likely comes from.

PREDATOR EVALUATION: No predator control efforts are recommended.

COMMENTS: Mountain quail were petitioned for listing in March of 2000. In 2003, the USFWS found that the petition did not present substantial scientific or commercial information that warranted listing of the species. Our re-establishment and augmentation efforts are an attempt to establish these birds into suitable habitats that are recovering from livestock overutilization, wildfires or where water developments have been constructed in otherwise adequate habitat.

NDOW REGION: Southern

DATE PREPARED: Rev. 7/12/2011



SMALL GAME RELEASE SITE PLANNING AND APPROVAL SUMMARY

SPECIES OR SUBSPECIES: Mountain Quail (*Oreortyx pictus*)

INTRODUCTION: X , or **AUGMENTATION:** _____

FISCAL YEAR OF PLANNED RELEASE: 2012 or 2013

RELEASE SITE:

NAME: Buck Mountain

COUNTY: White Pine

LEGAL DESCRIPTION: Township 21N, Range 56 East

TRANSPLANT STOCK: Oregon or in-state

COOPERATING LAND MANAGEMENT AGENCIES: The release sites could be located on either Private or BLM administered lands.

AGENCY APPROVAL DOCUMENT: None

OTHER DOCUMENTS AND THEIR STATUS: None

NOTIFICATION OF USER GROUPS: *(Include methods & dates)*

Cooperating partners will be notified prior to the release.

HABITAT EVALUATION: Mountain quail are a highly adaptable bird when it comes to habitat conditions and are most often associated within a tall dense mixed-brush and mixed forest community in close proximity to riparian areas. Within the Buck Mountain proposed release areas, a diverse shrub and perennial grass understory exists with a canopy of pinyon and juniper trees. Large continuous riparian habitats which are dominated by Wood's rose and willow species exists in both the upper and lower portions of the potential habitat. Adjacent rock outcroppings and steep slopes provide additional habitat complexity which should afford the birds with a wide array of habitat selection opportunities. Aspen communities also exist in some portions of the upper elevations of the range and would likely also be utilized in the summer months due to the seasonal movements which mountain quail typically exhibit. Adequate forage should be present due to the highly diverse diet composition of mountain quail. Anticipated forage includes: rose hips, currant berries, serviceberry, pine nuts, onion bulbs, termites, ants, Kentucky blue grass, and rushes. Winter precipitation, more specifically, deep or extremely persistent snow, has been shown to negatively affect Mountain Quail

populations. While portions of Buck Mountain receive significant winter moisture, the proposed release sites (on the western side of the range) have consistently proven to receive relatively low amounts of snowfall and in years when snow does occur, it rarely exceeds 6 inches for more than a week in the prime wintering quail habitat.

PREDATOR EVALUATION: Avian predators, in particular, Accipiter species, have been shown to be the largest predator for Mountain quail over terrestrial predators. Ample escape and nesting cover exists within the riparian and upland portions of the suitable mountain quail habitat in the Buck Mountain area and should provide optimal cover to minimize predation. Additionally, large efforts of sport harvest and governmental predator control efforts take place in this area each year for terrestrial predators. Additional predator control is not anticipated to be needed for a successful release.

COMMENTS: The topography and habitat of the Buck Mountain release site is extremely similar to that of the Desatoya Range and occurs at similar latitudes. Successfully established mountain quail populations exist in similar habitats in Oregon, as well, and thus either source stock would be ideal for this locale.

NDOW REGION: Eastern

DATE PREPARED: 7/11/2011



SMALL GAME RELEASE SITE PLANNING AND APPROVAL SUMMARY

SPECIES OR SUBSPECIES: Mountain Quail (*Oreortyx pictus*)

INTRODUCTION: _____ or **AUGMENTATION:** X

FISCAL YEAR OF PLANNED RELEASE: 2013

RELEASE SITE:

NAME: Virginia Range – Bullion Ravine

COUNTY: Storey

LEGAL DESCRIPTION: 11 S 270634 4353563

TRANSPLANT STOCK: Oregon Department of Fish and Wildlife.

COOPERATING LAND MANAGEMENT AGENCIES:

Bureau of Land Management – Carson District

AGENCY APPROVAL DOCUMENT: BLM Categorical Exclusion.

OTHER DOCUMENTS AND THEIR STATUS:

Nevada Upland Game Species Management Plan. Western Quail Management Plan (Zornes and Bishop, 2009).

NOTIFICATION OF USER GROUPS: *(Include methods & dates)*

The BLM will be notified prior to the release and provided with a post-release narrative.

HABITAT EVALUATION: Mixed shrub/Pinyon-Juniper woodland with a riparian corridor consisting of dense willow thickets and an understory of grasses and forbs. This canyon is steep and rocky with tall, dense cover. According to member of the county advisory board, there have been mountain quail in the canyon before, but not in great numbers. Suitable habitat is also available within about a half mile near Jumbo Falls. There is no grazing currently.

PREDATOR EVALUATION: Raptors, Corvid species and Grey Fox. No predator control is recommended.

COMMENTS: Release will increase distribution in the Virginia Range. Small numbers exist currently.

NDOW REGION: Western **DATE PREPARED:** Rev. 7-12-2011

Proposed Releases

Rio Grande Turkey

Location	Co.	Type
Introductions - priority		
Deer Lodge Canyon*	LN	I
Doc's Pass*	LN	I
Fairview Spring*	LN	I
Oak Well Hollow – Cedar Range*	LN	I
Iowa Canyon and Boone Creek – Toiyabe Range	LA	I
XJ Ranch – South Ruby Mountains	WP	I
Augmentations – priority after introductions		

**carryover – previously identified in FY10 & 11 biennial release plan.*



**SMALL GAME RELEASE SITE PLANNING
AND APPROVAL SUMMARY**

SPECIES OR SUBSPECIES: Rio Grande Turkey (*Meleagris gallopavo intermedia*)

INTRODUCTION: X , or **AUGMENTATION:** _____

FISCAL YEAR OF PLANNED RELEASE: 2012 and/or 2013

RELEASE SITE:

NAME: Deer Lodge Canyon

COUNTY: Lincoln

LEGAL DESCRIPTION: T1N R70E Sec. 26

TRANSPLANT STOCK: Utah Division of Wildlife Resources, California
Department of Fish and Game

COOPERATING LAND MANAGEMENT AGENCIES:

Bureau of Land Management, Caliente Field Office

AGENCY APPROVAL DOCUMENT: BLM Categorical Exclusion.

OTHER DOCUMENTS AND THEIR STATUS:

Nevada Upland Game Species Management Plan.

NOTIFICATION OF USER GROUPS: *(Include methods & dates)*

NDOW will notify NWTF members as well as local interested sportsmen to assist with trapping and release.

HABITAT EVALUATION: Habitat is suitable for wild turkeys with moderate amounts of oak brush, mountain mahogany, and thick pinyon and juniper woodlands. Water sources include springs and stock ponds. Various mature trees may serve as roosting trees.

PREDATOR EVALUATION: No predator control efforts are recommended.

COMMENTS: _____

NDOW REGION: Southern **DATE PREPARED:** Rev. 7-12-2011



SMALL GAME RELEASE SITE PLANNING AND APPROVAL SUMMARY

SPECIES OR SUBSPECIES: Rio Grande Turkey (*Meleagris gallopavo intermedia*)

INTRODUCTION: X, or **AUGMENTATION:** _____

FISCAL YEAR OF PLANNED RELEASE: 2012 and/or 2013

RELEASE SITE:

NAME: Doc's Pass

COUNTY: Lincoln

LEGAL DESCRIPTION: T6S R71E Sec. 6

TRANSPLANT STOCK: Utah Division of Wildlife Resources, California
Department of Fish and Game.

COOPERATING LAND MANAGEMENT AGENCIES:

Bureau of Land management, Caliente Field Office

AGENCY APPROVAL DOCUMENT: BLM Categorical Exclusion.

OTHER DOCUMENTS AND THEIR STATUS:

Nevada Upland Game Species Management Plan.

NOTIFICATION OF USER GROUPS: *(Include methods & dates)*

NDOW will notify NWTF members as well as local interested sportsmen to assist with trapping and release.

HABITAT EVALUATION: Habitat is suitable for wild turkeys with moderate amounts of oak brush and pinyon and juniper woodlands. Water sources include springs, stock ponds, and big game guzzlers. Mature trees that have burned, as well as mature oak trees may serve as roosting trees.

PREDATOR EVALUATION: No predator control efforts are recommended.

COMMENTS: _____

NDOW REGION: Southern **DATE PREPARED:** Rev. 7-12-2011



**SMALL GAME RELEASE SITE PLANNING
AND APPROVAL SUMMARY**

SPECIES OR SUBSPECIES: Rio Grande Turkey (*Meleagris gallopavo intermedia*)

INTRODUCTION: X, or **AUGMENTATION:** _____

FISCAL YEAR OF PLANNED RELEASE: 2012 and/or 2013

RELEASE SITE:

NAME: Fairview Spring

COUNTY: Lincoln

LEGAL DESCRIPTION: T4N R65E Sec. 26

TRANSPLANT STOCK: Available sources in state or out-of-state

COOPERATING LAND MANAGEMENT AGENCIES:

Bureau of Land Management, Caliente Field Office

AGENCY APPROVAL DOCUMENT: BLM Categorical Exclusion

OTHER DOCUMENTS AND THEIR STATUS:

Nevada Upland Game Species Management Plan.

NOTIFICATION OF USER GROUPS: *(Include methods & dates)*

NDOW will notify NWTF members as well as local interested sportsmen to assist with trapping and release.

HABITAT EVALUATION: Habitat is suitable for wild turkeys with moderate amounts of oak brush, and pinyon and juniper woodlands. Water sources include springs and stock ponds. Various mature trees may serve as roosting trees.

PREDATOR EVALUATION: No predator control efforts are recommended.

COMMENTS: _____

NDOW REGION: Southern **DATE PREPARED:** Rev. 7-12-2011



**SMALL GAME RELEASE SITE PLANNING
AND APPROVAL SUMMARY**

SPECIES OR SUBSPECIES: Rio Grande Turkey (*Meleagris gallopavo intermedia*)

INTRODUCTION: X , or **AUGMENTATION:** _____

FISCAL YEAR OF PLANNED RELEASE: 2012 and/or 2013

RELEASE SITE:

NAME: Oak Well Hollow

COUNTY: Lincoln

LEGAL DESCRIPTION: T4S R70E Sec. 6

TRANSPLANT STOCK: Available sources in state or out-of-state

COOPERATING LAND MANAGEMENT AGENCIES:

Bureau of Land Management, Caliente Field Office

AGENCY APPROVAL DOCUMENT: BLM Categorical Exclusion.

OTHER DOCUMENTS AND THEIR STATUS:

Nevada Upland Game Species Management Plan.

NOTIFICATION OF USER GROUPS: *(Include methods & dates)*

NDOW will notify NWTF members as well as local interested sportsmen to assist with trapping and release.

HABITAT EVALUATION: Habitat is suitable for wild turkeys with moderate amounts of oak brush and pinyon/juniper woodlands. Water sources include springs and stock ponds. Ponderosa Pine trees may serve as roosting trees in this area.

PREDATOR EVALUATION: No predator control efforts are recommended.

COMMENTS: _____

NDOW REGION: Southern **DATE PREPARED:** Rev. 7-12-2011



**SMALL GAME RELEASE SITE PLANNING
AND APPROVAL SUMMARY**

SPECIES OR SUBSPECIES: Rio Grande Turkeys (*Meleagris gallopavo intermedia*)

INTRODUCTION: X , or **AUGMENTATION:**

FISCAL YEAR OF PLANNED RELEASE: 2012 and/or 2013

RELEASE SITE:

NAME: Iowa Canyon, north Toiyabe Range

COUNTY: Lander

LEGAL DESCRIPTION: T22N R44E Sec. 1 and 2. ; T23N R44E Sec. 34 and 35

TRANSPLANT STOCK: Utah Division of Wildlife Resources, California
Department of Fish and Game

COOPERATING LAND MANAGEMENT AGENCIES:

Bureau of Land Management- Battle Mountain District, Mount Lewis Field Office

AGENCY APPROVAL DOCUMENT: BLM Categorical Exclusion

OTHER DOCUMENTS AND THEIR STATUS:

Cooperative agreement signed on 12/22/10 by Pauline Inchauspe from Silver Creek Ranches and permission granted to release on Silver Creek Ranches property if needed.

NOTIFICATION OF USER GROUPS: *(Include methods & dates)*

HABITAT EVALUATION: The Austin allotment was changed from a year round grazing permit to a controlled season of use permit within the last 10 years under the Battle Mountain BLM. The riparian and upland vegetation has shown a tremendous response with the elimination of hot season grazing under the current grazing permit. The habitat consists of Pinyon/Juniper and cottonwood stands along lower elevations with aspen, mahogany and cottonwood stands in upper elevations. The upland, riparian and stream habitat consists of sagebrush, wild rose, serviceberry, currant, elderberry and snowberry with a diverse mixture of forbs and grasses.

PREDATOR EVALUATION: No predator control is recommended as USDA regularly conducts predator control for domestic sheep in the Austin allotment.

COMMENTS. In the summer of 2010, two NWTF biologists along with the area

NDOW Game Division Biologist and one volunteer looked at potential turkey habitat in Lander County. Iowa Canyon was rated as the most appropriate habitat to sustain a wild population of Rio Grande Turkeys throughout the year.

NDOW REGION: Eastern **DATE PREPARED:** 7-12-2011



SMALL GAME RELEASE SITE PLANNING AND APPROVAL SUMMARY

SPECIES OR SUBSPECIES: Rio Grande Turkey (*Meleagris gallopavo intermedia*)

INTRODUCTION: _____, or **AUGMENTATION:** X

FISCAL YEAR OF PLANNED RELEASE: 2012 or 2013

RELEASE SITE:

NAME: XJ Ranch (South Ruby Mountains, Unit 103)

COUNTY: Elko

LEGAL DESCRIPTION: T25N., R55E., Section 1

TRANSPLANT STOCK: Utah Division of Wildlife Resources

COOPERATING LAND MANAGEMENT AGENCIES:

Cooperative agreement with landowner pending.

AGENCY APPROVAL DOCUMENT: None

OTHER DOCUMENTS AND THEIR STATUS: None

NOTIFICATION OF USER GROUPS: *(Include methods & dates)*

Land-owners in the area will be notified prior to the release.

HABITAT EVALUATION: The release area is located within a significant drainage that is comprised of an adequate riparian corridor of willows and rose, abundant roosting trees, and adequate escape cover for turkeys. There is a significant amount of pinyon/juniper forest surrounding the release site that will provide escape and roosting habitat, and another potential food source (pine nuts).

PREDATOR EVALUATION: USDA Wildlife Services routinely controls predators on the flats west of Ruby Mountains due to an active domestic sheep trailing route. The area surrounding the release site is also popular with sport hunters and trappers. No additional predator control is advised at this time.

COMMENTS: Turkeys initially enjoyed success on this property. However the population has decreased in recent years. The objective of this augmentation is reversing the downward population trend. Historically the landowner at this site has fed the turkeys during the winter months and it is anticipated that this supplemental feeding will continue.

NDOW REGION: Eastern

DATE PREPARED: 7/11/2011

Proposed Releases

Merriam's Turkey

Location	Co.	Type
<i>No Releases Planned in FY 2012 & 2013</i>		

Proposed Releases

Chukar Partridge

Location	Co.	Type
Southern Region	NY, ES, CL, LN	A



**SMALL GAME RELEASE SITE PLANNING
AND APPROVAL SUMMARY**

SPECIES OR SUBSPECIES: Chukar Partridge (*Alectoris chukar*)

INTRODUCTION: _____, or **AUGMENTATION:** X

FISCAL YEAR OF PLANNED RELEASE: 2012 & 2013

RELEASE SITE:

NAME: Southern Region

COUNTY: Clark, Esmeralda, Lincoln and Nye

LEGAL DESCRIPTION: not specific

TRANSPLANT STOCK: Chukar may be trapped from in-state or out-of-state sources and transplanted in Nevada for augmentation purposes.

COOPERATING LAND MANAGEMENT AGENCIES:

Bureau of Land Management, US Forest Service

AGENCY APPROVAL DOCUMENT: BLM Categorical Exclusion.

OTHER DOCUMENTS AND THEIR STATUS: Nevada Upland Game Species Management Plan.

NOTIFICATION OF USER GROUPS: *(Include methods & dates)*

Cooperators will be notified prior to each release and will be provided with a post-release narrative.

HABITAT EVALUATION: Releases will augment existing populations occupying suitable habitat (augmentation).

PREDATOR EVALUATION: No predator control is recommended.

COMMENTS: Chukar releases are occasionally used to address short-term declines attributed to prevailing unfavorable habitat conditions.

NDOW REGION: Southern

DATE PREPARED: Rev. 7-21-2011

Proposed Releases

Ruffed Grouse

Location	Co.	Type
Introductions – Priority for first available donor stock		
North Tuscarora Range - Toe Jam Creek*	EL	I
Snowstorm Mountains – Kelly Creek	EL	I
Pine Forest Range – Boyd Basin, Onion Valley Reservoir	HU	I
Augmentations – priority after introductions		
East Independence Range – Gance Creek or Jim Creek		
Ruby Mountains – Gennette Creek*	EL	A
Toiyabe Range - Big Creek & Birch Creek*	LA	A

* Carryover [previously identified in FY10-11 Biennial Release Plan]



**SMALL GAME RELEASE SITE PLANNING
AND APPROVAL SUMMARY**

SPECIES OR SUBSPECIES: Ruffed Grouse (*Bonasa umbellus*)

INTRODUCTION: X , or **AUGMENTATION:** _____

FISCAL YEAR OF PLANNED RELEASE: 2012 and/or 2013

RELEASE SITE:

NAME: North Tuscarora Range - Toe Jam Creek

COUNTY: Elko

LEGAL DESCRIPTION: T40N., R50E., Section 30

TRANSPLANT STOCK: Oregon, Idaho or in-state opportunities.

COOPERATING LAND MANAGEMENT AGENCIES:

Bureau of Land Management-Elko District. Also, Barrick Gold Mining Company owns a significant amount of land in the area and will be involved in the coordination and approval of this project.

AGENCY APPROVAL DOCUMENT: None, birds will be released on private lands

OTHER DOCUMENTS AND THEIR STATUS: Nevada Upland Game Species Management Plan.

NOTIFICATION OF USER GROUPS: *(Include methods & dates)*

A letter to the Permittee and Barrick to be sent when transplant occurs.

HABITAT EVALUATION: The Rock Creek Allotment has been rested for three years. This will enhance the condition of the riparian and aspen vegetative communities. After the rest, the area will be grazed in a way that will allow continued improvement of this system.

PREDATOR EVALUATION: Wildlife Services routinely controls coyotes on the flats east of the Independence Range. No specific predator control is recommended at this time.

COMMENTS: The topography in the North Tuscarora Range will allow for rapid expansion into other parts of the range. Ruffed grouse have the potential to distribute from Toe Jam Creek into McCann Creek, Rock Creek and the Cottonwood Drainages.

NDOW REGION: Eastern

DATE PREPARED: Rev. 7-12-2011



SMALL GAME RELEASE SITE PLANNING AND APPROVAL SUMMARY

SPECIES OR SUBSPECIES: Ruffed Grouse (*Bonasa umbellus*)

INTRODUCTION: X , or **AUGMENTATION:**

FISCAL YEAR OF PLANNED RELEASE: 2012 or 2013

RELEASE SITE:

NAME: Snowstorm Mountains – Kelly Creek

COUNTY: Elko

LEGAL DESCRIPTION: T39N, R45E.

TRANSPLANT STOCK: Oregon or in-state

COOPERATING LAND MANAGEMENT AGENCIES:

The release sites are located on state administered lands owned by NDOW.

AGENCY APPROVAL DOCUMENT: None

OTHER DOCUMENTS AND THEIR STATUS: None

NOTIFICATION OF USER GROUPS: *(Include methods & dates)*

Elko County Advisory Board to Manage Wildlife, land owners and other interested parties.

HABITAT EVALUATION: Conditions of riparian and aspen vegetative communities have greatly improved in recent years following the state purchase of private land in the Snowstorm Mountains; in particular the headwaters of the South Fork Little Humboldt River. A diverse understory exists within aspen communities found throughout the Snowstorm Mountains.

PREDATOR EVALUATION: Ample escape and nesting cover exists within aspen stands and riparian corridors throughout the mountain range. Predator control is not needed.

COMMENTS: The topography of the Snowstorm Mountains will allow for rapid expansion into other parts of the mountain range. Ruffed grouse have the potential to populate the South Fork Little Humboldt River, Sheep Creek, Jake Creek, Kelly Creek, Pole Creek, Winters Creek, Snowstorm Creek and First Creek.

NDOW REGION: Eastern

DATE PREPARED: 7/11/2011



**SMALL GAME RELEASE SITE PLANNING
AND APPROVAL SUMMARY**

SPECIES OR SUBSPECIES: Ruffed Grouse (*Bonasa umbellus*)

INTRODUCTION: X, or **AUGMENTATION:** _____

FISCAL YEAR OF PLANNED RELEASE: 2012 and/or 2013

RELEASE SITE:

NAME: Pine Forest Range, Boyd Basin

COUNTY: Humboldt County

LEGAL DESCRIPTION: T45N R30E Section 31

TRANSPLANT STOCK: Oregon, Idaho or other in-state opportunities.

COOPERATING LAND MANAGEMENT AGENCIES:

Release on private lands.

AGENCY APPROVAL DOCUMENT: Nevada Upland Game Species Management Plan.

OTHER DOCUMENTS AND THEIR STATUS:

Original release likely to occur on private lands.

NOTIFICATION OF USER GROUPS: *(Include methods & dates)*

Media releases will be coordinated; Humboldt County Advisory Board and other interested parties will be notified.

HABITAT EVALUATION: There is approximately 10,000 acres of aspen habitat in this range. Forage and drumming areas are available within most of these aspen and limber pine stands. Elderberry, snowberry, chokecherry and serviceberry are available as well as limited amounts of wild rose near riparian areas. All forage species are in good to excellent condition in the proposed release areas. Aspen stands are multi-age classed with adequate herbaceous understory for cover.

PREDATOR EVALUATION: Other upland game bird populations have increased in recent years in this area and are following normal cycles suggesting that there are no abnormal numbers of predators or a need for predator control in the area at this time.

COMMENTS: This release is expected to expand hunting opportunity and to firmly establish a population of ruffed grouse in the Pine Forest Range. Follow-up surveys will be conducted to assess the success of ruffed grouse in expected brooding areas.

NDOW REGION: Western

DATE PREPARED: Rev. 7-12-2011



**SMALL GAME RELEASE SITE PLANNING
AND APPROVAL SUMMARY**

SPECIES OR SUBSPECIES: Ruffed Grouse (*Bonasa umbellus*)

INTRODUCTION: _____, or **AUGMENTATION:** X

FISCAL YEAR OF PLANNED RELEASE: 2012 and/or 2013

RELEASE SITE:

NAME: East Independence Range - Gance Creek and/or Jim Creek

COUNTY: Elko

LEGAL DESCRIPTION: T39N, R53E, S1, or T40N, R54E, S30

TRANSPLANT STOCK: Oregon, Idaho or in-state sources

COOPERATING LAND MANAGEMENT AGENCIES:

U.S Forest Service-Mountain City Ranger District

AGENCY APPROVAL DOCUMENT: BLM Categorical Exclusion

OTHER DOCUMENTS AND THEIR STATUS: Nevada Upland Game Species Management Plan.

NOTIFICATION OF USER GROUPS: *(Include methods & dates)*

None required

HABITAT EVALUATION: The East Independence Range Allotment has been under a two-year-rest rotation grazing system for 14 years. All habitat types, including aspen, have responded very well. The aspen stands are now multi-layered with abundant grass and forbs in the understory. The East Independence Range contains some of the best condition aspen stands in the Elko County. Forage plants such as chokecherry, rose, currant, elderberry and serviceberry are abundant and in good condition.

PREDATOR EVALUATION: USDA Wildlife Services routinely controls coyotes on the flats east of the Independence Range. No specific predator control is recommended.

COMMENTS: The topography in the East Independence Range will allow for rapid expansion into other parts of the range. Ruffed grouse have the potential to spread from Gance Creek to the North Fork of the Humboldt River on the east side of the range and into Burns Basin, Happy Camp and into Jacks Creek on the West side of the range. This release site has been approved by the USFS. Four ruffed grouse were released into this site in 2005.

NDOW REGION: Eastern

DATE PREPARED: Rev. 7-12-2011



**SMALL GAME RELEASE SITE PLANNING
AND APPROVAL SUMMARY**

SPECIES OR SUBSPECIES: Ruffed grouse (*Bonasa umbellus*)

INTRODUCTION: _____, or **AUGMENTATION:** X

FISCAL YEAR OF PLANNED RELEASE: 2012 or 2013

RELEASE SITE:

NAME: Toiyabe Range - Big Creek & Birch Creek

COUNTY: Lander

LEGAL DESCRIPTION: T.16N. R.43E. Sec. 20 and T.18N. R.44E. Sec. 29

TRANSPLANT STOCK: Idaho, Oregon, or in-state opportunities.

COOPERATING LAND MANAGEMENT AGENCIES:

USFS

AGENCY APPROVAL DOCUMENT: USFS Categorical Exclusion.

OTHER DOCUMENTS AND THEIR STATUS:

Nevada Upland Game Species Management Plan.

NOTIFICATION OF USER GROUPS: *(Include methods & dates)*

Lander County Advisory Board to Manage Wildlife

HABITAT EVALUATION: Riparian community stable with good understory present in the form of grasses and forbs. Aspen stands in good ecologic condition with substantial succoring.

PREDATOR EVALUATION: Birds will be from wild-trapped stock that are used to dealing with predators. No control needed.

COMMENTS: 26 ruffed grouse were released at this site in FY2010.

NDOW REGION: Eastern

DATE PREPARED: Rev. 7-12-2011



**SMALL GAME RELEASE SITE PLANNING
AND APPROVAL SUMMARY**

SPECIES OR SUBSPECIES: Ruffed Grouse (*Bonasa umbellus*)

INTRODUCTION: _____, or **AUGMENTATION:** X

FISCAL YEAR OF PLANNED RELEASE: 2012 and/or 2013

RELEASE SITE:

NAME: Ruby Mountains (Unit 102) - Gennette Creek

COUNTY: Elko

LEGAL DESCRIPTION: T29N, R57E

TRANSPLANT STOCK: Idaho, Oregon, or in-state opportunities.

COOPERATING LAND MANAGEMENT AGENCIES:

U.S. Forest Service

AGENCY APPROVAL DOCUMENT: This release is in compliance with the existing Forest Plan.

OTHER DOCUMENTS AND THEIR STATUS:

Nevada Upland Game Species Management Plan.

NOTIFICATION OF USER GROUPS: *(Include methods & dates)*

Media releases will be coordinated, Elko County Wildlife Advisory Board and other interested parties will be notified.

HABITAT EVALUATION: This is an augmentation in the Ruby Mountains where birds were first released in the 1960's. There is ample habitat available with only occasional bird observations reported. The augmentation will assist with further establishment within the southern portion of Unit 102.

PREDATOR EVALUATION: Other upland game bird populations have increased in recent years in this area and are following normal cycles suggesting that there are no abnormal numbers of predators or a need for predator control in the area at this time.

COMMENTS: This release is expected to more firmly establish ruffed grouse populations in a portion of the Ruby Mountains with excellent habitat and increase the genetic diversity of ruffed grouse populations in the Rubies.

NDOW REGION: Eastern **DATE PREPARED:** Rev. 7-12-2011

Proposed Releases

Columbian Sharp-tailed Grouse

Location	Co.	Type
Bull Run Range – Columbia Basin	EL	I



SMALL GAME RELEASE SITE PLANNING AND APPROVAL SUMMARY

SPECIES OR SUBSPECIES: Columbian Sharp-tailed Grouse (*Tympanuchus phasianellus*)

INTRODUCTION: X , or **AUGMENTATION:** _____

FISCAL YEAR OF PLANNED RELEASE: 2012 through 2017

RELEASE SITE:

NAME: Columbia Basin, Bull Run Range

COUNTY: Elko

LEGAL DESCRIPTION: T43N, R52E section 20 or 21

TRANSPLANT STOCK: Ongoing coordination with Idaho Department of Fish and Game and Utah Division of Wildlife Resources.

COOPERATING LAND MANAGEMENT AGENCIES:

Bureau of Land Management-Elko, USFS, IL Ranch and other private entities.

AGENCY APPROVAL DOCUMENT: Categorical Exclusion (not yet completed)

OTHER DOCUMENTS AND THEIR STATUS: Nevada Upland Game Species Management Plan.

NOTIFICATION OF USER GROUPS: *(Include methods & dates)*

Private land owners will be contacted prior to release.

HABITAT EVALUATION: The Columbia Basin area contains several habitat types conducive to supporting sharp-tailed grouse. The lower elevation areas support sagebrush-steppe grassland communities that are in good to excellent ecological condition. Grasses, especially Idaho fescue, dominate the understory. There are also wet meadows with healthy willow corridors scattered throughout much of the area. The mid-elevation areas are characterized by excellent mountain brush communities. Serviceberry, which is the sharp-tailed grouse's winter mainstay, is well represented throughout the basin. Aspen stands and chokecherry pockets dominate the draws in the mountains. These stands also are represented by a healthy herbaceous community.

PREDATOR EVALUATION: Wildlife Services routinely controls coyotes in the Columbia Basin area. There is some potential for raven control during the first couple years of a release. The need for raven control will be evaluated prior to the release.

More importantly, with such good habitat conditions, sharp-tailed grouse can more effectively hide and escape from predators.

COMMENTS: The habitat for sharp-tailed grouse is excellent in this area and it is extensive. A concern with the area is the significant amount of private land within Columbia Basin. It is felt that enough of the area is public and accessible that it warrants the reestablishment of sharp-tailed grouse. Habitat conditions in this area are considered to be good to excellent based on the condition of the mountain brush, understory and riparian communities.

NDOW REGION: Eastern

DATE PREPARED: Rev. 7-12-2011