

Mountain Lion Seasons and Harvest Limits

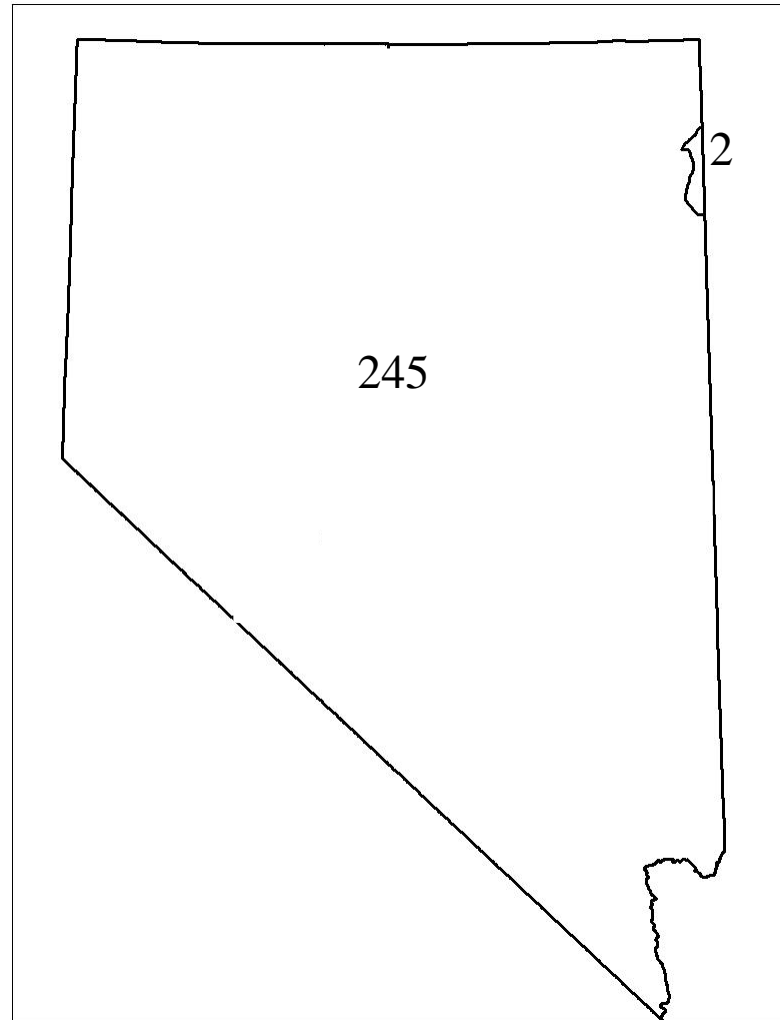
CR – 19-04

Mountain Lion Season and Harvest Limits

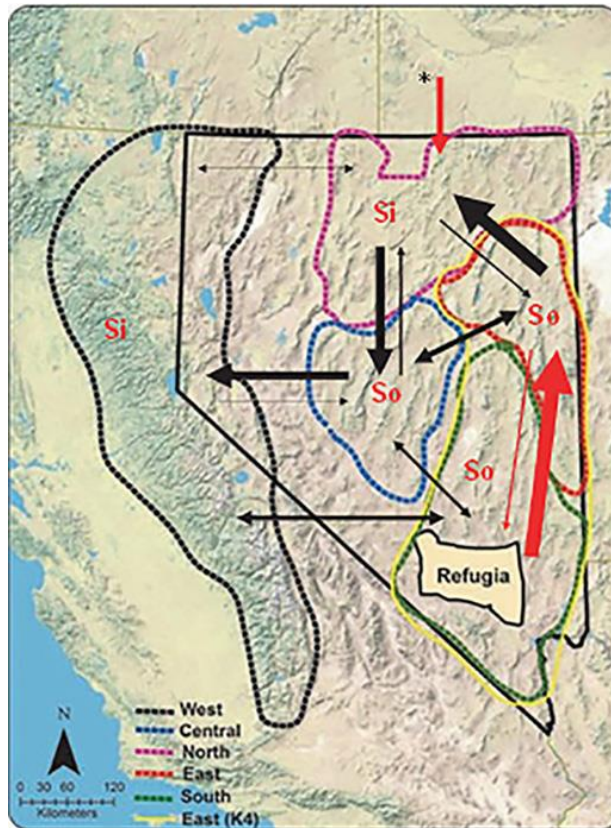
Recommendation

Statewide harvest
limit of 247
mountain lions
245 statewide
(except Unit 091)
2 for Unit 091

Effect of 091
interstate hunt
with Utah

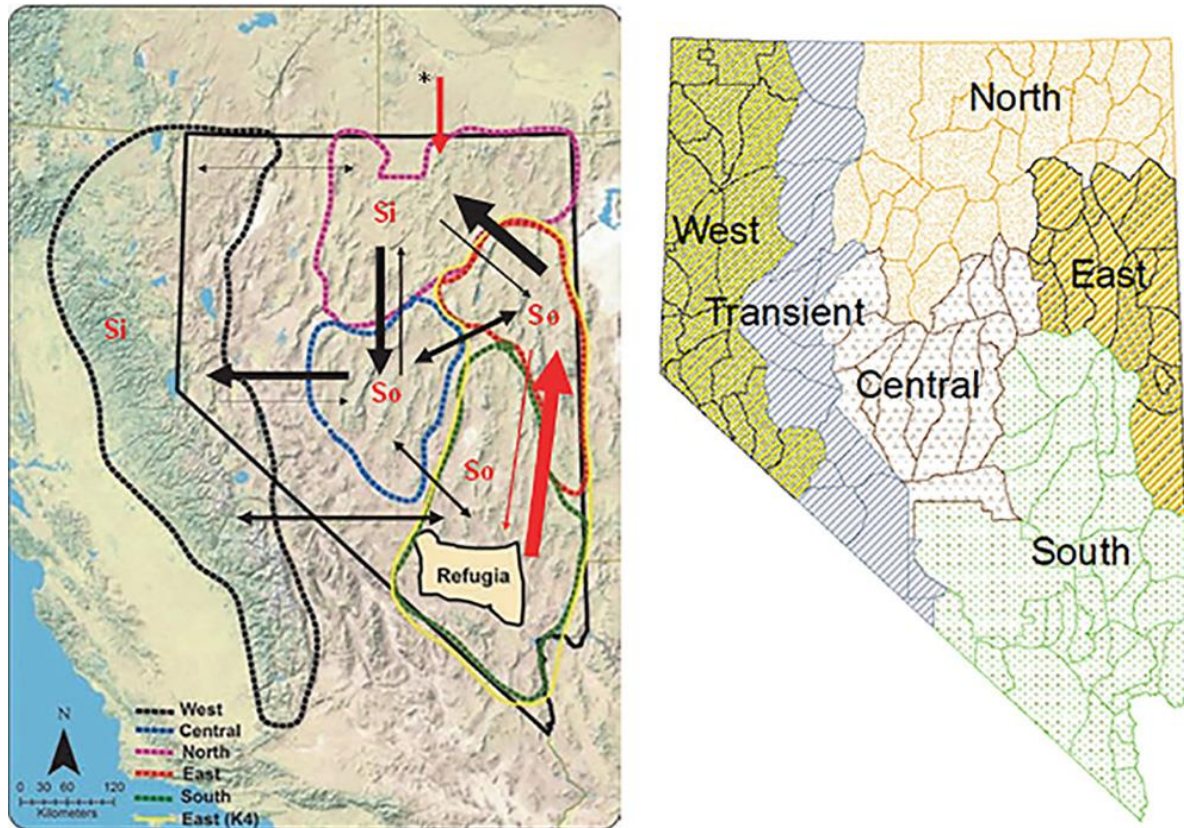


Mountain Lion Season and Harvest Limits



Andreasen et al. 2012

Mountain Lion Season and Harvest Limits



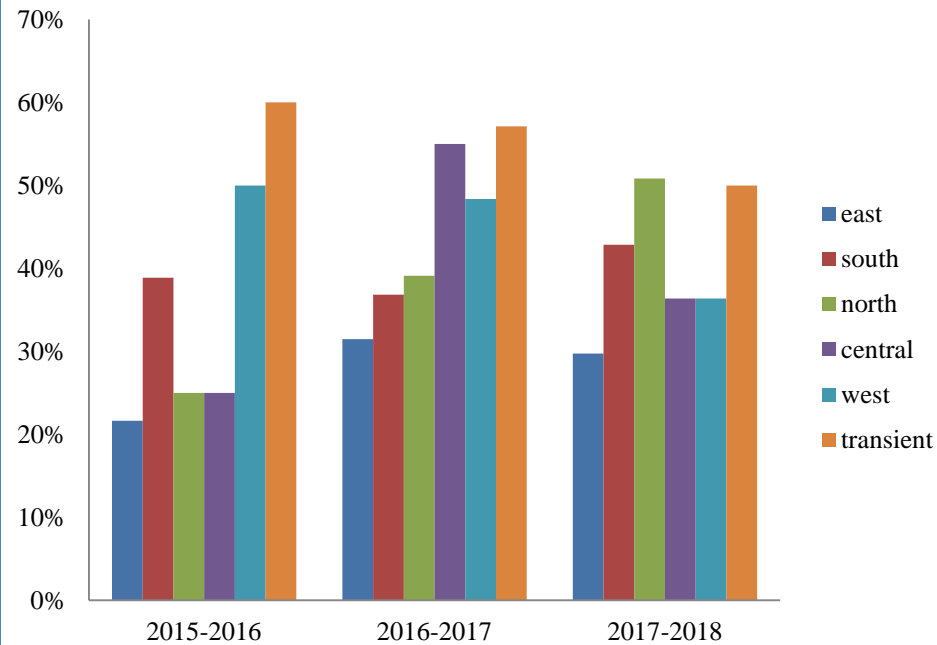
Andreasen et al. 2012

Mountain Lion Season and Harvest Limits

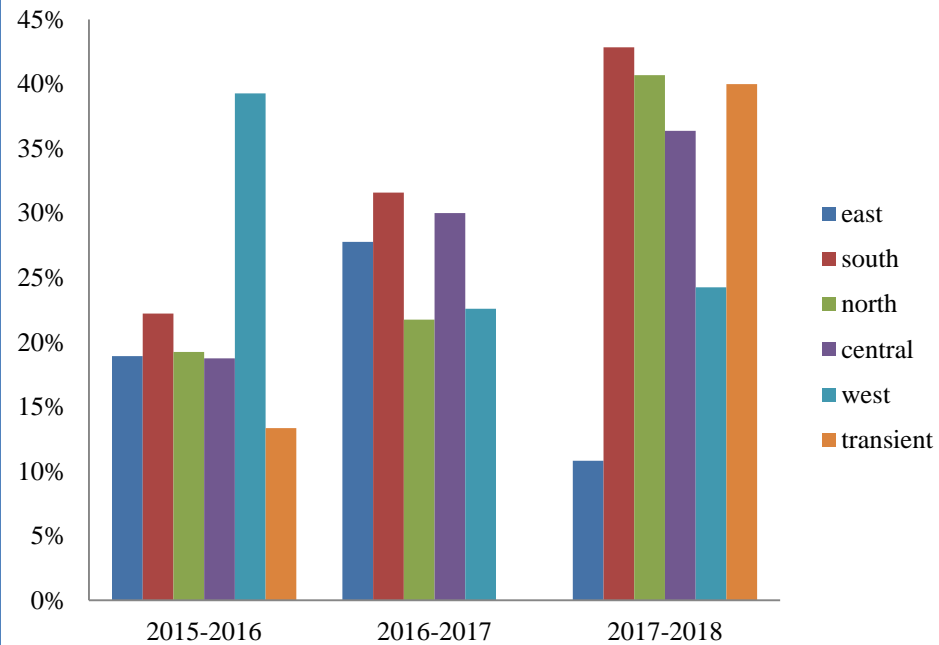
- Two thresholds to consider (on a 3-year average):
- Adult female harvest (35%)
- Overall female harvest (50%)

Mountain Lion Season and Harvest Limits

Overall Female Harvest



Adult Female Harvest



Mountain Lion Season and Harvest Limits

Unit Groups	Harvest Limits
142,143, 144, 145, 155, 161, 162, 163, 171, 172, 173, 183, 184, 251	245
102, 103, 104, 105, 106, 108, 109, 111, 112, 113, 114, 115, 121, 231	
044, 045, 046, 051, 061, 062, 064, 065, 066, 067, 068, 071, 072, 073, 074, 075, 076, 077, 078, 079, 081, 101, 107, 141, 151, 152, 153, 154, 156	
011, 012, 013, 014, 015, 021, 022, 032, 034, 041, 192, 194, 195, 196, 201, 202, 203, 204, 206, 291	
131, 132, 133, 134, 164, 221, 222, 223, 241, 242, 243, 244, 245, 253, 254, 261, 262, 263, 264, 265, 266, 267, 268, 271, 272	
031, 035, 042, 043, 181, 182, 205, 207, 208, 211, 212, 213, 252	
091*	2
033, 269, 280, 281, 282, 283, 284, 286	Closed Units

Mountain Lion Season and Harvest Limits

- The limit is one animal per tag, 2 tag maximum per person
- Hunting hours are any time day or night
- Hunter or guide must call 1-800 number to ensure season remains open

Recommendation

- The Department recommends that the Commission **VOTE TO ADOPT COMMISSION REGULATION 19 - 04, 2019–2020 MOUNTAIN LION SEASONS AND HARVEST LIMITS AS PRESENTED**