

Mountain Lion Seasons and Harvest Limits

CR – 21-05

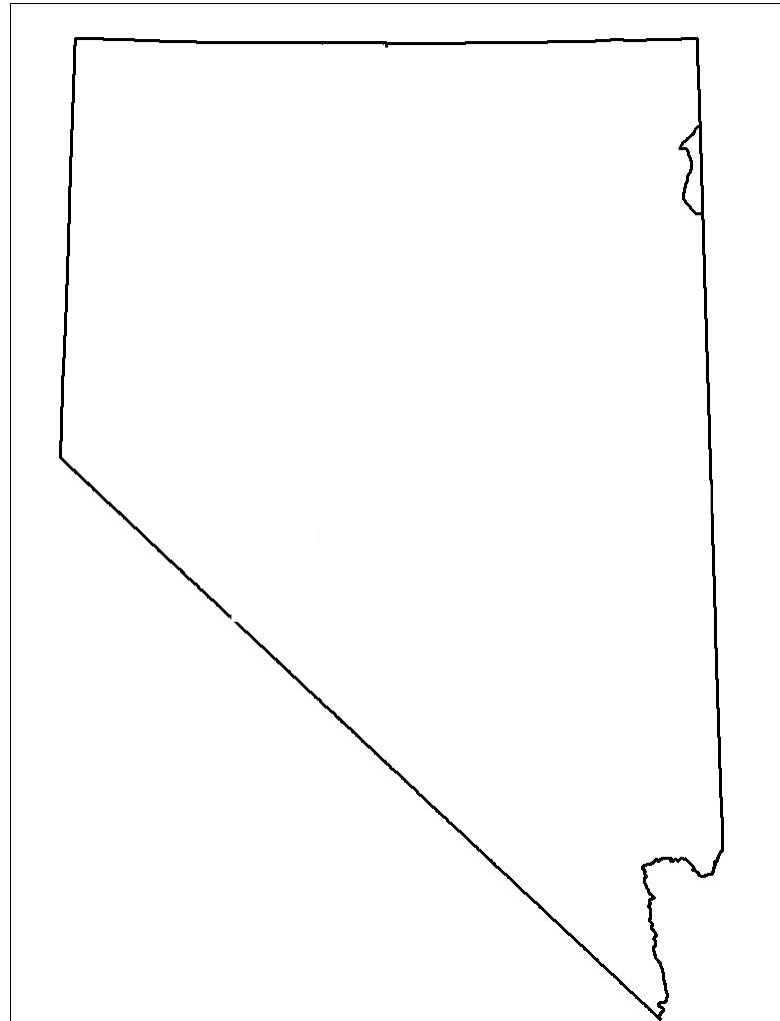
Mountain Lion Season and Harvest Limits

Recommendation

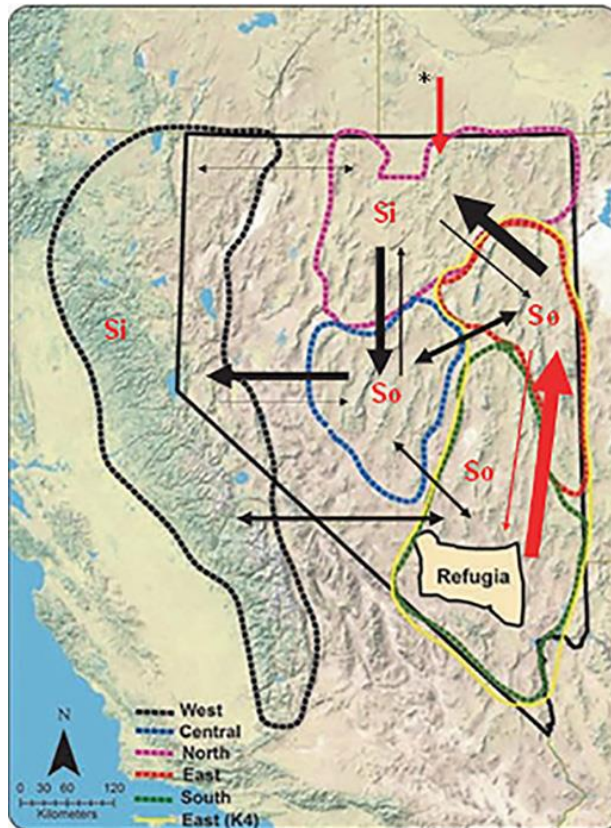
Statewide harvest
limit of 247
mountain lions

247 statewide

Maintain 091
interstate hunt
with Utah

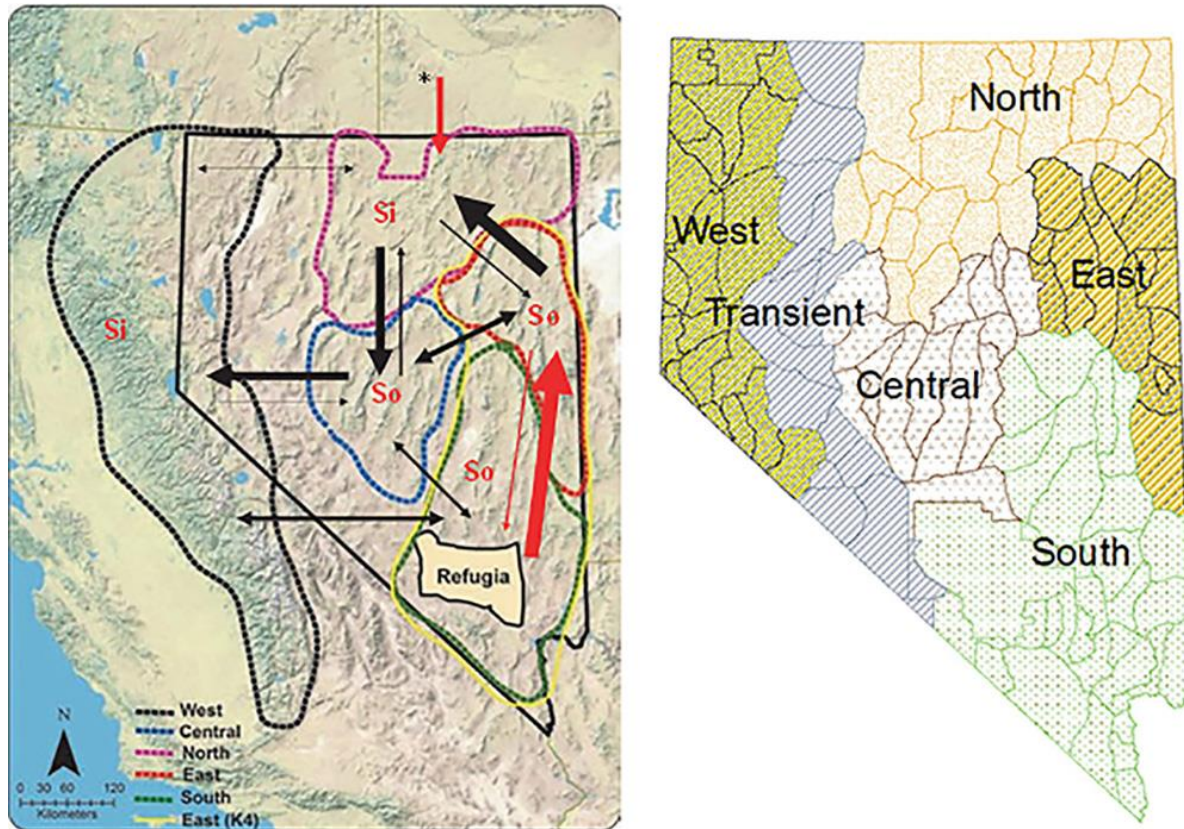


Mountain Lion Season and Harvest Limits



Andreasen et al. 2012

Mountain Lion Season and Harvest Limits



Andreasen et al. 2012

Mountain Lion Season and Harvest Limits

- Two thresholds to consider (on a 3-year average):
- Adult female harvest (35%)
- Overall female harvest (50%)

Mountain Lion Season and Harvest Limits

	Overall Female Harvest	Adult Female Harvest
East	38%	29%
South	21%	21%
North	41%	33%
Central	41%	31%
West	37%	24%
Transient	35%	29%

Mountain Lion Season and Harvest Limits

Unit Groups	Harvest Limits
142,143, 144, 145, 155, 161, 162, 163, 171, 172, 173, 183, 184, 251	247
102, 103, 104, 105, 106, 108, 109, 111, 112, 113, 114, 115, 121, 231	
044, 045, 046, 051, 061, 062, 064, 065, 066, 067, 068, 071, 072, 073, 074, 075, 076, 077, 078, 079, 081, 091*, 101, 107, 141, 151, 152, 153, 154, 156	
011, 012, 013, 014, 015, 021, 022, 032, 034, 041, 192, 194, 195, 196, 201, 202, 203, 204, 206, 291	
131, 132, 133, 134, 164, 221, 222, 223, 241, 242, 243, 244, 245, 253, 254, 261, 262, 263, 264, 265, 266, 267, 268, 271, 272	
031, 035, 042, 043, 181, 182, 205, 207, 208, 211, 212, 213, 252	
033, 269, 280, 281, 282, 283, 284, 286	Closed Units

Mountain Lion Season and Harvest Limits

- The limit is one animal per tag, 2 tag maximum per person
- Hunting hours are any time day or night
- Hunter or guide must call 1-800 number to ensure season remains open

Recommendation

- The Department recommends that the Commission **VOTE TO ADOPT COMMISSION REGULATION 21 - 05, 2021–2022 MOUNTAIN LION SEASONS AND HARVEST LIMITS AS PRESENTED**