

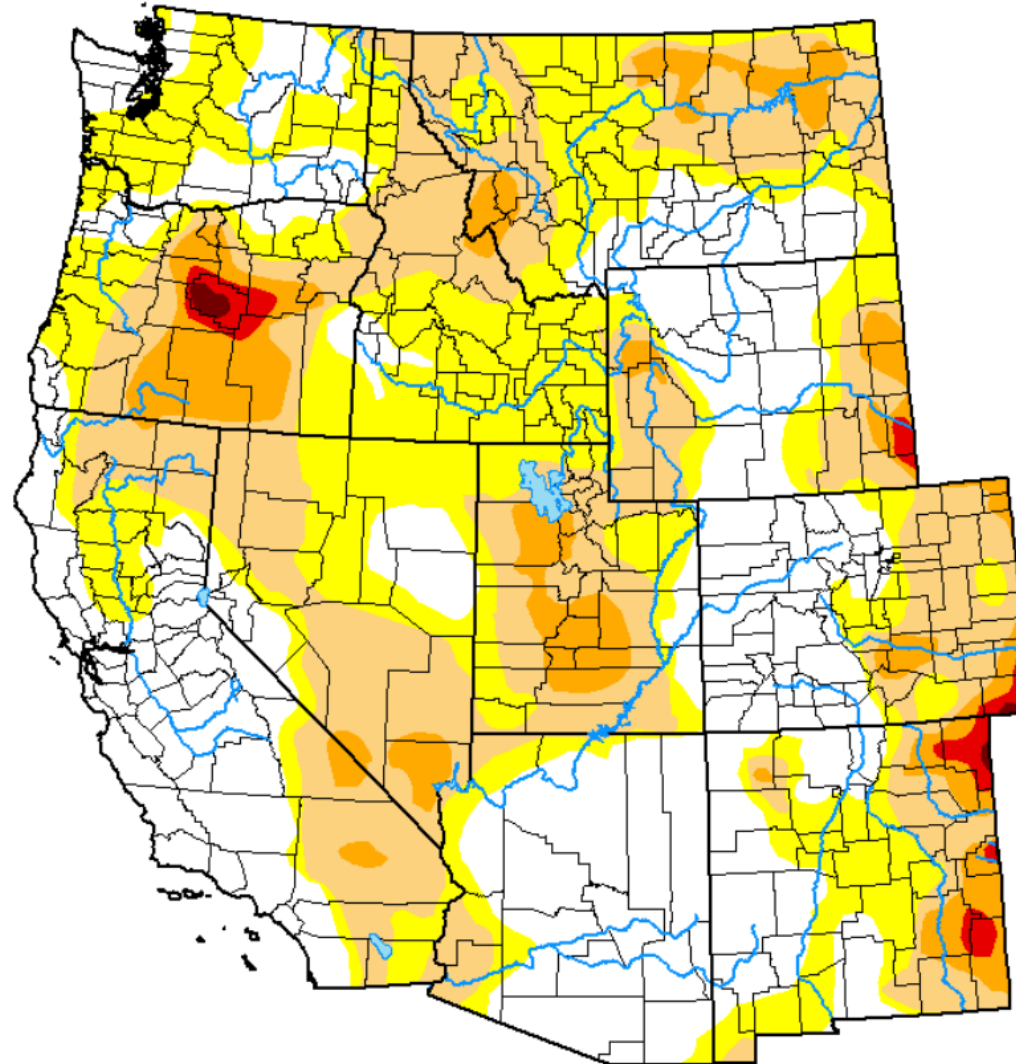
# Nevada's 2022-2023 Bighorn Sheep & Mountain Goat Statewide Harvest and Population Status











March 28, 2023

Series of drought  
monitor maps every  
6 months April 2019  
- March 2023



***Intensity:***

-  None
-  D0 Abnormally Dry
-  D1 Moderate Drought
-  D2 Severe Drought
-  D3 Extreme Drought
-  D4 Exceptional Drought

*The Drought Monitor focuses on broad-scale conditions. Local conditions may vary. For more information on the Drought Monitor, go to <http://droughtmonitor.unl.edu/About.aspx>*

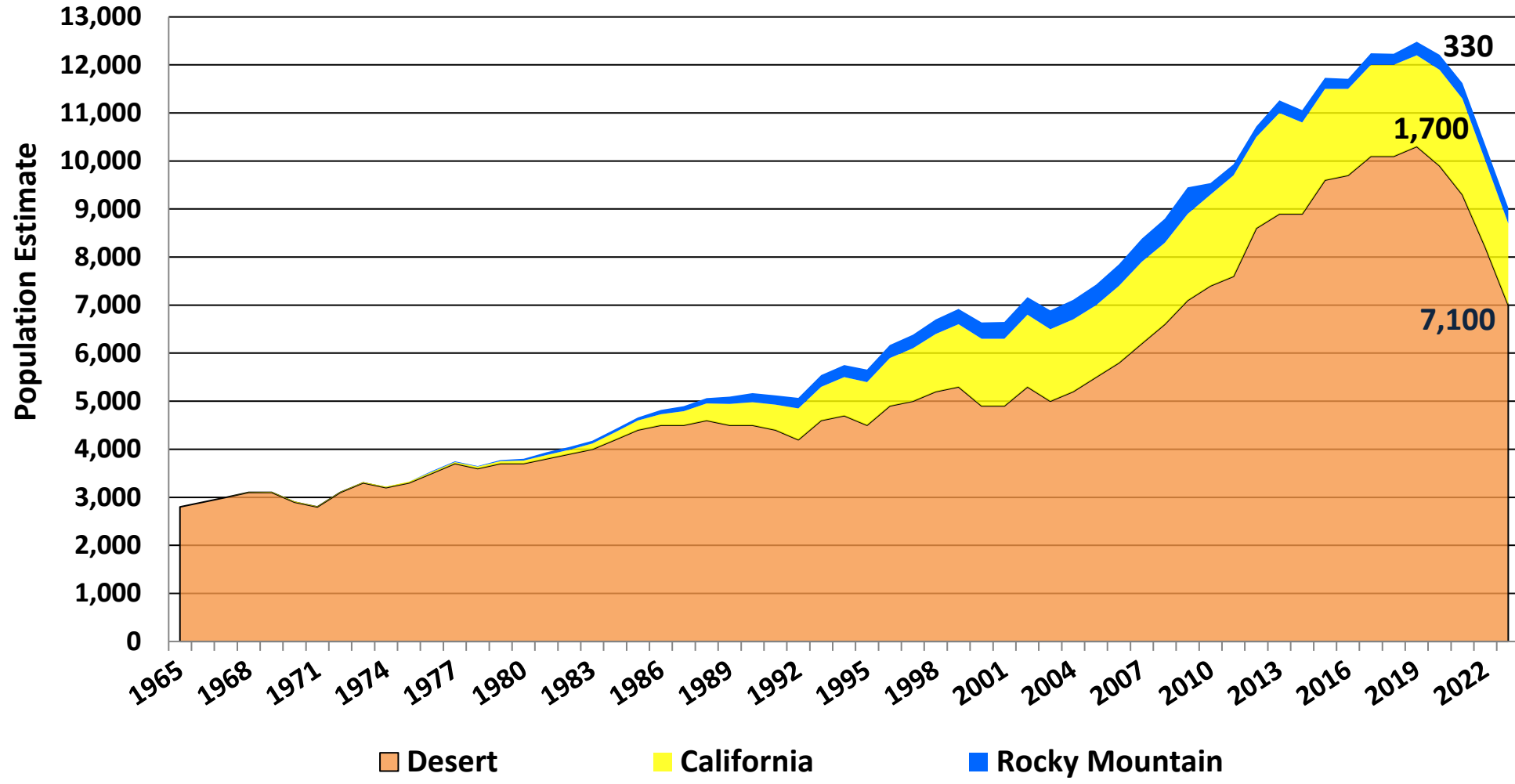
***Author:***

Curtis Riganti  
National Drought Mitigation Center

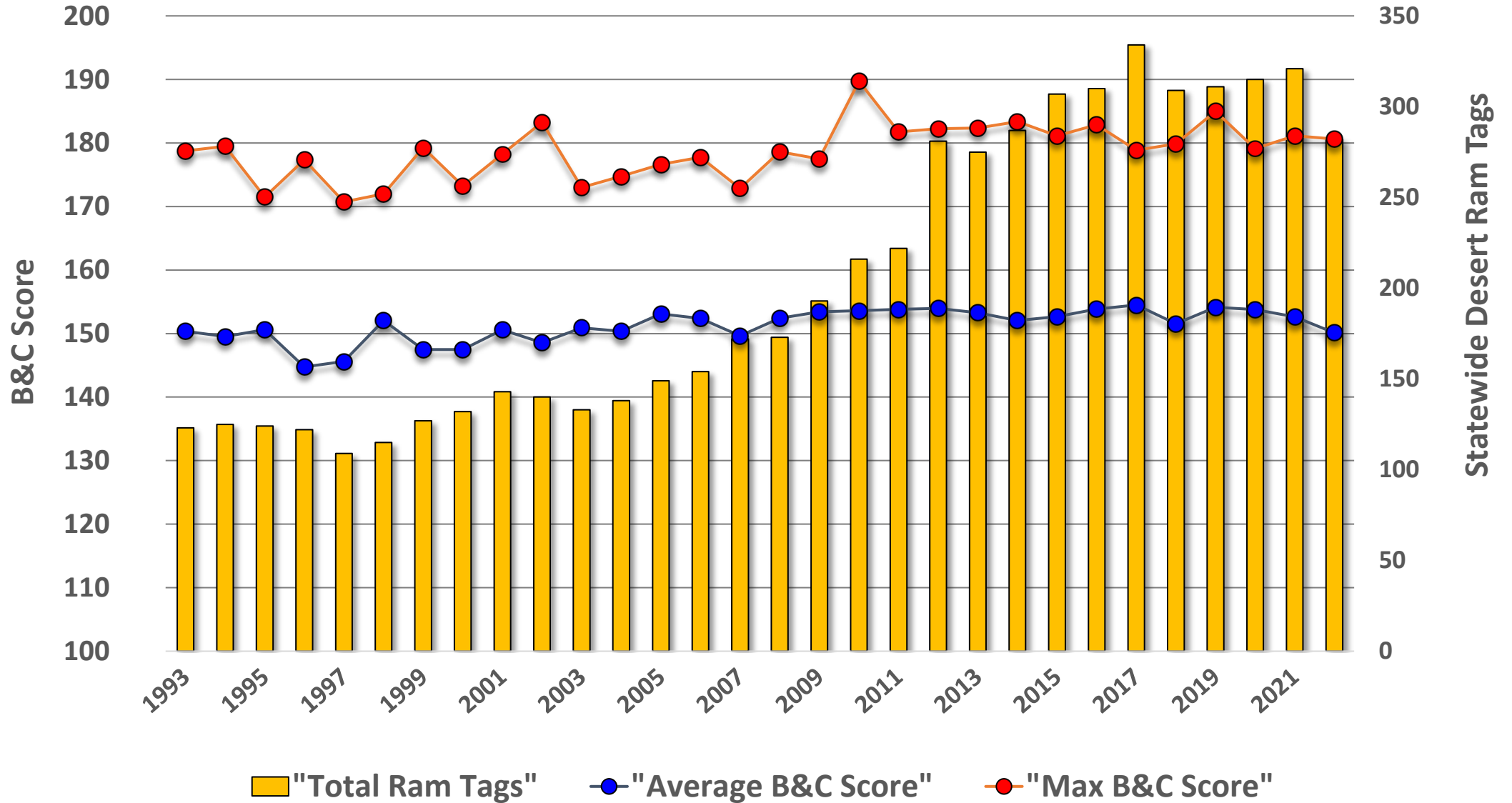


[droughtmonitor.unl.edu](http://droughtmonitor.unl.edu)

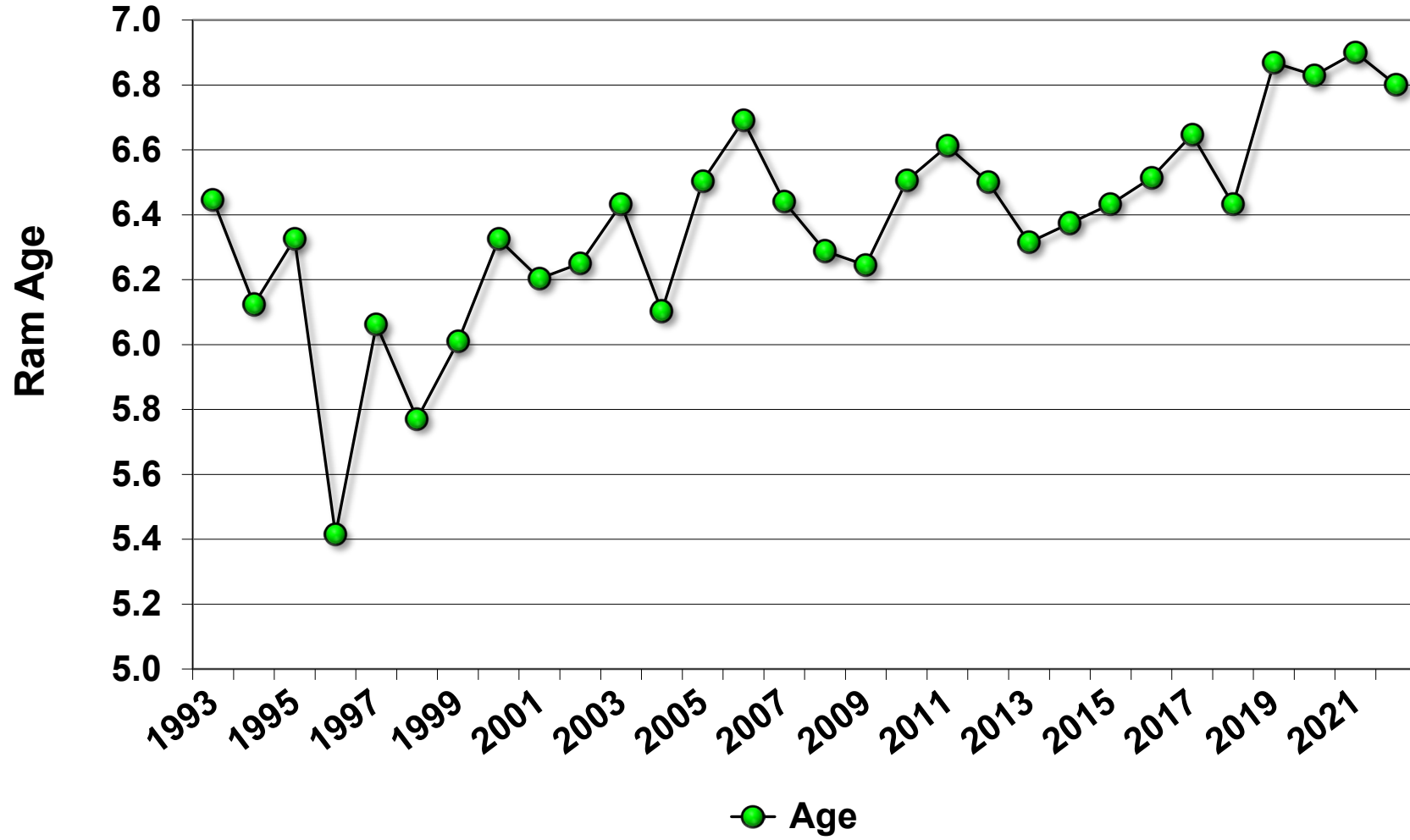
## Statewide Bighorn Sheep Subspecies Population Estimates



# Nevada Desert Bighorn Ram Harvest Trend 1993 - 2022



# Nevada Desert Bighorn Ram Harvest Average Age



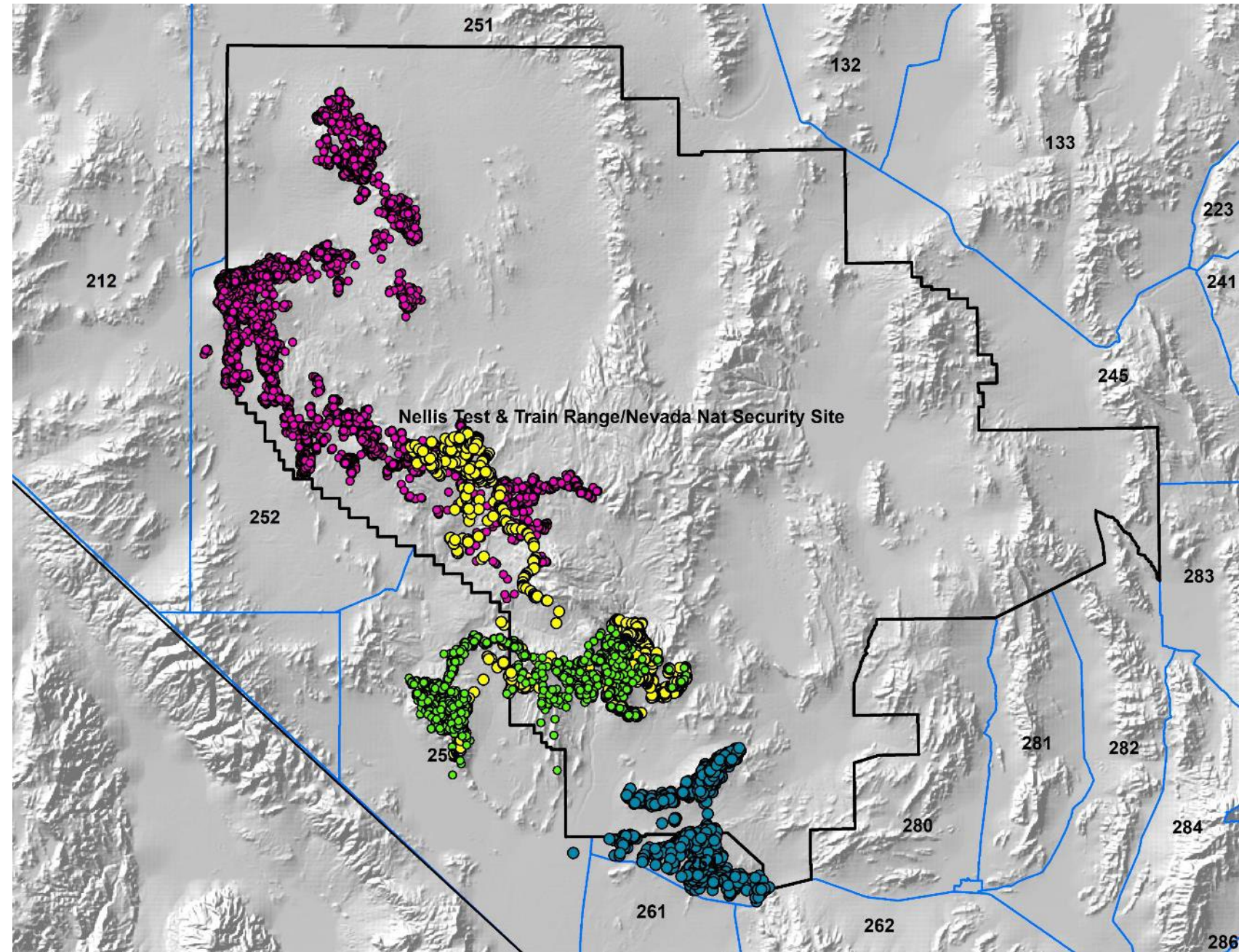
## Inaugural One-horn Ram Hunt in January 2023

Representative one-horn ram harvested by hunter who invested the time and boots on the ground to find and harvest an 11-year old ram with only a few inches of horn remaining on left horn



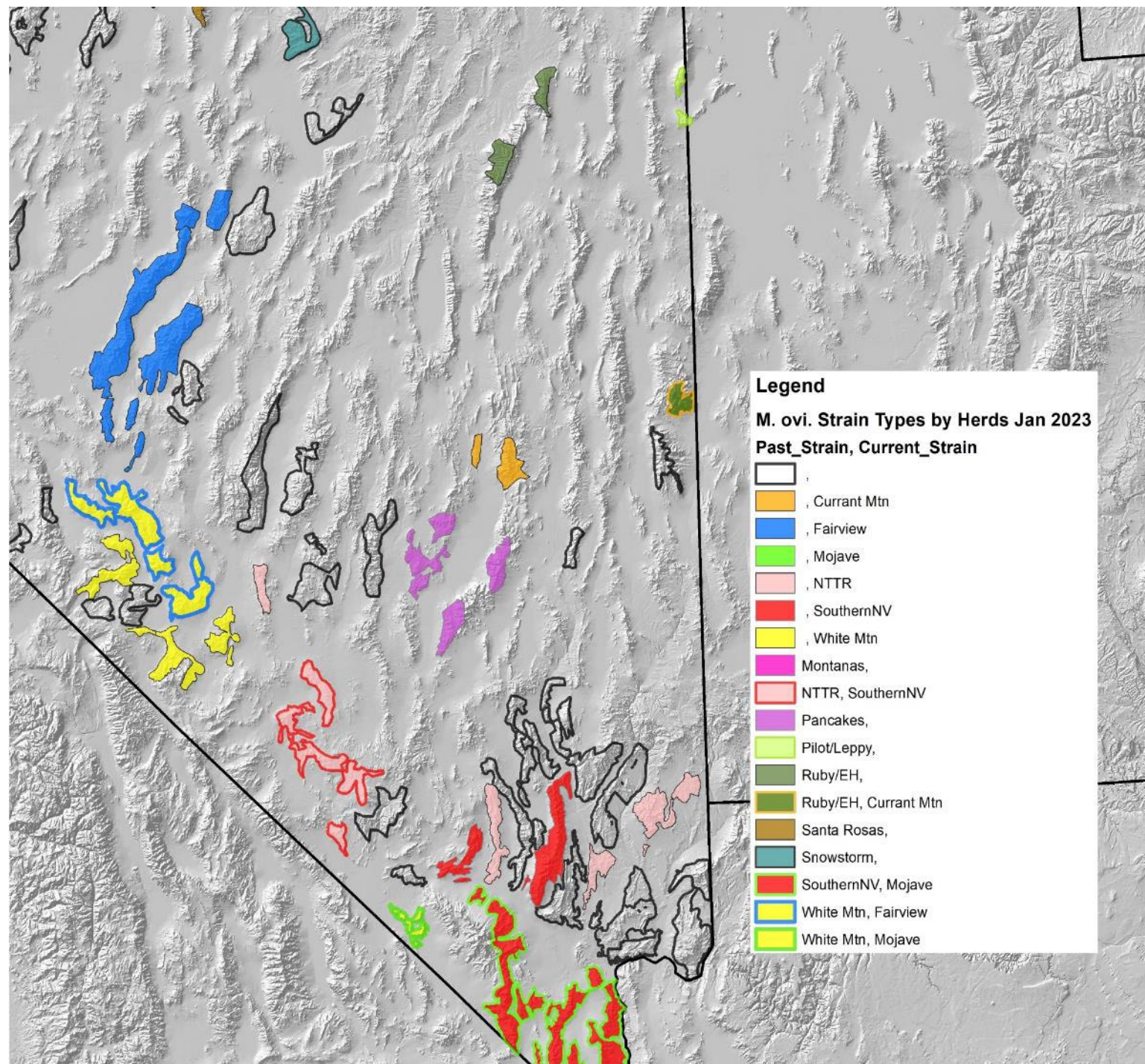
## Example of Bighorn Herd Connectivity allowing for pathogen transmission

Depicted by satellite collar data from rams in associated with the Stonewall Mountain-NTTR-Bare Mountain-NNSS-Specter Range metapopulation that create “leapfrog” interactions with adjacent herds. Each color are different groups of rams.

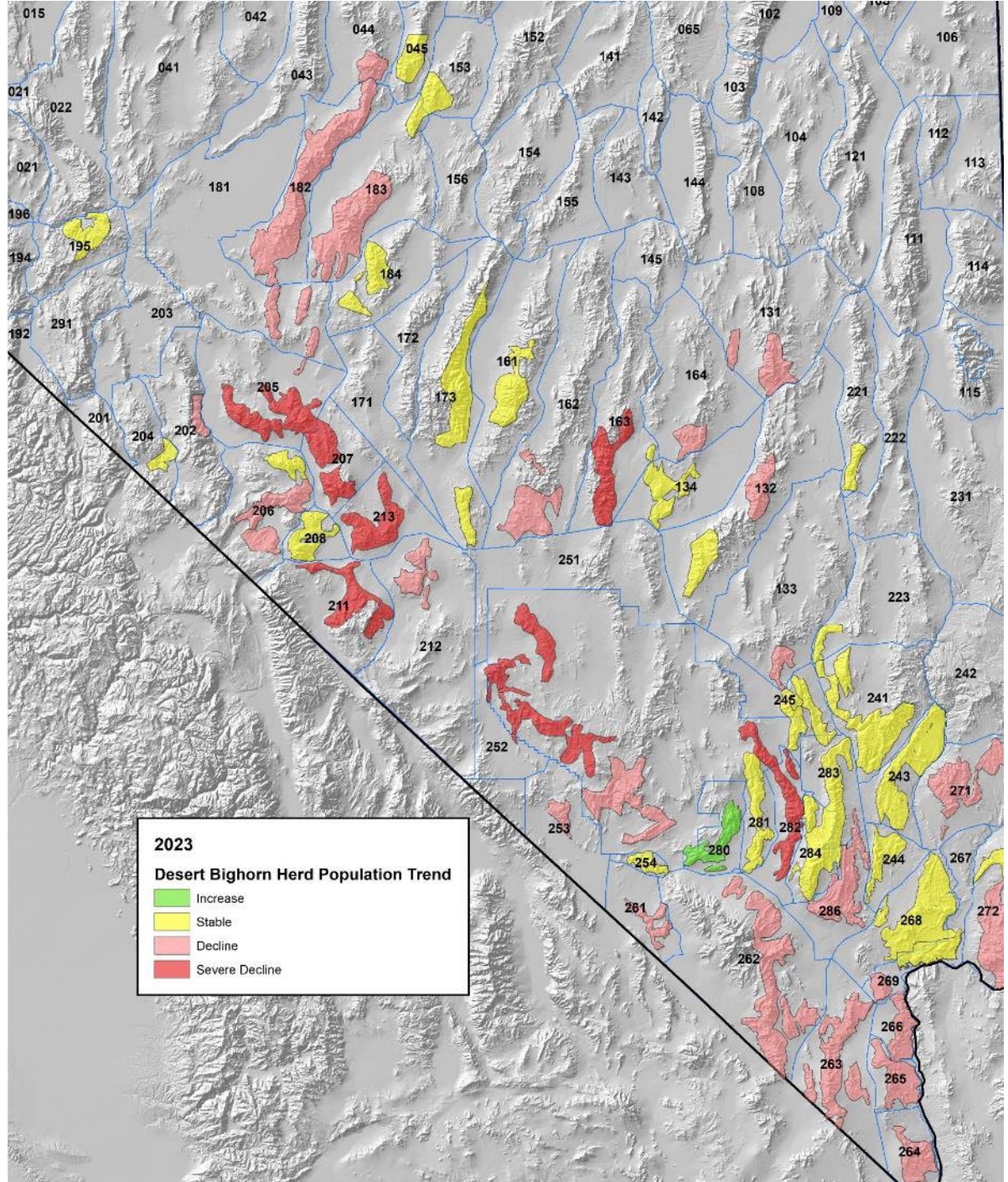


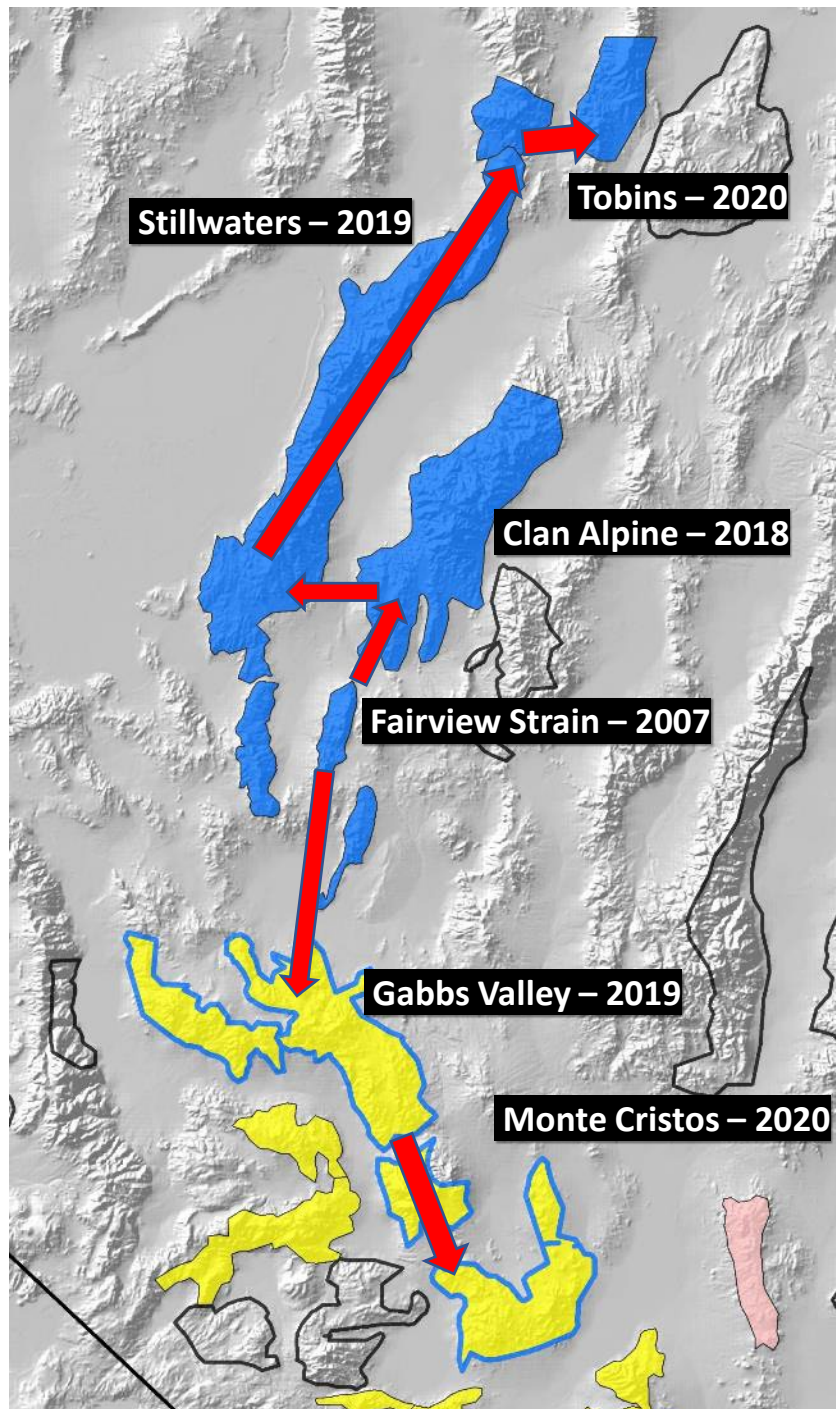
## Movi Strain Mapping

- most desert bighorn herds
- involving many herds exposed to at least 2 different strains
- some virulent, some not so much,
- variable population response to same strain due to many covariates – animal density, forage base, water distribution, nursery dynamics, etc.
- most pathogen spillovers today are bighorn to bighorn.



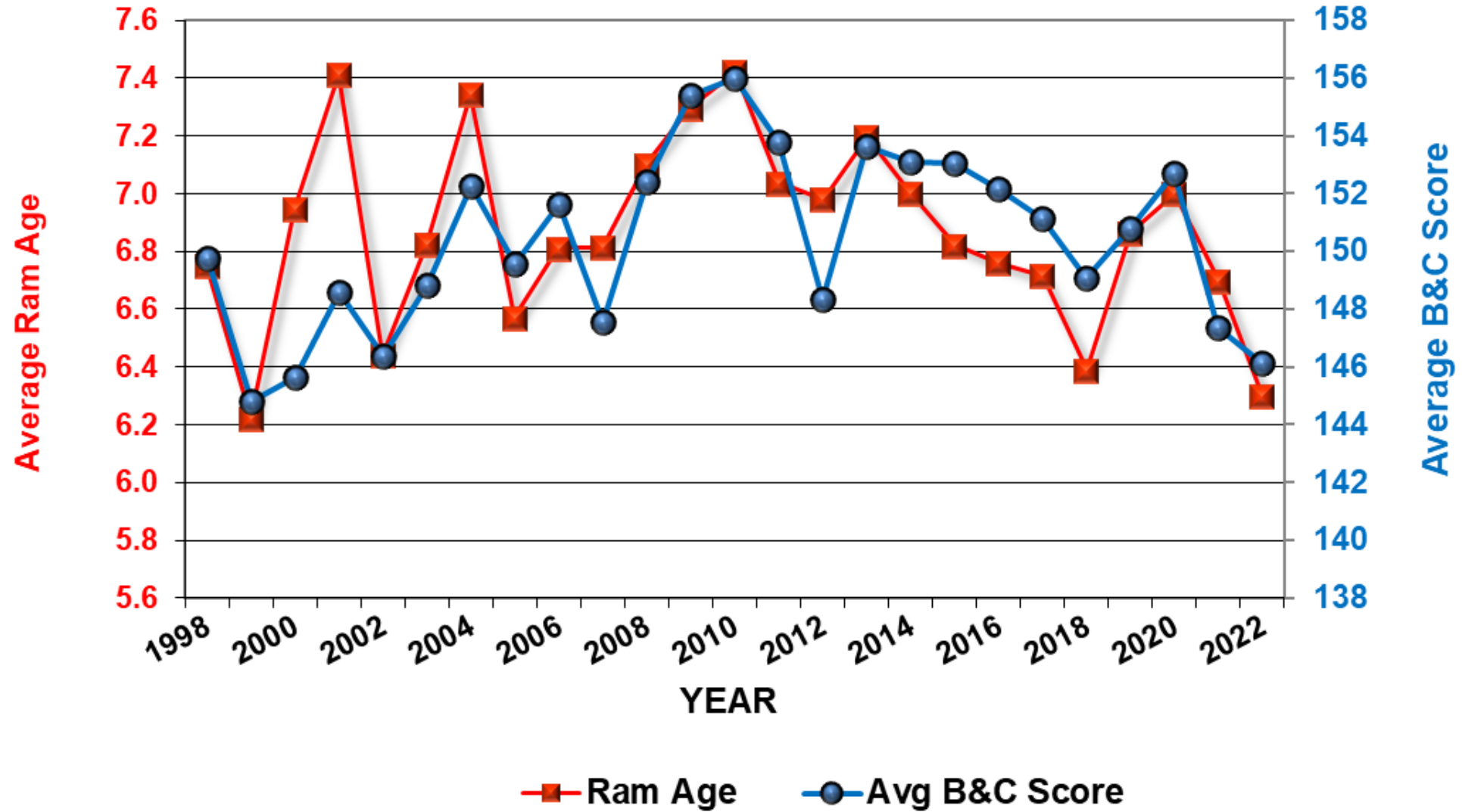




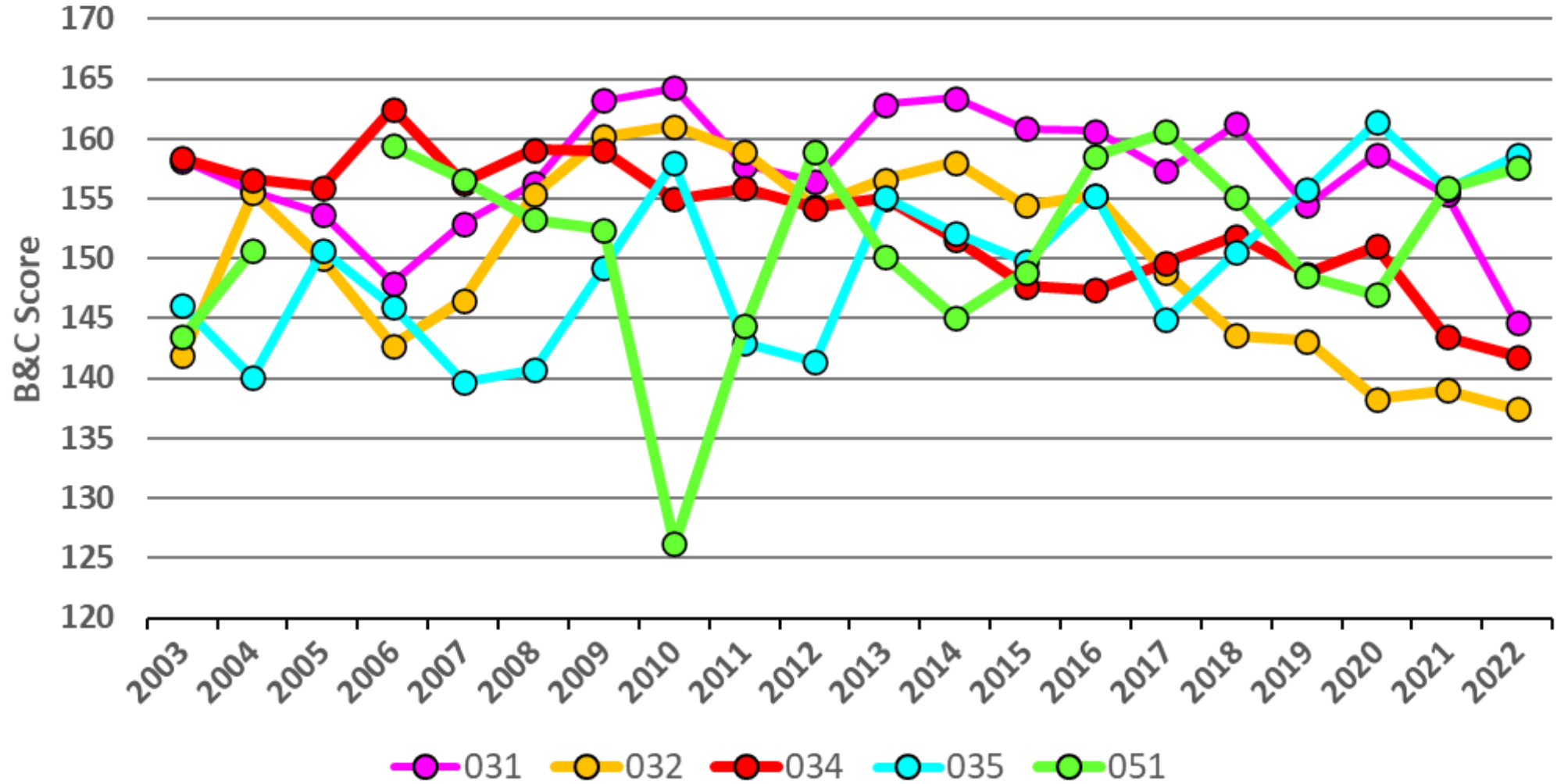


- Fairview Strain – 30% pop decline – pop doubled in 7 yrs to 600
- No sign of it until 2016 – yrlg ram PCR+ during surveillance testing
- Clan Alpine Mtns dieoff – 2018 – 40% loss; still not recovered
- Stillwater Range dieoff – 2019 – 30% loss; only partial recovery
- Gabbs Valley Range dieoff – 2019 – 50% loss; still depressed and depressing!!
- Tobin Range dieoff – 2020 – 60% loss; only 1 year high lamb mortality
- Monte Cristo Range dieoff – 2020 - 67% loss; still poor lamb recruitment
- Lone Mountain disease event – 2021 – 40% loss
- Total adult losses from these 7 disease events >1,500 and conservatively > 750 lambs that would have survived to 1 year

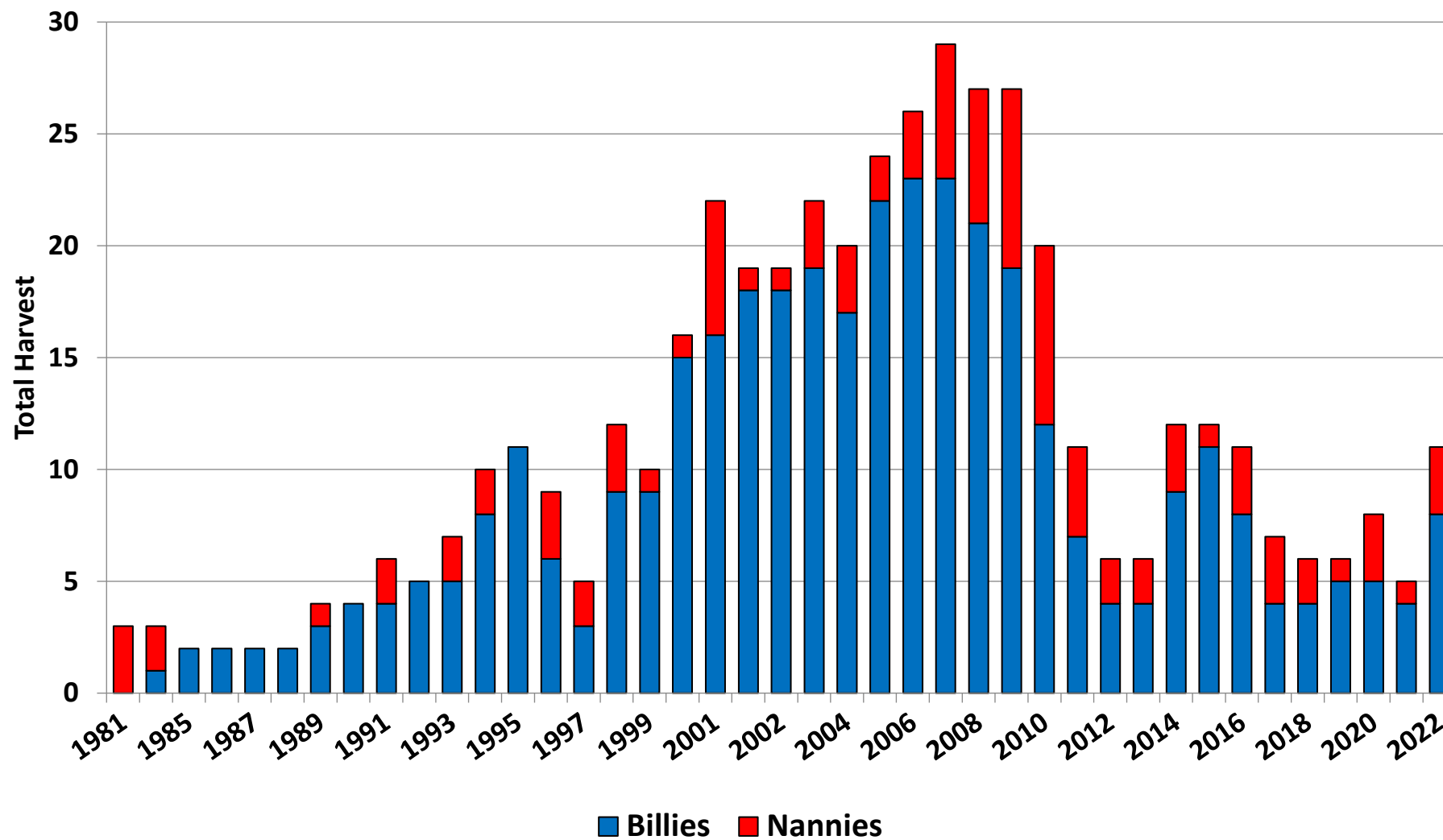
## California Bighorn Average Age & Score in Nevada 1998 - 2022



### Humboldt County CBS Unit Groups Average B&C Score 2003 - 2022



## Mountain Goat Harvest in Nevada by Sex, 1981 - 2022



**2023 Bighorn and Mountain Goat Quota  
Recommendations Compared to 2022**

<b>Hunt</b>	<b>2023</b>	<b>2022</b>	<b>% Change</b>
Desert Ram ALW	211	271	-22%
Desert Ewe	90	90	0%
Desert Archery	8	9	-11%
Desert One-Horn Ram	12	12	0%
Desert Management Ram	4	0	
California Ram	37	51	-27%
Rocky Mountain Ram	2	4	-50%
Mountain Goat*	13	14	-7%

\*An additional Mountain Goat Tag in 2023 will be awarded as Silver State Tag