

Mountain Lion Seasons and Harvest Limits

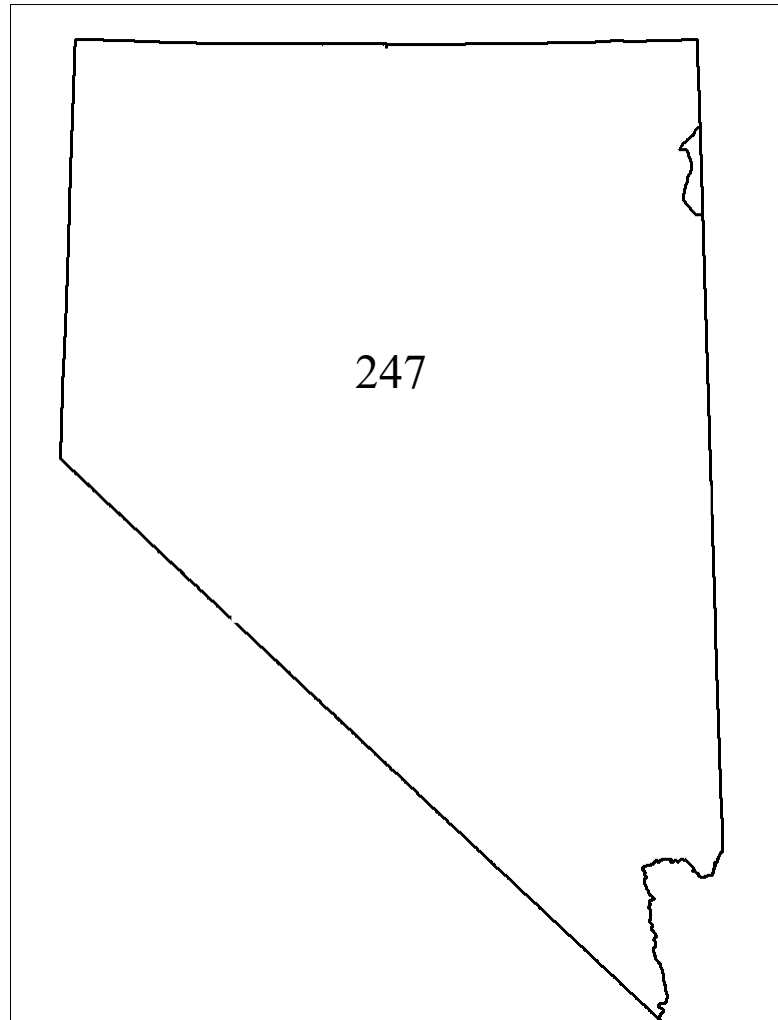
CR – 22-08

Mountain Lion Season and Harvest Limits

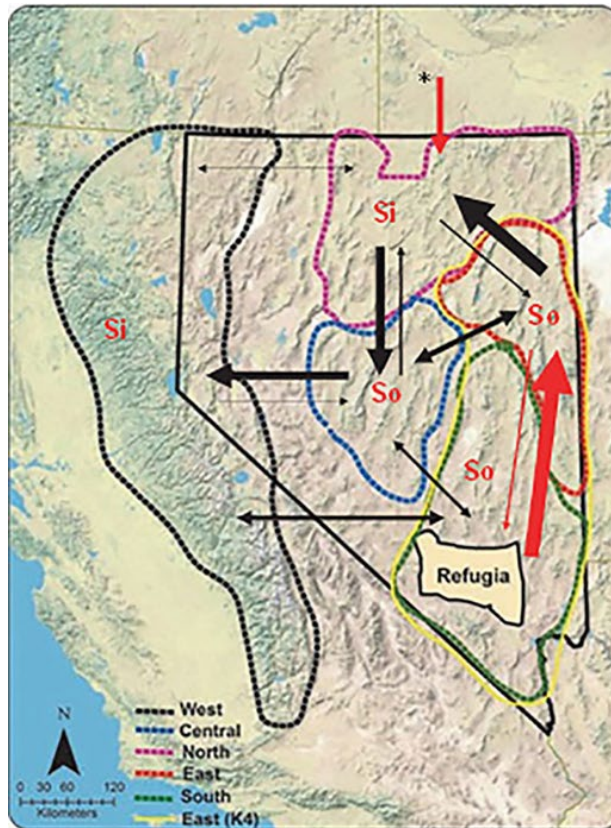
Recommendation

Statewide harvest
limit of 247
mountain lions

Maintain 091
interstate hunt
with Utah

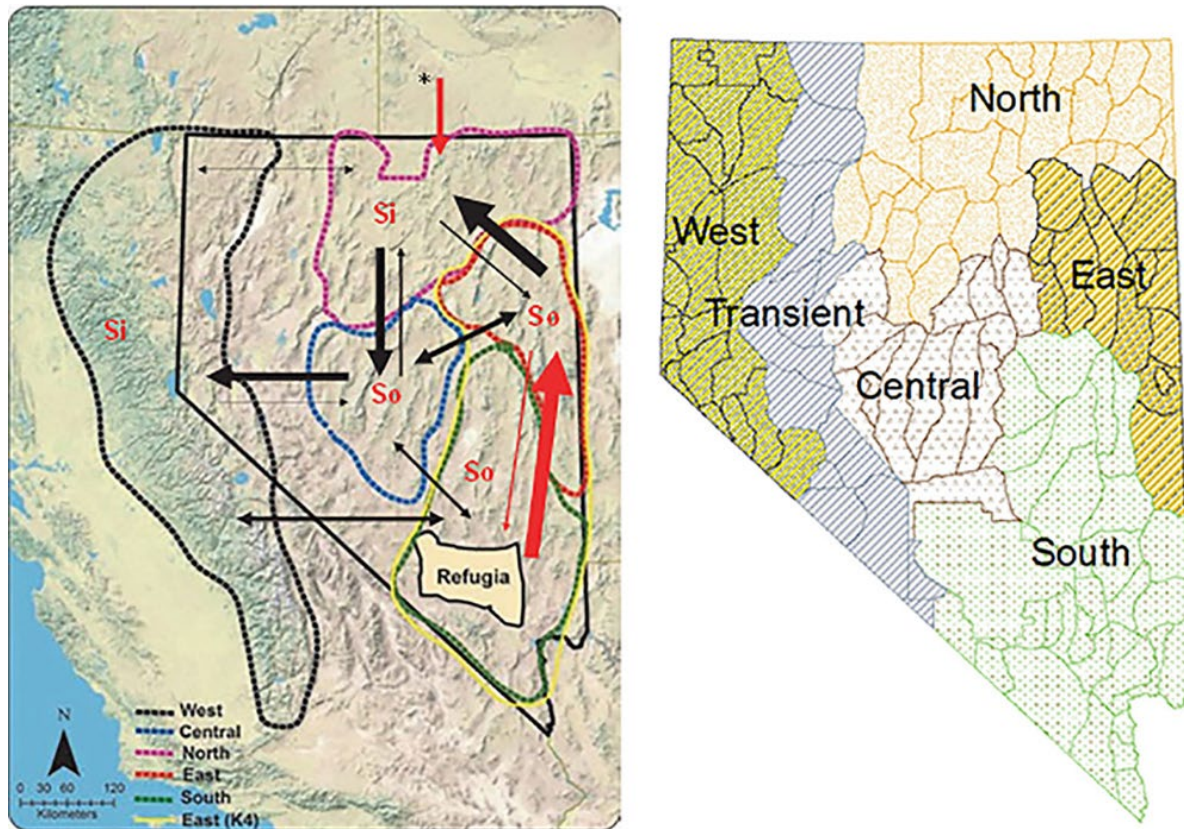


Mountain Lion Season and Harvest Limits



Andreasen et al. 2012

Mountain Lion Season and Harvest Limits



Andreasen et al. 2012

Mountain Lion Season and Harvest Limits

- Two thresholds to consider (on a 3-year average):
- Adult female harvest (35%)
- Overall female harvest (50%)

Mountain Lion Season and Harvest Limits

(3-year average)

	Overall Female Harvest	Adult Female Harvest
East	38%	30%
South	22%	22%
North	34%	27%
Central	36%	29%
West	48%	33%
Transient	37%	26%

Mountain Lion Season and Harvest Limits

Unit Groups	Harvest Limits
142,143, 144, 145, 155, 161, 162, 163, 171, 172, 173, 183, 184, 251	247
102, 103, 104, 105, 106, 108, 109, 111, 112, 113, 114, 115, 121, 231	
044, 045, 046, 051, 061, 062, 064, 065, 066, 067, 068, 071, 072, 073, 074, 075, 076, 077, 078, 079, 081, 091*, 101, 107, 141, 151, 152, 153, 154, 156	
011, 012, 013, 014, 015, 021, 022, 032, 034, 041, 192, 194, 195, 196, 201, 202, 203, 204, 206, 291	
131, 132, 133, 134, 164, 221, 222, 223, 241, 242, 243, 244, 245, 253, 254, 261, 262, 263, 264, 265, 266, 267, 268, 271, 272	
031, 035, 042, 043, 181, 182, 205, 207, 208, 211, 212, 213, 252	
033, 269, 280, 281, 282, 283, 284, 286	Closed Units

NAC 502.370

- Allows for two tags per year per qualified resident and non-resident
- Specifies the season will begin March 1 and end the last day in February

Mountain Lion Season and Harvest Limits

- The limit is one animal per tag, 2 tag maximum per person
- Hunting hours are any time day or night
- Hunter or guide must call 1-800 number to ensure season remains open

Questions?