

# Mountain Lion Seasons and Harvest Limits

CR – 23-06

# NAC 502.370

- Allows for two tags per year per qualified resident and non-resident
- Specifies the season will begin March 1 and end the last day in February

# NAC 502.370

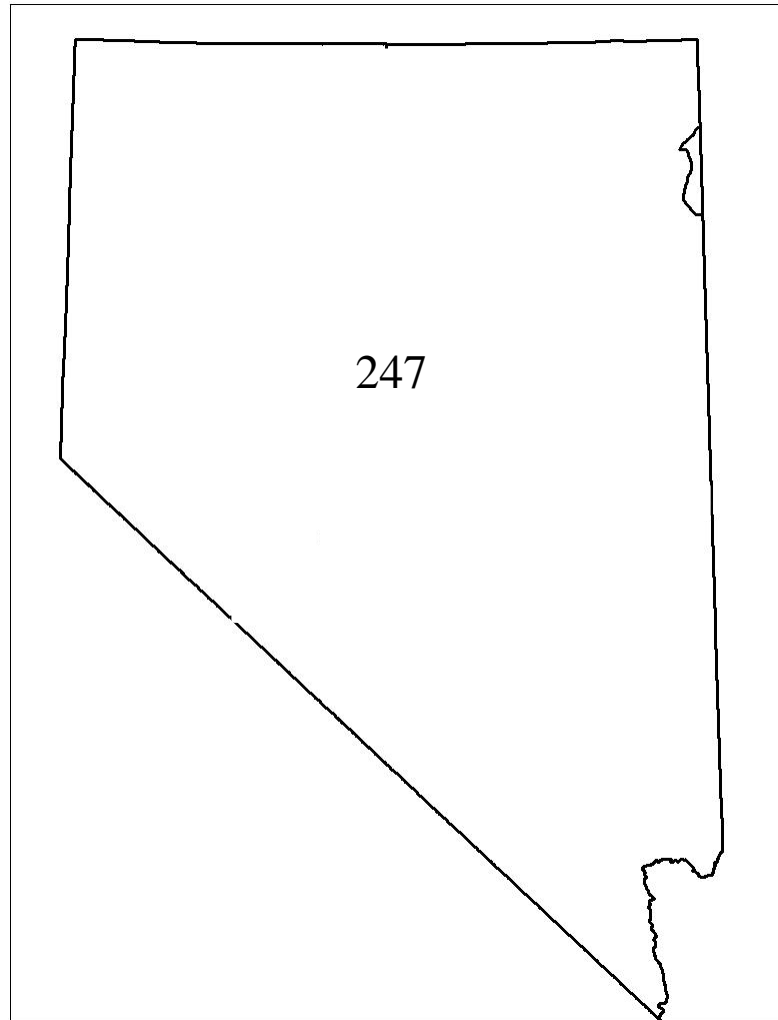
- The limit is one animal per tag, 2 tag maximum per person
- Hunting hours are any time day or night
- Hunter or guide must call 1-800 number to ensure season remains open

# Mountain Lion Season and Harvest Limits

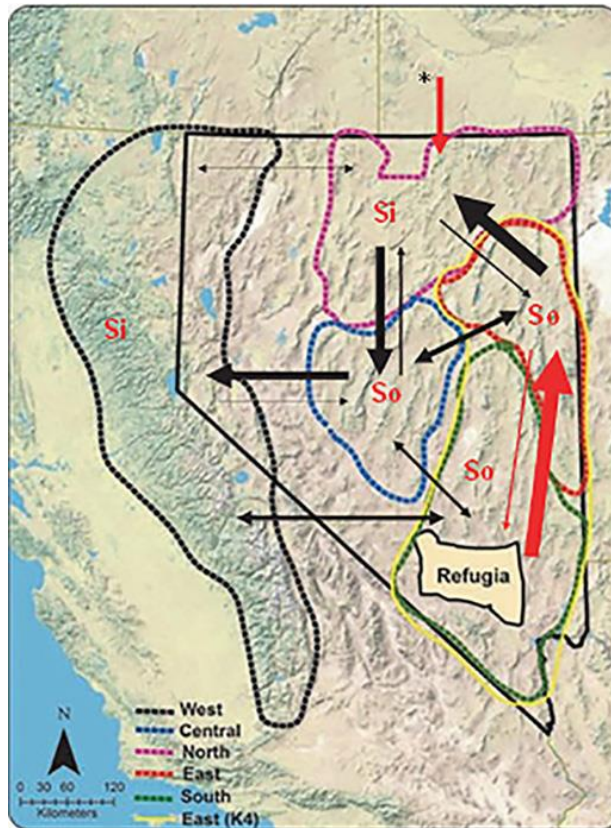
## Recommendation

Statewide harvest  
limit of 247  
mountain lions

Maintain 091  
interstate hunt  
with Utah

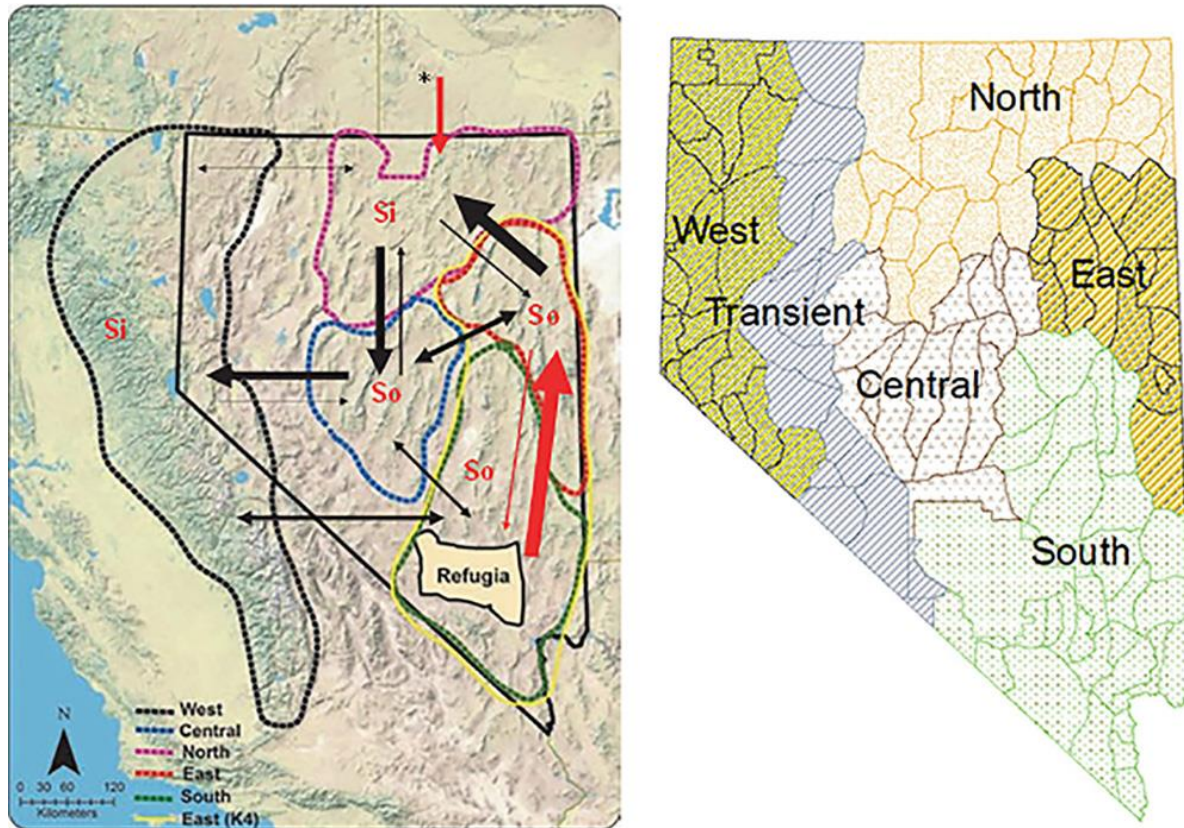


# Mountain Lion Season and Harvest Limits



Andreasen et al. 2012

# Mountain Lion Season and Harvest Limits



Andreasen et al. 2012

# Mountain Lion Season and Harvest Limits

- Two thresholds to consider (on a 3-year average):
- Adult female harvest (35%)
- Overall female harvest (50%)

# Mountain Lion Season and Harvest Limits

(3-year average)

	Overall Female Harvest	Adult Female Harvest
East	33%	26%
South	29%	27%
North	31%	26%
Central	37%	30%
West	49%	34%
Transient	47%	32%



# Mountain Lion Season and Harvest Limits

Unit Groups	Harvest Limits
142,143, 144, 145, 155, 161, 162, 163, 171, 172, 173, 183, 184, 251	247
102, 103, 104, 105, 106, 108, 109, 111, 112, 113, 114, 115, 121, 231	
044, 045, 046, 051, 061, 062, 064, 065, 066, 067, 068, 071, 072, 073, 074, 075, 076, 077, 078, 079, 081, 091*, 101, 107, 141, 151, 152, 153, 154, 156	
011, 012, 013, 014, 015, 021, 022, 032, 034, 041, 192, 194, 195, 196, 201, 202, 203, 204, 206, 291	
131, 132, 133, 134, 164, 221, 222, 223, 241, 242, 243, 244, 245, 253, 254, 261, 262, 263, 264, 265, 266, 267, 268, 271, 272	
031, 035, 042, 043, 181, 182, 205, 207, 208, 211, 212, 213, 252	
033, 269, 280, 281, 282, 283, 284, 286	Closed Units

Questions?