

CATNIP RESERVOIR



ANGLER AND FISH SURVEY INFORMATION

Brad Bauman- Fisheries Biologist, Winnemucca Field Office
705 E 4th Street. Winnemucca, NV 89445 (775)-623-6565 ext 105

General information: Catnip Reservoir is managed as a Quality Coldwater Fishery. This is a remote fishery that receives low angling pressure. Lahontan Cutthroat Trout (LCT) are the only fish present in the reservoir and are stocked annually. LCT range in size from 5 to over 22 inches. Road access is typically good but can be challenging if the roads are wet and muddy. 4-wheel drive vehicles are recommended, but not necessary.

Location: Washoe County, Sheldon National Wildlife Refuge, approximately 46 miles west of Denio Junction. Use our FishNV tool (<https://fish.wildlifenv.com/>) to find waters near you, and buy your fishing license at ndowlicensing.com. Access to Catnip Reservoir has 17 miles of gravel road off of SR 140.

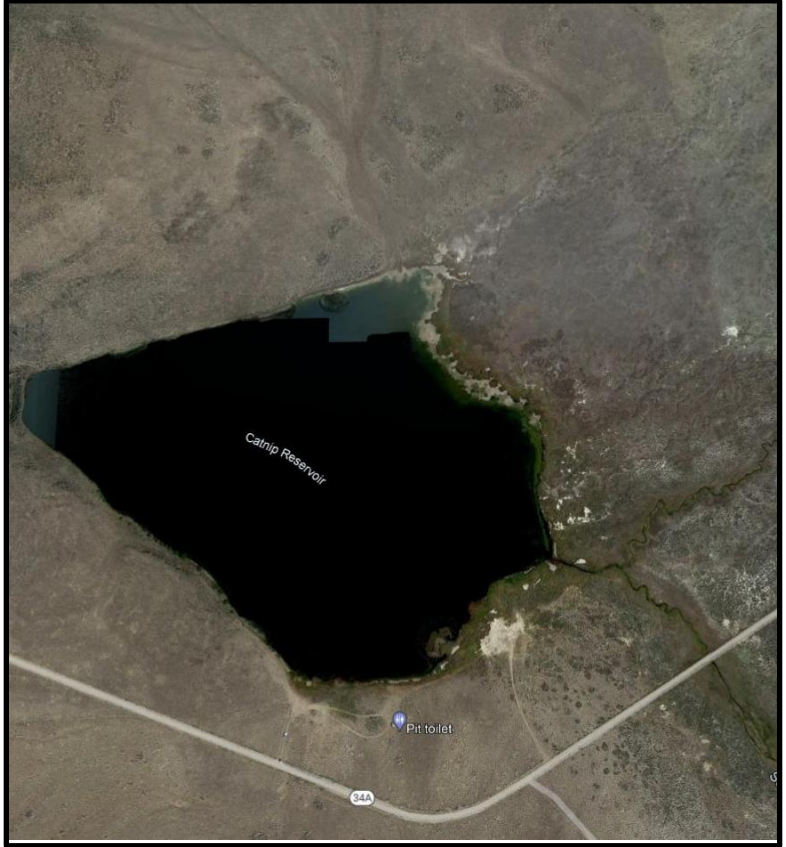
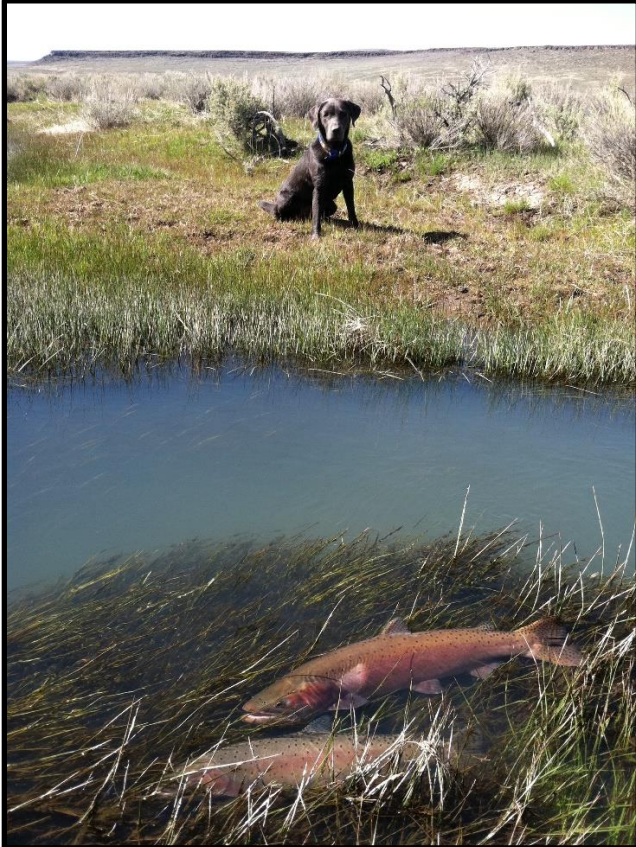
Size: 22 surface acres with a capacity of 220 acre-feet.

Management: Nevada Department of Wildlife manages the fishery as a Quality Cold Water Fishery. The United State Fish and Wildlife Service Sheldon National Wildlife Refuge manages the surrounding land. Please observe all rules and regulation of the Sheldon National Wildlife Refuge.

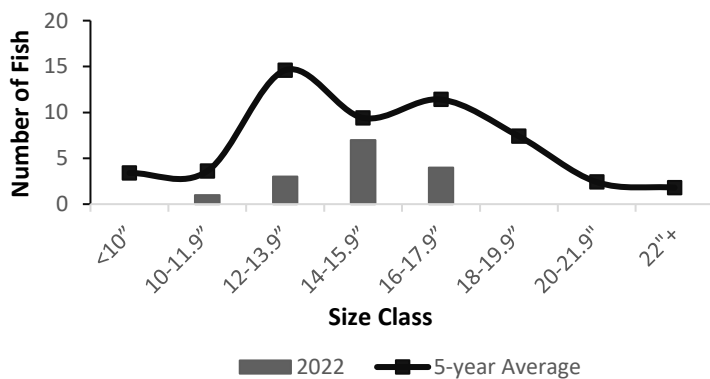
<u>General Info</u>	<u>Previous stocking</u>	<u>Fishing notes</u>
<ul style="list-style-type: none"> • Some developed camping with fires pits and tables • Restrooms • No boat ramps 	<p><u>2022</u></p> <p>LCT 5,145 6.2 inches</p> <p><u>2021</u></p> <p>No Stocking Occurred</p>	<ul style="list-style-type: none"> • Best fishing typically occurs in June, September, October. • Fly angling striping woolly buggers, leach patterns, scuds and bead head nymph patterns is usually successful.
<p><u>Fishing/Boating Regulations</u></p> <ul style="list-style-type: none"> • Season opens the second Saturday in June • Season Closes November 15 • Limit is 1 LCT • Artificial flies and lures only Single barbless hook • Vessels must be operated at speeds that leave a flat wake. Electric motors only. 	<p><u>2020</u></p> <p>LCT 2,171 5.9 inches</p> <p><u>2019</u></p> <p>LCT 7,880 3.9 inches</p> <p>LCT 1,154 7.0 inches</p> <p><u>2018</u></p> <p>LCT 1,004 7.0 inches</p>	<ul style="list-style-type: none"> • Midges or balanced leeches under indicators are also successful. • Small spinners such as Mepps and Rooster Tails. Castmaster and small spoons are lures that can be cast from shore or trolled from a small boat. • Float tubes, small pontoon boats or kayaks are well suited for this reservoir.

CATNIP RESERVOIR

FISHERY SURVEY DATA - 2022
 Brad Bauman – Fisheries Biologist
 Winnemucca Field Office



LCT Length Frequency



5-YEAR ANGLER CATCH RATES
 CATNIP RESERVOIR

	fish/hour	fish/angler
2022	0.94	2.50
2021	0.78	4.00
2020	0.65	4.29
2019	1.11	6.67
2018	0.94	2.45
Average	0.88	3.98

Biologist Forecast for 2023 - Snow pack conditions in March 2023 were well above normal for Northern Nevada. Catnip was stocked with over 5,000 Lahontan Cutthroat Trout in 2022. In 2022, angler catch rates were 2.50 fish per angler and 0.94 fish per hour with a few fish over 22" being reported. Most LCT caught in Catnip Reservoir were between 14-15.9 inches in 2022. Those fish are expected to be up to 18 inches in 2023. Fish should average between 14 and 18 inches with some fish over 20 inches. In 2023, fishing is expected to be fair with catch rates being around 1 fish per hour.