

## **NESBITT LAKE**

History - Key Pittman Wildlife Management Area and Nesbitt Lake were acquired in 1964. Key Pittman is located one mile north of Hiko. The primary management objective is for waterfowl with secondary concerns for the fishery.

Pertinent Information - Nesbitt Lake covers approximately 200 surface acres. The sport fishery consists of black bullhead catfish, largemouth bass, white crappie, and bluegill. There are fathead minnows that serve as a prey base for the bass. Fishing is best between February and June. Largemouth bass range in length between 8 and 10 inches with a maximum size usually near 13 inches. Most anglers used jigs, spinner baits, rubber worms and top water plugs. The black bullheads range in size between 10 and 12 inches. Black bullhead anglers use worms and some prepared catfish baits. Camping - There is **no** camping or fires allowed in the management area. Things to Consider: Bring your own drinking water as there is none available in the area. There is only one chemical toilet at the south end of the lake. Gate must remain closed after one enters the area.

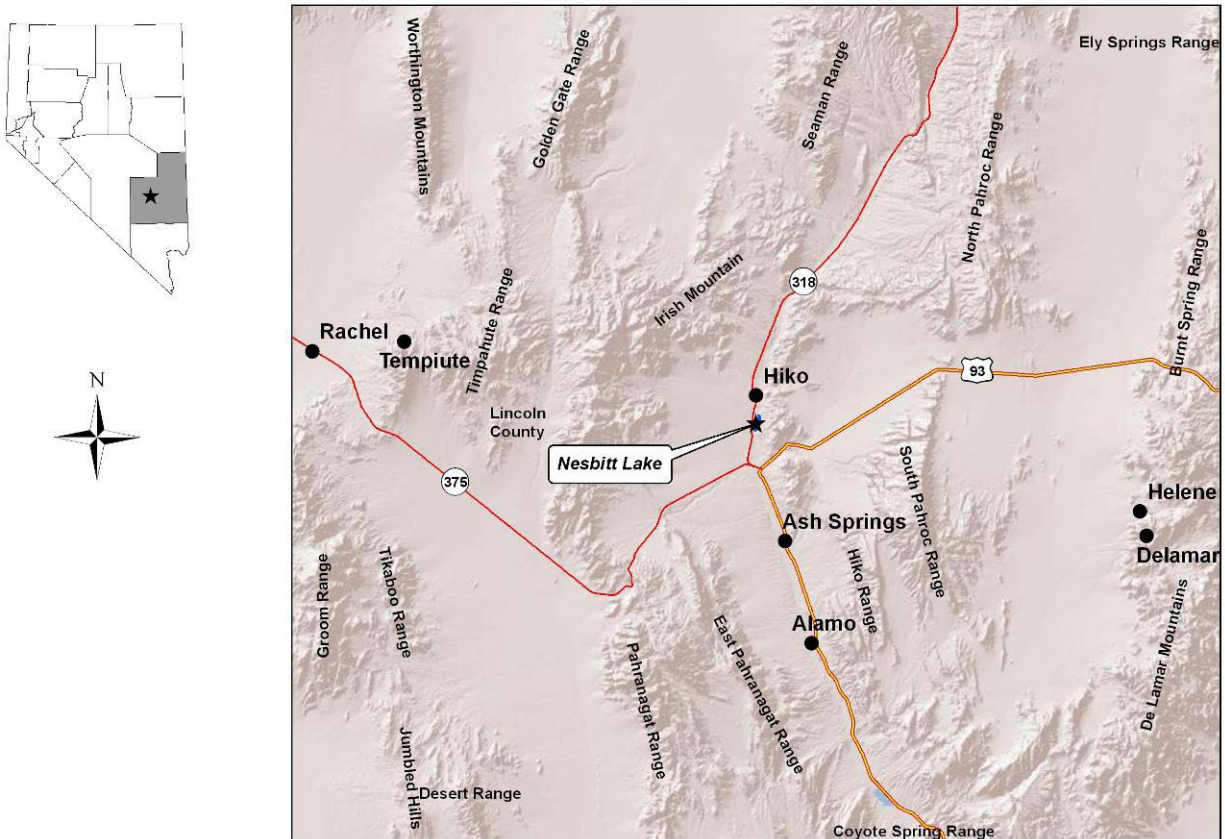
Stocking - The fishery is self-sustaining and no stocking is needed.

Regulations – The season is open year-round, any hour of the day or night except that portion above the old fence line as posted, which is closed to trespass from February 15 through August 15. The entire pond is closed to fishing during the waterfowl season. Limit is 50 bullhead and 15 other warmwater game fish of which no more than 10 may be largemouth bass. The capture, possession, or use of fish as bait, whether dead or alive or parts thereof, other than preserved salmon eggs, and commercially prepared and preserved baitfish is prohibited. Aquatic bait may be used only in the water from which it is taken.

Biologist Forecast for 2023 - Fishing should only be fair this year for largemouth bass, bluegill, and bullhead. Water levels are predicted to be below normal if current drought conditions persist. Aquatic weed growth increases in the summer, making shore fishing difficult. A boat or float tube remedies the problem.

Boating Regulations - A vessel must be operated at a speed that leaves a flat wake, but in no case may a vessel be operated at a speed in excess of 5 nautical miles per hour. All vessels and floating devices are prohibited during the waterfowl season.

Access - From Las Vegas, travel 21 miles east on I-15 to US 93, then north 83 miles to the junction with SR 318. Travel north on SR 318 for 5 miles to the south end of Key Pittman Wildlife Management Area. Nesbitt Lake is located just east of SR 318 and visible from the highway. Access the dirt road through a closed gate that must remain closed at all times. The reservoir is 1-mile north of the Hiko Post Office and 100 miles north of Las Vegas.



No warranty is made by the Nevada Department of Wildlife as to the accuracy, reliability, or completeness of these data for individual use or aggregate use with other data.

## **DO YOUR PART – Stop Aquatic Hitchhikers**

**Clean** – Remove all mud, plants, and animals from every part of your boat, trailer, and equipment (waders, boots, landing nets, gloves, etc.).

**Drain** – Before you leave the recreation area, eliminate all water from your equipment and boat including live-wells, ballast, hull, and engine-cooling water.

**Dry** – Allow time for your equipment (waders, boots, landing nets, gloves, etc.) and boat to dry completely before you enter or launch in any other waters.