

Subcommittee Members: Ambur Aten, Bert Ramos,  
Chris Jasmine, Jerry Annis, Marcial Evertsen,  
Rachelle Peppers, Ted McElvain

Department Representative: Sarah Hale  
Jeremy Lutz

**Nevada Board of Wildlife Commissioners  
Mule Deer Enhancement Oversight Committee  
Mule Deer Enhancement Program Subcommittee  
Lander County; Management Area 15  
Bureau of Land Management  
Mt. Lewis Field Office  
50 Bastian Rd.  
Battle Mountain, Nevada 89820**

**Wednesday, January 25, 2023 / 4:00 p.m.**

**Meeting also held via Zoom at [www.Zoom.us](http://www.Zoom.us)**

**DRAFT Minutes**

**1. Call to Order – Department Representative**

Meeting called to order at 4:10pm.

In attendance:

Ambur Aten, Subcommittee Member  
Chris Jasmine, Subcommittee Member  
Jerry Annis, Subcommittee Member  
Marcial Evertsen, Subcommittee Member  
Rachelle Peppers, Subcommittee Member  
Sarah Hale, Department Representative

**2. Approval of Agenda – For Possible Action**

Subcommittee member Aten moved to approve the agenda.

Subcommittee member Annis seconded the motion.

The motion passed.

**3. Approval of Minutes (August 4, 2022) – Department Representative – For Possible Action**

Subcommittee member Annis moved to approve the August 4, 2022 Minutes.

Subcommittee member Aten seconded the motion.

The motion passed.

**4. Member Announcements and Correspondence – Informational**

New Subcommittee member, Damon Spring, announced. Subcommittee member Ted McElvain stepped down. Changes to Subcommittee will be reflected at the next meeting. Attempted to hold meeting on September 22, 2022, but there was not a quorum so no action was taken. Department representative Sarah Hale sent out pictures of completed spring exclosure to the team in October 2022.

**5. Area 15 Project Proposals – For Possible Action**

The Subcommittee discussed the completed spring exclosure project, and the projects that were approved to move forward for FY24. The Subcommittee discussed and edited its DRAFT 5-year plan.

Subcommittee member Jasmine moved to adopt the edited document as the Subcommittee's 5-year plan (working draft).

**Subcommittee member Annis seconded the motion.**

**The motion passed.**

**6. Public Comment Period**

Jerry Annis asked if our MDEP team would like to have a representative on a team that the Lander County Commission was proposing to address feral horses in Lander County.

**7. Future Subcommittee Meetings – Department Representative – For possible Action**

No action was taken.

The meeting was adjourned at 5:35pm.

## **Five-Year Plan for Area 15 Mule Deer Enhancement Program Team – Living document to be updated yearly or when deemed necessary**

### Riparian Resource Protection/Restoration

- Spring Enclosures (welded drill-stem)
  - Strawberry Summit (Dry Creek Spring 2) spring enclosure– replace 275 linear feet of jack-rail fencing with welded drill stem to exclude feral horses and cattle
  - Elephant Head aspen enclosure restoration – replace several degraded/non-functioning enclosures around important aspen/riparian areas to exclude horses, enhance riparian resources for wildlife, and restore natural firebreaks.
  - Bald Mountain springs – install enclosures around up to 12 springs
- Grade Stabilization Structures
  - Beaver Dam Analogs- artificial beaver dams constructed out of natural materials that mimic the structure and function of actual beaver dams (e.g. water sequestration, filtration, etc.)
    - Several areas in mind in which to implement these both on public and private land (Fish Creek,
- Battle Mountains
  - Wildhorse Basin enclosure repair
  - Spring and pipe below summit of Cottonwood Canyon – could we do something with this?
- Carico Lake Valley Allotment enclosure repairs (5-6 that were installed through bootstraps program but may need review and repair)
  - 2023 field trip to repair what we can

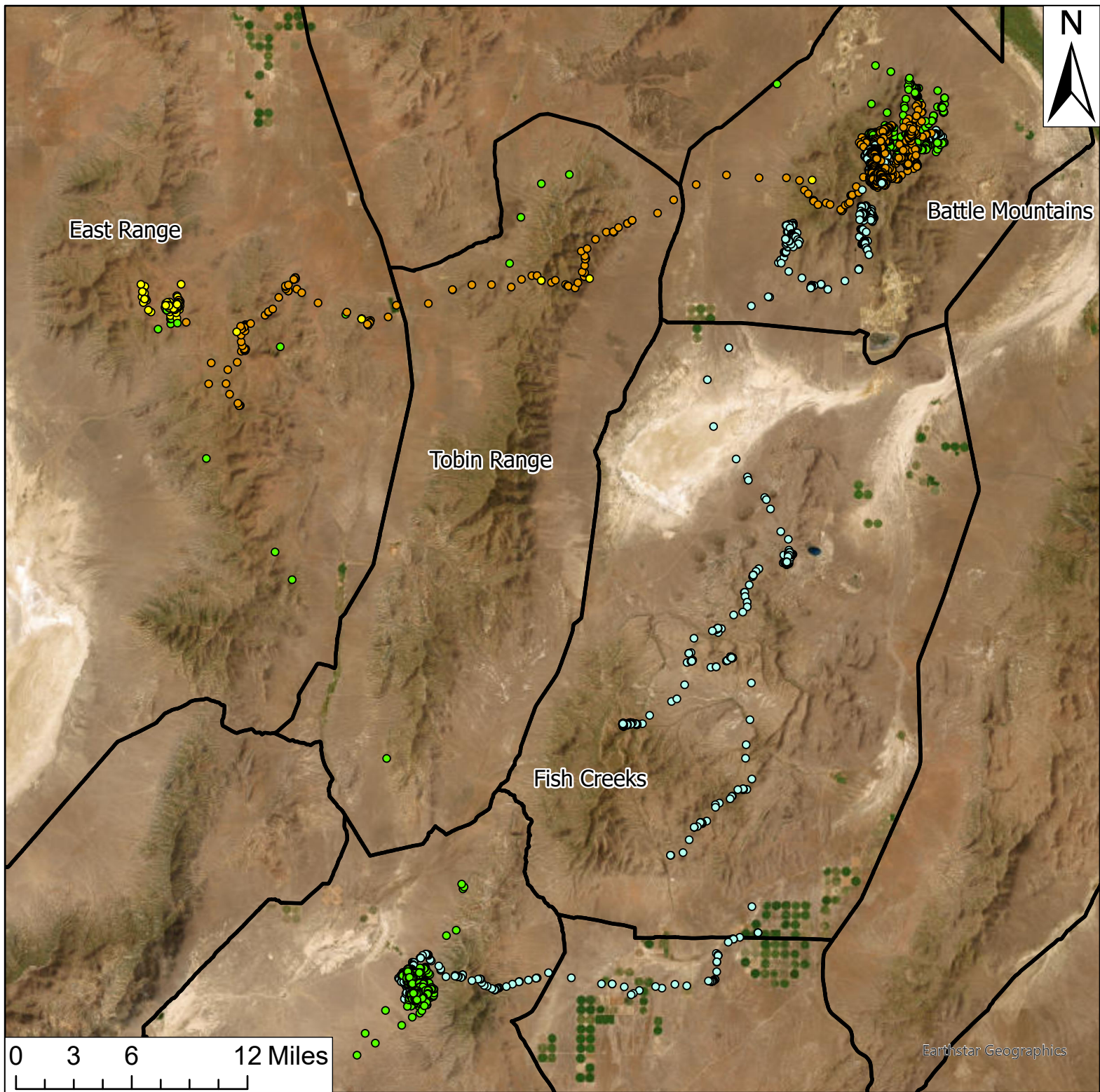
### Ecosystem Restoration/Protection

- PJ thinning on Bald Mountain (N Toiyabes) – thin up to 11,000 acres on BLM land in crucial winter mule deer range. Will add on to Toiyabe Fingers project. Implement incrementally over several years.
- Fire Creek herbicide treatment and reseedling – spray up to 26,000 acres of cheatgrass with imazapic and re-seed with BLM/NDOW approved seed mix. Implement incrementally over several years.
- Battle Mountain brush-beating (if needed) – Disturb up to 1000 acres of sagebrush community in 5-20 acre sections to stimulate leader growth in shrubs and allow younger shrubs to establish. Will provide better quality forage for mule deer and other wildlife.
- Mt. Moses – protection of important resources from feral horses. May involve removal of old fencing and restriction of horses from important high-elevation mule deer habitat.
- Moss Creek Bench
  - Use as illustration of horse problem and the hurdles to conservation it creates
  - When possible: restoration (post-horse gather) – large-scale restoration of severely degraded range and riparian resources along west side of Shoshone Range from Harry Canyon to ‘The Narrows’. Will at the very least involve herbicide application and re-seeding.

- Ravenswood – look into whether PJ thinning would be feasible to restore mule deer habitat.
- Simpson Park Range – keep this area intact
- Area-wide – work with BLM to protect horse-free areas & keep horses from colonizing/overusing these areas (biggest issue in Area)

#### Potential Investigations

- Battle Mountain deer collaring – collar 15 mule deer to evaluate movements, response to brush treatments, to help pinpoint where future brush-beating treatments might be most beneficial, and to determine what other factors are limiting deer in this range.
- Forage quality analysis – analyze nutrient content of browse and scat samples from different mountain ranges to determine if forage quality varies among ranges. May explain why deer do not use certain ranges that contain high quantities of forage and will direct management actions.
- Comparisons of # of mountain lions taken from hunt units before and after horse gathers; determine if correlations between horse numbers and mountain lion numbers
- Monitor fawn ratios and investigate potential causes of mortality when ratios low
- Collect predator (mountain lion and coyote) scat samples to determine prey composition via hair analysis; could help determine where lions are consuming horses
- Horse grazing exclosures in Gilbert Creek (land that Lander County acquired)



## Mule Deer Doe Locations

### Season

- Fall
- Spring
- Summer
- Winter

□ Hunt Unit Boundaries

## MULD Doe 31158: February 2012 - March 2014



01/20/2023

Projection: UTM Zone 11 North, NAD83  
No warranty is made by the Nevada Department of Wildlife as to the accuracy, reliability, or completeness of the data for individual use or aggregate use with other data.



2022 MDEP Project Proposals

Mule Deer Investigation Projects

Project Name	Project Type	Project Description	Subcommittee	Unit Group	Amount Requested?	Score	Regional Priority	Statewide Priority	Comments
Mgt. Area 1 Mule Deer Collaring	Capture	Mortality/Habitat Use Invest.	Washoe	011-015	\$0	74.8	WR1	6	NGO's and NDOW budget will be used for this project
Area 8 Tooth Collection & Age Analysis	Harvest Study	Tooth Age Analysis	Elko Area 7, 8, 9	081	\$3,000	32.6	ER5	5	Elko NBU commitment
Mgt. Area 12 Mule Deer Collaring	Capture	Mortality/Habitat Use Invest.	White Pine	MA 12	\$96,000	74.3	ER1	2	
Mgt. Area 13 Mule Deer Collaring	Capture	Mortality/Habitat Use Invest.	Area 13	MA 13	\$100,000	65	ER2	3	Modified \$\$ amount from original proposal
Mgt. Area 22 Mule Deer Collaring	Capture	Mortality/Habitat Use Invest.	Lincoln	221-223	\$78,080	65	SR2	1	(Modified) \$80K donations from NGO's committed.
Spring Mtn Camera Project	Investigation	Trail Camera Study	Clark	MA 26, 27, & 28	\$8,000	69	SR1	4	
					\$285,080	Requested from NDOW P/R funds for FY 2024			

Habitat Projects

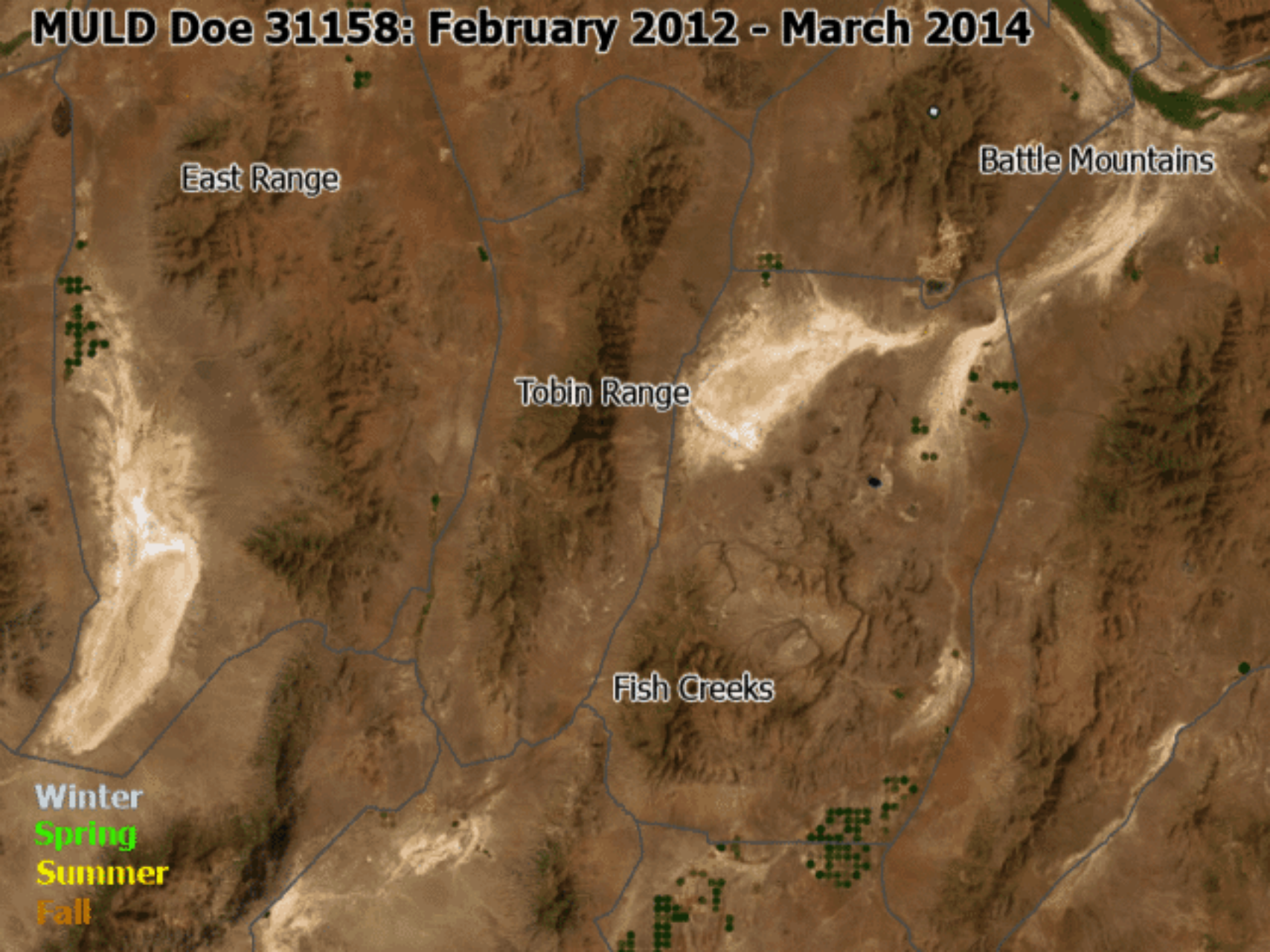
Project Name	Project Type	Project Description	Subcommittee	Unit Group	Amount Requested?	Score	Regional Priority	Statewide Priority	Potential Fund Source
Wildcat Fire Bitterbrush Planting	Restoration/Rehab.	Planting	Elko Area 7, 8, 9	071-079, 091	\$117,000	85.4	ER1	1	Heritage, NDOW Fire Rehab funds, FS, SO3362, NGO
Corta Fire Seedling Planting Phase II	Restoration/Rehab.	Planting	Elko Area 10	102-103	\$75,000	74.4	ER2	2	Heritage, W-24 Restoration Grant?
Izzenhood WMA Winter Range Habitat Restoration	Restoration/Rehab.	Herbicide and Planting	Elko Area 6	068	\$125,000	66	ER3	3	Heritage, WSFR Grant?
Granite Range Overspray Projects	Restoration/Rehab.	Herbicide and Seeding	Washoe	014	\$200,000	67.4	WR1	4	Heritage, W-24 Restoration Grant?, BLM AA?
Spring Protection	Water Dev./Spring Protection	Spring Protection	Nye-Esmeralda	MA 17, 21	N/A	66	SR1	5	Heritage, Water Dev. Grant, BLMAA?
Current to Upper Perish Habitat Enhancement:	Restoration/Rehab.	PJ Removal	Area 13	MA 13	\$250,000	70.3	ER4	6	Heritage, BLM AA?
Bald Mtn Pinyon-Juniper Thinning	Restoration/Rehab.	PJ Removal	Lander	151-156	\$425,000	66.3	ER5	7	Heritage, BLM AA?
Spring Restoration in Clark County	Water Dev./Spring Protection	Spring Protection	Clark	MA 26, 27, & 28	\$100,000	72	SR2	8	Heritage, Water Dev. Grant, BLMAA?
Granite Range Water Dev.s	Water Dev./Spring Protection	Guzzler	Washoe	014	\$43,000	68.8	WR2	9	Water Dev. Grant, volunteers
Milk Ranch Guzzler	Water Dev./Spring Protection	Guzzler	Lincoln	222	\$45,000	69	SR3	10	Heritage, Water Dev. Grant, BLMAA?
Fire Creek Cheatgrass Treatment	Restoration/Rehab.	Herbicide and seeding	Lander	151-156	\$390,000	54.3	ER6	11	Heritage, W-24 Restoration Grant??. BLM AA?
Vinini and Henderson Creek PJ Removal	Restoration/Rehab.	PJ Removal	Area 14	MA 14	\$150,000	69	ER7	12	Heritage, Eureka CD, NRCS, BLM AA?
Private Land Snowstorm and Imm. Kochia Seeding	Restoration/Rehab.	Seeding	Elko Area 6	065	\$71,000	63.8	ER8	13	Heritage
Robert's Creek Corridor Pinyon-Juniper Removal	Restoration/Rehab.	PJ Removal	Area 14	MA 14	\$150,000	71	ER9	14	Heritage, Eureka CD, NRCS, BLM AA?
Area 7 Fence Removal in Migration Corridor	Fence	Fence Removal	Elko Area 7, 8, 9	071-079, 091	\$25,000	66.1	ER10	15	RMEF Volunteers
Toe Jam Mule Deer Corridor Fence Modification	Fence	Fence Modification	Elko Area 6	067	\$144,500	66.4	ER11	16	Heritage
Queen Spring Pinyon-Juniper Hand Thinning	Restoration/Rehab.	PJ Removal	White Pine	111-113	\$130,000	64.6	ER12	17	Heritage
East Whistler Mtn Pinyon-Juniper Removal	Restoration/Rehab.	PJ Removal/Spring Enhancment	Area 14	MA 14	\$80,000	71	ER13	18	Heritage, Eureka CD, NRCS, BLM AA?
Elephant Head Aspen Exclosure Repair	Fence Or Spring Protection?	Spring Protection	Lander	151-156	\$231,250	52	ER14	19	Heritage, BLM AA?
Northern Golden Gate Range Guzzler Series	Water Dev./Spring Protection	Guzzler	Area 13	MA 13	\$120,000	64.8	ER15	20	Water Dev. Grant, volunteers
Spring Mtns Mullein Removal	Restoration/Rehab.	Invasive Species Removal	Clark	MA 26, 27, & 28	\$25,000	48	SR4	21	Heritage, HCF, BLMAA?
Little Fish Lake Valley Pinyon-Juniper Treatment	Restoration/Rehab.	PJ Removal	Nye-Esmeralda	162-163	\$150,000	65.4	SR5	22	Heritage, BLM AA?

\$3,046,750  
\$2,126,750

40% line



# MULD Doe 31158: February 2012 - March 2014



Habitat Investigation Projects on Hold

Project Name	Project Type	Project Description	Subcommittee	Unit Group	Fiscal Year 2023 Amount Requested?	Score	Regional Priority	Statewide Priority	Potential Fund Source
Wild Horse Impacts on Mule Deer	Investigation		White Pine	MA 11 / 12	N/A	78.9	ER 4		
Triple B HMA Remote Sensing	Investigation		Elko Area 10	101-109	\$191,000	69.4	ER 3		BLM WH&B Proposal?

Predator Projects

					Fiscal Year 2023 Amount Requested?	Score		Statewide Priority	Potential Fund Source
Project Name	Project Type	Project Description	Subcommittee	Unit Group					
Coyote Removal During Fawning Period	Project 38	Coyote Removal	Pershing	043-046	\$40,000	N/A	WR 3		\$3 Predator Fee
Antelope Range Mtn Lion Removal	Project 37	Lion Removal	White Pine	111-113	\$40,000	N/A	ER		\$3 Predator Fee
Cherry Creek Range Mtn Lion Removal	Project 37	Lion Removal	White Pine	121	\$40,000	N/A	ER		\$3 Predator Fee
Fawning Ground Coyote Removal	Project 38	Coyote Removal	Lincoln	231	\$40,000	N/A	SR		\$3 Predator Fee
					\$120,000	Estimated Funding Available: \$120,000			

(Pulled from Consideration in 2022)

081	Crucial Winter Range Bitterbrush Planting		Elko Area 7-8-9	081	\$26,000	78.4
-----	---	--	-----------------	-----	----------	------



## **Mule Deer Enhancement Program - Proposed Yearly Schedule**

<b>Jan 1 – March 31:</b>	Annual subcommittee meeting will be held to provide update and presentation.
<b>January 31:</b>	Heritage project proposals due for NDOW staff.
<b>February 15:</b>	Federal Aid project proposals due to Game Division Staff.
<b>March 1:</b>	Deadline for Predator-related projects to be submitted to Predator Staff Biologist.
<b>April 15 – June 15:</b>	Annual field trip to discuss projects, conditions, etc.
<b>June 15 – July 31:</b>	Meeting to rank Limiting Factors, complete Needs Assessments and Project Proposal forms.
<b>August 1:</b>	Submit up to three (3) project proposals to Supervising Game Biologists.
<b>Aug 1 – Aug 31:</b>	Mule Deer Oversight Committee Meeting to score projects using the Project matrices and provide a prioritized project list to NDOW staff.
<b>Sept 1 – Dec 31:</b>	At least one additional subcommittee meeting will be scheduled during this time.