

Subcommittee Members: Agee Smith, Chris Jasmine,
Joel McConnell, Todd Compston, Val Nance,
Wyatt Mesna

Department Representative: Kari Huebner
Brittany Trimble

**Nevada Board of Wildlife Commissioners
Mule Deer Enhancement Oversight Committee
Mule Deer Enhancement Program Subcommittee
Elko County; Management Area 7, 8, 9
Nevada Department of Wildlife
60 Youth Center Road
Elko, Nevada 89801**

Thursday, March 23, 2023 / 5:30 p.m.

Meeting in person and via [www.Zoom.us](https://www.zoom.us)

DRAFT Minutes

1. Call to Order – Department Representative

The meeting was called to order at 5:40pm

Attendees:

Agee Smith, Subcommittee Member
Wyatt Mesma, Subcommittee Member
Val Nance, Subcommittee Member
Todd Compston, Subcommittee Member
Chris Jasmine, Subcommittee Member
Cam Collins, Non-Voting Member
Tyson Gripp, Non-Voting Member
Joel McConnell, Non-Voting Member
Brittany Trimble, Department Representative
Kari Huebner, Department Representative
Tom Donham, Department Representative

2. Approval of Agenda – For Possible Action

Subcommittee member Jasmine moved to approve the agenda.

Subcommittee member Nance seconded the motion.

The motion passed.

3. Approval of Minutes (August 16, 2022) – Department Representative – For Possible Action

Subcommittee Member Nance moved to approve the Minutes with the following corrections: correct the spelling of Member Jasmine's name and mark Tyson Gripp as present.

Subcommittee Jasmine seconded the motion.

The motion passed.

4. Member Announcements and Correspondence – Informational

Subcommittee Member Joel McConnell will no longer be a voting member. Subcommittee Member Wyatt Mesma will be a voting member.

5. ***Area 7, 8, 9 Mule Deer Herd Status and Project Update – Department Representative – For Possible Action**

The Subcommittee was given a presentation of the herd status of the mule deer herds in Management Areas 7, 8, and 9.

6. **Public Comment**

No public comment was received.

7. **Future Subcommittee Meetings and Field Trip – For possible Action**

The Subcommittee decided to see how the weather and snowmelt proceed before setting a date for the field trip, however the members did decide to focus in Unit 081 this year. There will be a doodle poll follow-up.

Meeting was adjourned at 7:39 pm

Survey

Fall 2022 – Camera Trap Survey

- 4,061 deer
- 32 bucks/100 does
- 63 fawns/100 does

Spring 2023 – Direct Search

- 4,321 deer
- 31 fawns/100 adults

Highway 93 Camera Census 2022-2023

- HD Overpass – 1,149
- South HD Overpass – 1,042
- Mid Fence Underpass – 83
- North 10-mile Underpass – 26
- 10-mile Overpass – 4,061
- South 10-mile Overpass – 0

Total Highway 93 Fall Migration Crossings - 6,341 Deer

* Also 14 elk, 2 snow machiners, many coyotes, black-tailed jackrabbits and a badger

Collars

2022-12-16 01:35:33 PM

25°F



M 1/5

- **39 Active Collars**

- 1 Bruneau
- 20 Pequop/S Toanos
- 6 North Toanos
- 4 Murdock Mtn
- 7 Contact/Granites
- 1 Wood Hills

- **15 Mortalities in the past year**

- 9 Likely Mtn Lion
- 1 Hunter Harvest
- 1 Potentially Slipped Collar
- 4 Unknown
- 8 Collars Dropped Off

20 Cactus Bucks in 2022

39°F ● M 1/5 ⚡

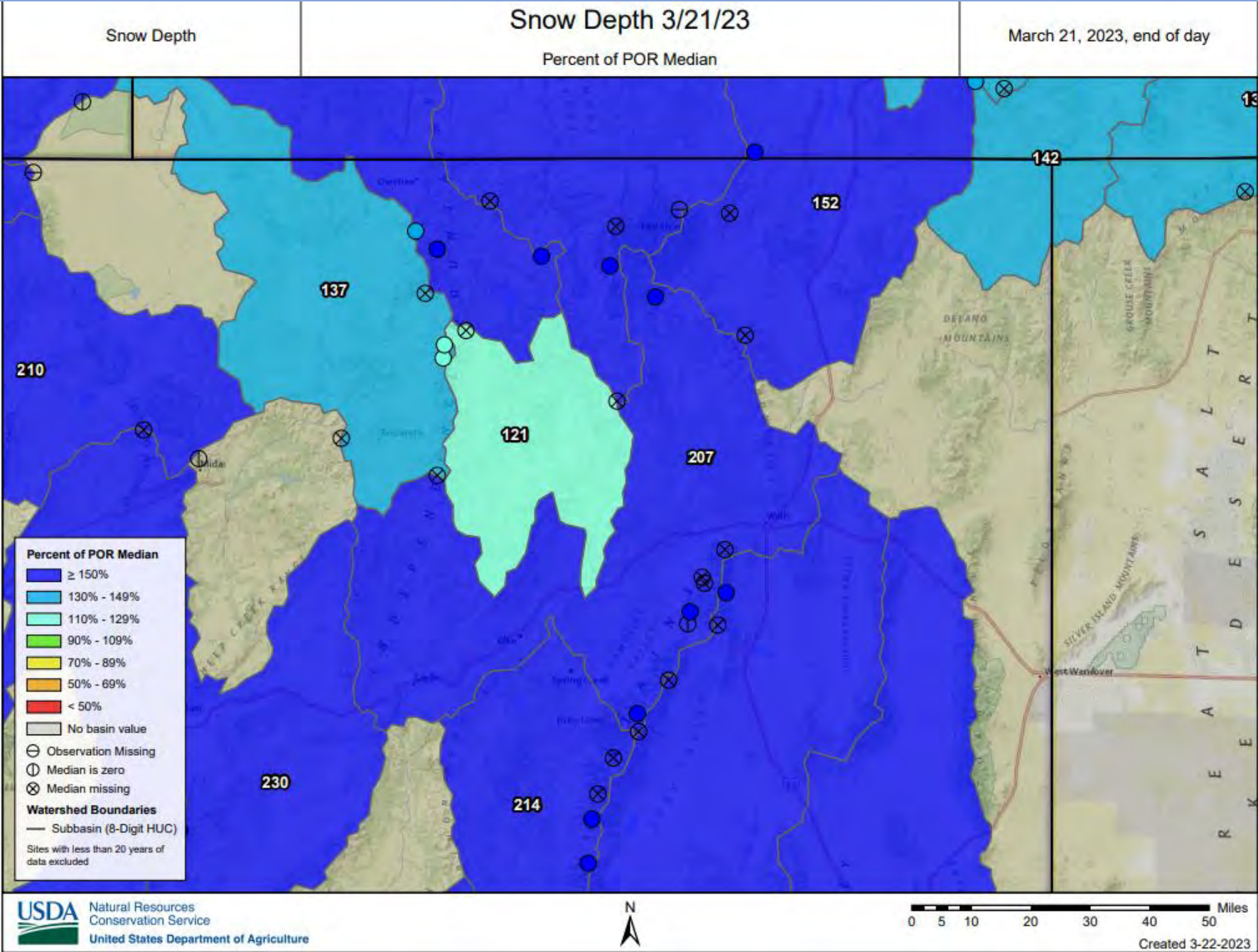


2022-11-05 08:47:15 AM 41°F ● M 5/5



ULTRAFIRE XR6

RECONYX
Wild Game Trail Camera



Project Proposal Current Status

- Investigations

- Area 8 Tooth Analysis – 8 teeth were submitted from 2022 season – collection will continue for 2023 hunting season
- Area 8 Collaring Project – 20 deer were collared February 2023

- Habitat

- Area 8 Goose Creek Bitterbrush Seeding – Implement Spring 2023 – 270 acres
- Area 7 Murdock Mtn Conifer Removal - Implement Summer/Fall 2023
- Area 7 Meadow Creek Fuel Break - Oneil Basin PPA EA – Summer 2023
- Area 7 Wildcat Fire Bitterbrush Planting – Heritage and RMEF Proposal
- Area 7 Fence Removal in Migration Corridor – On Hold



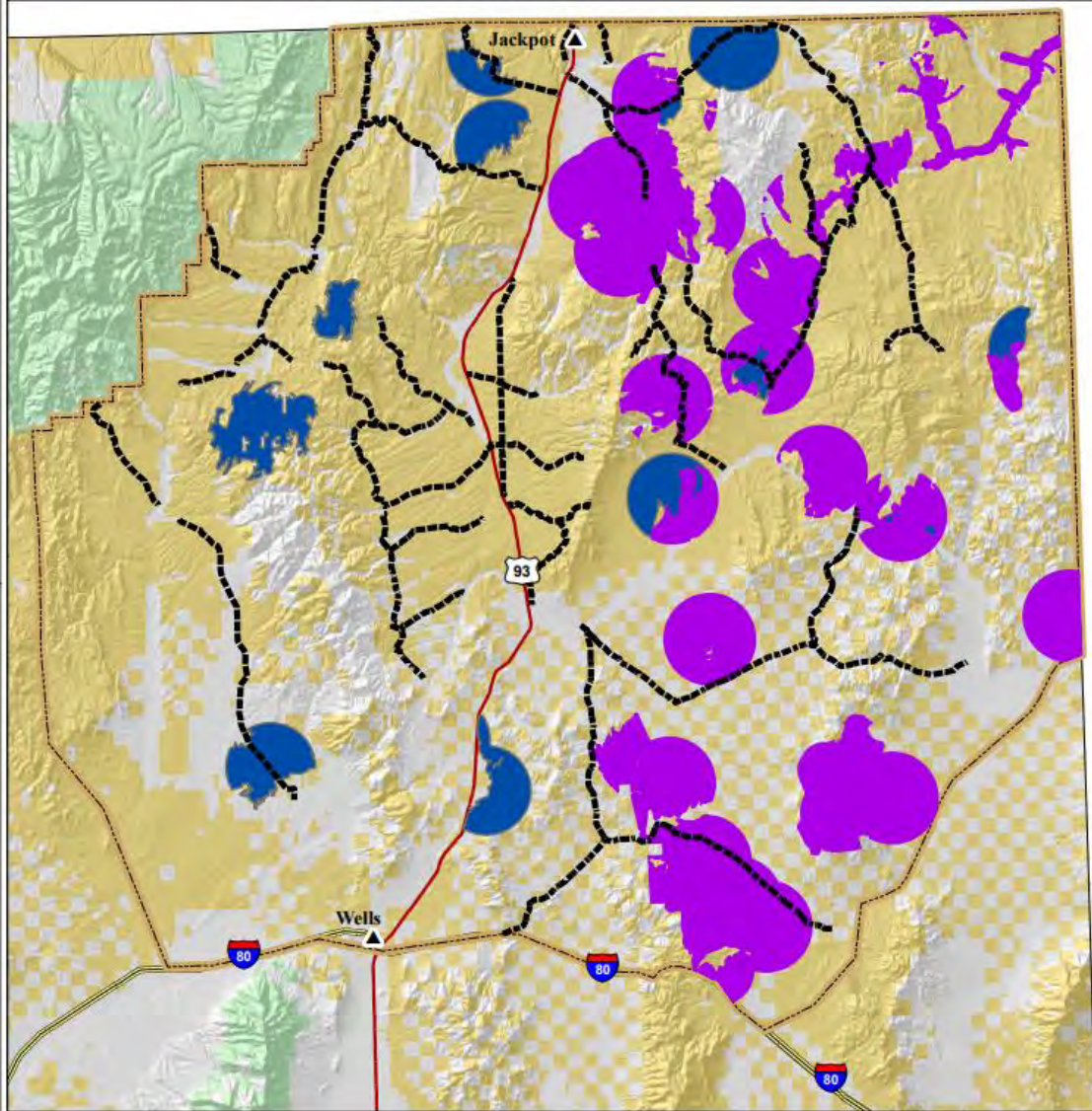
O'Neil Project Planning Area Proposed Treatments



UNITED STATES
DEPARTMENT OF THE INTERIOR
BUREAU OF LAND MANAGEMENT
ELKO DISTRICT OFFICE



*NO WARRANTY IS MADE BY THE BUREAU OF LAND MANAGEMENT
AS TO THE ACCURACY, RELIABILITY, OR COMPLETENESS OF THESE
DATA FOR INDIVIDUAL USE OR AGGREGATE USE WITH OTHER DATA.



LEGEND

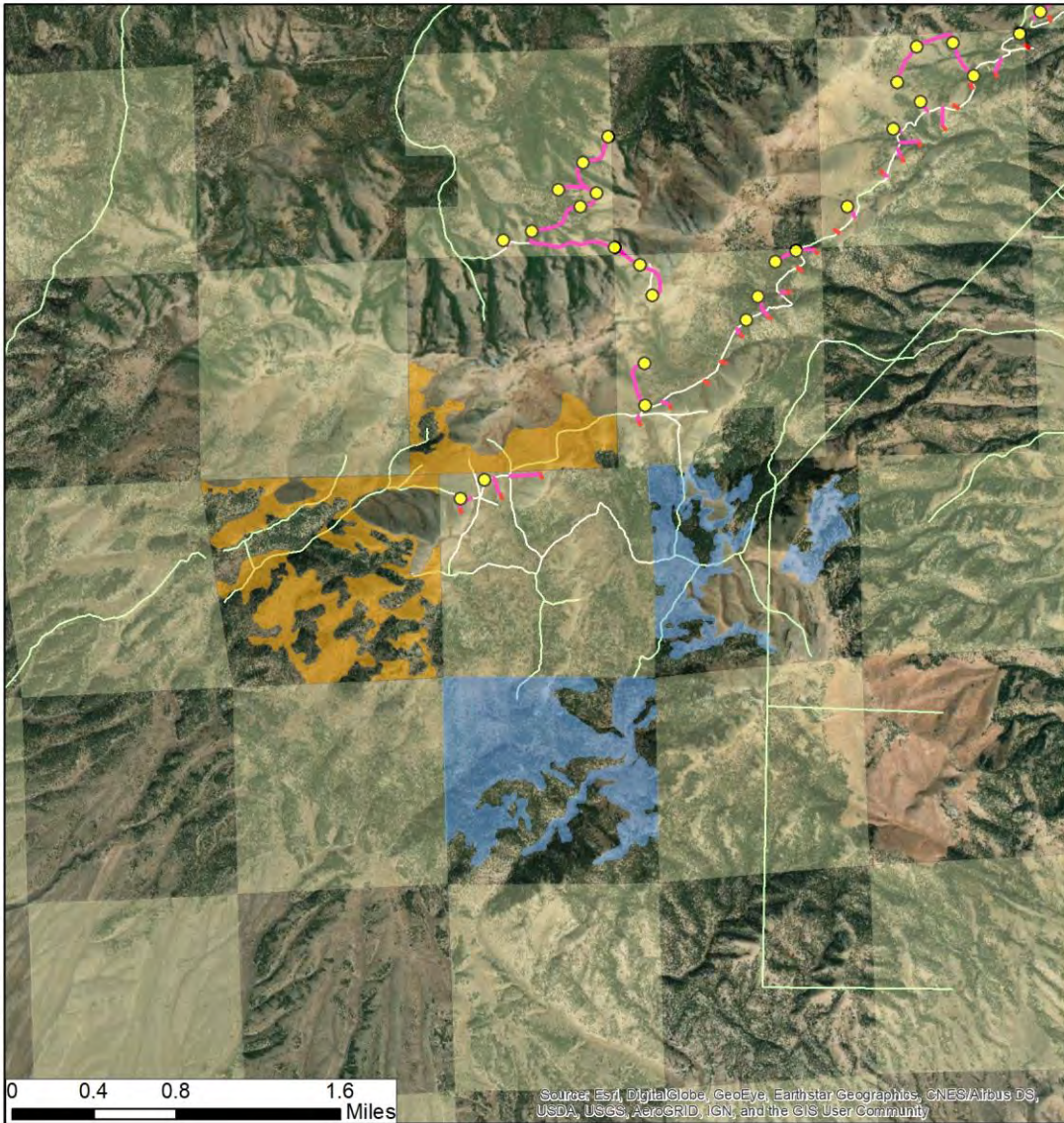
- O'Neil Project Planning Area
- Restoration Treatment Units
- Conifer Treatment Units

- Land Status**
- BLM
 - Private

Data Published In:
North American Datum 1983 (NAD83)
UTM Coordinates, Zone 11, Meters

0 5 10



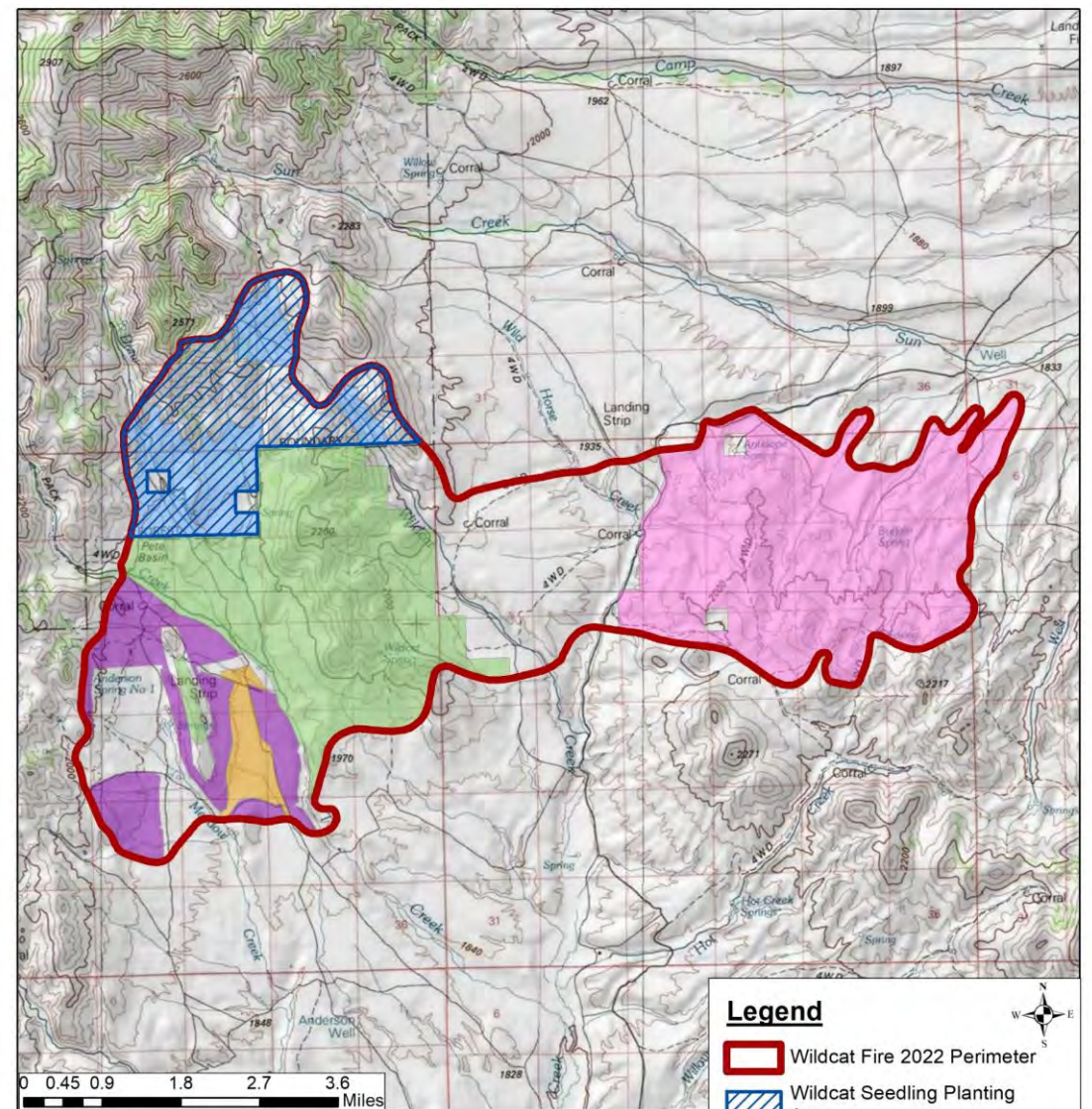


Murdock Mountain Pinyon-Juniper Removal

Mar. 1, 2023
 Projection: UTM Zone 11 North, NAD83
 No warranty is made by the Nevada Department
 of Wildlife as to the accuracy, reliability, or completeness
 of the data for individual use or aggregate use with other
 data.

Legend

- Murdock Mtn Mastication (954 ac)
- Murdock Mtn Hand-Thinning (453 ac)
- BLM
- PVT



2022 Wildcat Fire Post-Fire Rehab

Feb. 28, 2023
 Projection: UTM Zone 11 North, NAD83
 No warranty is made by the Nevada Department
 of Wildlife as to the accuracy, reliability, or completeness
 of the data for individual use or aggregate use with other
 data.

Legend

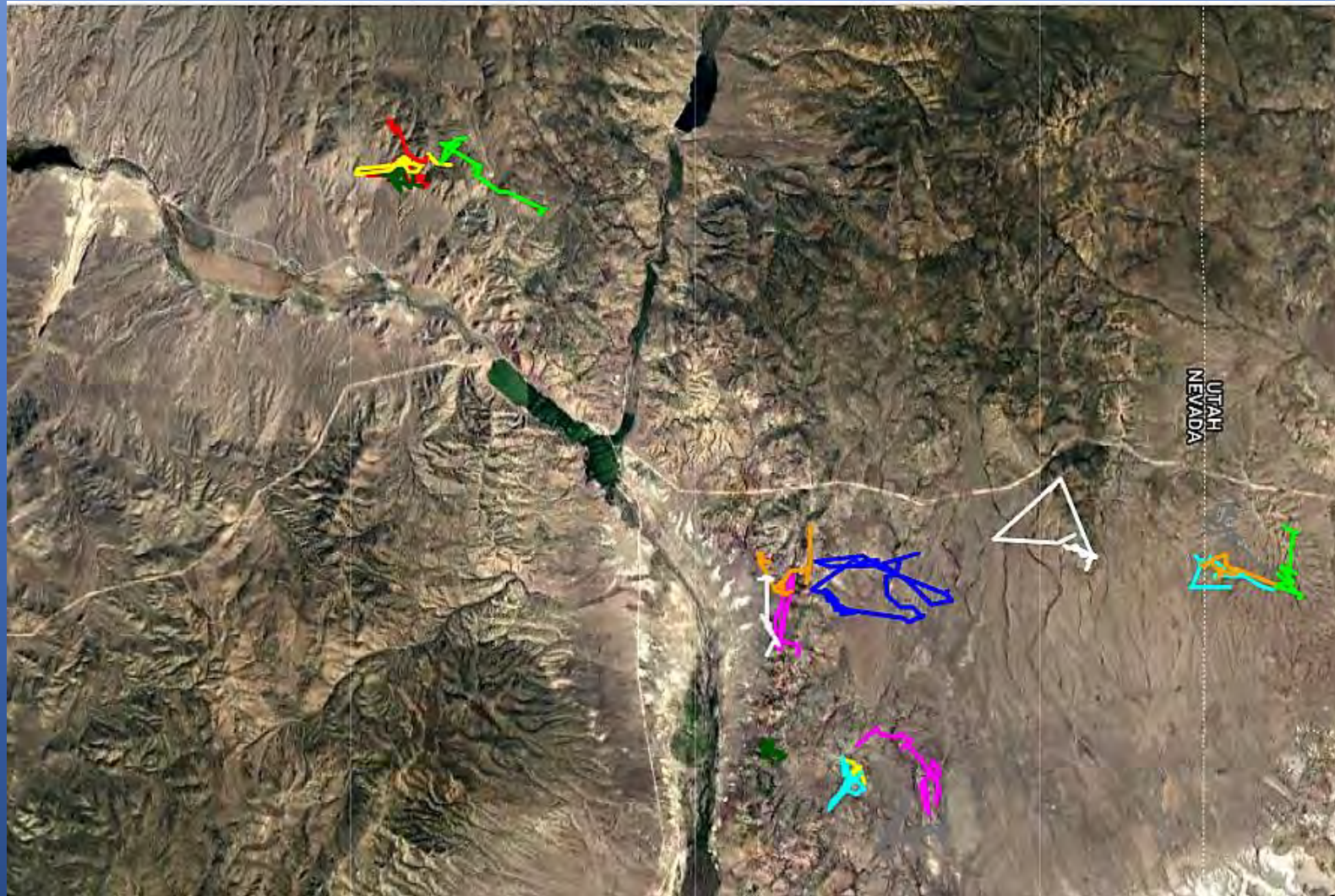
- Wildcat Fire 2022 Perimeter
- Wildcat Seedling Planting Area
- Drill Seeding 428 ac (BLM)
- Aerial Watershed Mix 1,550 ac (FS)
- Aerial ES Mix 9,228 ac (BLM)
- Aerial BAR Mix 6,124 ac (BLM)
- Aerial Wildlife Mix 1,800 ac (BLM)



Unit 081 Habitat Use Assessment

20 Doe Mule Deer

February 2023



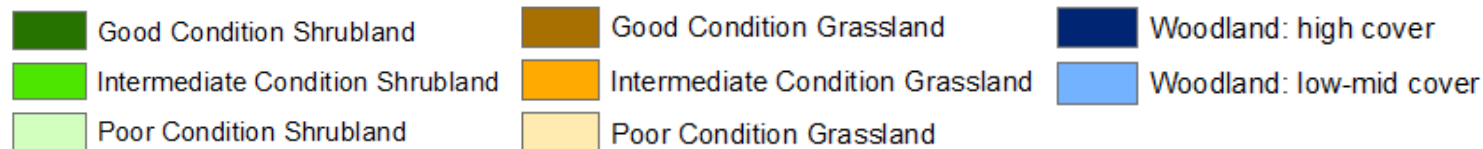
Unit 081 Tooth Data 2022

Date of Harvest	Weapon Type	Points on Left	Points on Right	Outside Spread	Main Beam Length
11/14/22	Res Archery	4	4	21	20
11/16/22	NR Archery	4	4	27.25	23.75
11/17/22	Res Archery	2	2	17.5	18
11/22/22	Junior	3	3	24	24
11/24/22	Muzzleloader	5	4	22	22
11/26/22	Muzzleloader	4	4	24	24.5
12/20/22	Junior	1	1	8.875	10.25

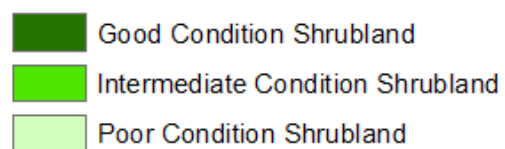
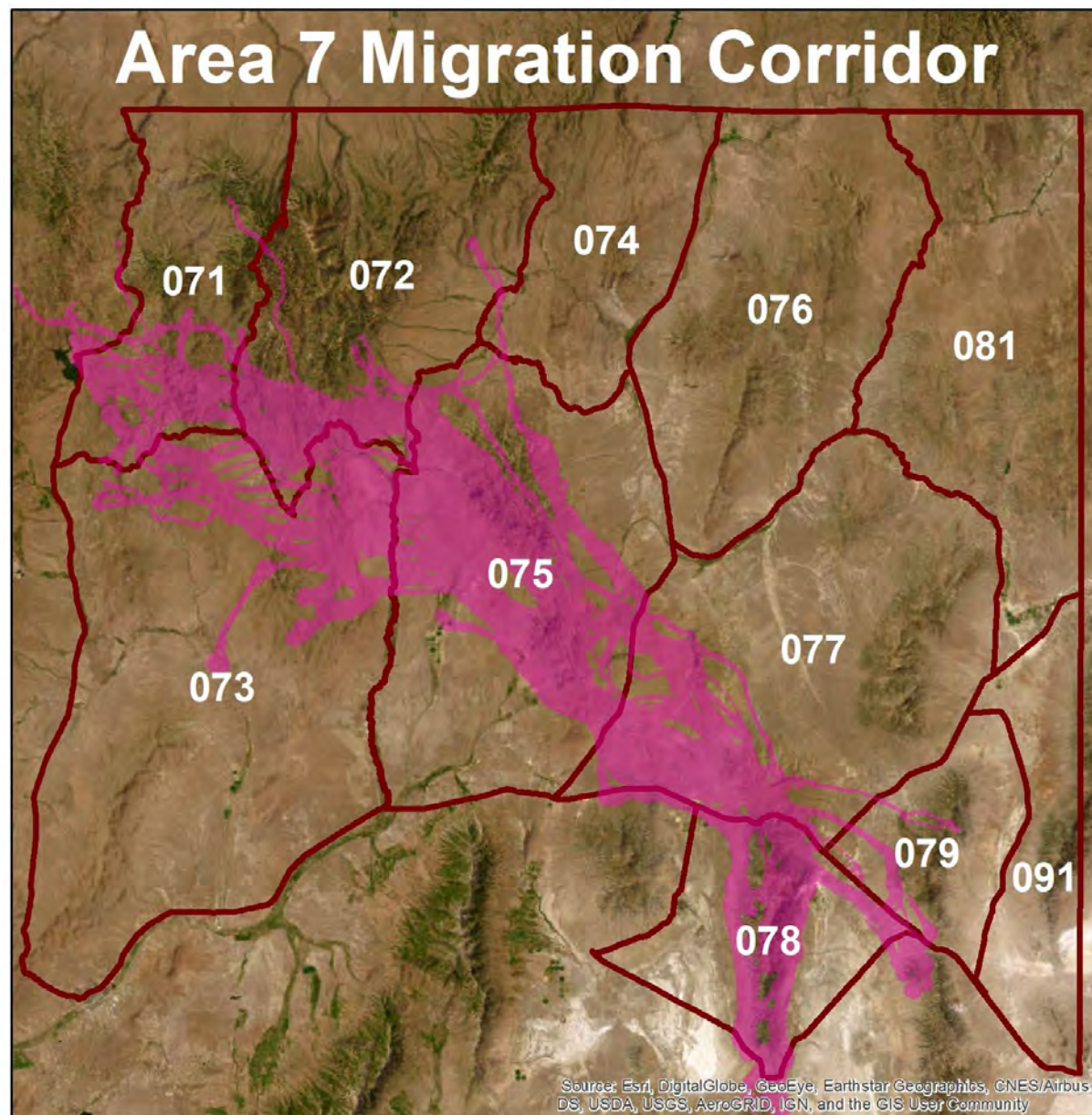
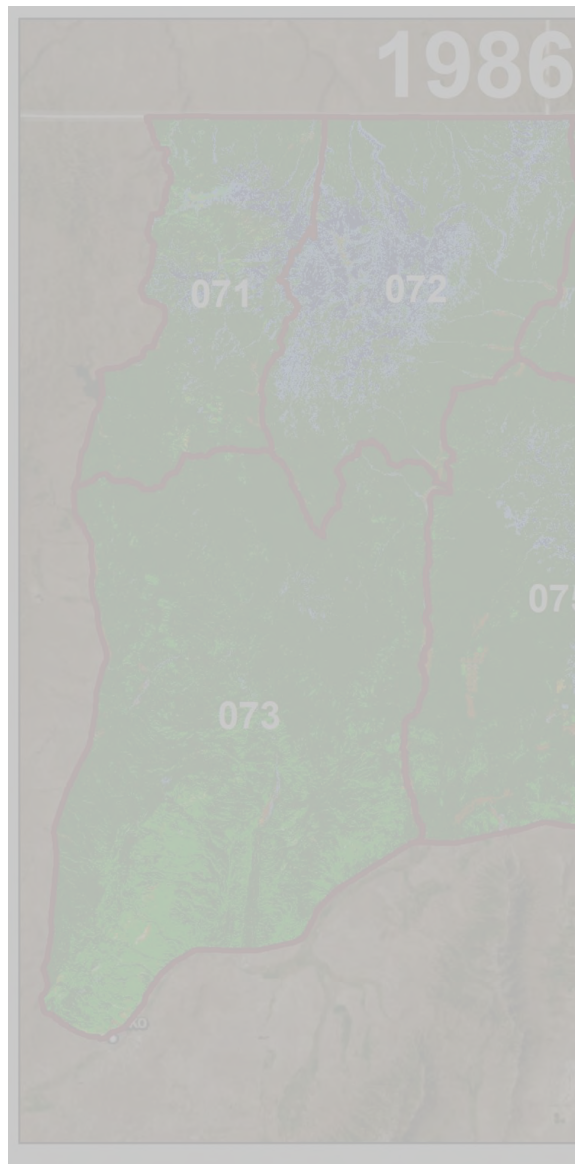
1986-1990

1991-1995

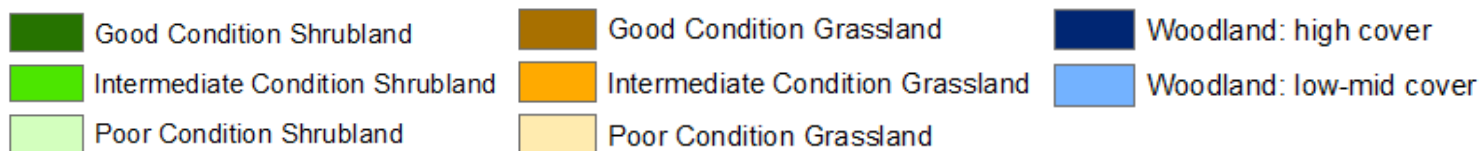
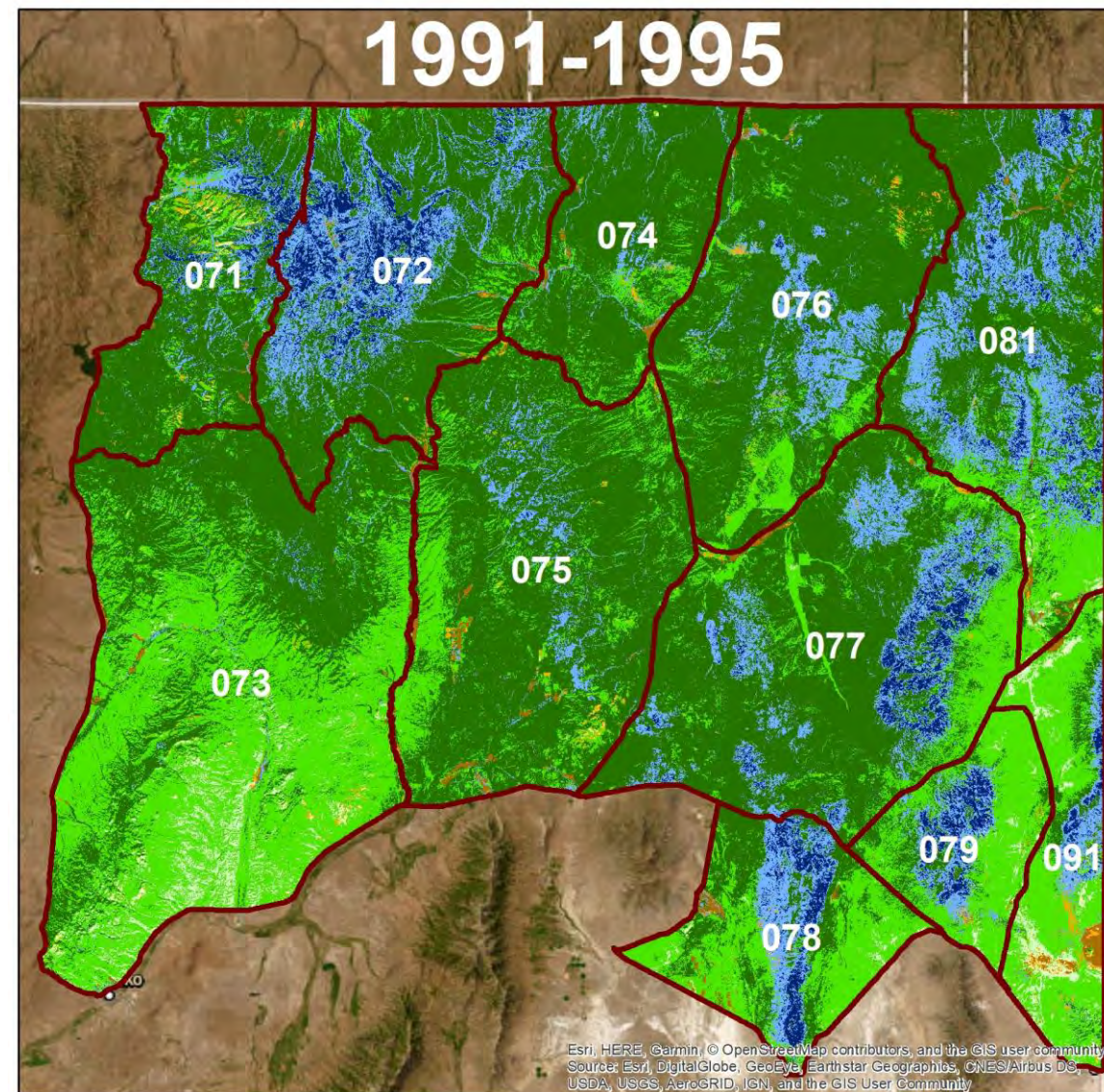
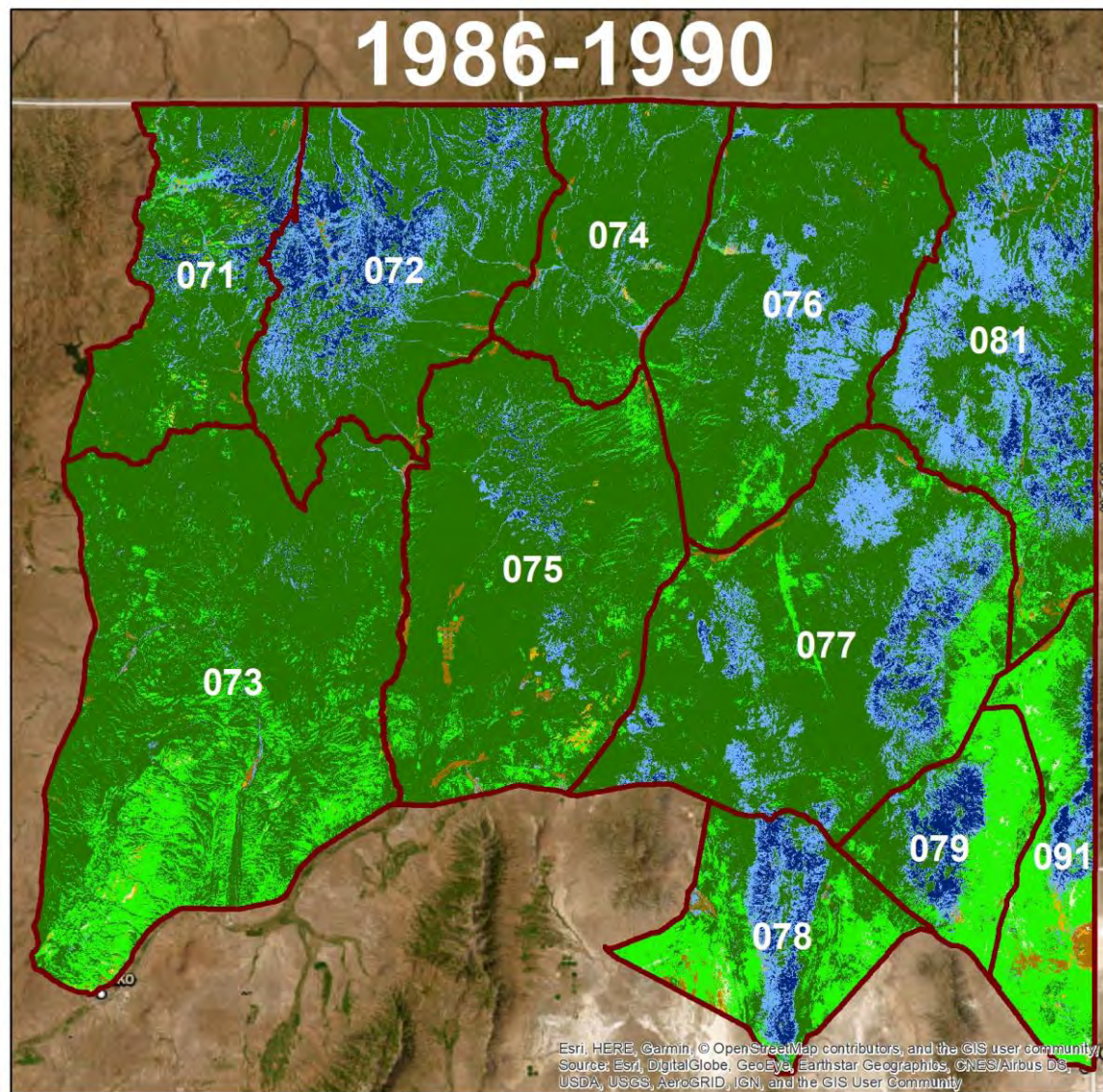
Area 7-8-9 Habitat Condition 1986-2020



	Ann : Per Understory	Shrub Cover	Tree Cover
Shrubland	< 0.3; 0.3-1.0; ≥ 1.0	≥ 10%	< 5%
Grassland	< 0.3; 0.3-1.0; ≥ 1.0	< 10%	< 5%
Woodland	[all]	[all]	5-20% (low); >20% (high)

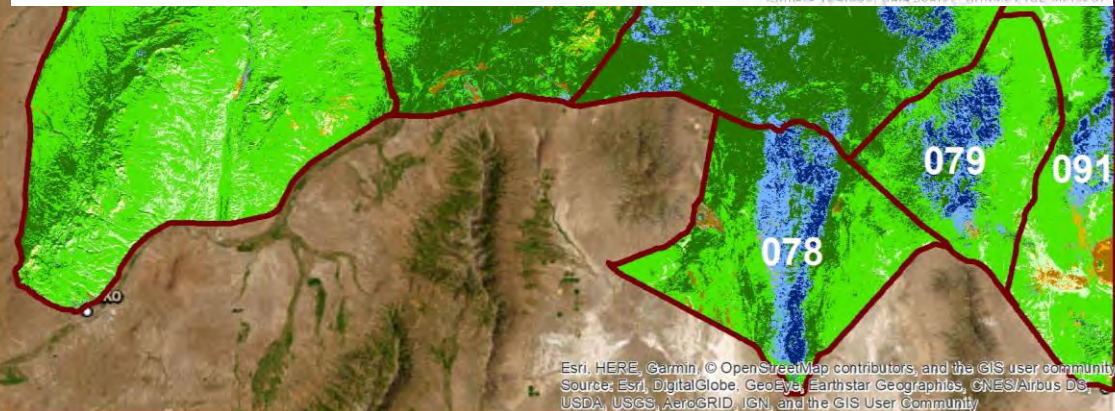
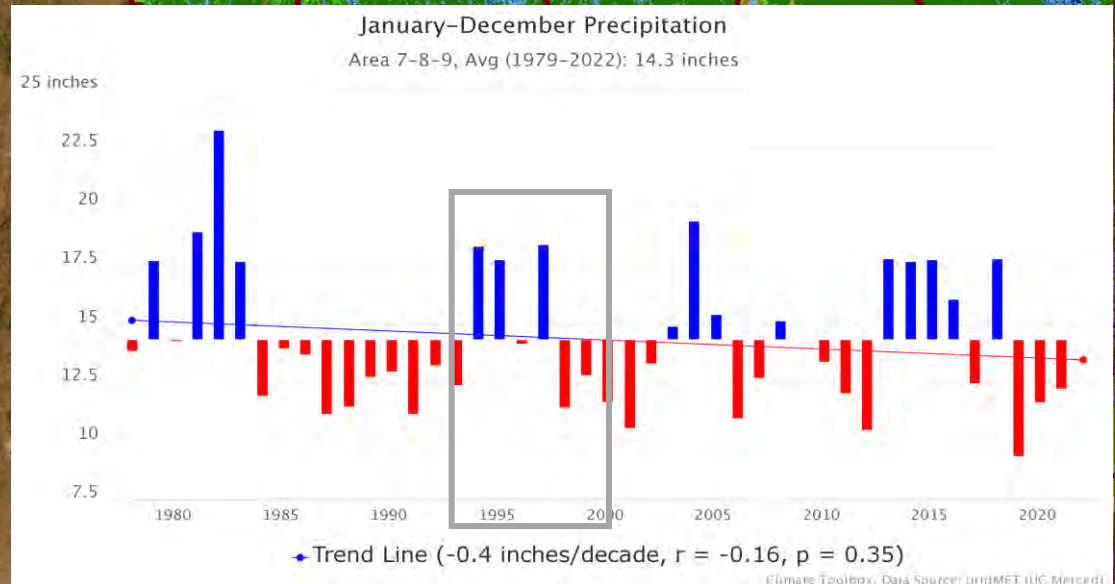


er Understory	Shrub Cover	Tree Cover
0.3-1.0; ≥ 1.0	≥ 10%	< 5%
0.3-1.0; ≥ 1.0	< 10%	< 5%
Woodland	[all]	[all]
		5-20% (low); >20% (high)

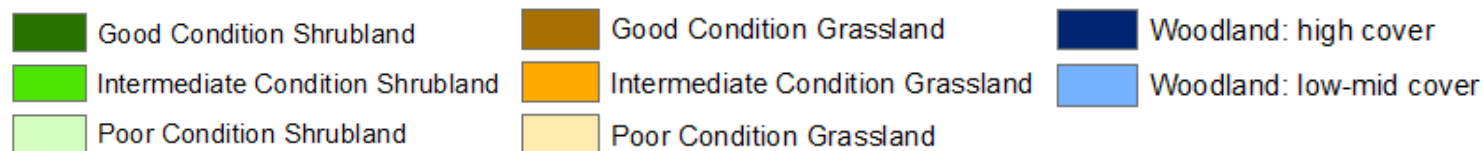
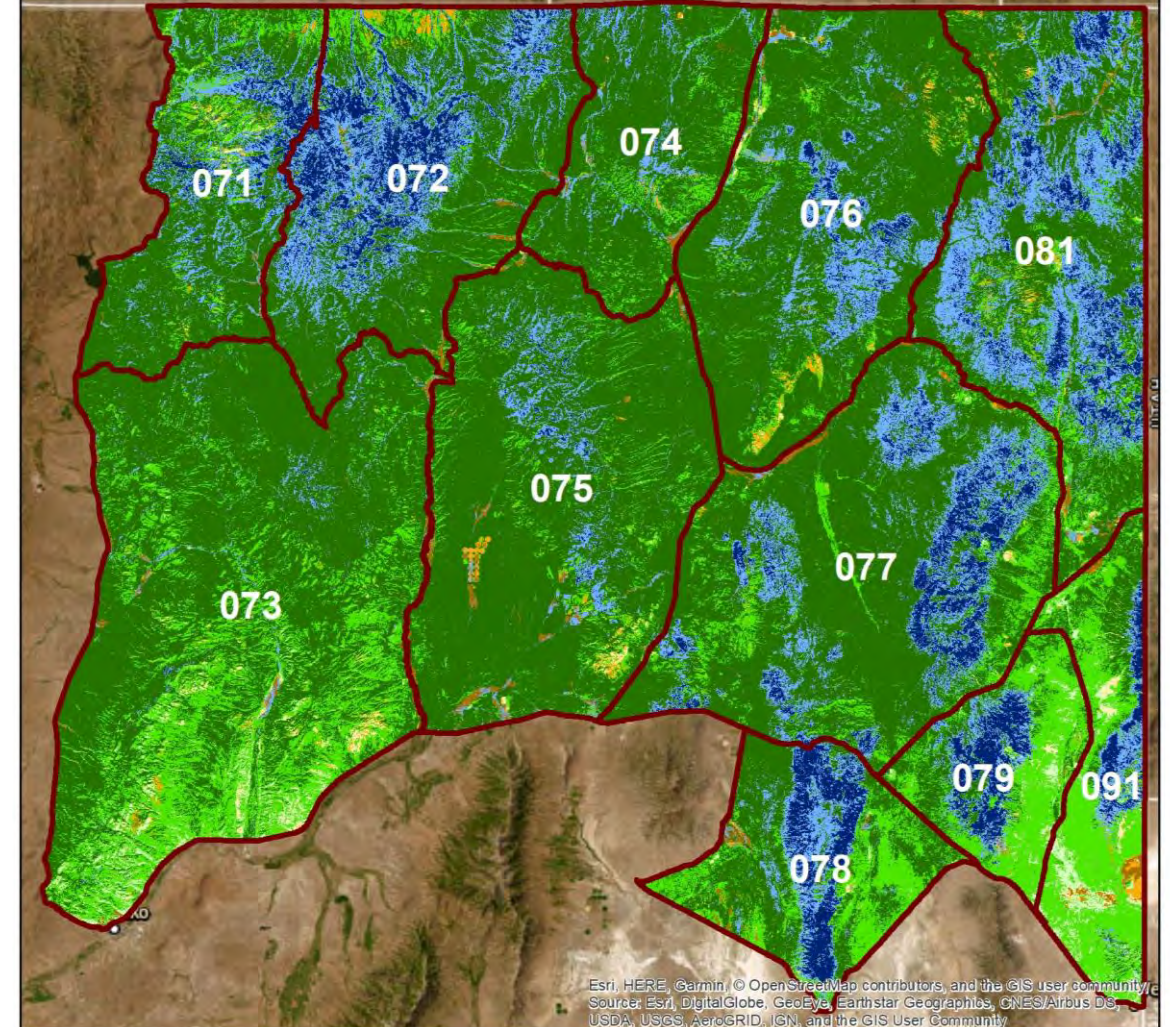


	Ann : Per Understory	Shrub Cover	Tree Cover
Shrubland	< 0.3; 0.3-1.0; ≥ 1.0	≥ 10%	< 5%
Grassland	< 0.3; 0.3-1.0; ≥ 1.0	< 10%	< 5%
Woodland	[all]	[all]	5-20% (low); >20% (high)

1991-1995

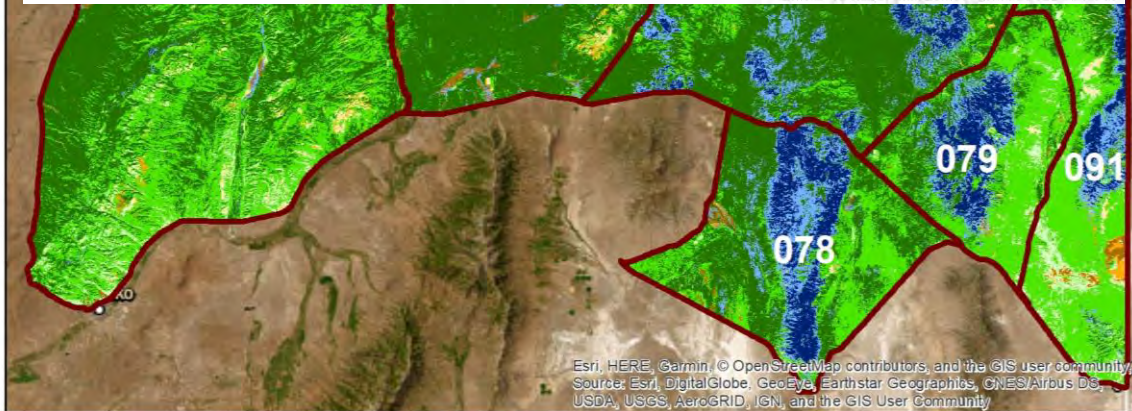
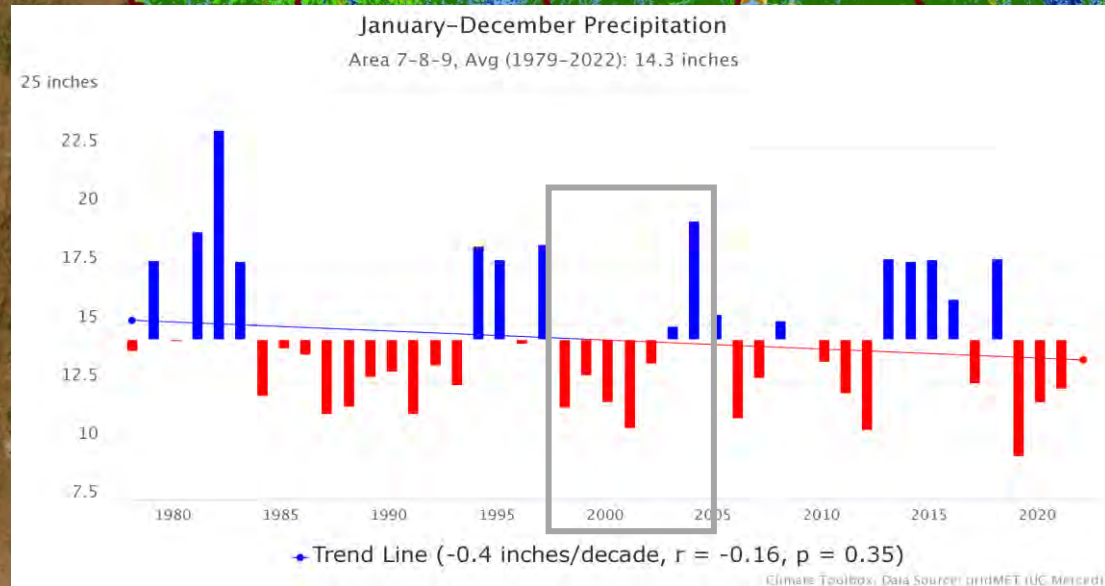


1996-2000

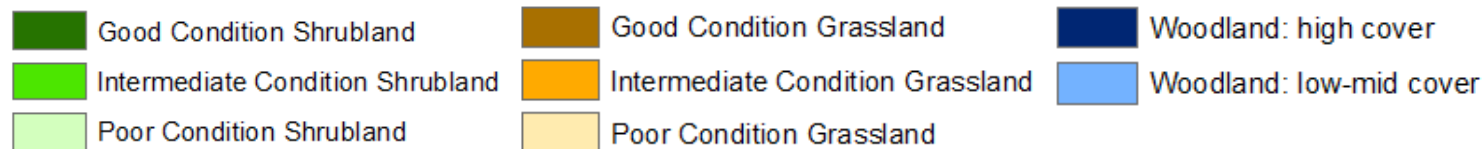
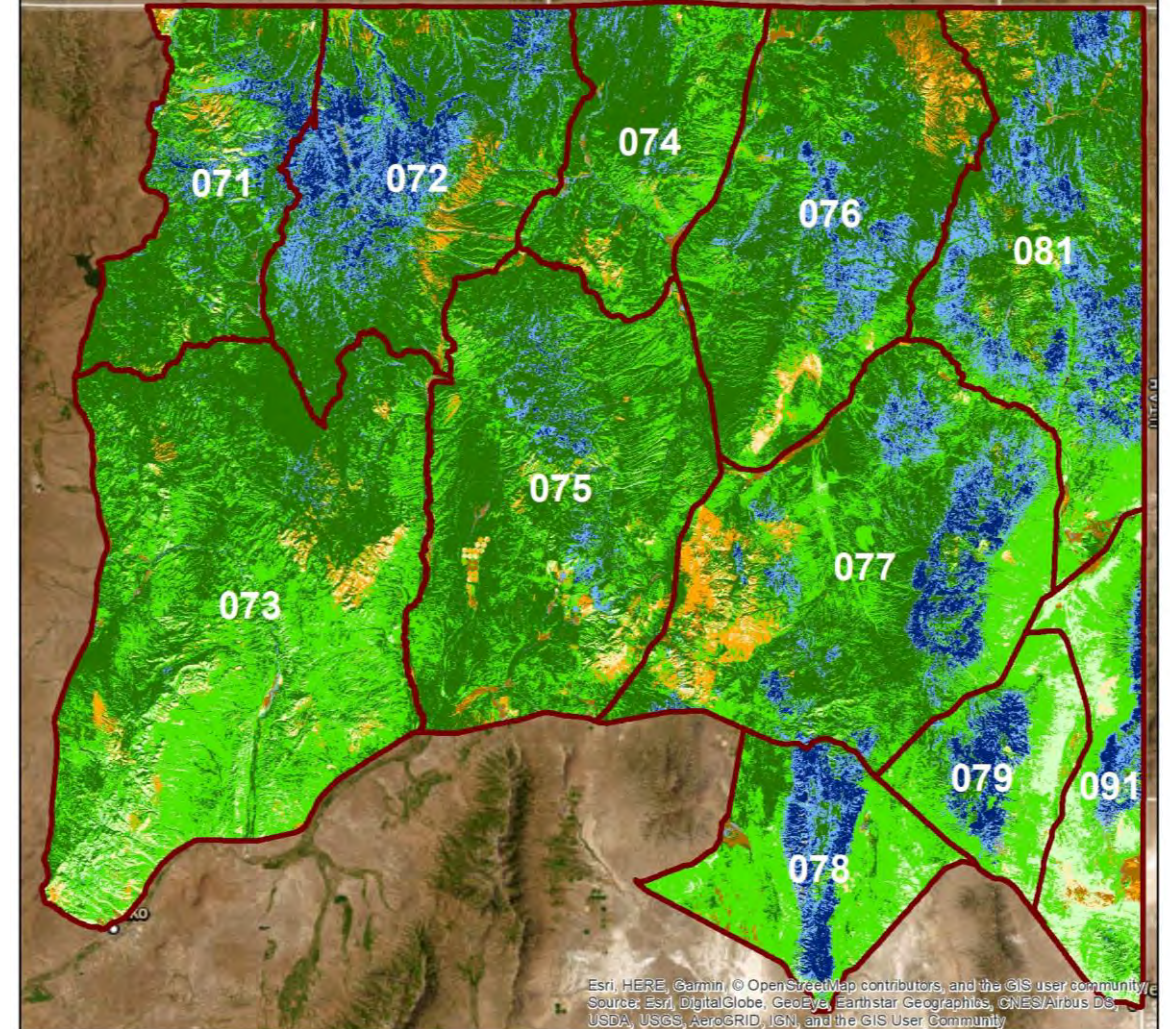


	Ann : Per Understory	Shrub Cover	Tree Cover
Shrubland	< 0.3; 0.3-1.0; ≥ 1.0	≥ 10%	< 5%
Grassland	< 0.3; 0.3-1.0; ≥ 1.0	< 10%	< 5%
Woodland	[all]	[all]	5-20% (low); >20% (high)

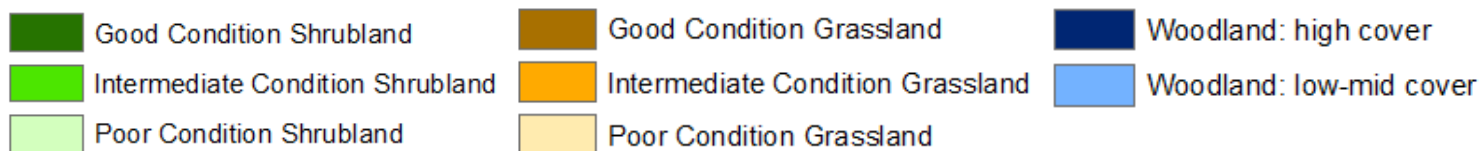
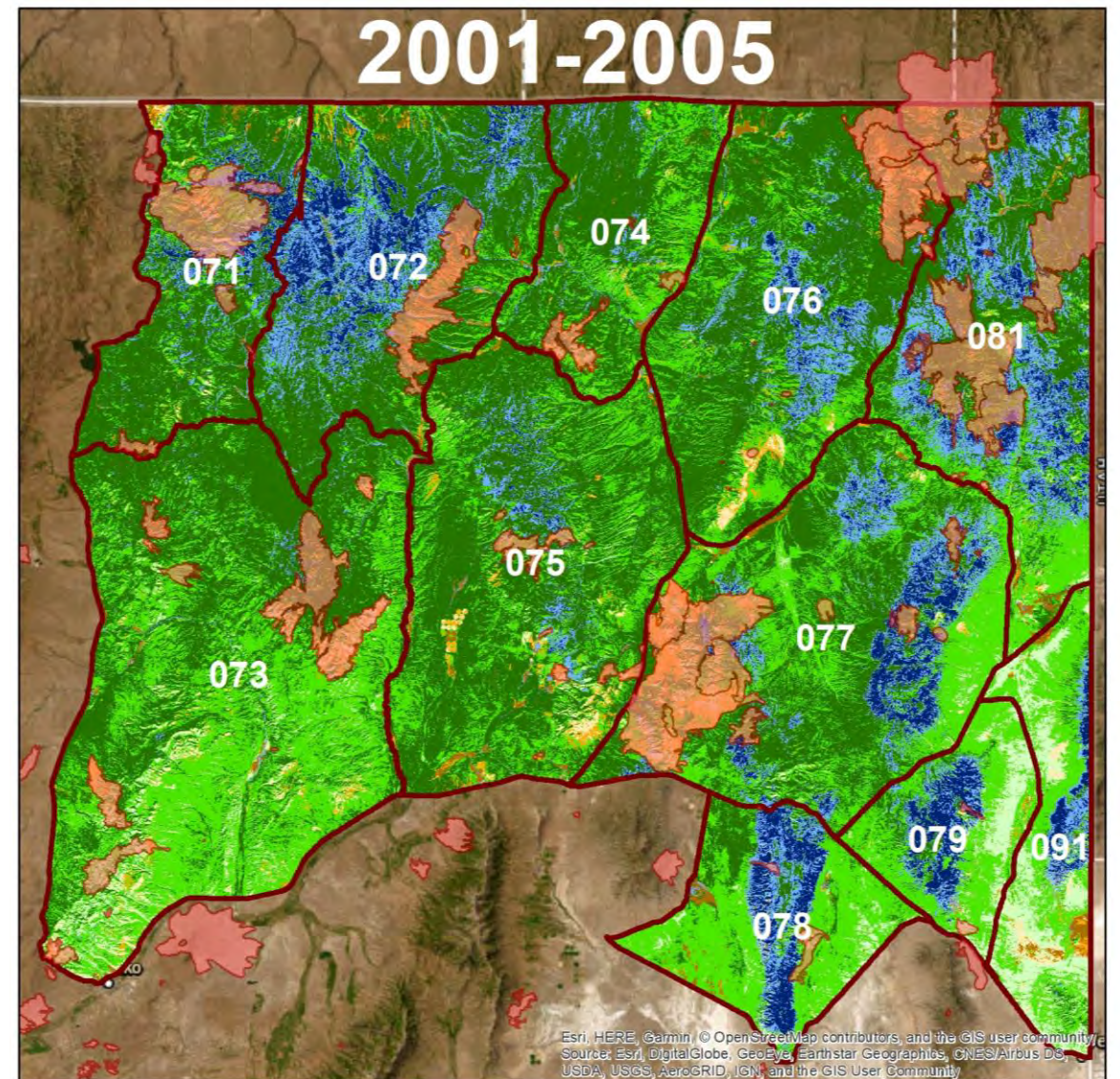
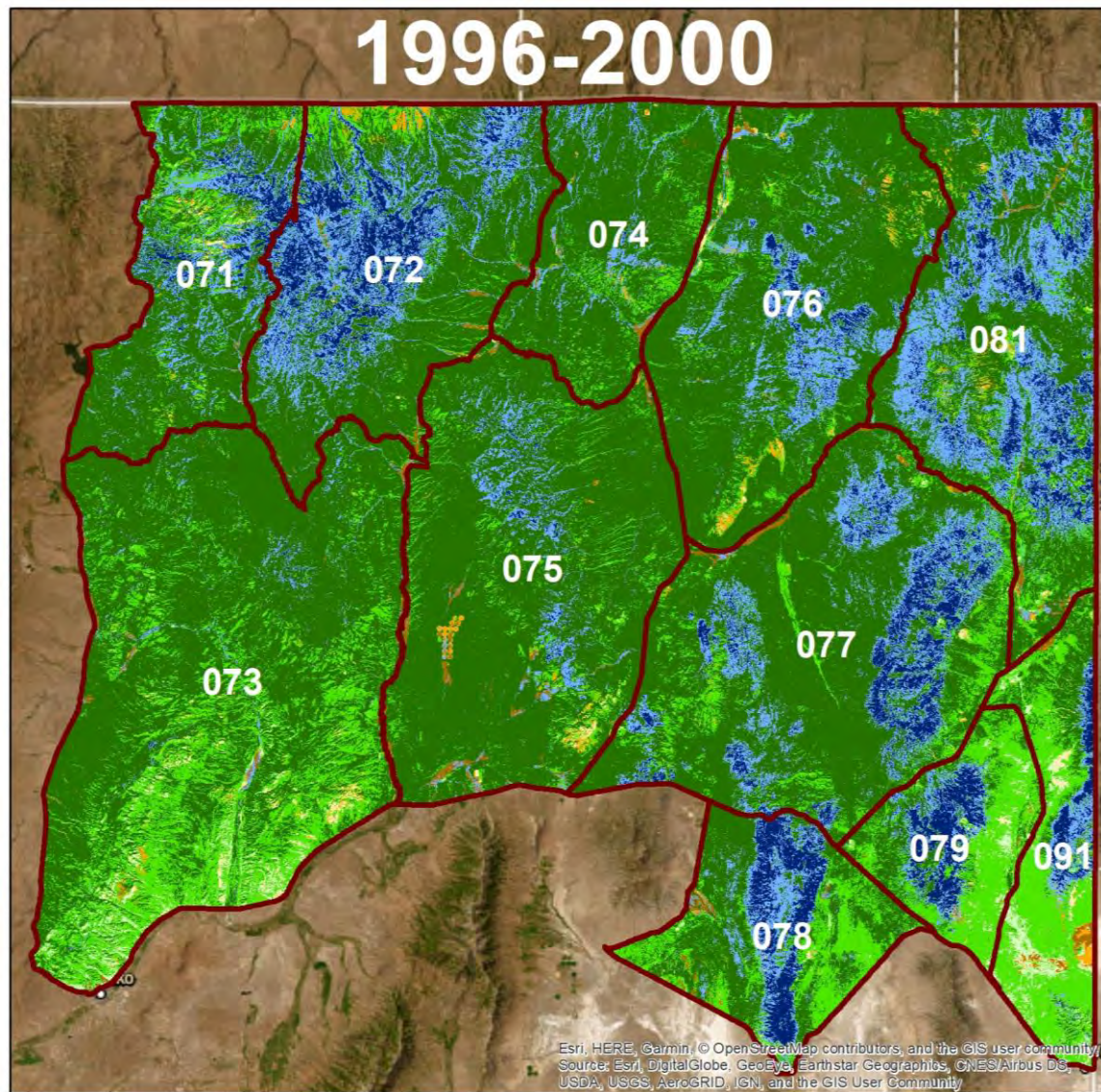
1996-2000



2001-2005

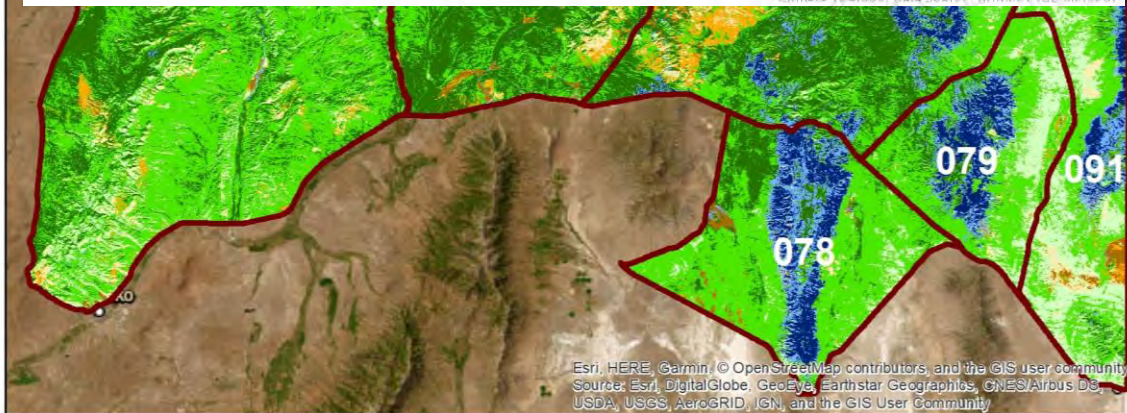
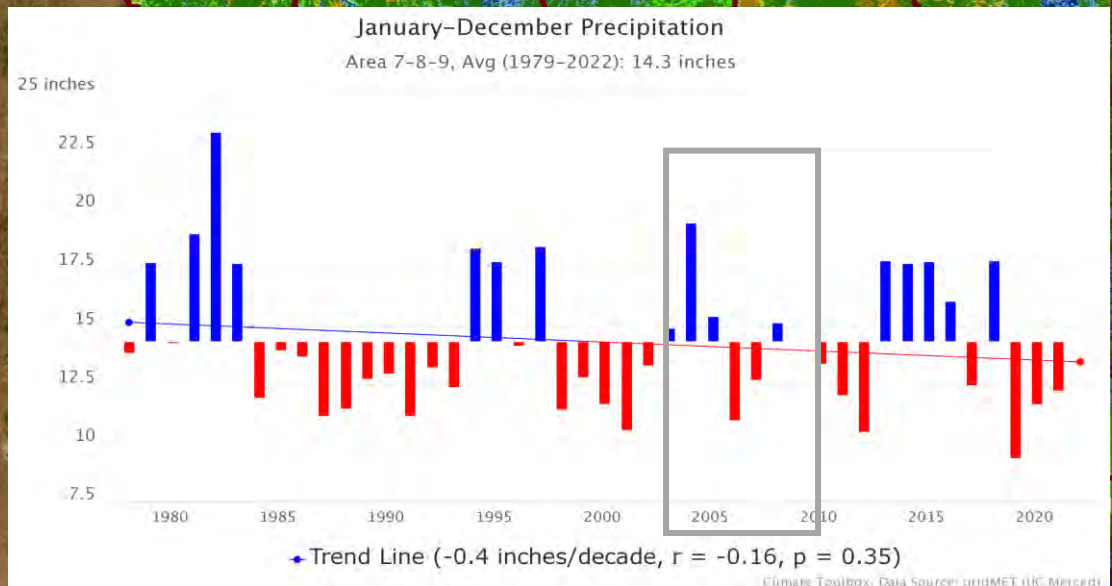


	Ann : Per Understory	Shrub Cover	Tree Cover
Shrubland	< 0.3; 0.3-1.0; ≥ 1.0	≥ 10%	< 5%
Grassland	< 0.3; 0.3-1.0; ≥ 1.0	< 10%	< 5%
Woodland	[all]	[all]	5-20% (low); >20% (high)

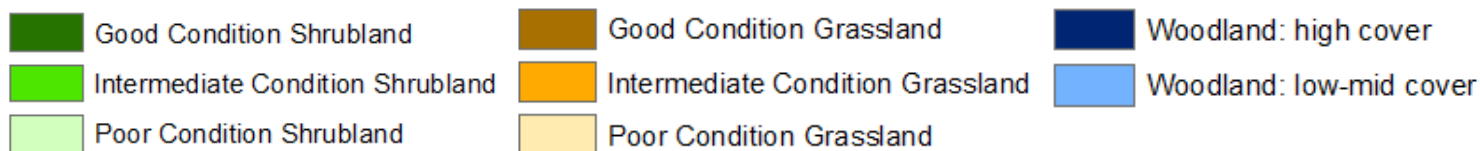
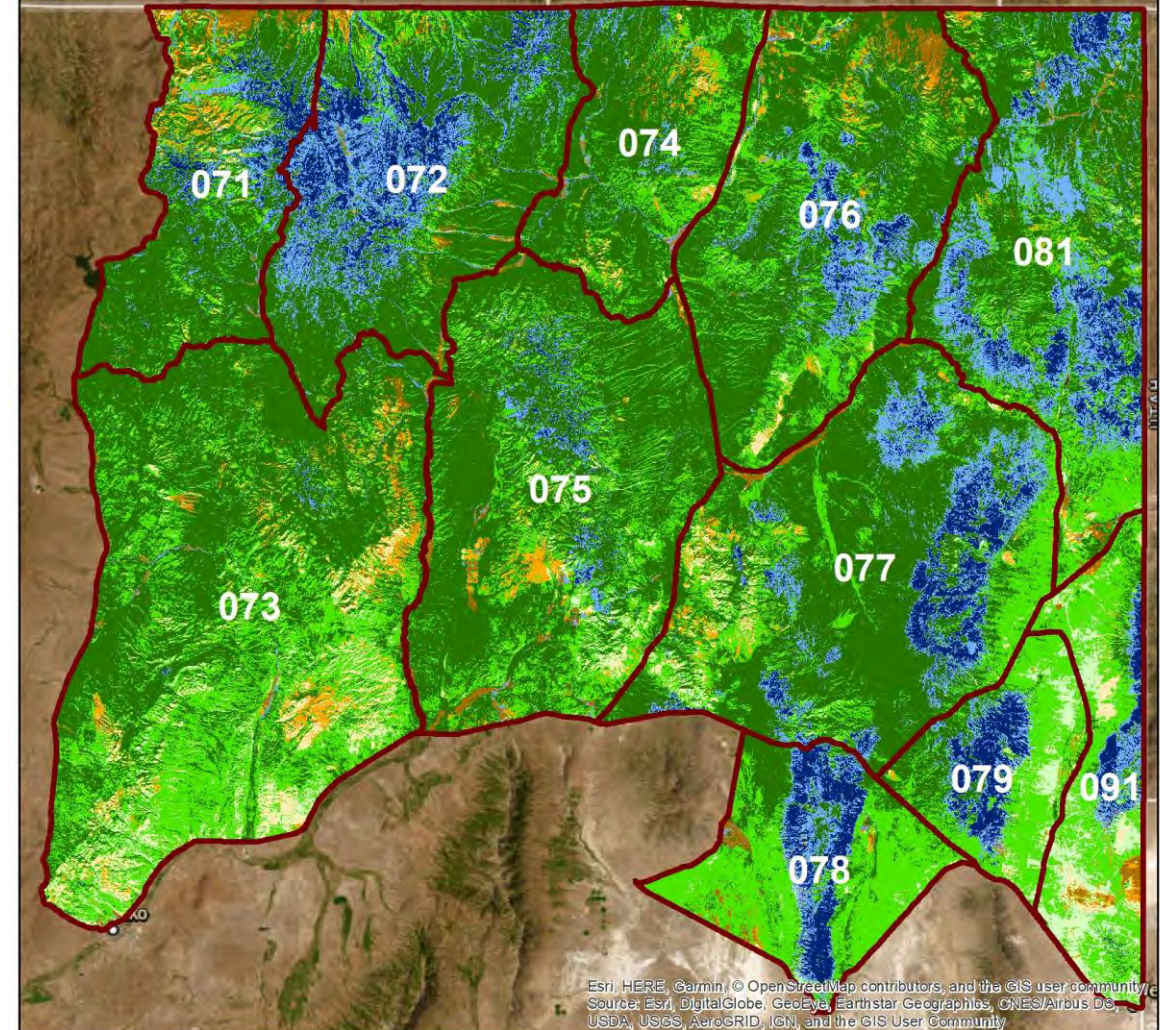


	Ann : Per Understory	Shrub Cover	Tree Cover
Shrubland	< 0.3; 0.3-1.0; ≥ 1.0	≥ 10%	< 5%
Grassland	< 0.3; 0.3-1.0; ≥ 1.0	< 10%	< 5%
Woodland	[all]	[all]	5-20% (low); >20% (high)

2001-2005

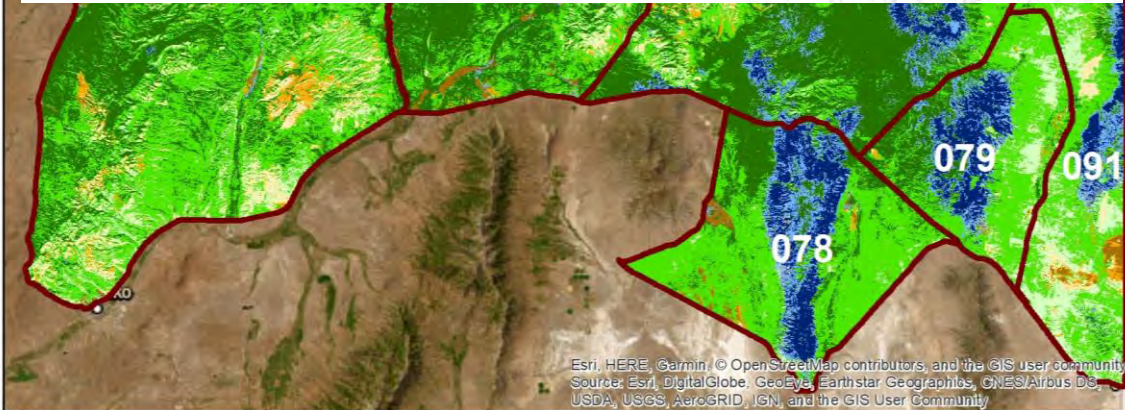
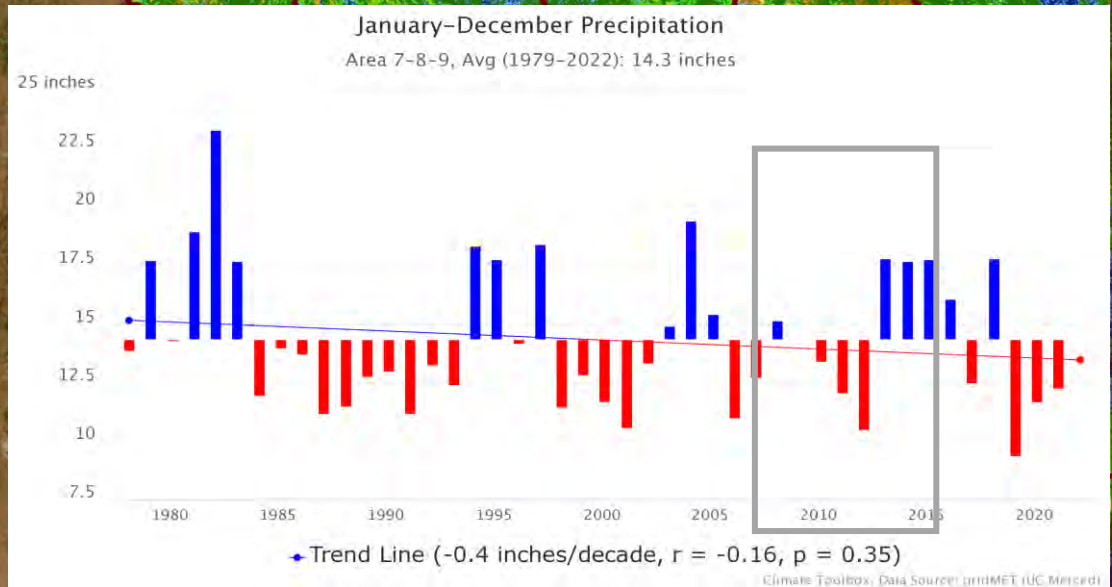


2006-2010

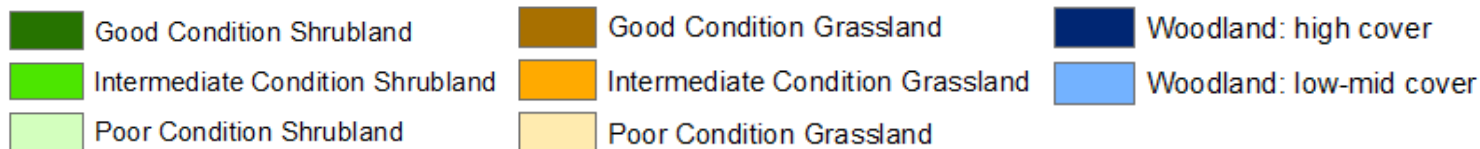
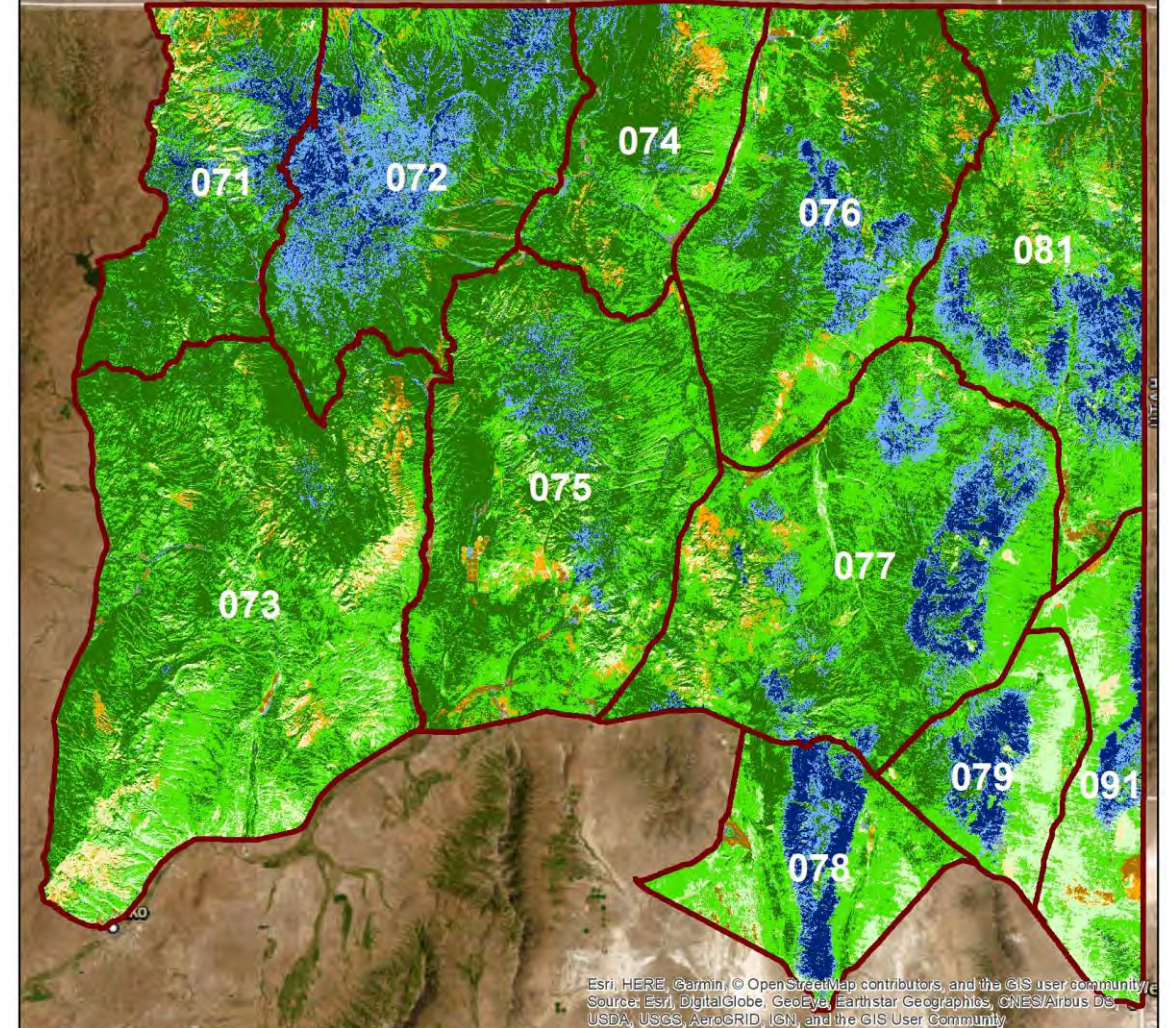


	Ann : Per Understory	Shrub Cover	Tree Cover
Shrubland	< 0.3; 0.3-1.0; ≥ 1.0	≥ 10%	< 5%
Grassland	< 0.3; 0.3-1.0; ≥ 1.0	< 10%	< 5%
Woodland	[all]	[all]	5-20% (low); >20% (high)

2006-2010

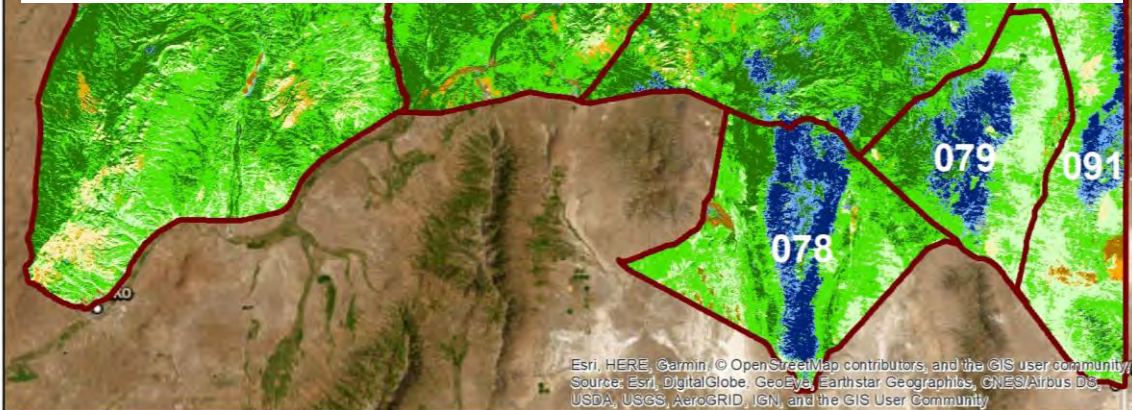
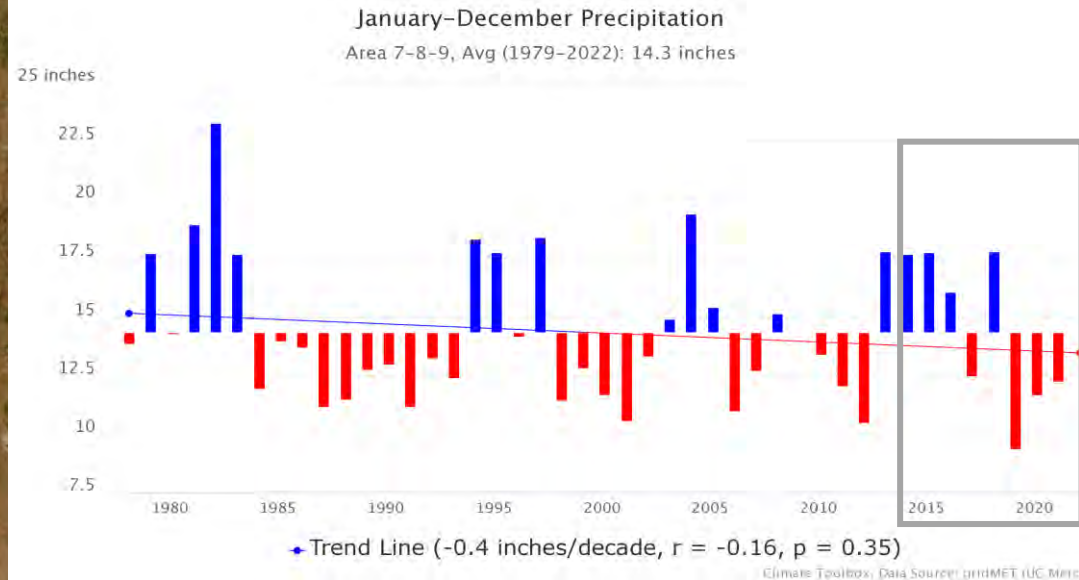


2011-2015

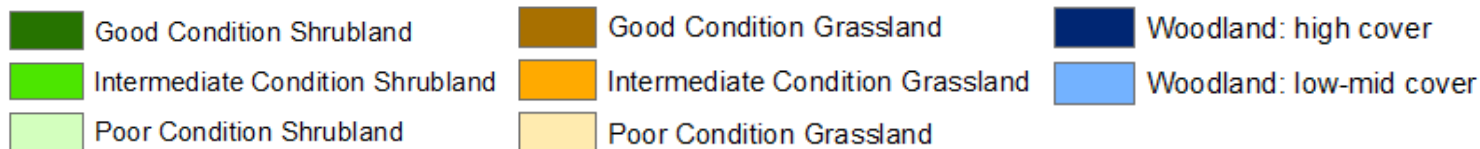
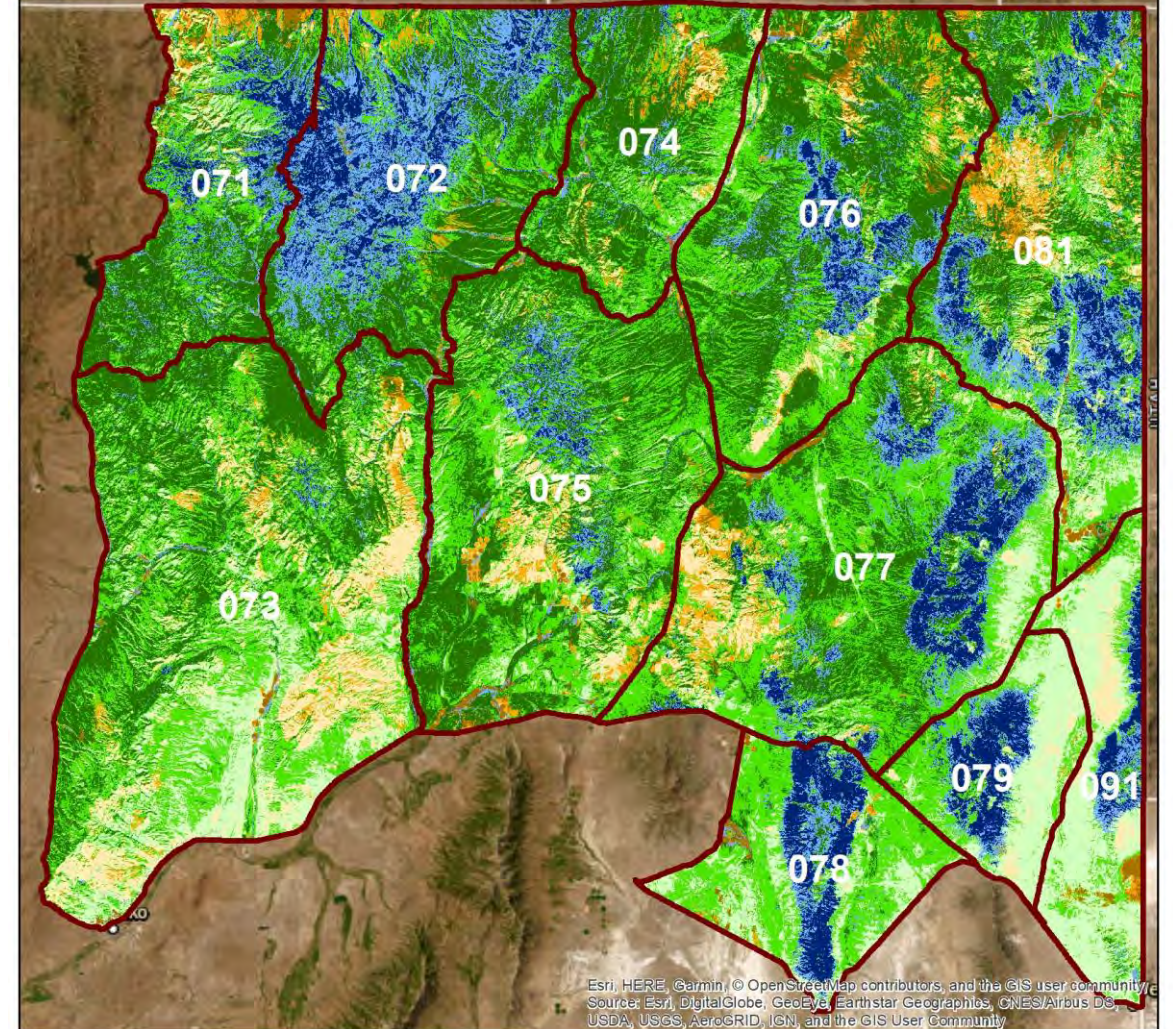


	Ann : Per Understory	Shrub Cover	Tree Cover
Shrubland	< 0.3; 0.3-1.0; ≥ 1.0	≥ 10%	< 5%
Grassland	< 0.3; 0.3-1.0; ≥ 1.0	< 10%	< 5%
Woodland	[all]	[all]	5-20% (low); >20% (high)

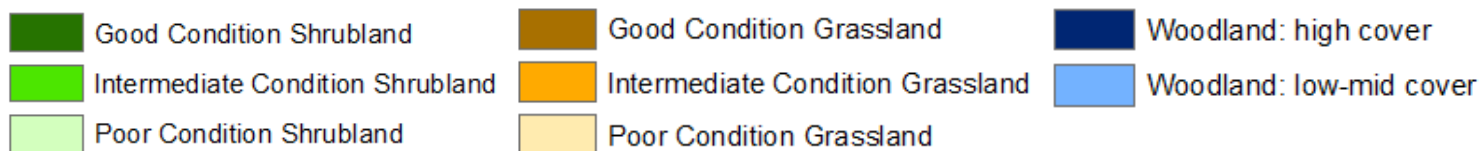
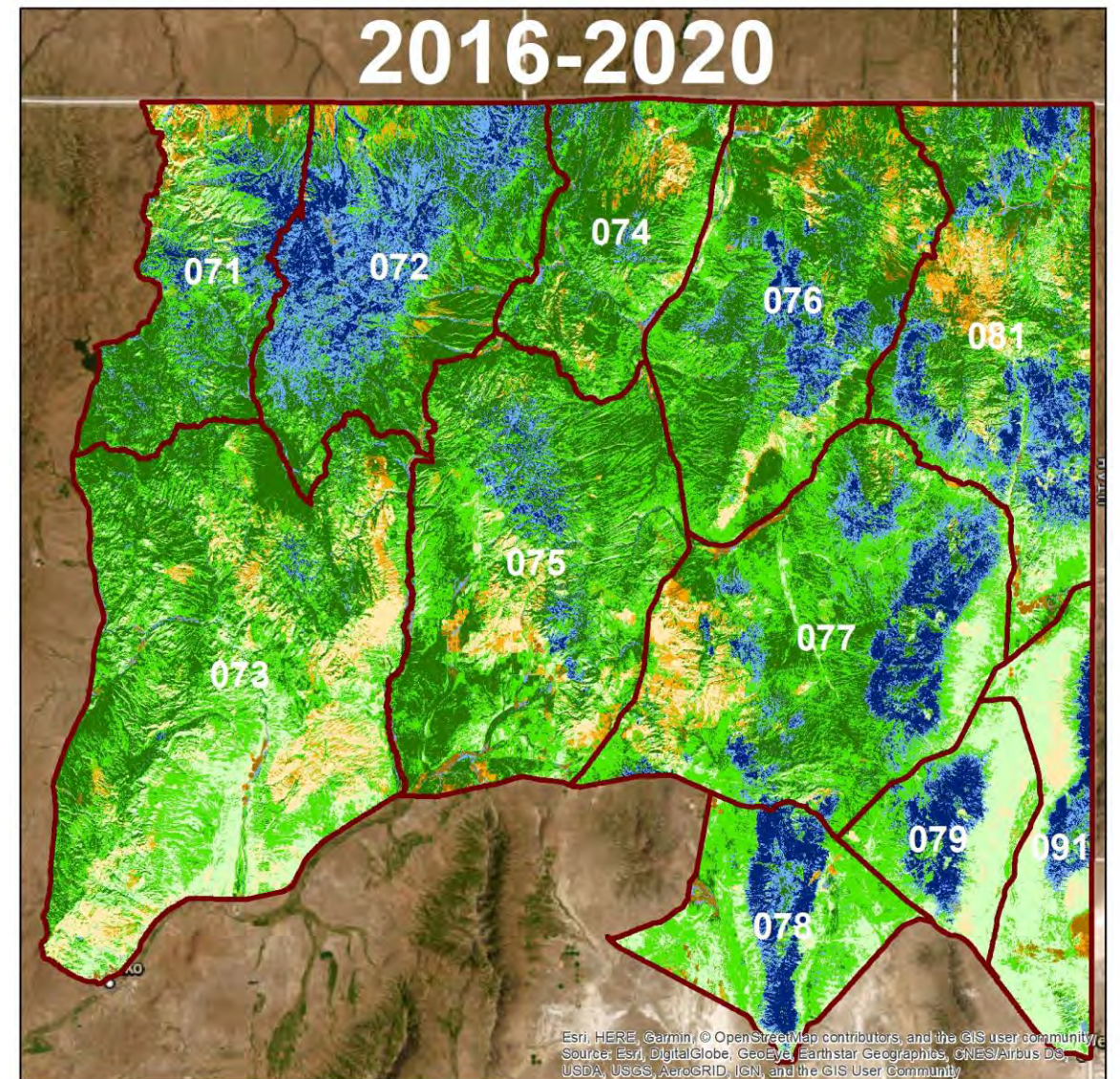
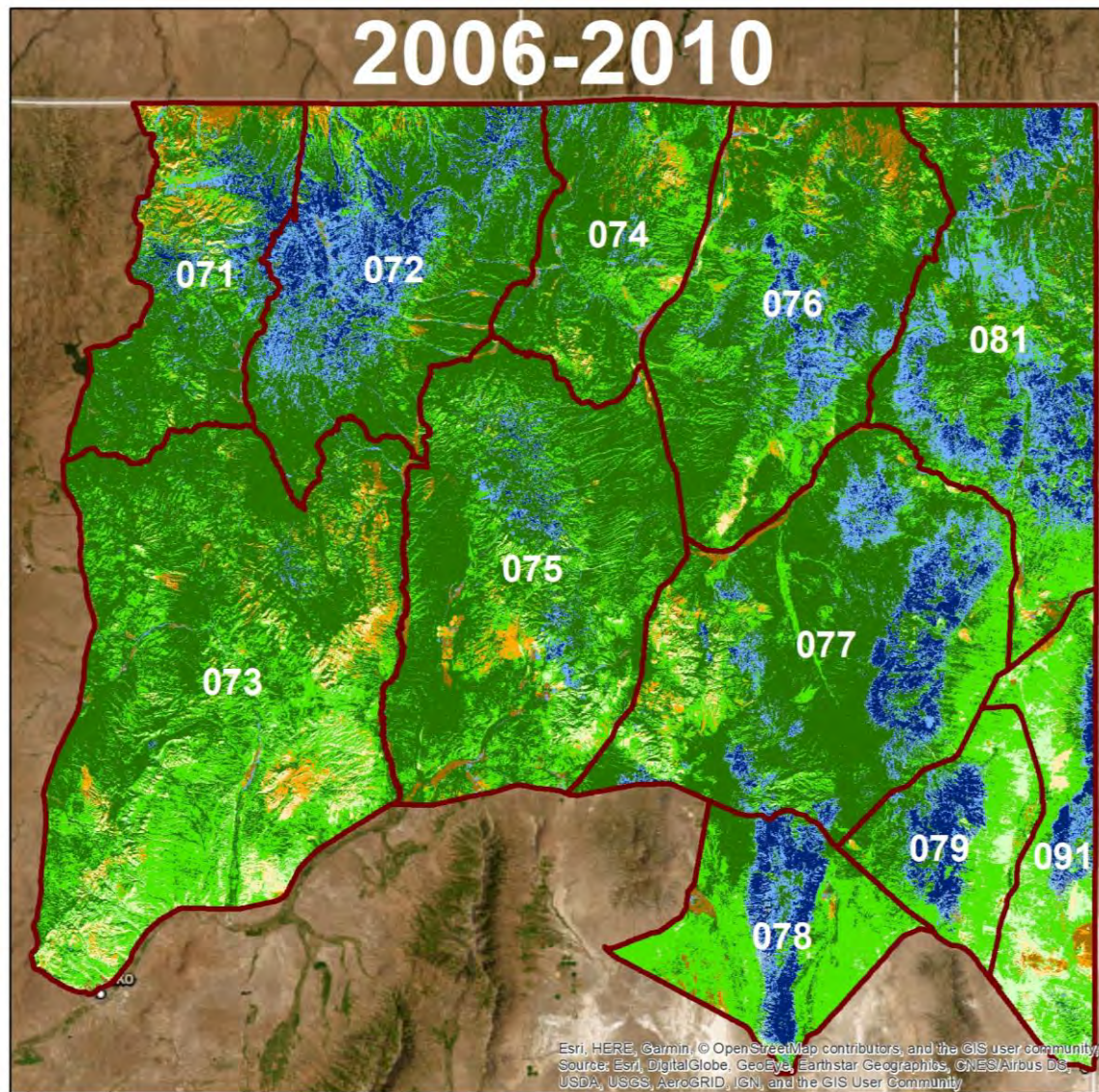
2011-2015



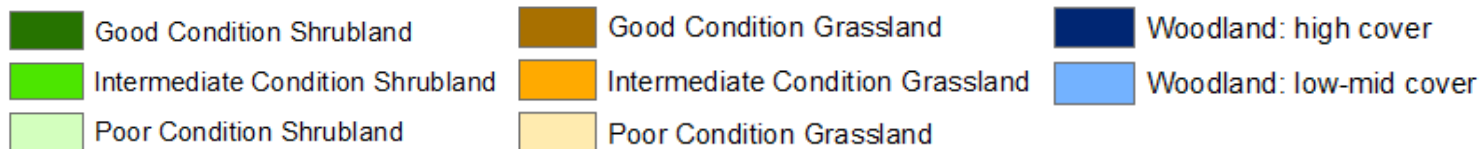
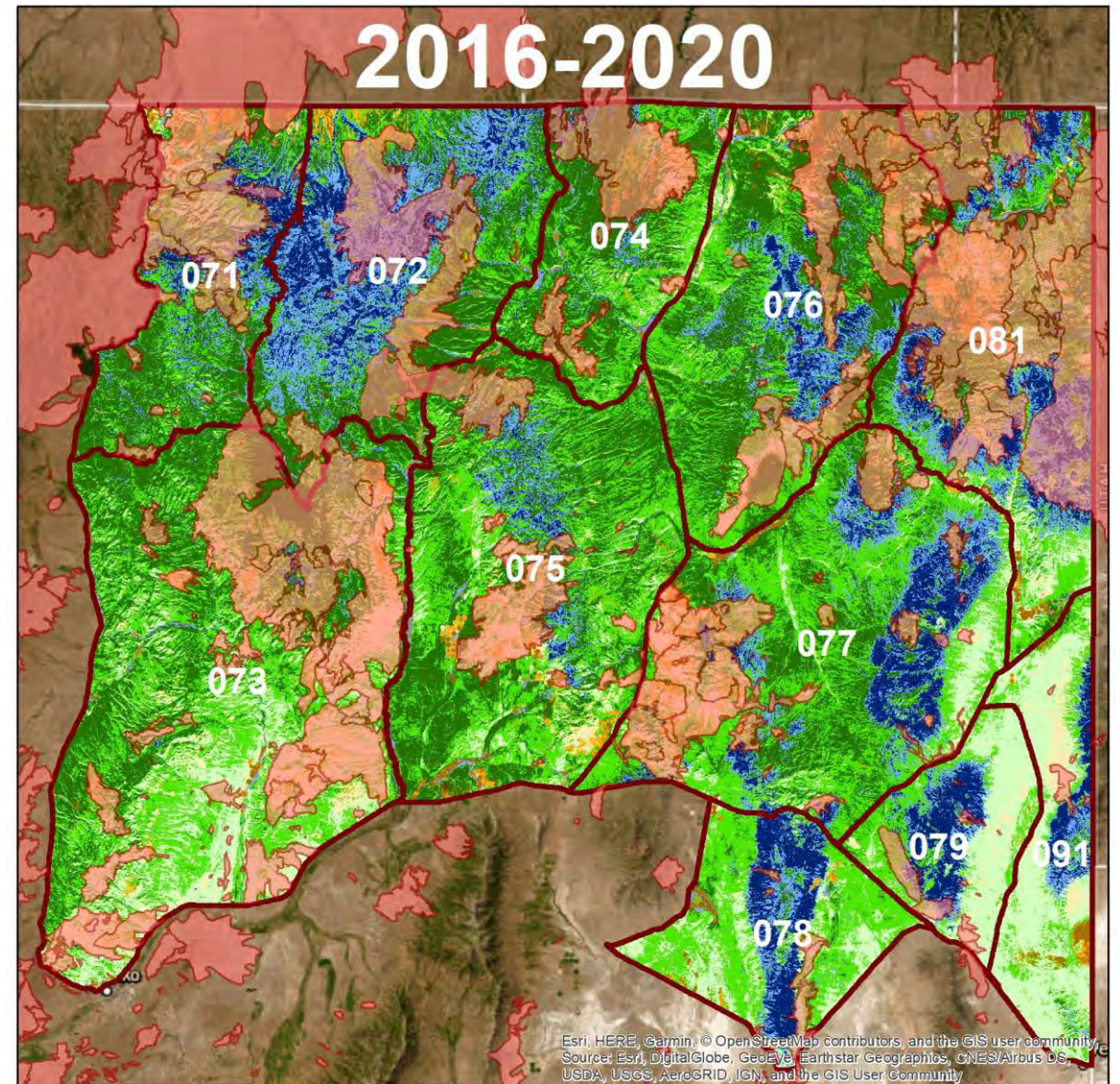
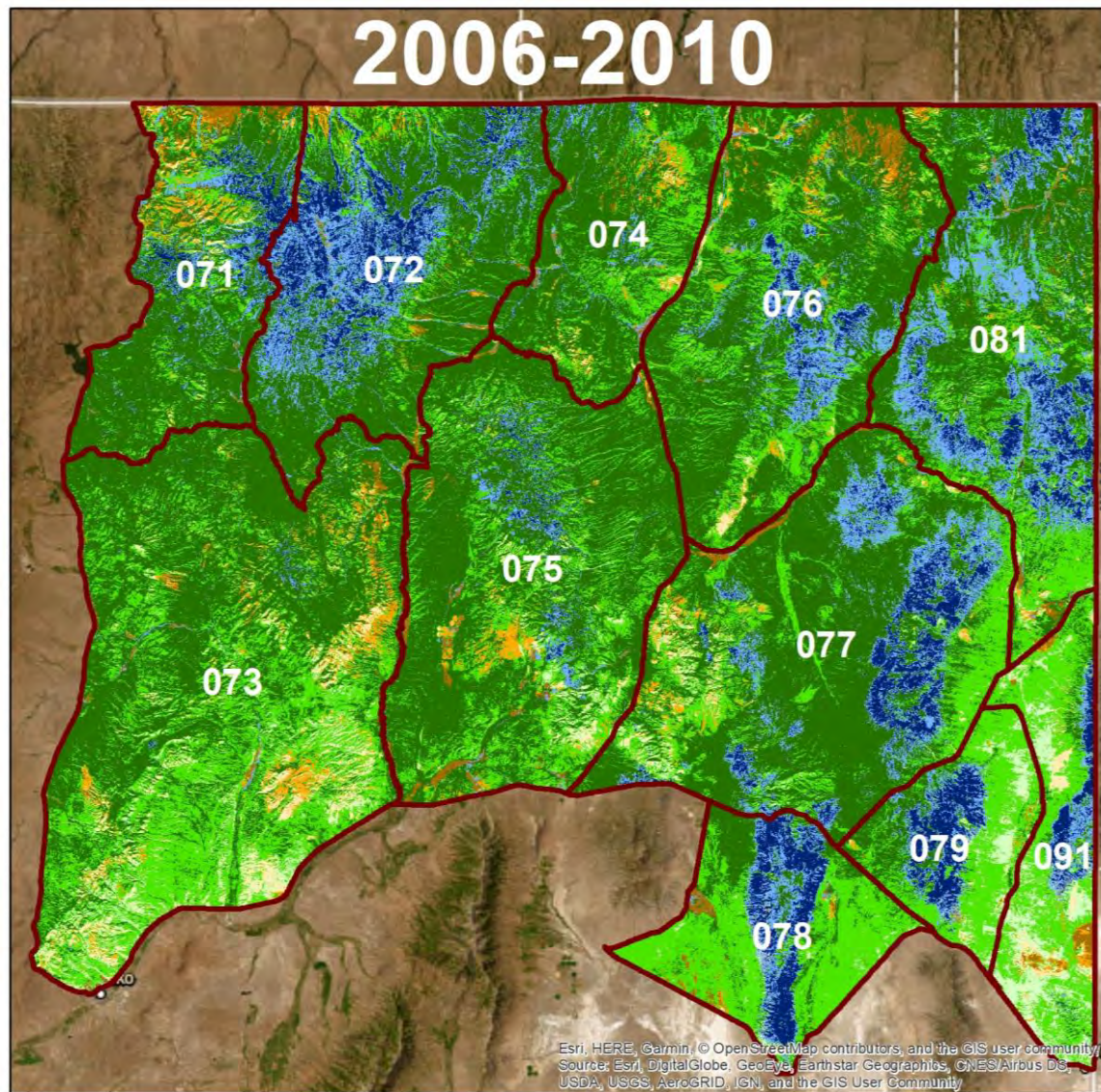
2016-2020



	Ann : Per Understory	Shrub Cover	Tree Cover
Shrubland	< 0.3; 0.3-1.0; ≥ 1.0	≥ 10%	< 5%
Grassland	< 0.3; 0.3-1.0; ≥ 1.0	< 10%	< 5%
Woodland	[all]	[all]	5-20% (low); >20% (high)



	Ann : Per Understory	Shrub Cover	Tree Cover
Shrubland	< 0.3; 0.3-1.0; ≥ 1.0	≥ 10%	< 5%
Grassland	< 0.3; 0.3-1.0; ≥ 1.0	< 10%	< 5%
Woodland	[all]	[all]	5-20% (low); >20% (high)

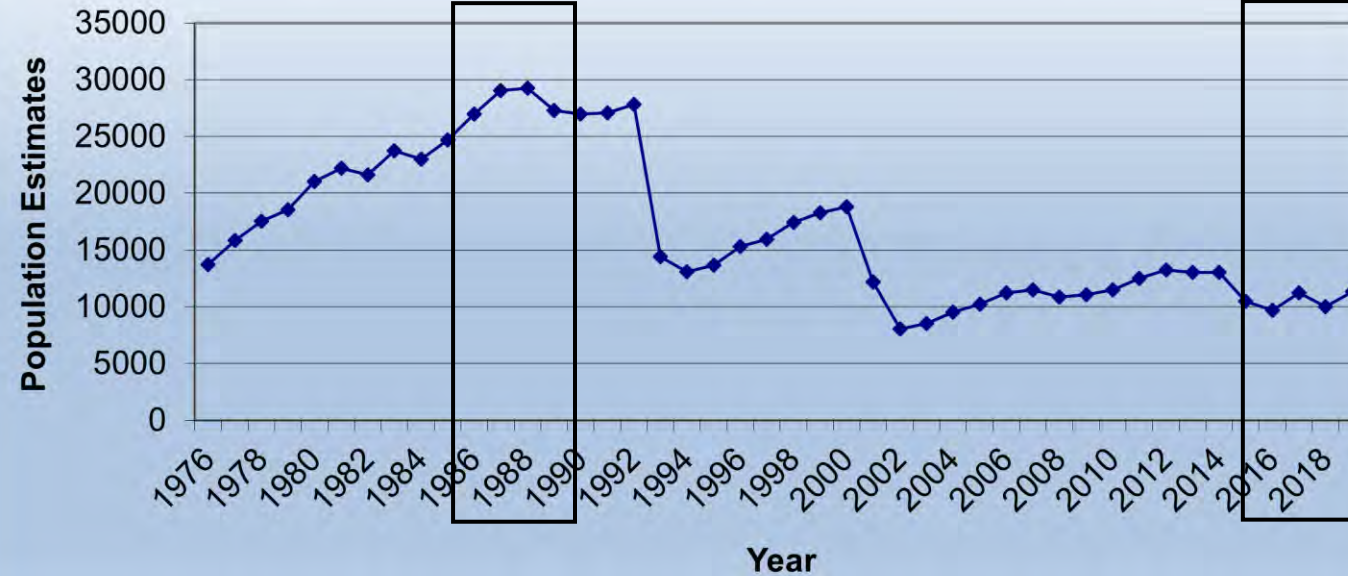


	Ann : Per Understory	Shrub Cover	Tree Cover
Shrubland	< 0.3; 0.3-1.0; ≥ 1.0	≥ 10%	< 5%
Grassland	< 0.3; 0.3-1.0; ≥ 1.0	< 10%	< 5%
Woodland	[all]	[all]	5-20% (low); >20% (high)

1986-1990

2016-2020

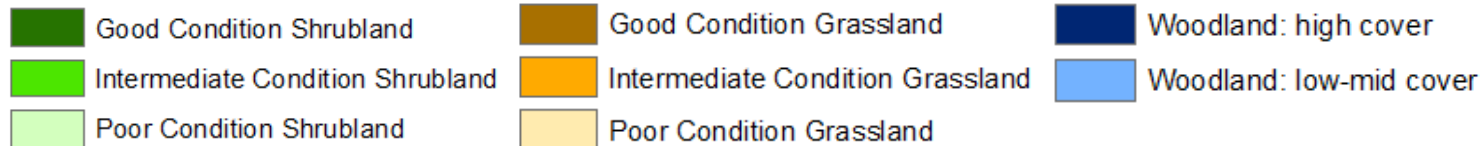
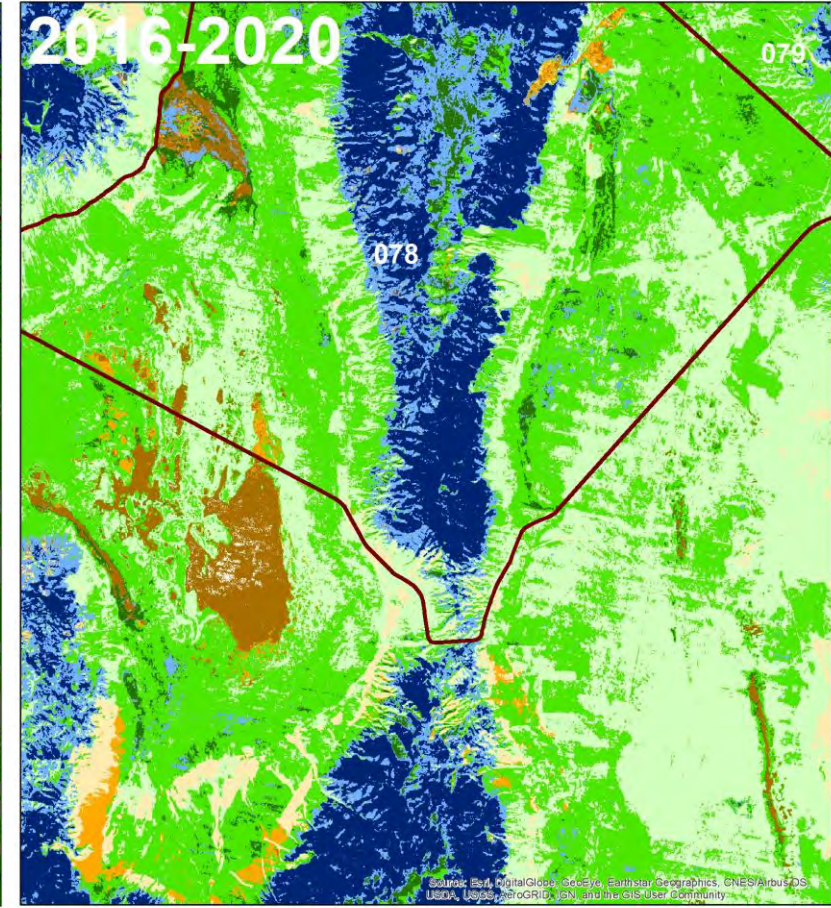
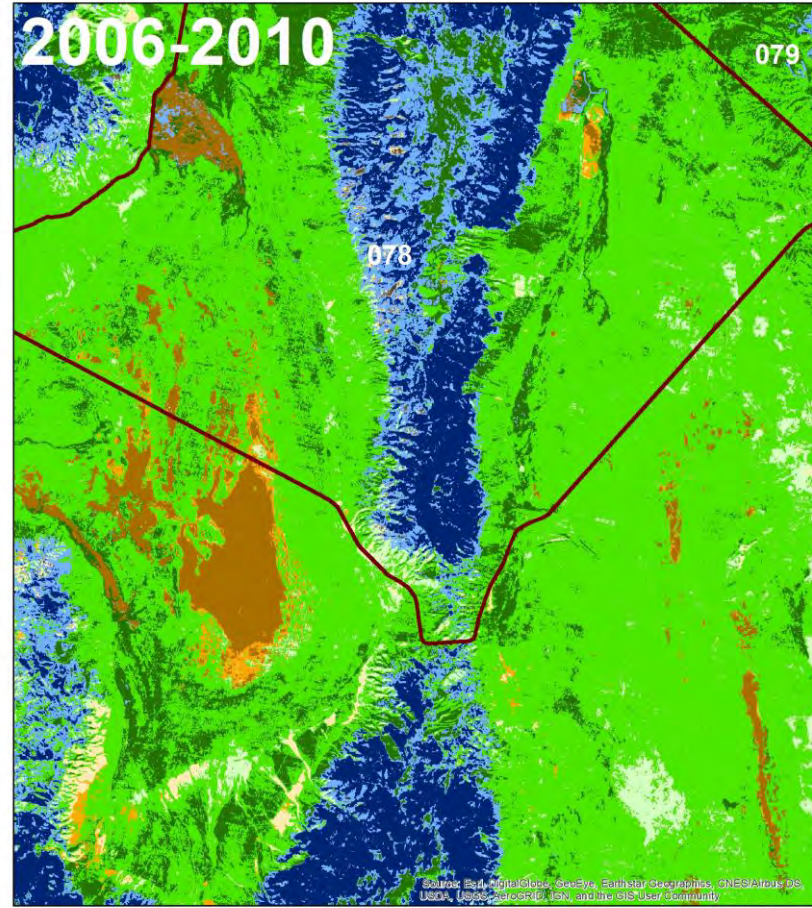
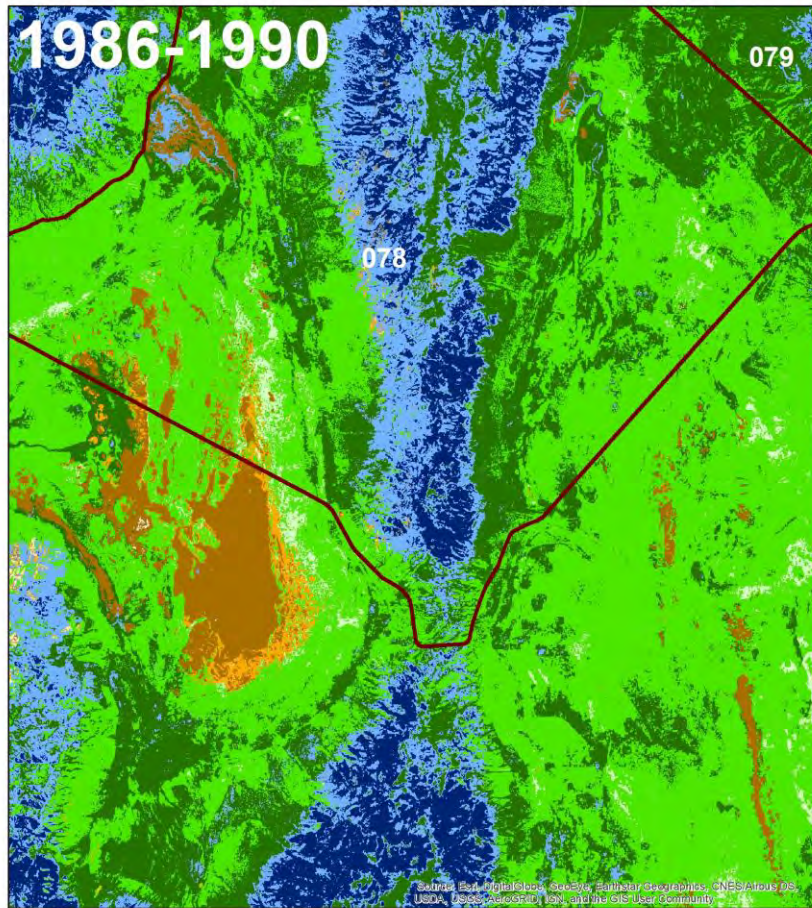
Area 7 Deer Population Estimates 1976-2019



- Good Condition Shrubland
- Intermediate Condition Shrubland
- Poor Condition Shrubland
- Good Condition Grassland
- Intermediate Condition Grassland
- Poor Condition Grassland
- Woodland: high cover
- Woodland: low-mid cover

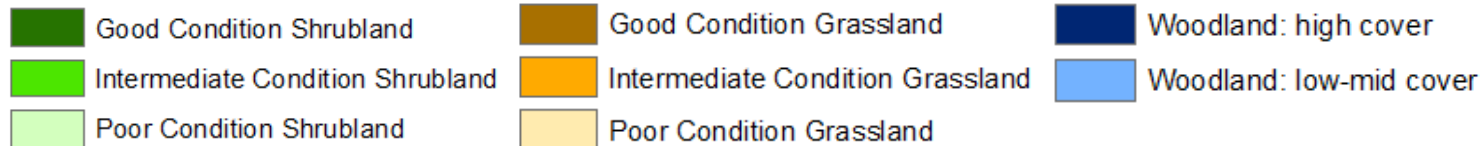
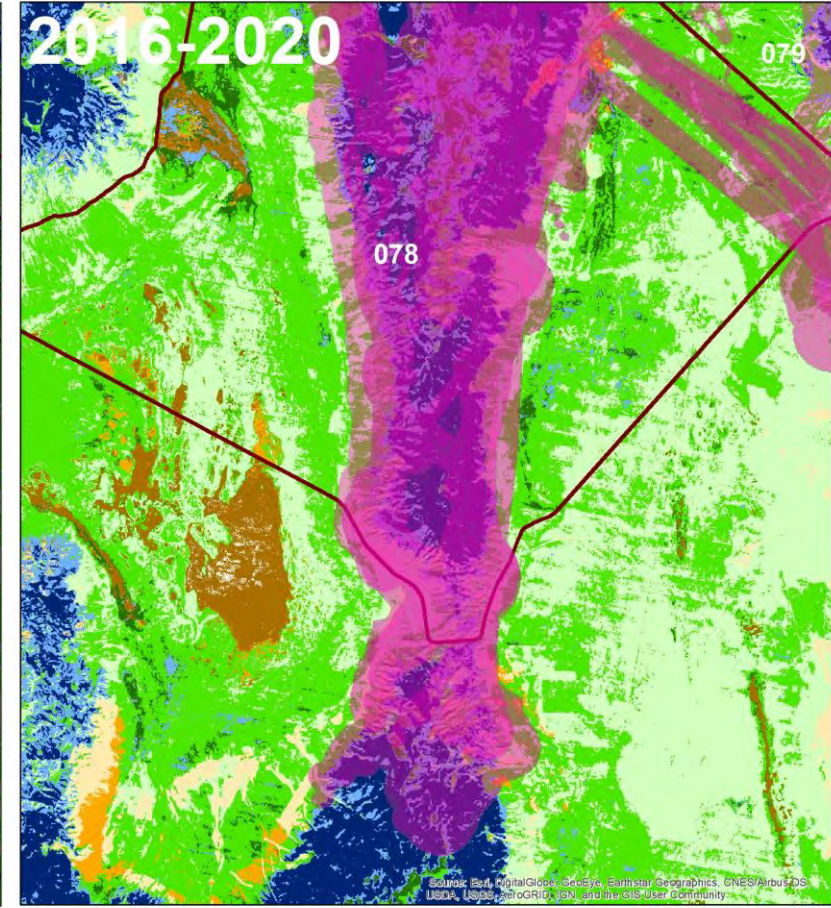
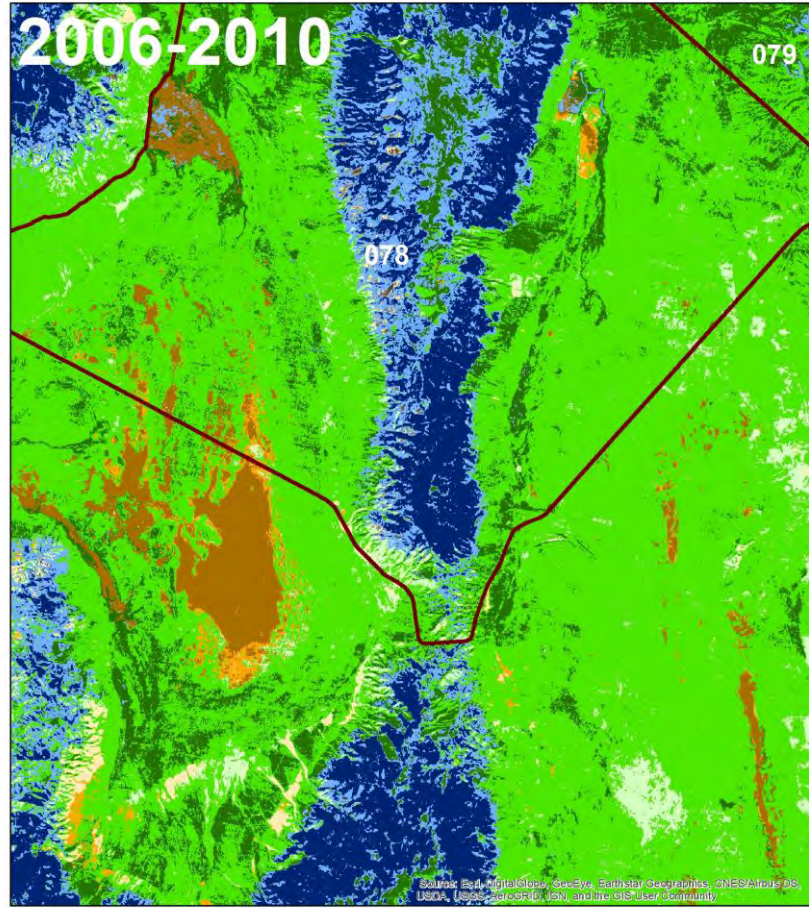
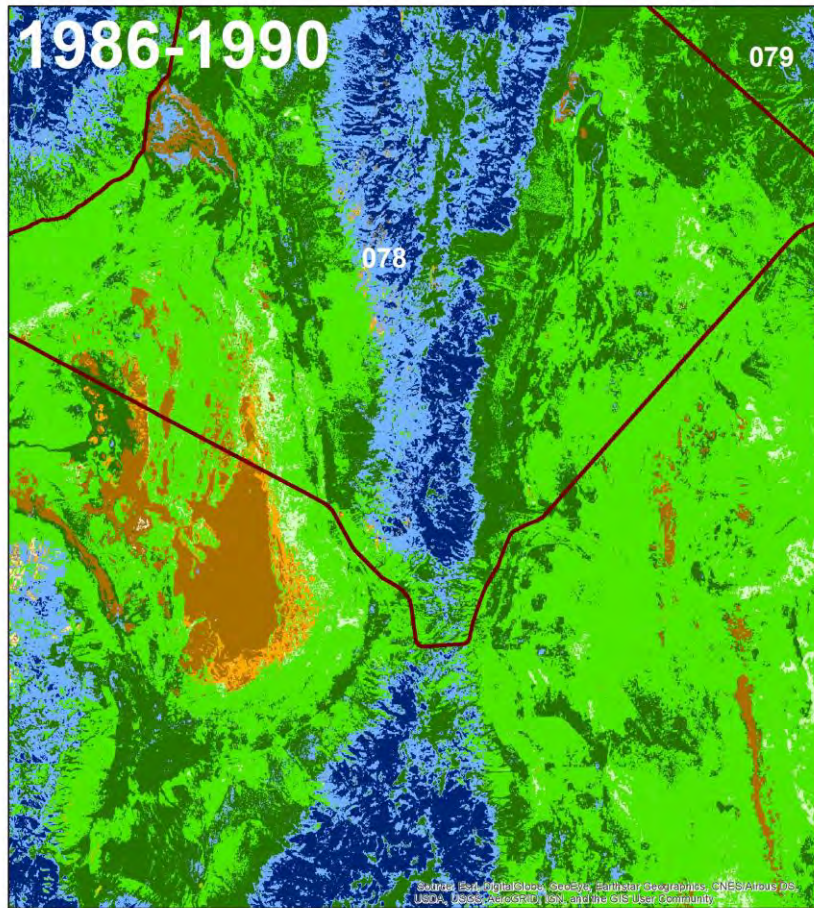
	Ann : Per Understory	Shrub Cover	Tree Cover
Shrubland	< 0.3; 0.3-1.0; ≥ 1.0	≥ 10%	< 5%
Grassland	< 0.3; 0.3-1.0; ≥ 1.0	< 10%	< 5%
Woodland	[all]	[all]	5-20% (low); >20% (high)

South Pequops (Winter Range)



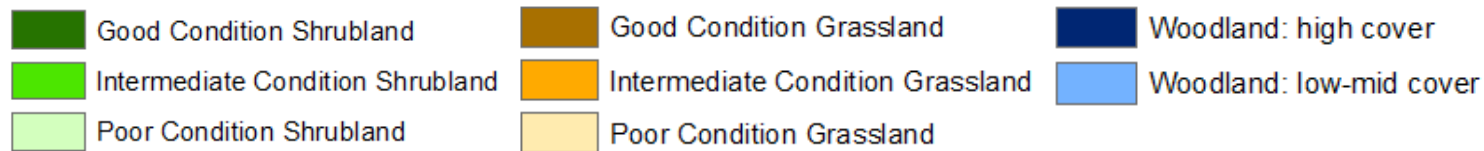
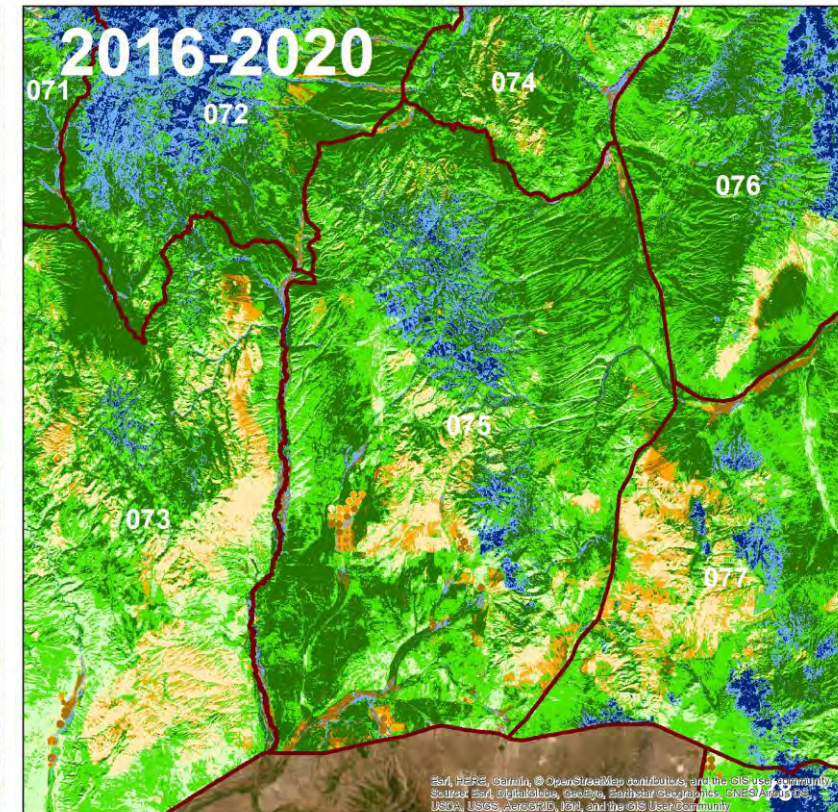
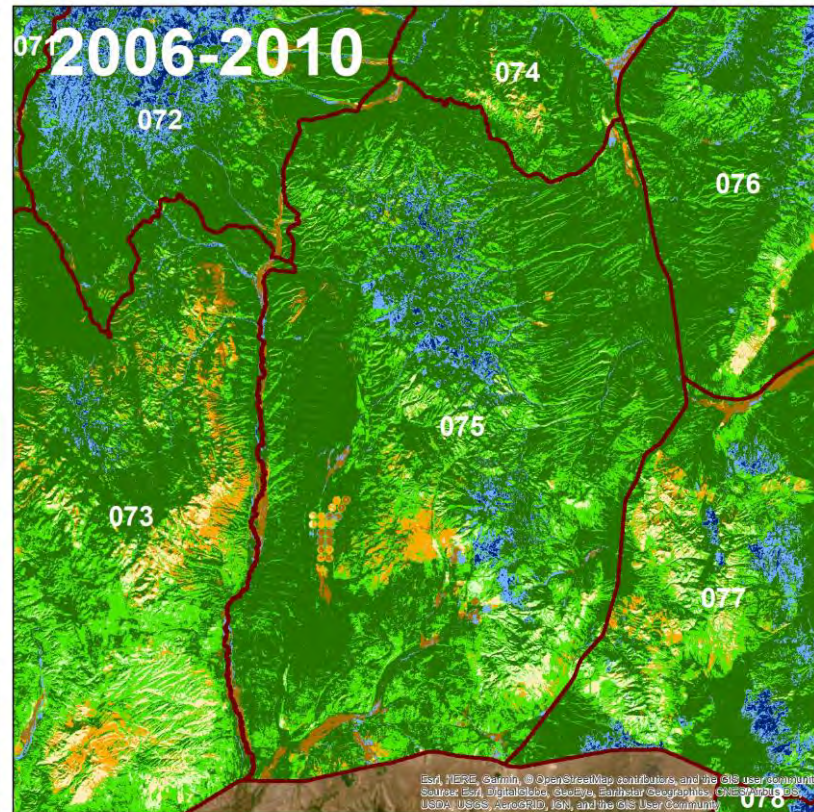
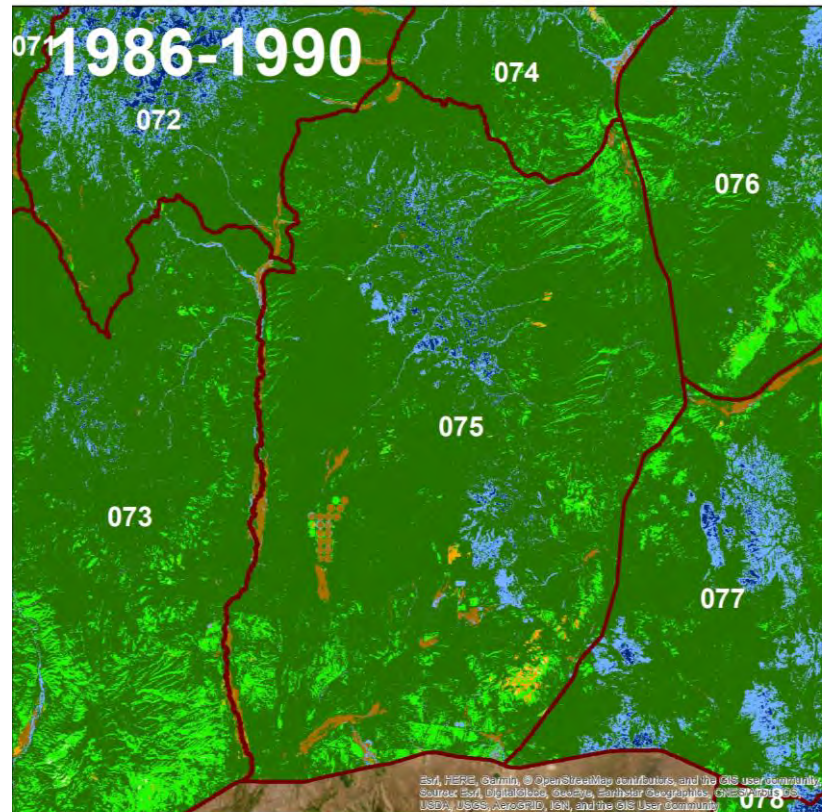
	Ann : Per Understory	Shrub Cover	Tree Cover
Shrubland	< 0.3; 0.3-1.0; ≥ 1.0	≥ 10%	< 5%
Grassland	< 0.3; 0.3-1.0; ≥ 1.0	< 10%	< 5%
Woodland	[all]	[all]	5-20% (low); >20% (high)

South Pequops (Winter Range)



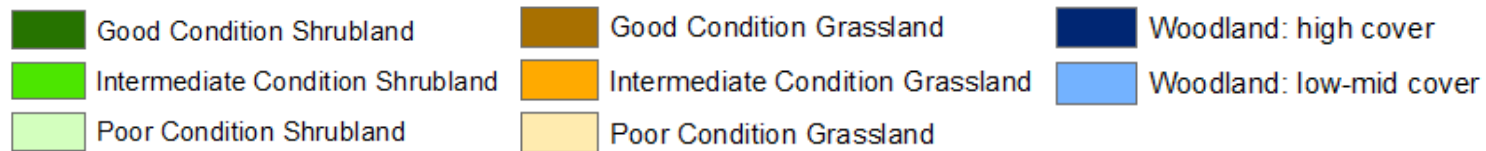
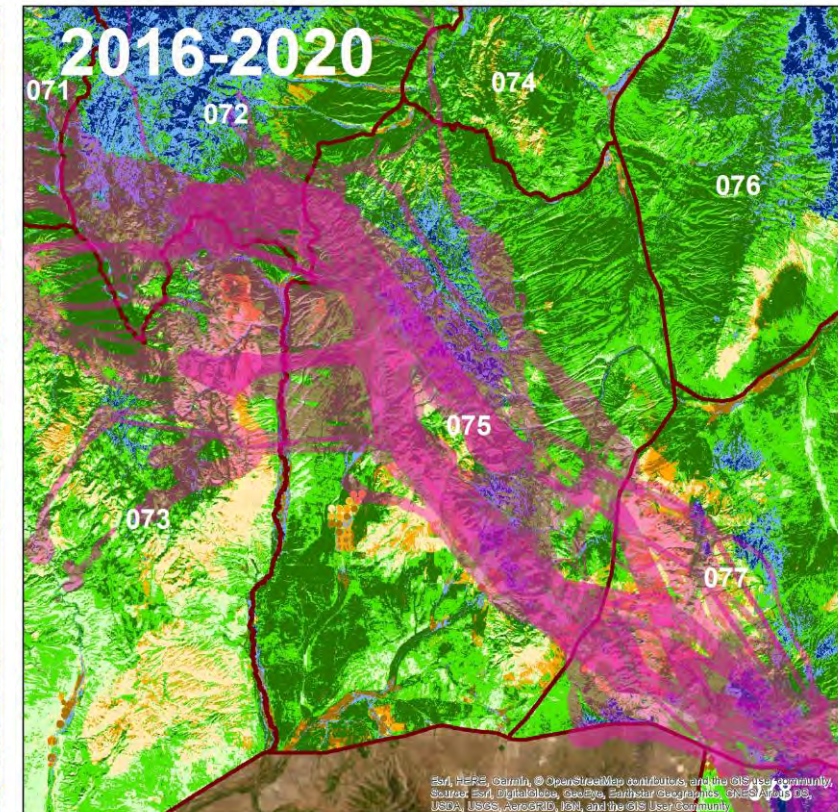
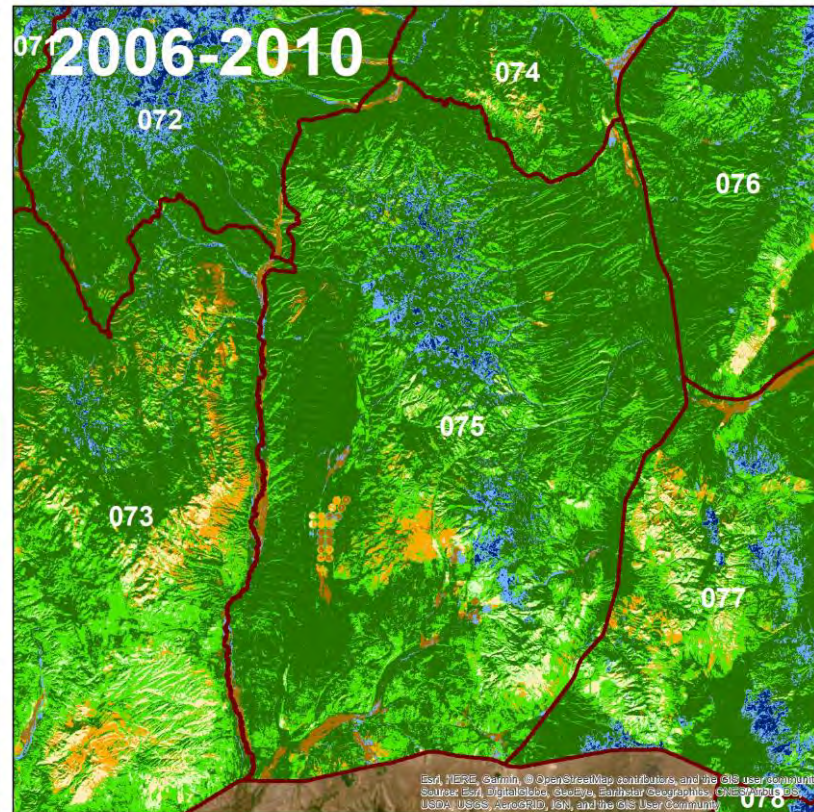
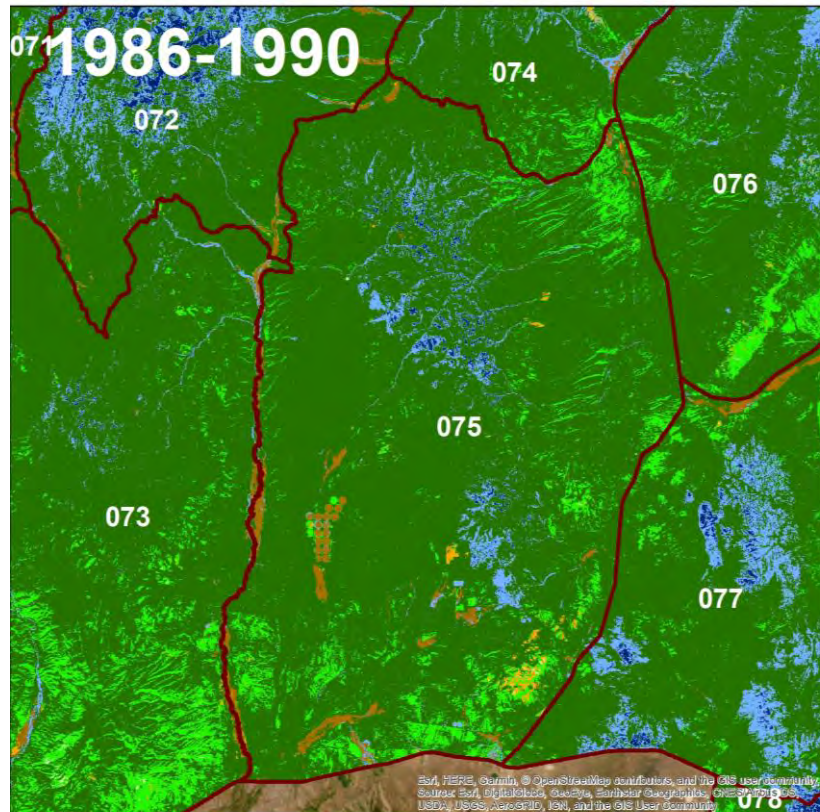
	Ann : Per Understory	Shrub Cover	Tree Cover
Shrubland	< 0.3; 0.3-1.0; ≥ 1.0	≥ 10%	< 5%
Grassland	< 0.3; 0.3-1.0; ≥ 1.0	< 10%	< 5%
Woodland	[all]	[all]	5-20% (low); >20% (high)

Degraded Shrubland (Migration Corridor)



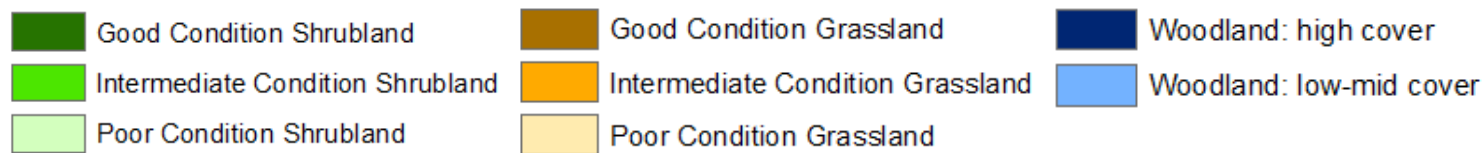
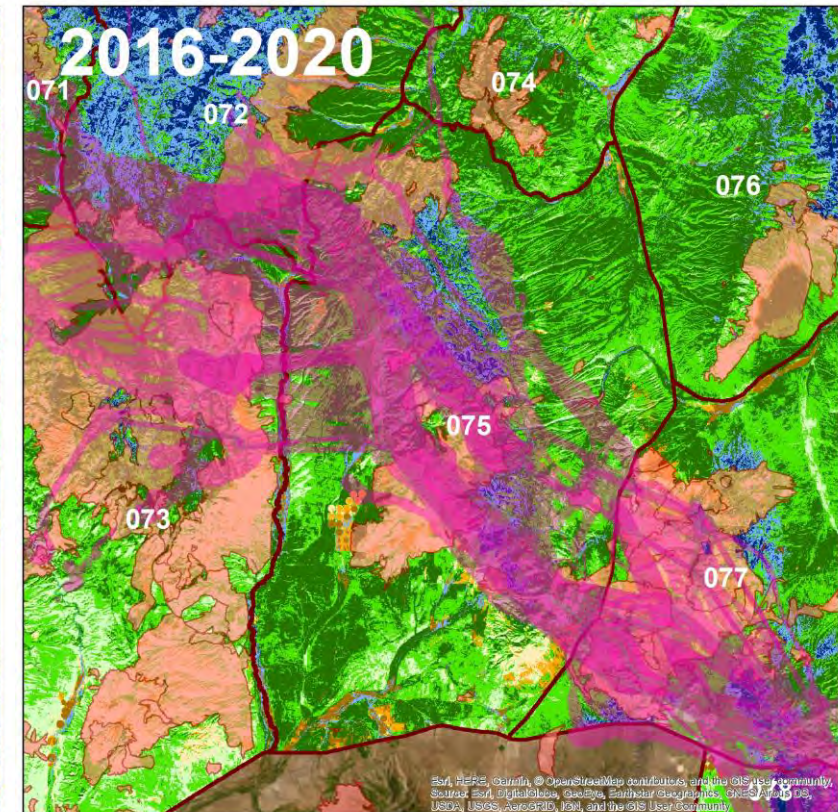
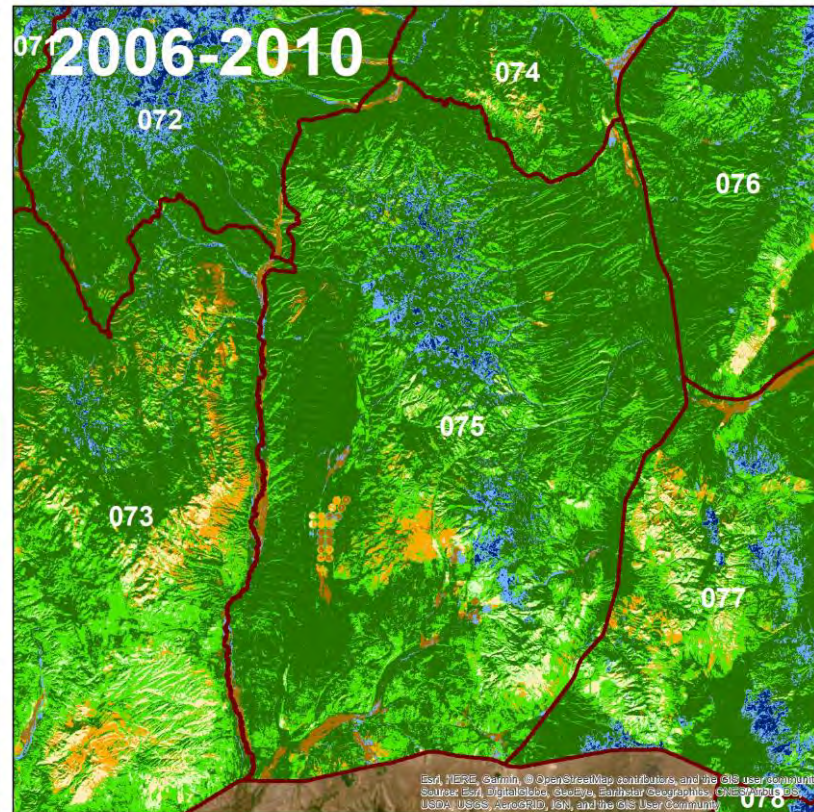
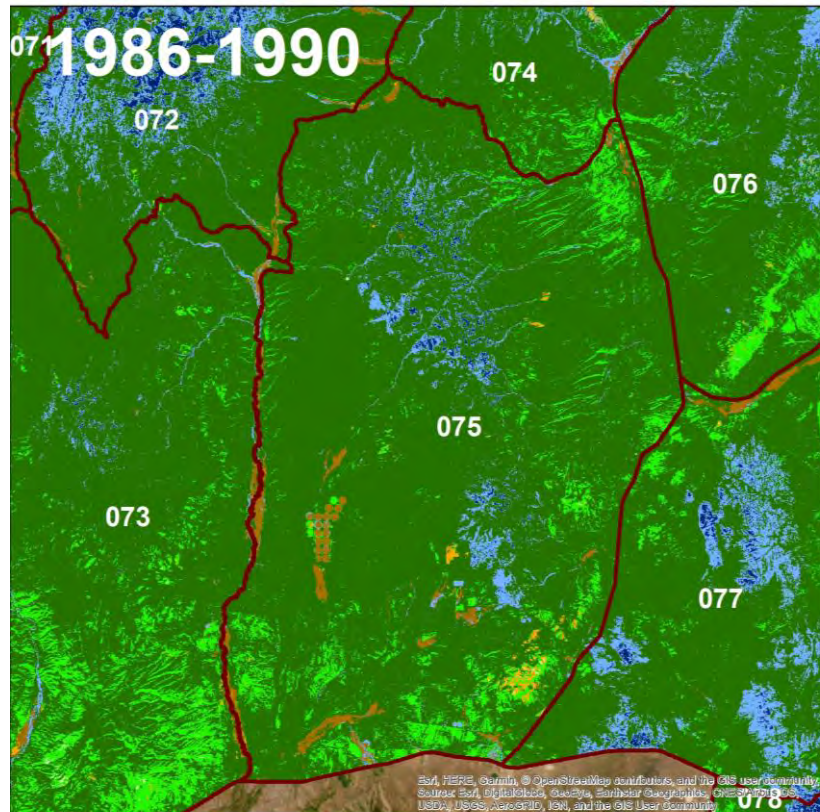
	Ann : Per Understory	Shrub Cover	Tree Cover
Shrubland	< 0.3; 0.3-1.0; ≥ 1.0	≥ 10%	< 5%
Grassland	< 0.3; 0.3-1.0; ≥ 1.0	< 10%	< 5%
Woodland	[all]	[all]	5-20% (low); >20% (high)

Degraded Shrubland (Migration Corridor)



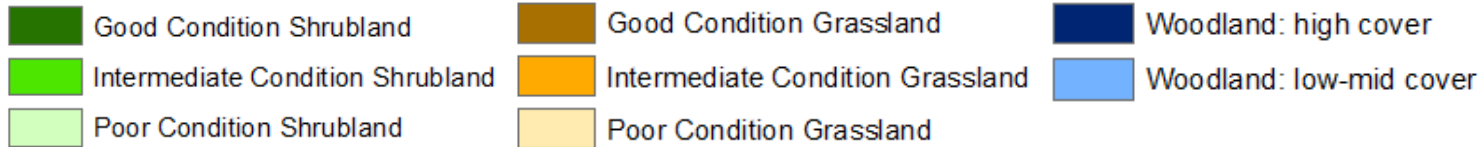
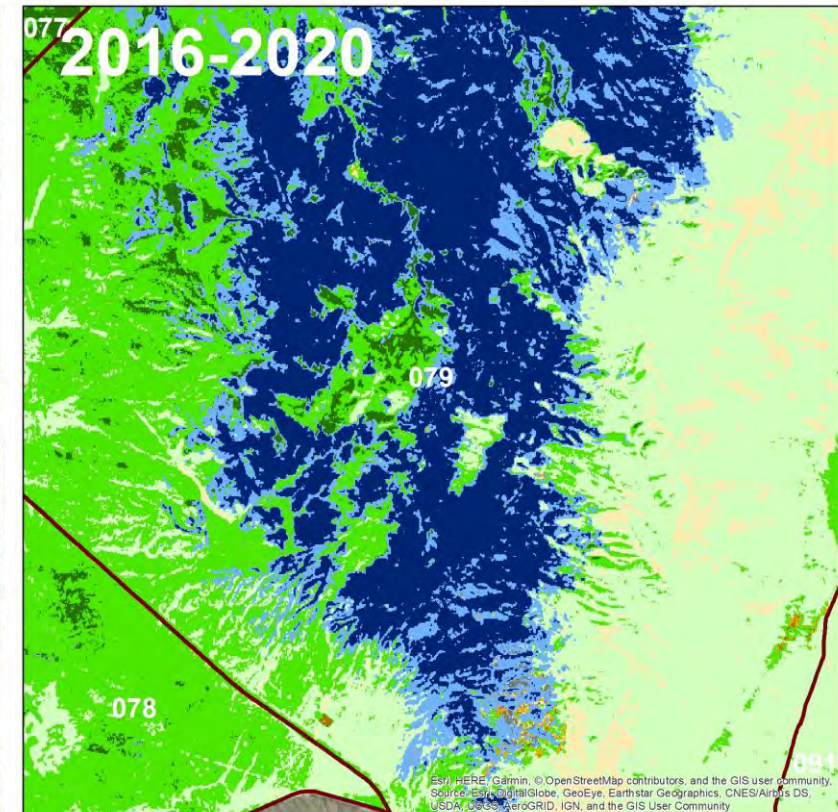
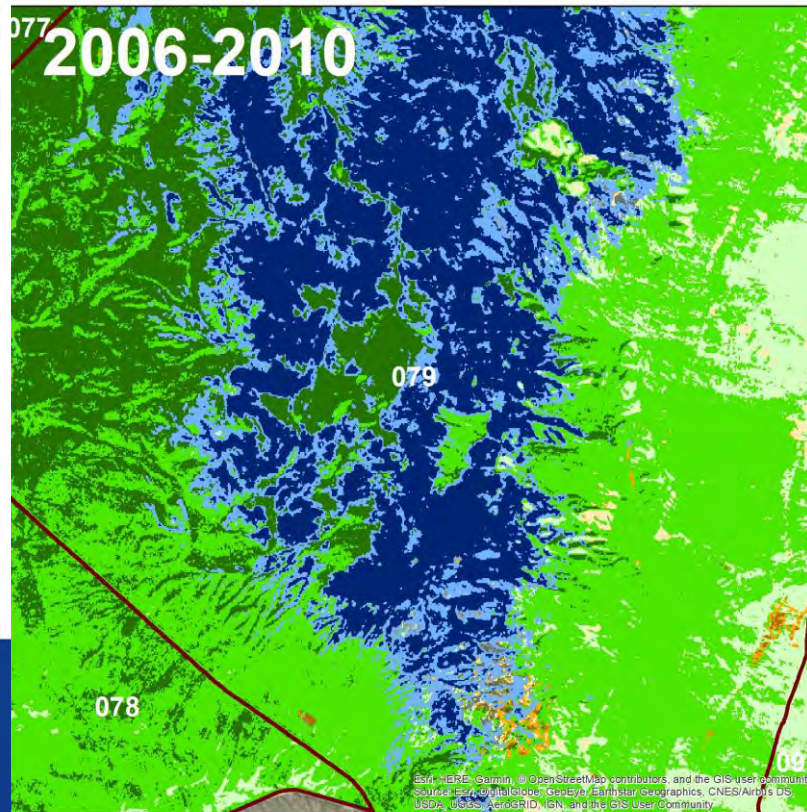
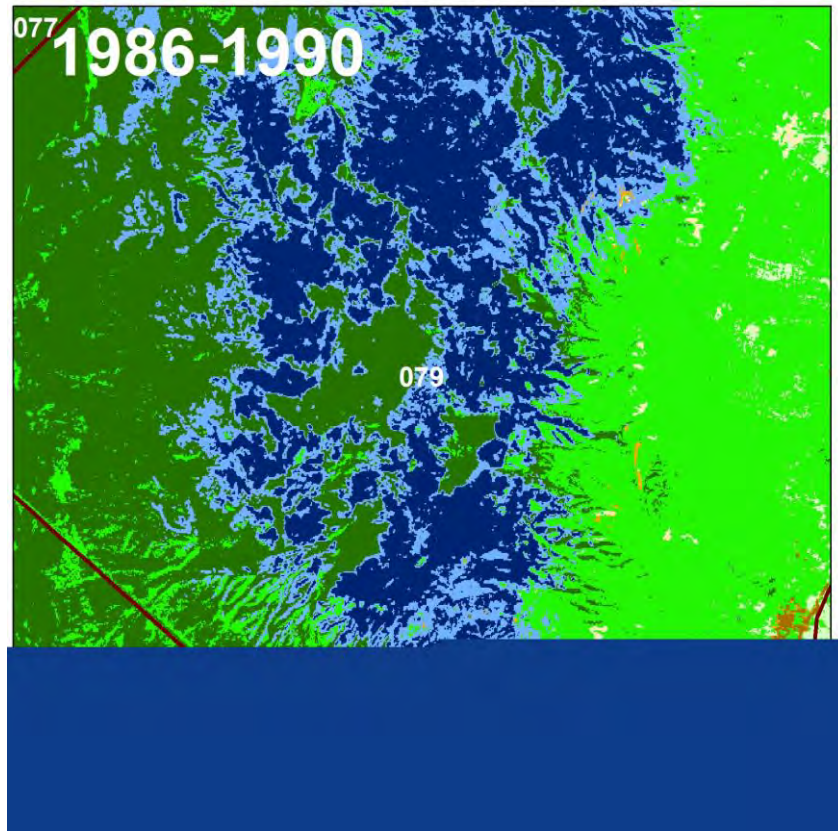
	Ann : Per Understory	Shrub Cover	Tree Cover
Shrubland	< 0.3; 0.3-1.0; ≥ 1.0	≥ 10%	< 5%
Grassland	< 0.3; 0.3-1.0; ≥ 1.0	< 10%	< 5%
Woodland	[all]	[all]	5-20% (low); >20% (high)

Degraded Shrubland (Migration Corridor)



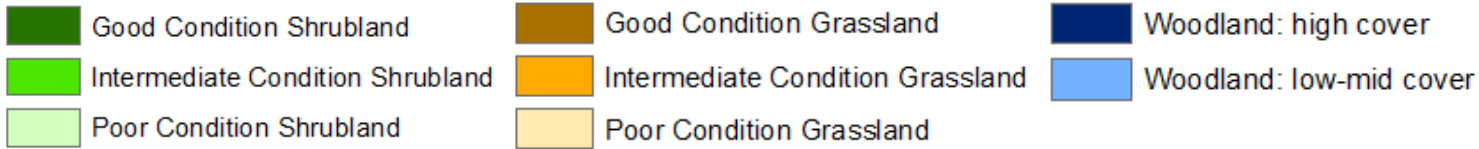
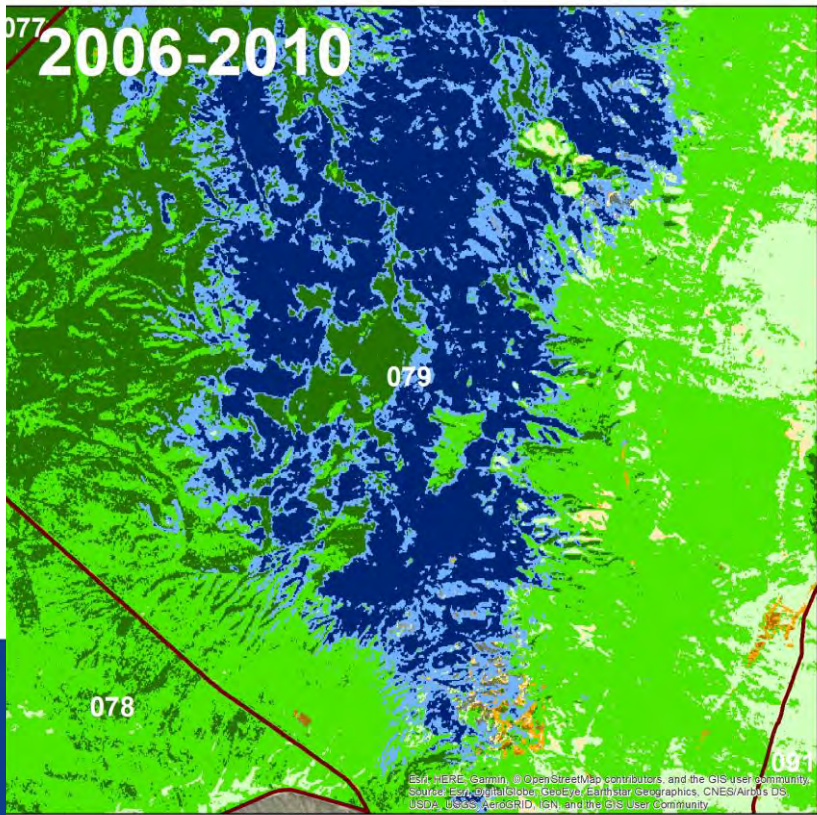
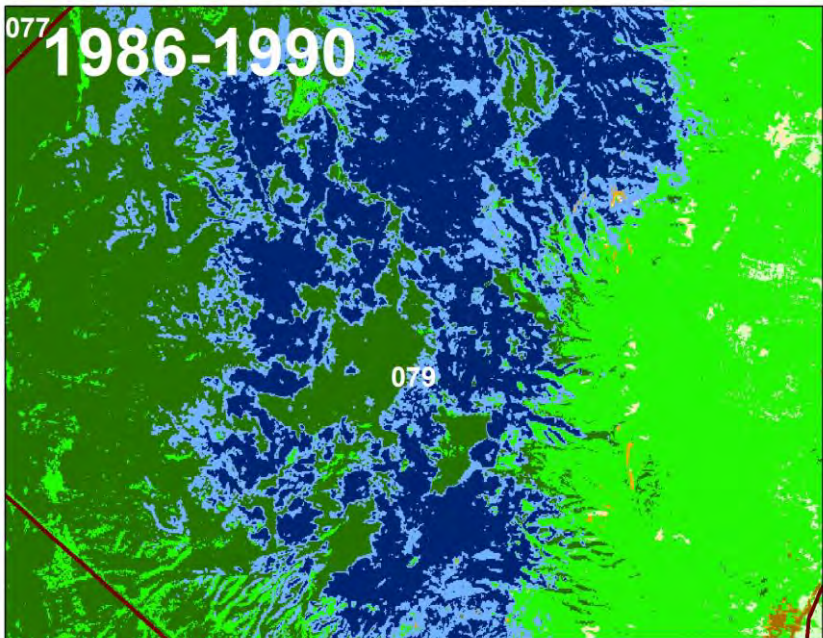
	Ann : Per Understory	Shrub Cover	Tree Cover
Shrubland	< 0.3; 0.3-1.0; ≥ 1.0	≥ 10%	< 5%
Grassland	< 0.3; 0.3-1.0; ≥ 1.0	< 10%	< 5%
Woodland	[all]	[all]	5-20% (low); >20% (high)

Collar & Elbow (Migration/Winter Range)



	Ann : Per Understory	Shrub Cover	Tree Cover
Shrubland	< 0.3; 0.3-1.0; ≥ 1.0	≥ 10%	< 5%
Grassland	< 0.3; 0.3-1.0; ≥ 1.0	< 10%	< 5%
Woodland	[all]	[all]	5-20% (low); >20% (high)

Collar & Elbow – Toano Mtns (Migration/Winter Range)

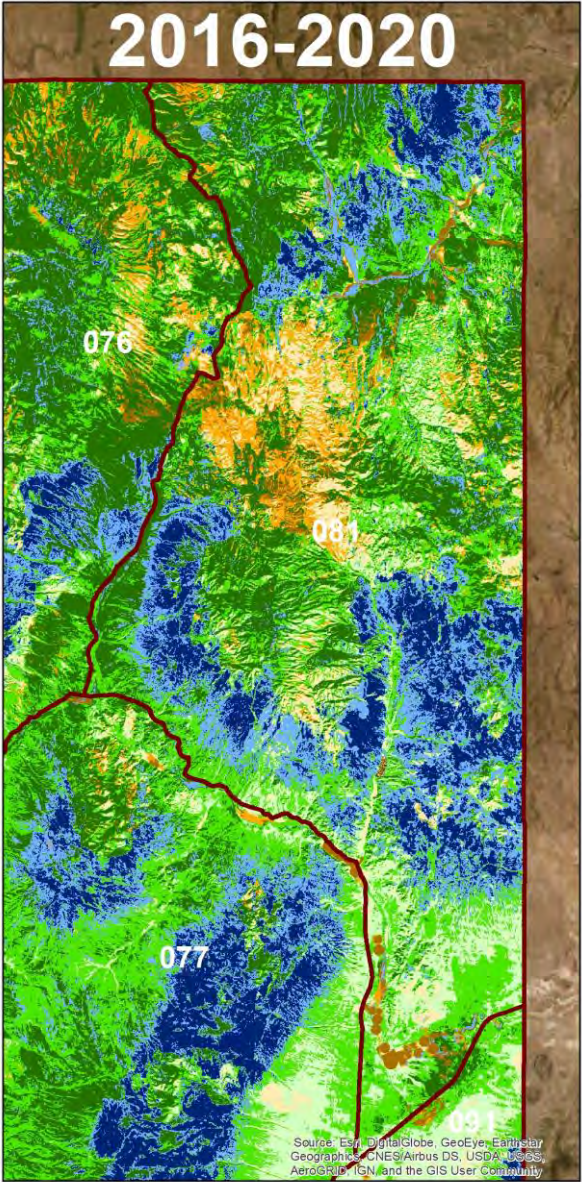
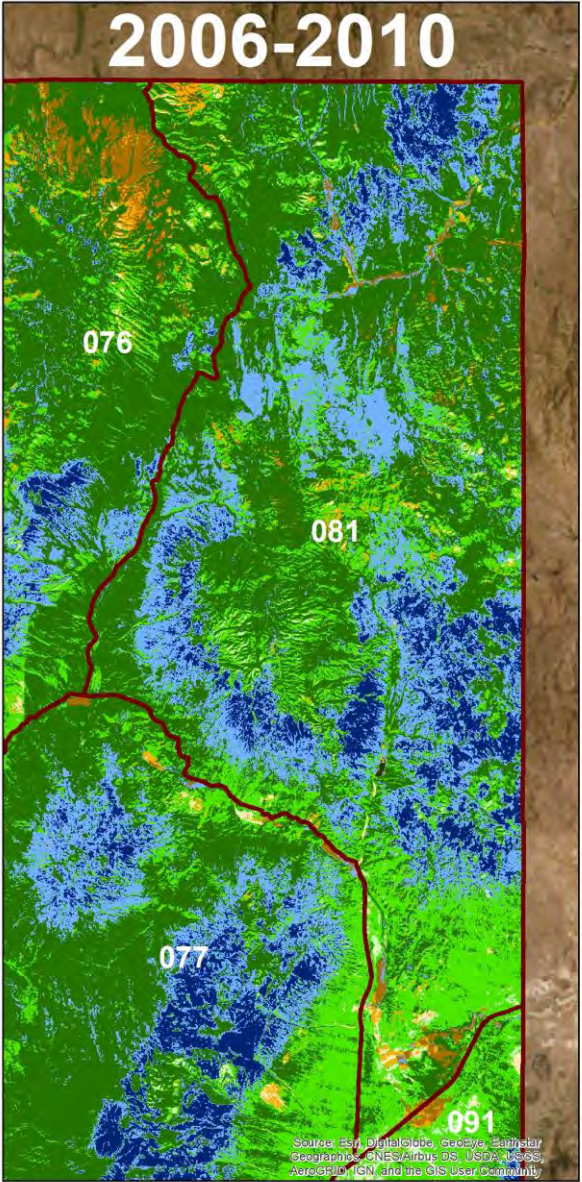


	Ann : Per Understory	Shrub Cover	Tree Cover
Shrubland	< 0.3; 0.3-1.0; ≥ 1.0	≥ 10%	< 5%
Grassland	< 0.3; 0.3-1.0; ≥ 1.0	< 10%	< 5%
Woodland	[all]	[all]	5-20% (low); >20% (high)

Unit 081

- Good Condition Shrubland
- Intermediate Condition Shrubland
- Poor Condition Shrubland
- Good Condition Grassland
- Intermediate Condition Grassland
- Poor Condition Grassland
- Woodland: high cover
- Woodland: low-mid cover

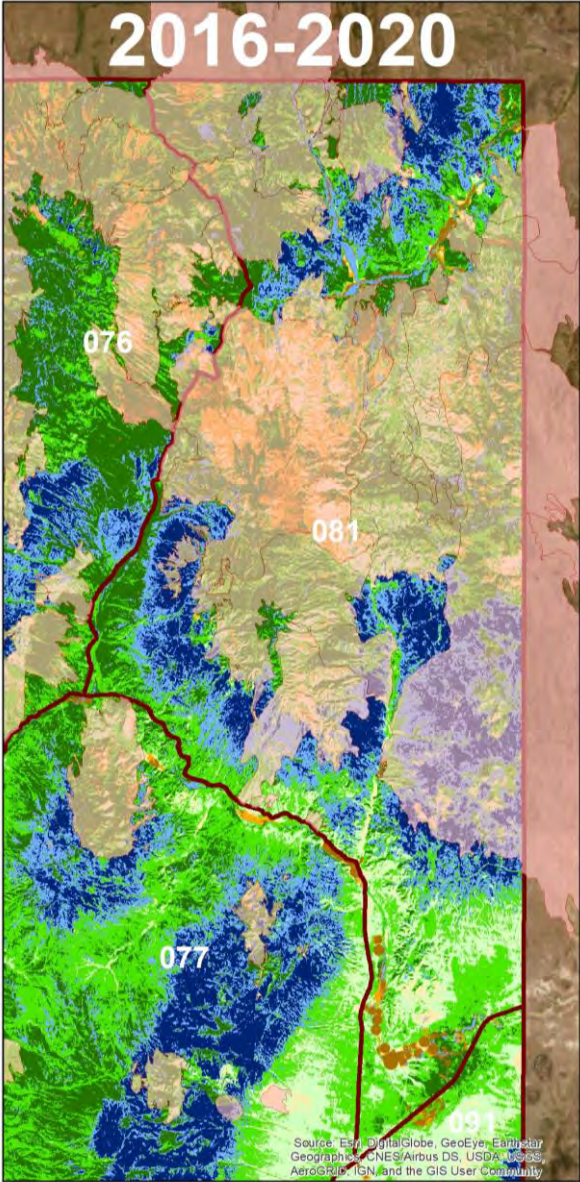
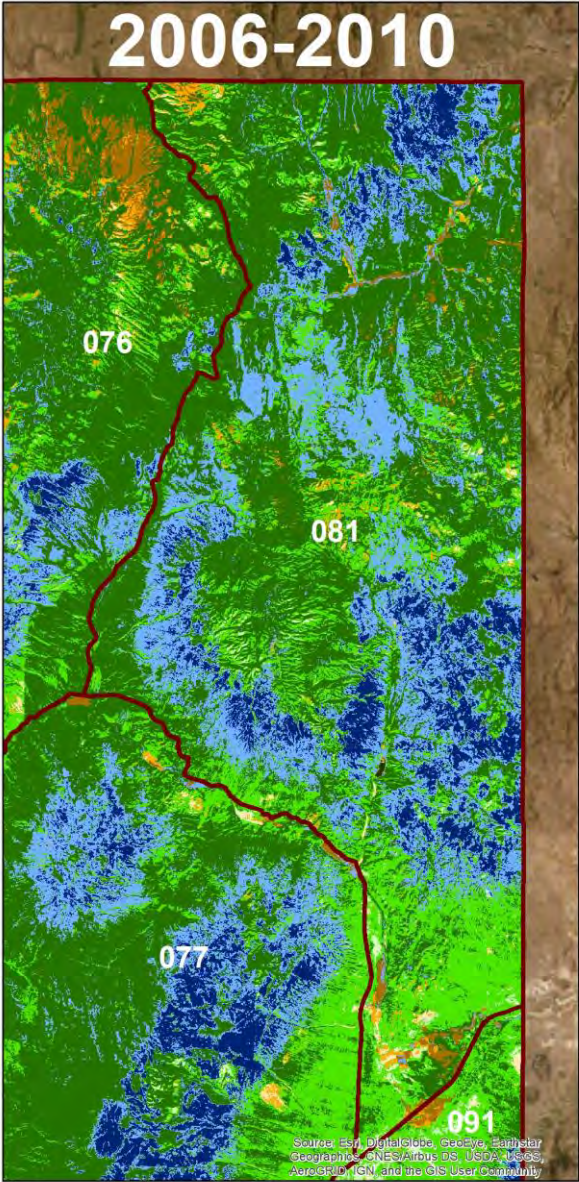
	Ann : Per Understory	Shrub Cover	Tree Cover
Shrubland	< 0.3; 0.3-1.0; ≥ 1.0	≥ 10%	< 5%
Grassland	< 0.3; 0.3-1.0; ≥ 1.0	< 10%	< 5%
Woodland	[all]	[all]	5-20% (low); >20% (high)



Unit 081

- Good Condition Shrubland
- Intermediate Condition Shrubland
- Poor Condition Shrubland
- Good Condition Grassland
- Intermediate Condition Grassland
- Poor Condition Grassland
- Woodland: high cover
- Woodland: low-mid cover

	Ann : Per Understory	Shrub Cover	Tree Cover
Shrubland	< 0.3; 0.3-1.0; ≥ 1.0	≥ 10%	< 5%
Grassland	< 0.3; 0.3-1.0; ≥ 1.0	< 10%	< 5%
Woodland	[all]	[all]	5-20% (low); >20% (high)



2023 Field Trip

- New Projects?
- Unit 081-Goose Creek Fire
- Current Projects – Wildcat Volunteer Planting?
- Location
- Time Frame