

Subcommittee Members: Steve Marquez, Shane Boren,
Trent Gordon, Jake Rosevear, Gracian Uhalde, Jr.,
Justin Rozich, Cody Coombs, Matt Rajala

Staff to the Subcommittee: Josh Kirk
Madi Ellingwood

**Nevada Board of Wildlife Commissioners
Mule Deer Enhancement Oversight Committee
Mule Deer Enhancement Program Subcommittee
White Pine County; Management Area 13
Nevada Department of Wildlife
1218 Alpha Street
Ely, Nevada 89301**

Wednesday, May 10, 2023 / 6:00 p.m.

Meeting in person and also via [www.Zoom.us](https://www.zoom.us)

DRAFT Minutes

1. Call to Order – Department Representative

The meeting was called to order at 6:02 p.m.

In Attendance:

Shane Boren, Subcommittee Member
Trent Gordon, Subcommittee Member
Jake Rosevear, Subcommittee Member
Justin Rozich, Subcommittee Member
Matt Rajala, Subcommittee Member
Shane Rogers, Oversight Committee Member
Josh Kirk, Department Representative
Madi Ellingwood, Department Representative
Tom Donham, Department Representative

2. Approval of Agenda – For Possible Action

Subcommittee Member Justin Rozich motioned to approve the minutes.

Subcommittee Member Shane Boren seconded the motion.

The motion passed.

3. Approval of Minutes (August 24, 2022) – Department Representative – For Possible Action

Subcommittee Member Justin Rozich motioned to approve the minutes.

Subcommittee Member Jake Rosevear seconded the motion.

The motion passed.

4. *Member Announcements and Correspondence – Informational

No announcements were reported.

5. *Area 13 Mule Deer Herd Status – Department Representative – Informational

The Subcommittee discussed the status of the Area 13 mule deer herd. Department Representative Kirk presented an overview of the Management Area 13 herd. Data from aerial surveys, population modeling, and quota recommendations were summarized, as well as an in-depth look at space use and movement

data from recent radio collared deer. Historic and present-day habitat and climatic trends were summarized, specifically throughout White Pine, Nye, and Lincoln Counties. The team also discussed the Limiting Factors that were identified throughout Area 13.

6. **Area 13 Project Proposals – – Department Representative – Informational**

The Subcommittee discussed the Limiting Factor Ranking Sheet and the Needs Assessment Worksheet that was submitted last year. The Subcommittee agreed there is no change to the worksheets from last year. The 2022 Area 13 project proposals were discussed, and updates were given regarding their status. The Subcommittee discussed different avenues to get projects approved by the Oversight Committee as well as some potential project proposals and field trip locations.

7. **Public Comment**

No public comment was received.

8. **Future Subcommittee Meetings – For possible Action**

A future Subcommittee meeting was not scheduled. The next meeting will be a field trip to discuss the habitat conditions, important mule deer use of these locations, and potential project ideas. A poll will be sent out to the Department Representatives and Subcommittee Members to schedule a date and location soon.

The meeting adjourned at 7:30 p.m.

Mule Deer Enhancement Program

MA14

Introductions

- NDOW:

Josh Kirk – Game Biologist

Madi Ellingwood – Habitat Biologist

Tom Donham – Eastern Region Supervising Game Biologist

Caleb McAdoo - Eastern Region Supervising Habitat Biologist

- Team Members:

Trent Gordon – Eureka County

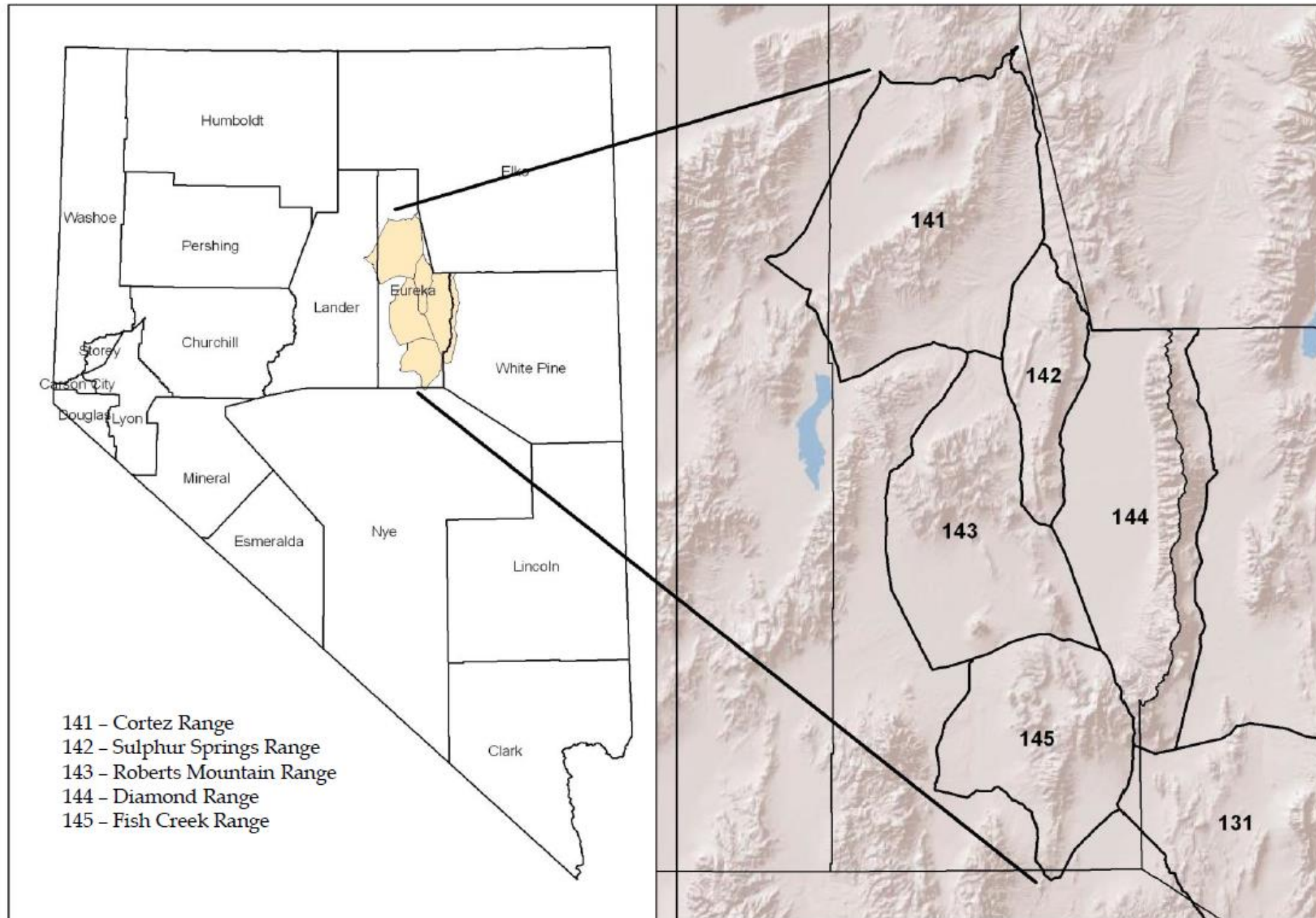
Bill Hicks – Eureka County

Jayme Halpin – Eureka County

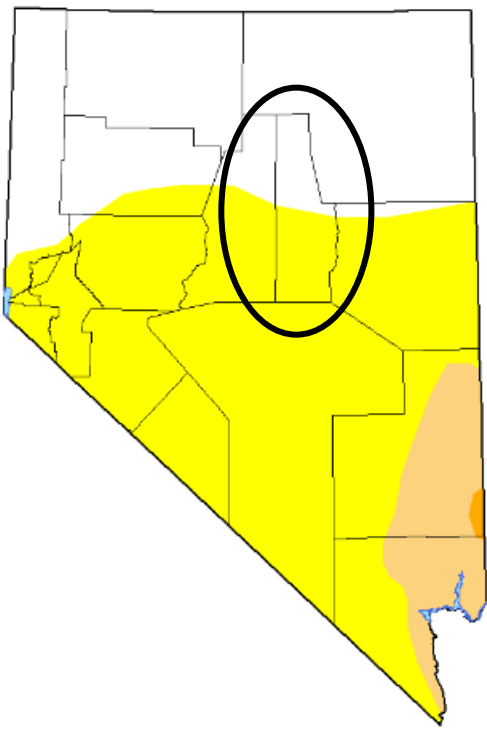
Anthony Miller– Eureka County

Jake Tibbitts – Eureka County

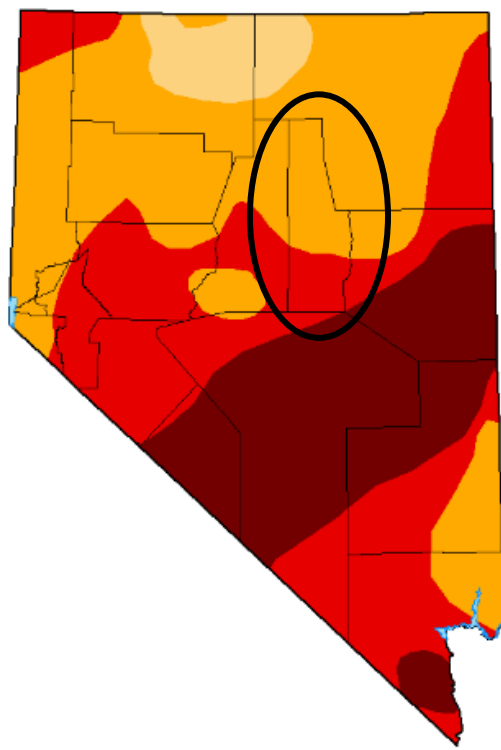
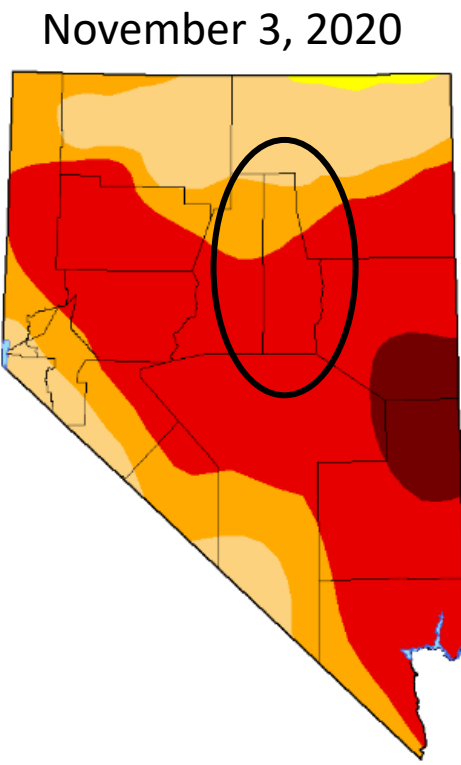
Area 14 Geographical Overview



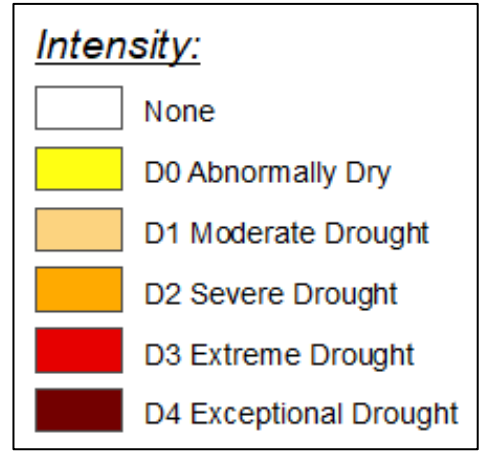
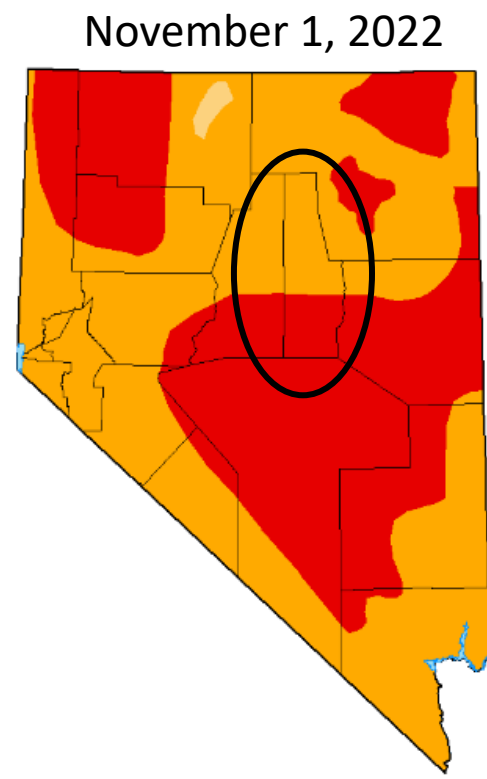
Climate



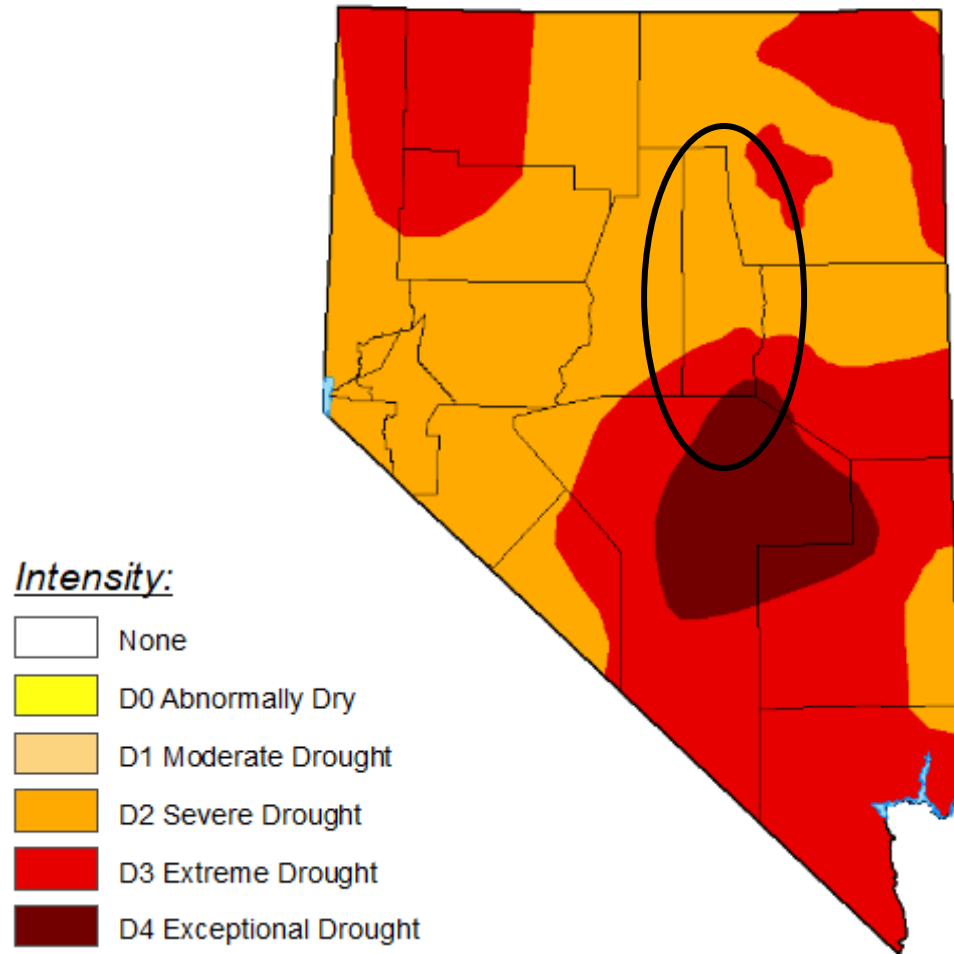
November 5, 2019



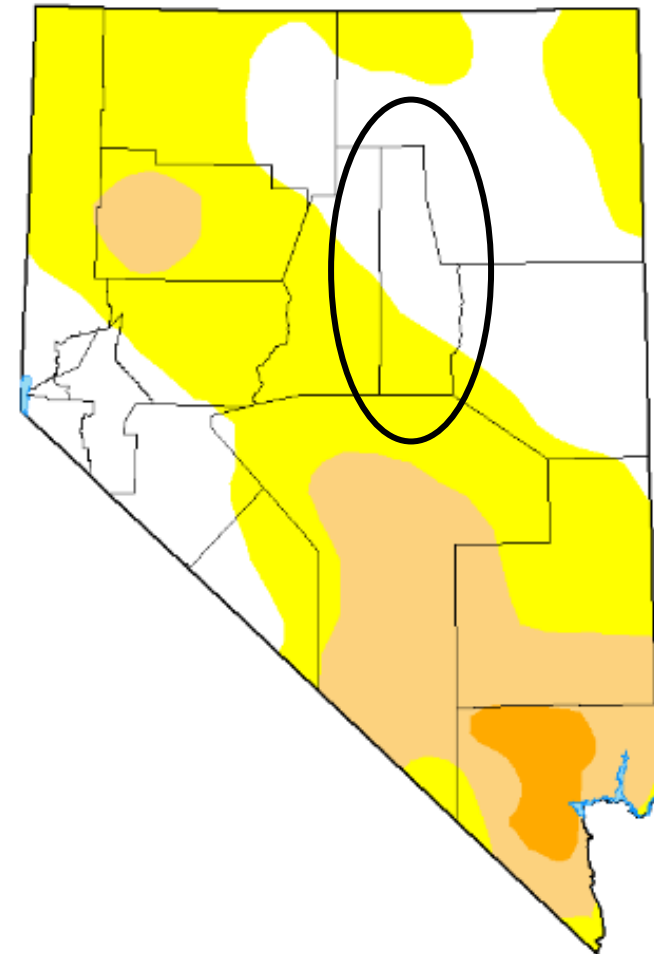
November 2, 2021



Climate



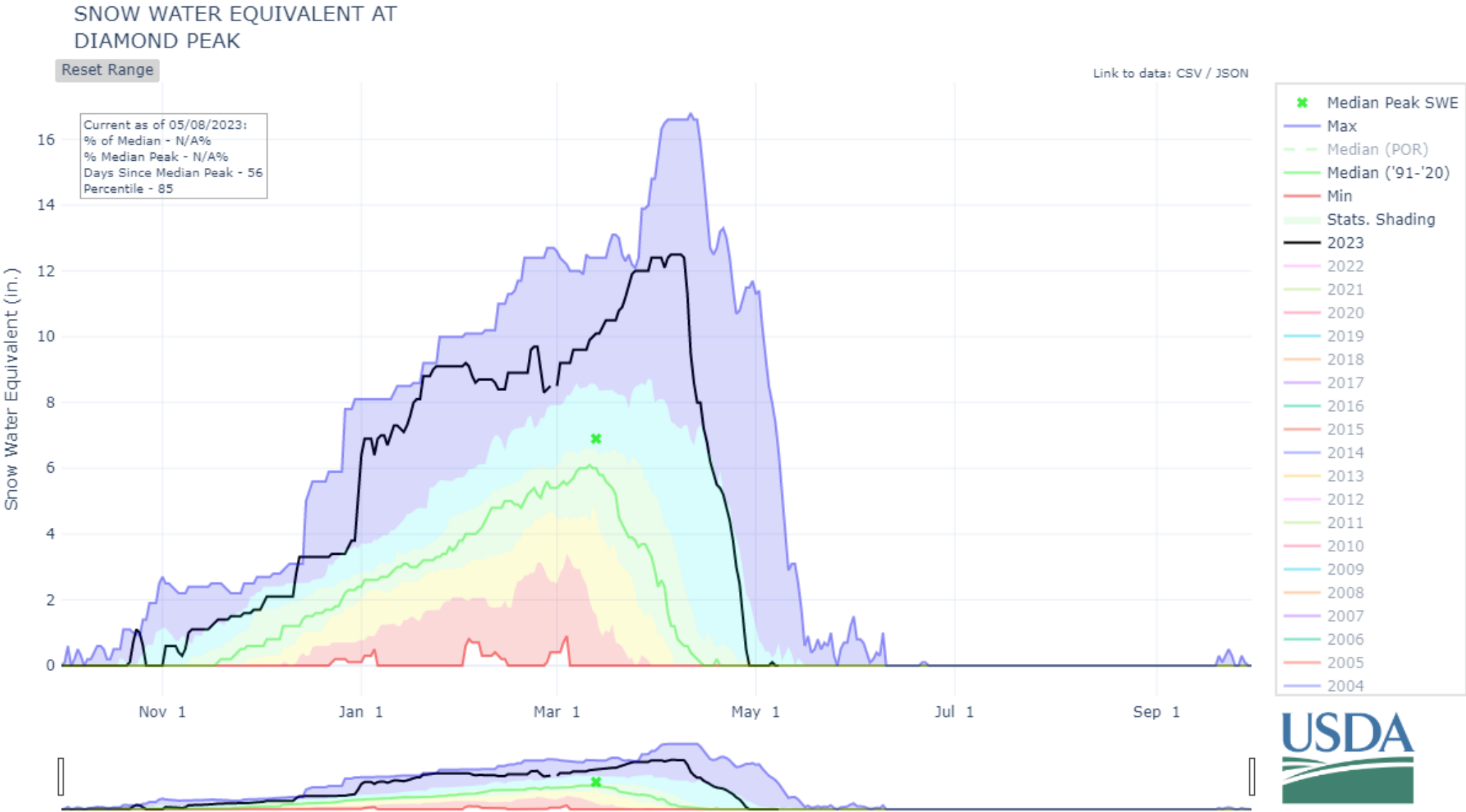
May 3, 2022



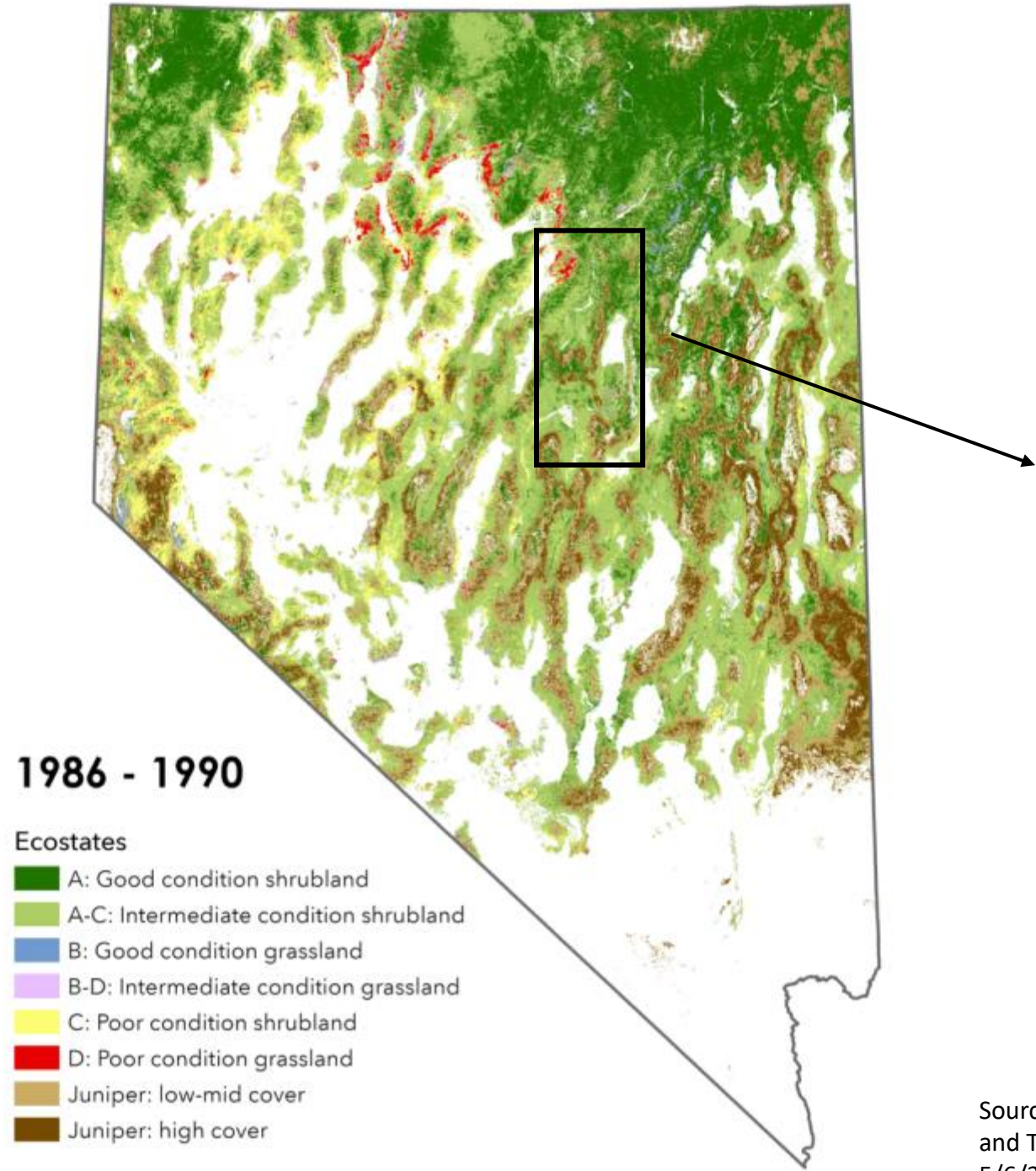
May 2, 2023

Source: NV Drought Monitor

Climate

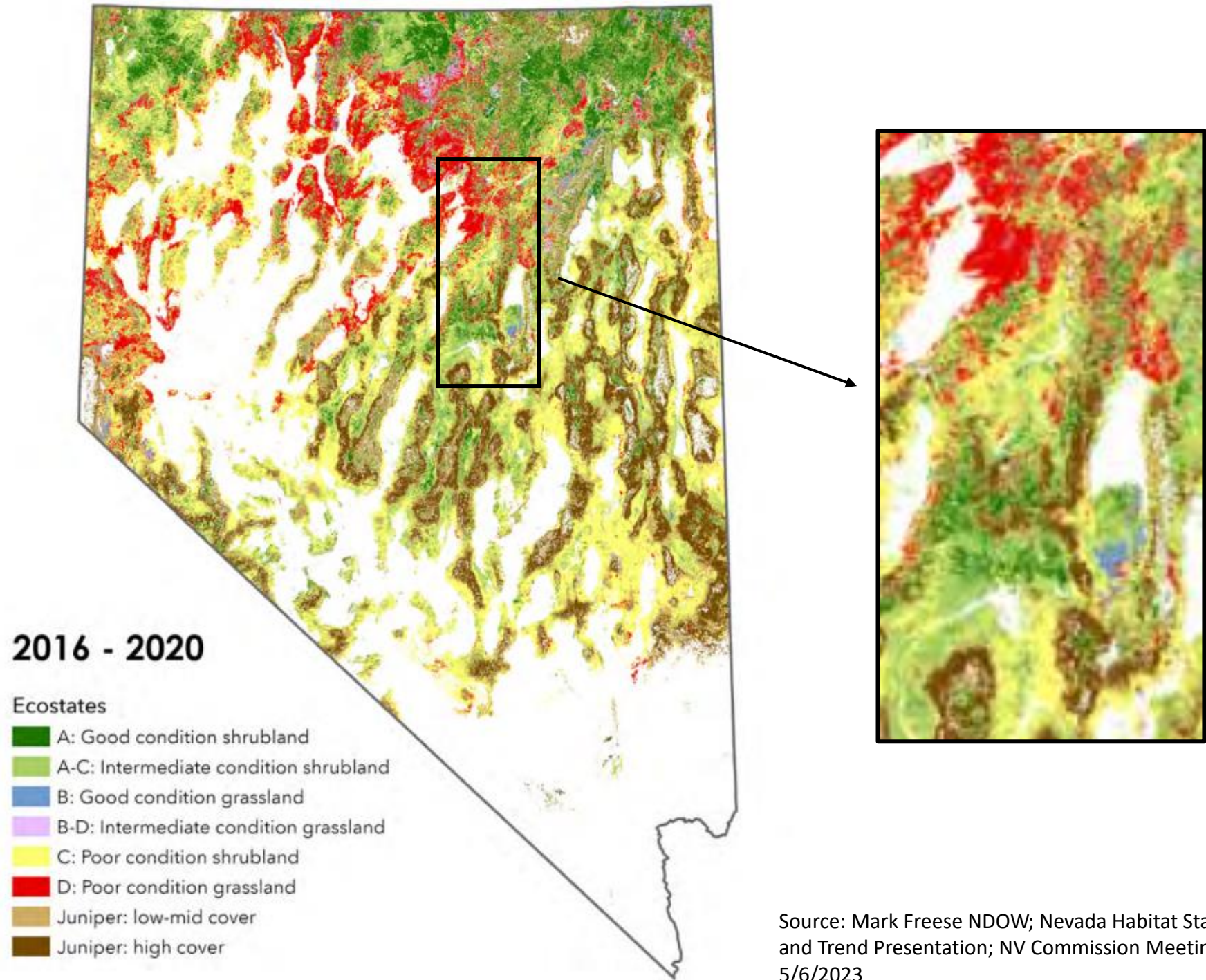


Habitat



Source: Mark Freese NDOW; Nevada Habitat Status and Trend Presentation; NV Commission Meeting 5/6/2023

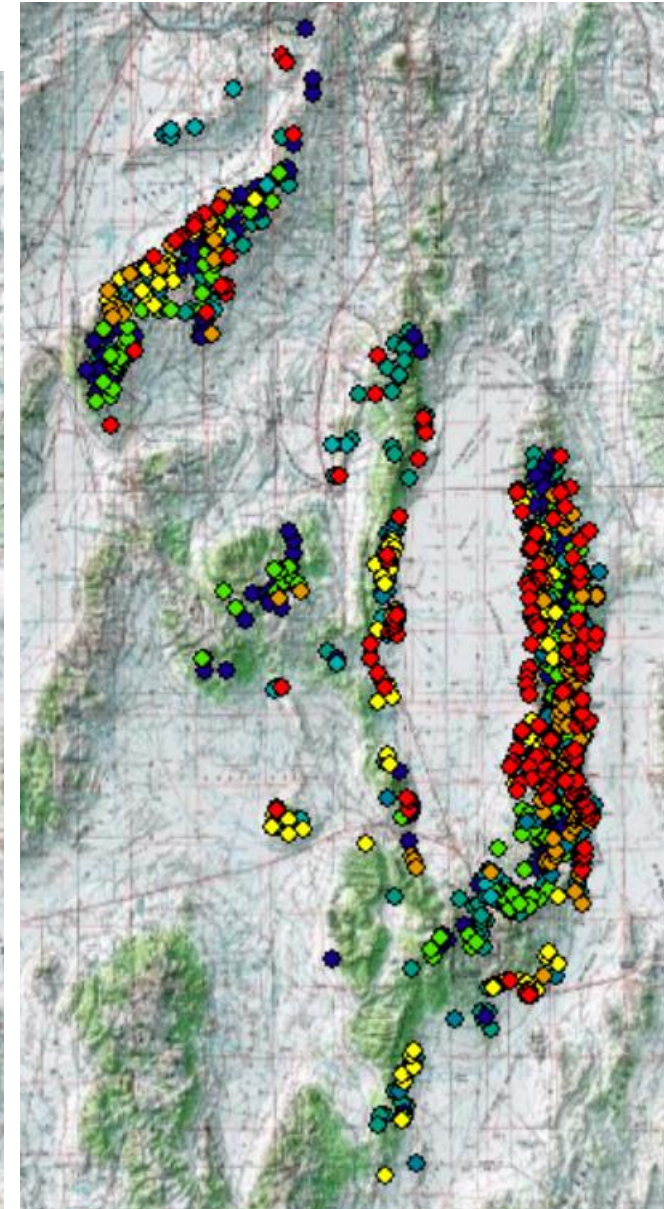
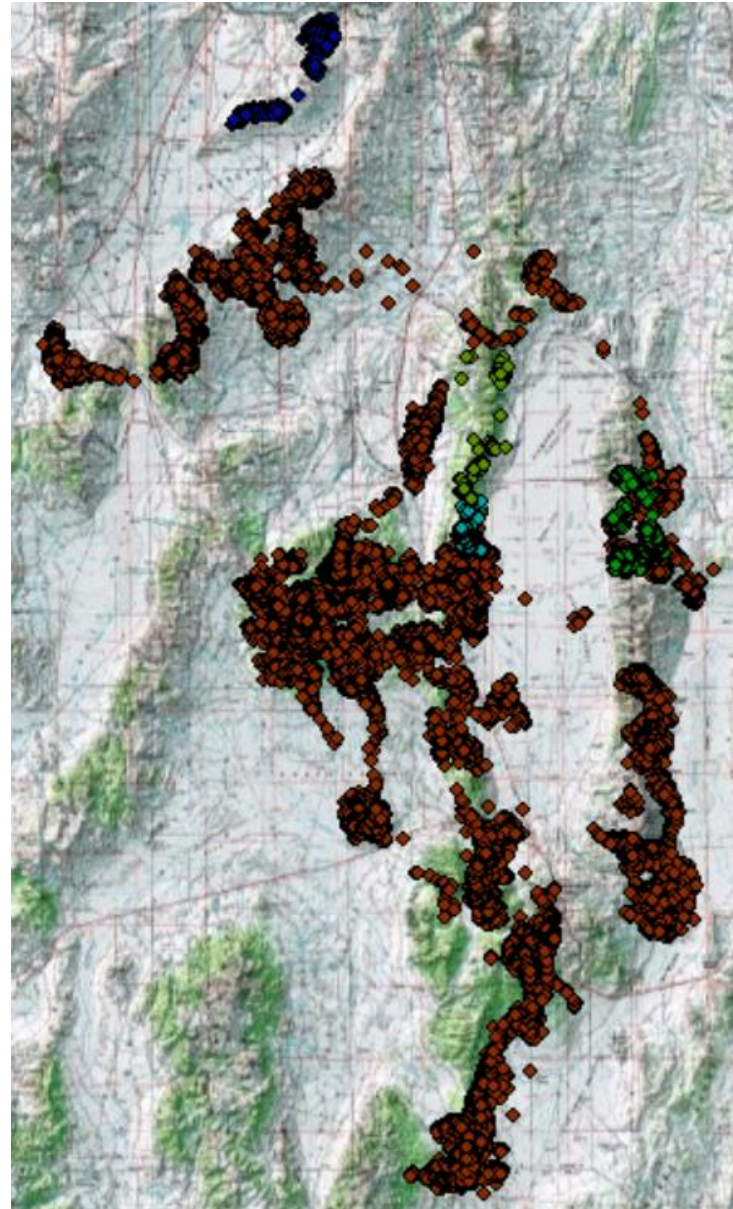
Habitat



Source: Mark Freese NDOW; Nevada Habitat Status and Trend Presentation; NV Commission Meeting 5/6/2023

Radio Collared Deer in MA14

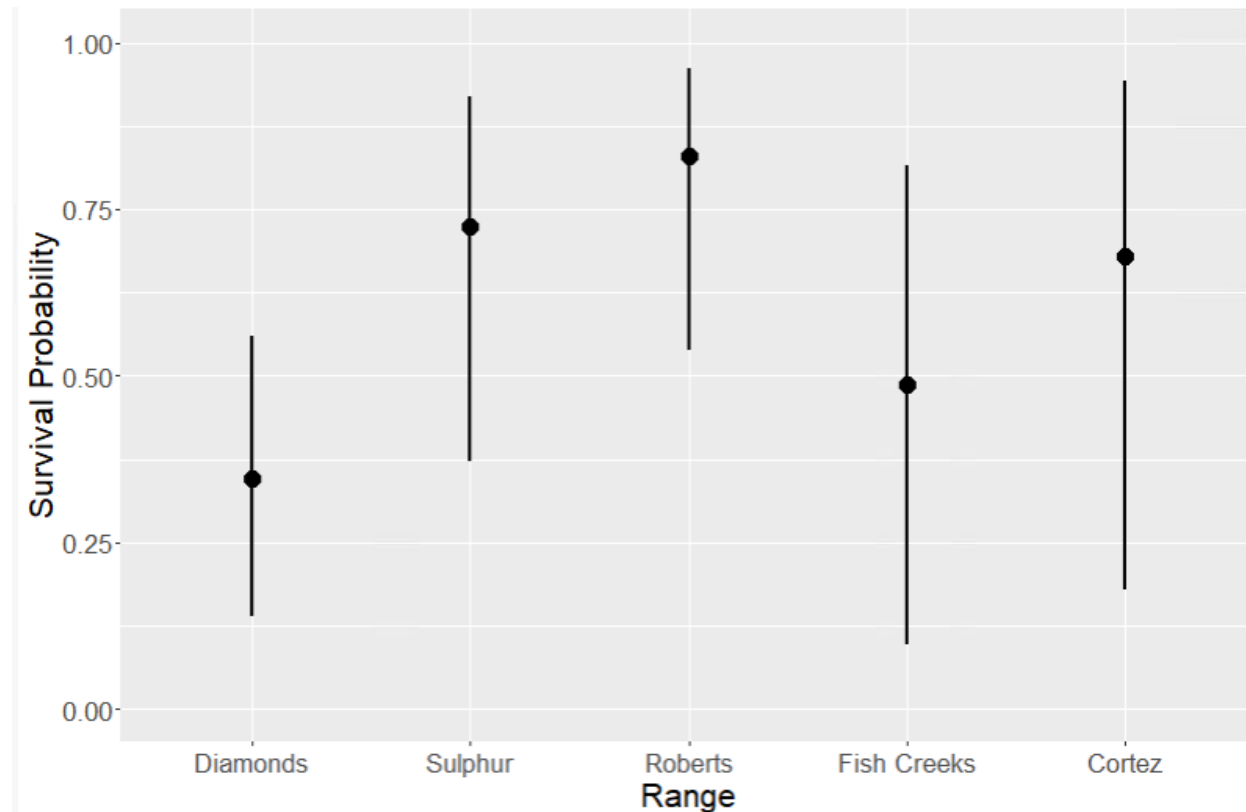
- 52 collars deployed from 2017-2020
 - 4 collars remain on the landscape today
- Average of 2480 pts/ind (107-4029) and 597 days of data/ind (57-979)
 - 10 collared deer from 065 that came over to winter in MA 14 this year
 - Wintered in the Dry Hills, Sulfur Springs, and NE Diamonds.
 - Significant overlap in MA 14 and 065 deer winter ranges**
- **Clear migration corridor and stop over locations for focus in respect to potential projects.**



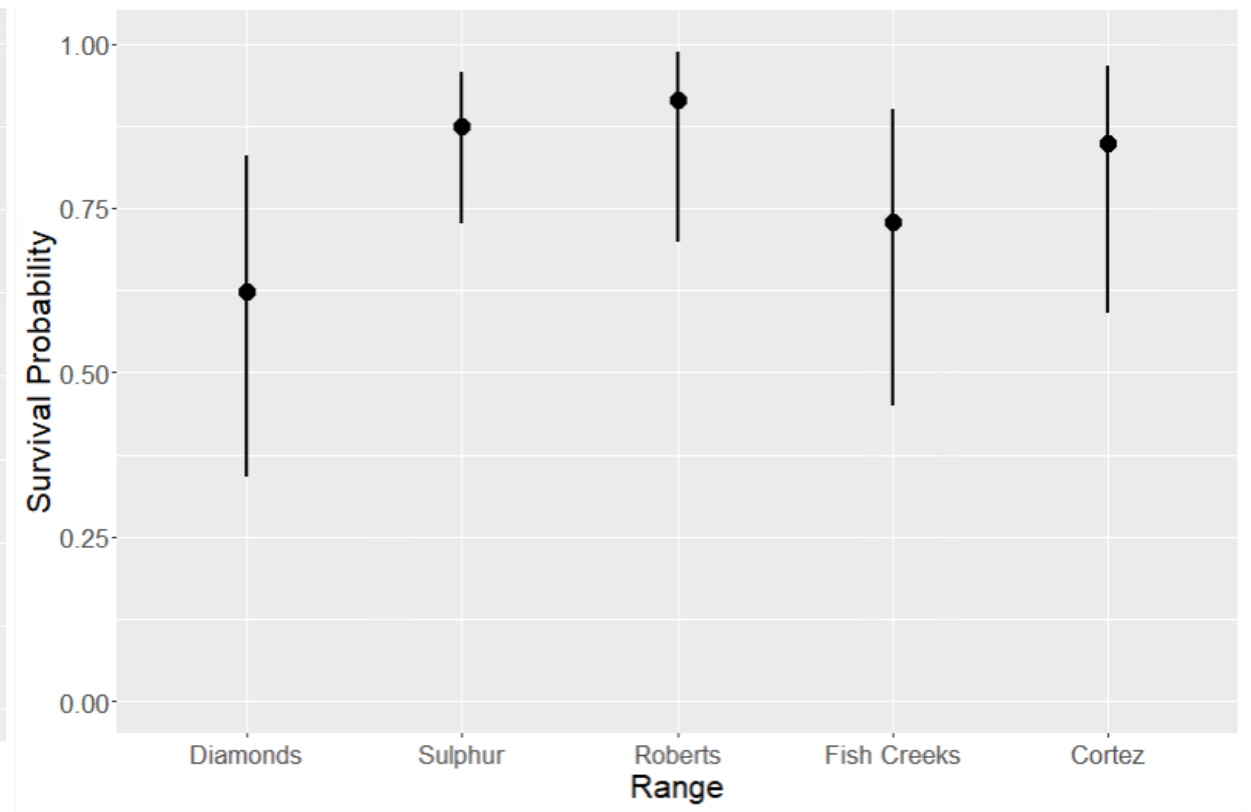
Survival of MA14 Deer: 35 – 91%

Top model: \sim Range + Season

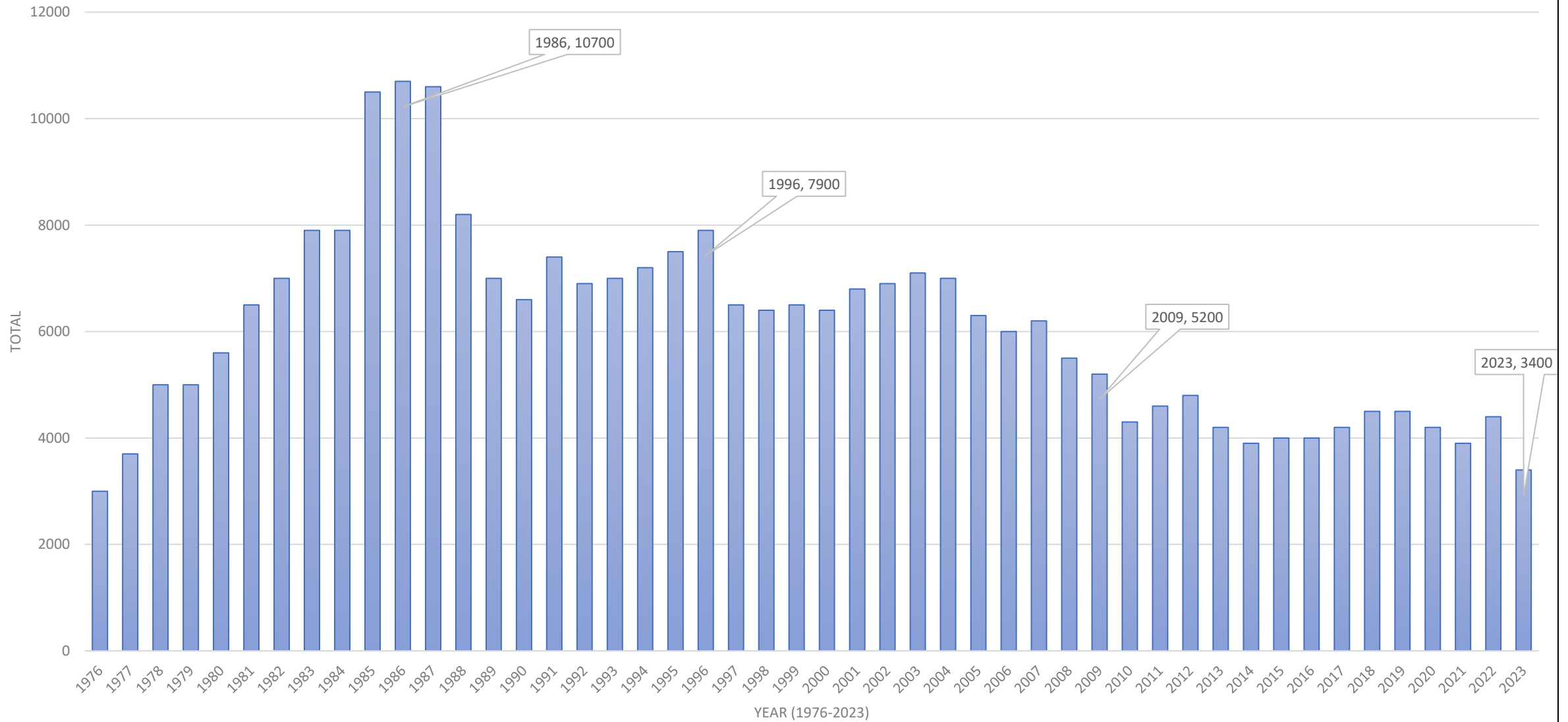
- Summer



- Winter



Management Area 14 Population Estimates Mule Deer



Population Metrics

- In November, a post season survey was conducted, however there was serious question regarding the accuracy of the data.
- A post season survey will be prioritized this fall.
- Record spring sample size of 2,400 deer (highly concentrated on winter range)
- A model adjustment was made to more accurately reflect recent sex and age ratios observed on survey.
- Reduction in quotas to address impacts of the above average winter and to target the post-season management objective of 30 bucks:100 does.
- Eureka CAB and the Commission approved of these quota recommendations.

Unit Group: 141,142,143,144,145

Date Prepared: 3/29/2023

Herd Results

Year	Fall Survey			Total	Spring Survey		Total	Postseason Ratios (observed)			Spring Ratio (obs)	Modeled Buck Ratio		Pop Est (Sept)
	Buck	Doe	Fawn		Adult	Fawn		Buck	Fawn	F:Ad	F:Ad	Postseas	Preseas	
2020-2021				0	1,357	377	1,734	--	--	--	28	30	41	3,900
2021-2022	212	681	352	1,245	770	173	943	31	52	39	22	32	43	4,400
2022-2023				0	1,800	562	2,362	--	--	--	31	27	39	3,400

Harvest Results

Year	Archery Success (%)		Muzzleloader Success (%)	Any-Legal-Weapon Success (%)			Avg. Age	4-Pt or Greater (%)	Total Antlerless Harvest	NR Guided Success (%)	Junior Success (%)	Comp Tag Success (%)
	E	L		E	M	L						
2020-2021	21%	0%	60%	44%	0%	54%		30%	25	58%	67%	64%
2021-2022	18%	0%	26%	47%	0%	43%		34%	33	80%	66%	46%
2022-2023	20%	0%	56%	45%	0%	50%		31%	22	44%	70%	89%

Approved (Previous Year) and Recommended (Current Year) Tag Quota

Year	Archery Hunt		Muzzleloader Hunt		Early ALW Hunt		Mid ALW Hunt		Late ALW Hunt		Antlerless Hunt	Junior Hunt	NR Guided Hunt	Comp Tags
	RES	NR	RES	NR	RES	NR	RES	NR	RES	NR	RES	RES		
2021-2022	200	25	20	2	230	15	0	0	25	2	0	190	11,1	14
2022-2023	220	23	20	2	270	23	0	0	35	3	0	190	10,1	10
2023-2024	140	15	15	1	200	9	0	0	20	1	0	70	12,2	16
Tag Trend	DEC	DEC	DEC	DEC	DEC	DEC	=	=	DEC	DEC	=	DEC	INC	INC

Limiting Factors

- Based on the team's 2022 Limiting Factor sheet:
 1. Pinyon-Juniper (Conifer) Invasion
 2. Improper Grazing – Wild horses
 3. Climate/Weather
 4. Limited Water Distribution

2022 Project Proposal Updates

- Vinini Creek and Henderson Creek Pinyon-Juniper Removal
- Roberts Creek Corridor Pinyon-Juniper Removal
- East Whistler Mtn. Pinyon-Juniper Removal

Questions and Discussion

- Discussion Points:
 - Limiting Factor Ranking Sheet/Needs Assessment Worksheet (Next Meeting)
 - Field trip location and date
 - Potential project proposal ideas
 - Any BLM, FS, Eureka County, Mining, etc. project updates and/or potential projects/plans
 - NGM Gold Rush BEA habitat enhancement project in Cortez Range

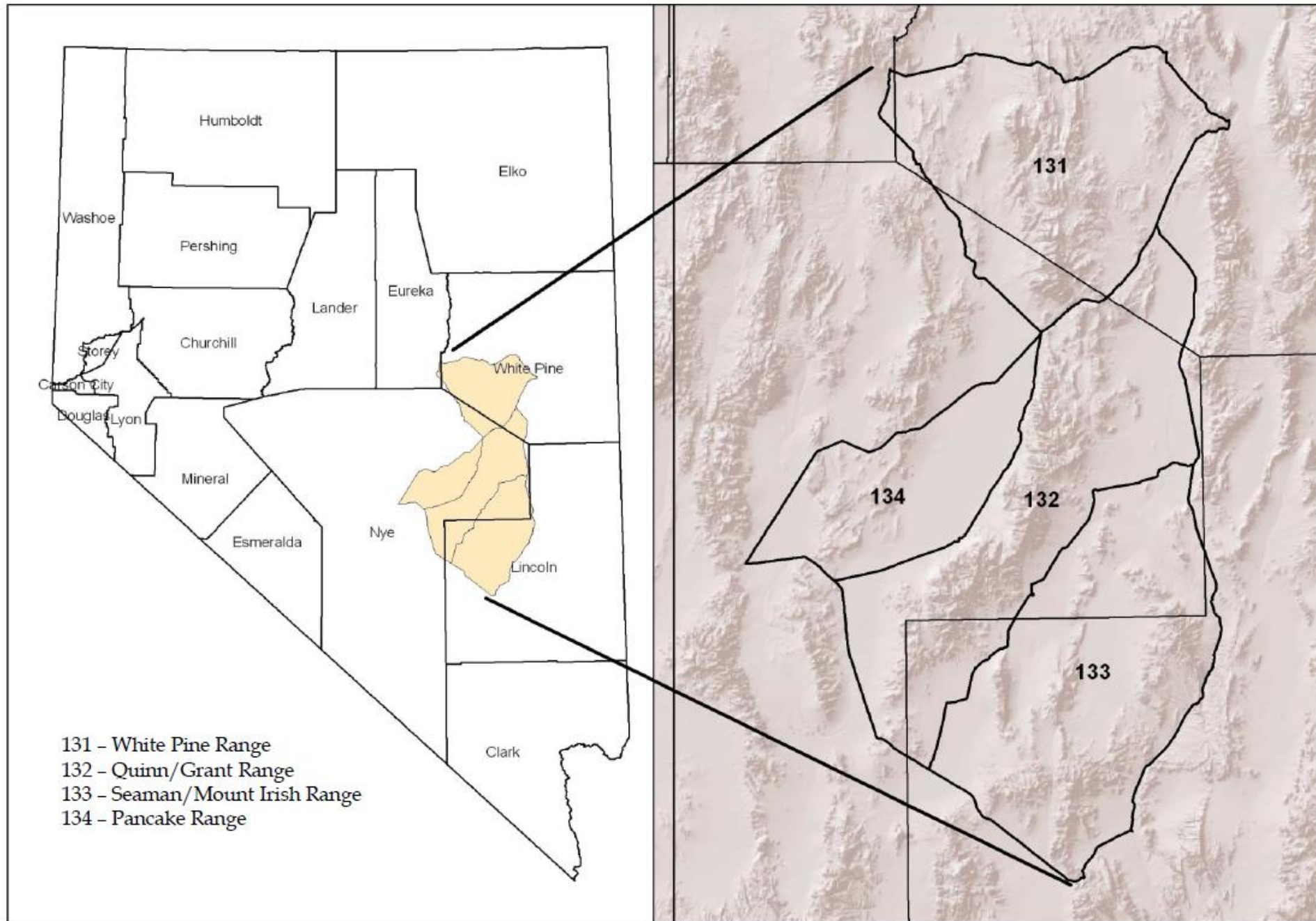
Mule Deer Enhancement Program

MA13

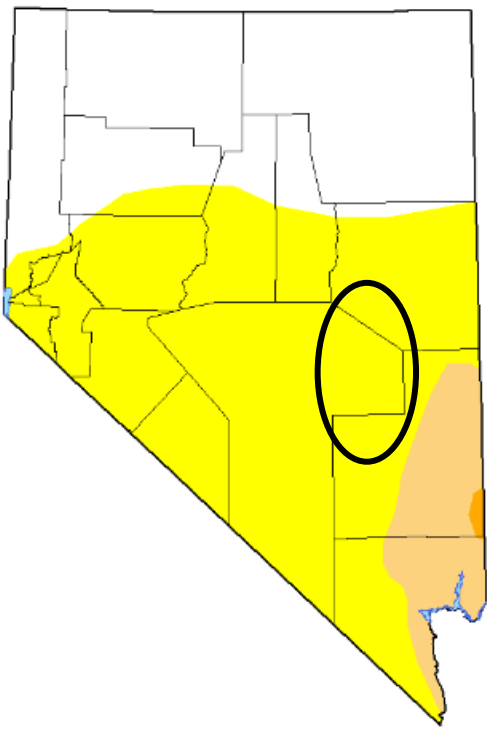
Introductions

- NDOW:
 - Josh Kirk – Game Biologist
 - Madi Ellingwood – Habitat Biologist
 - Tom Donham – Eastern Region Supervising Game Biologist
 - Caleb McAdoo - Eastern Region Supervising Habitat Biologist
- Team Members:
 - Steve Marquez – White Pine County
 - Jake Rosevear – White Pine County
 - Trent Gordon – Eureka County
 - Gracian Uhalde, Jr. – White Pine/Nye County
 - Shane Boren – White Pine County
 - Justin Rozich – Forest Service
 - Cody Coombs – BLM
 - Matt Rajala - BLM

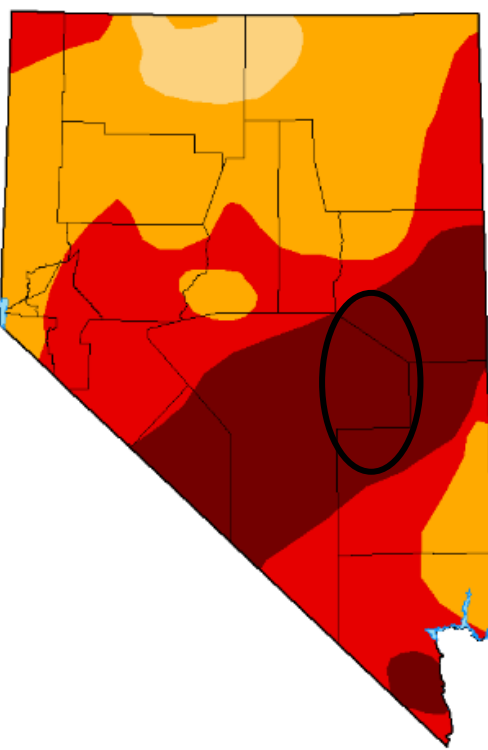
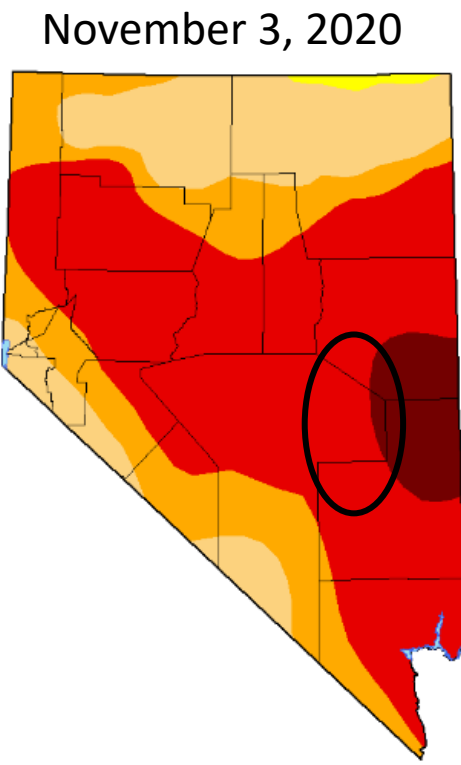
Area 13 Geographical Overview



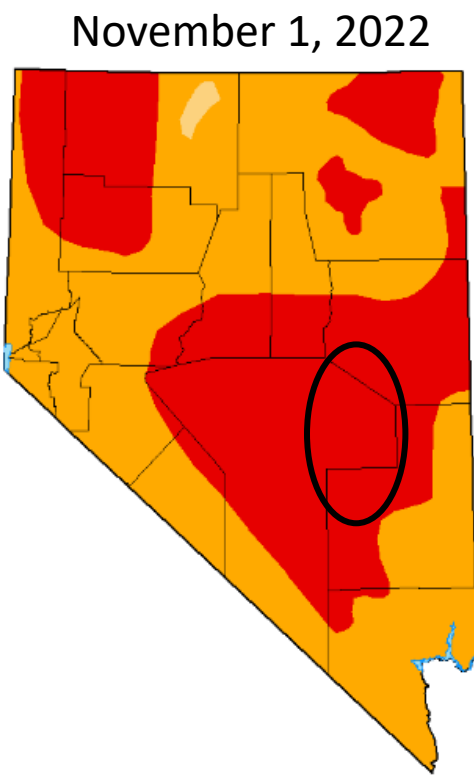
Climate



November 5, 2019



November 2, 2021

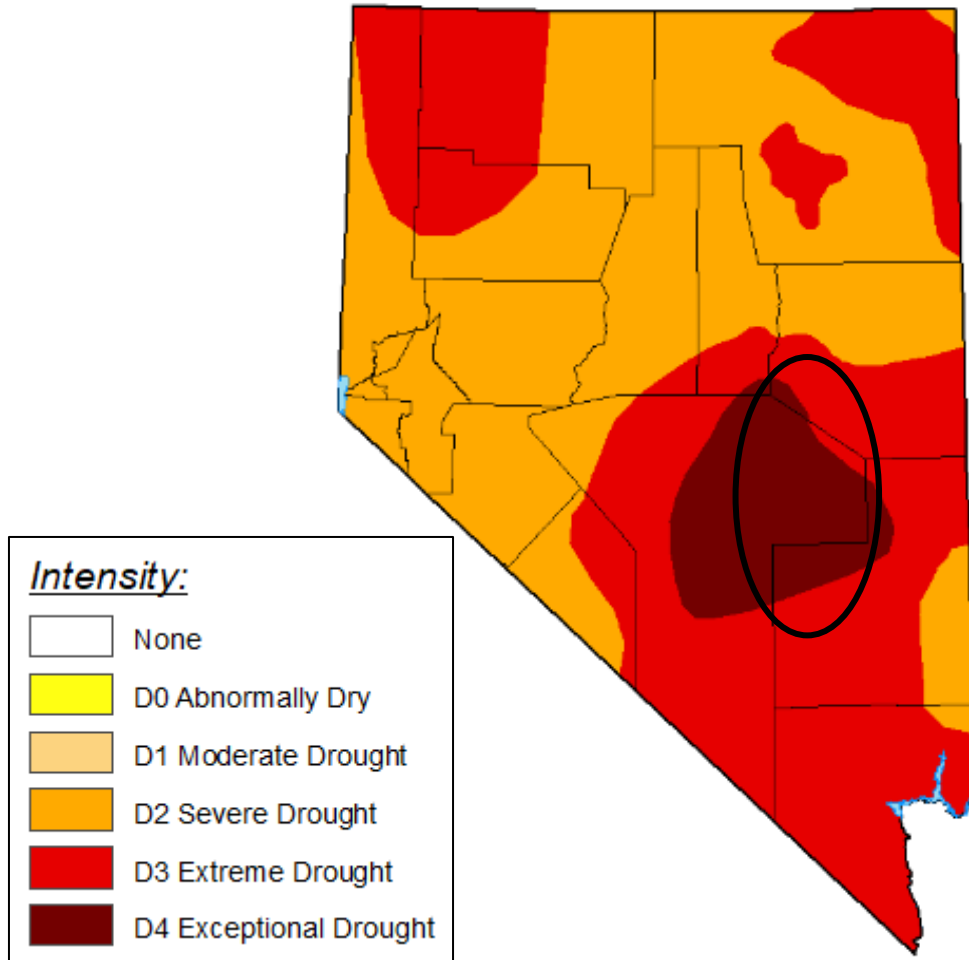


Source: NV Drought Monitor

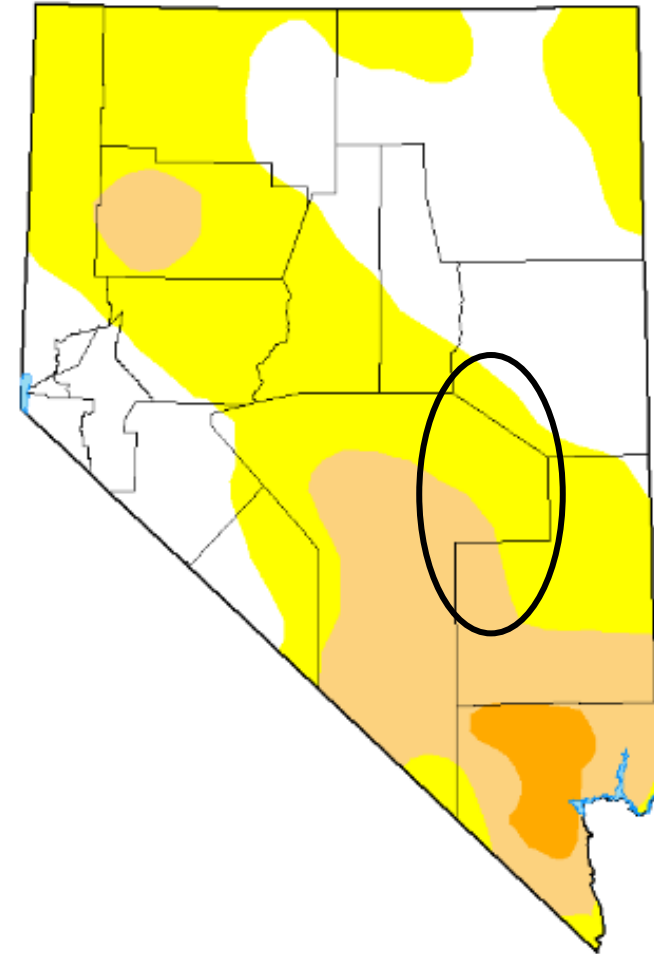
Intensity:

None	None
D0 Abnormally Dry	D0 Abnormally Dry
D1 Moderate Drought	D1 Moderate Drought
D2 Severe Drought	D2 Severe Drought
D3 Extreme Drought	D3 Extreme Drought
D4 Exceptional Drought	D4 Exceptional Drought

Climate



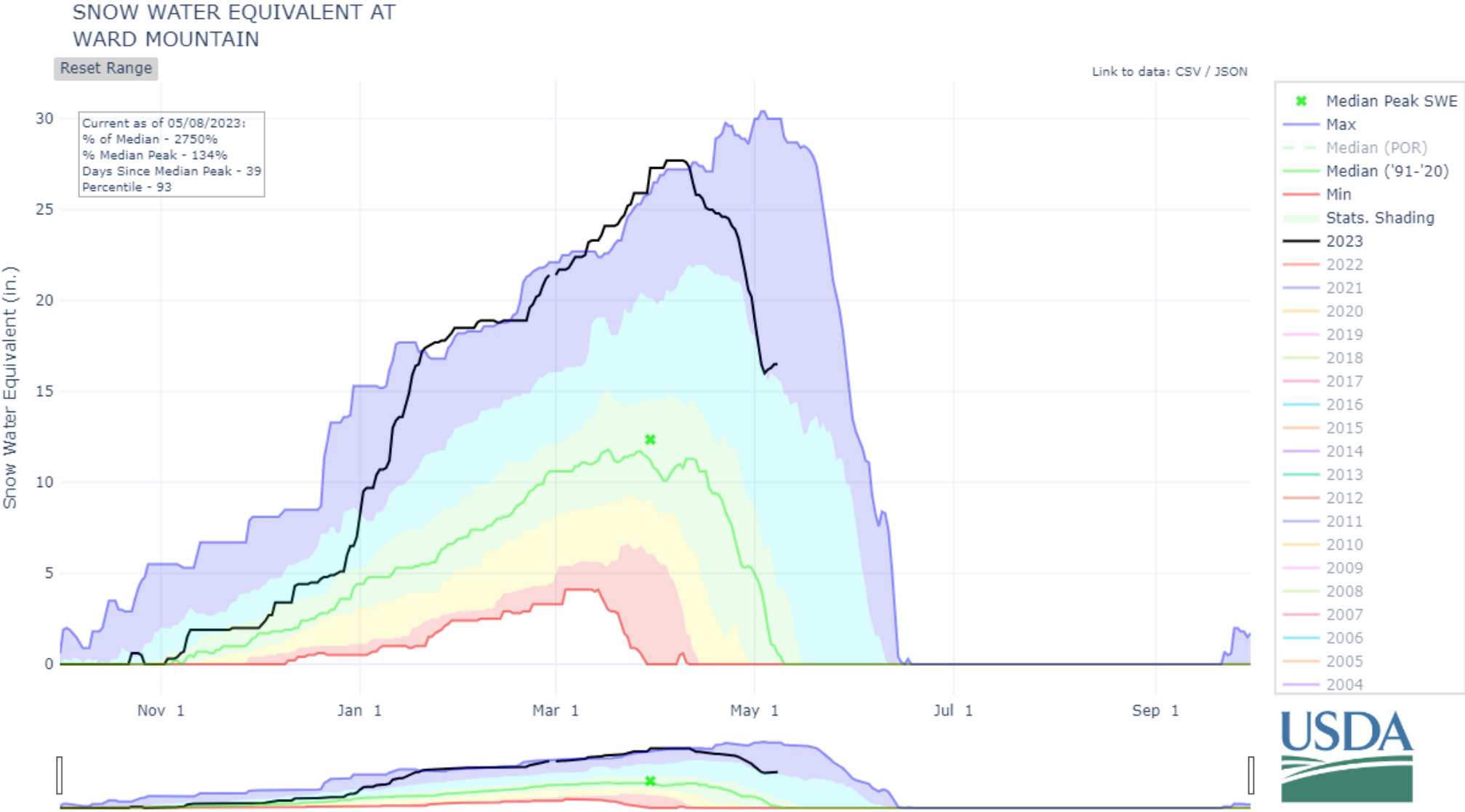
May 3, 2022



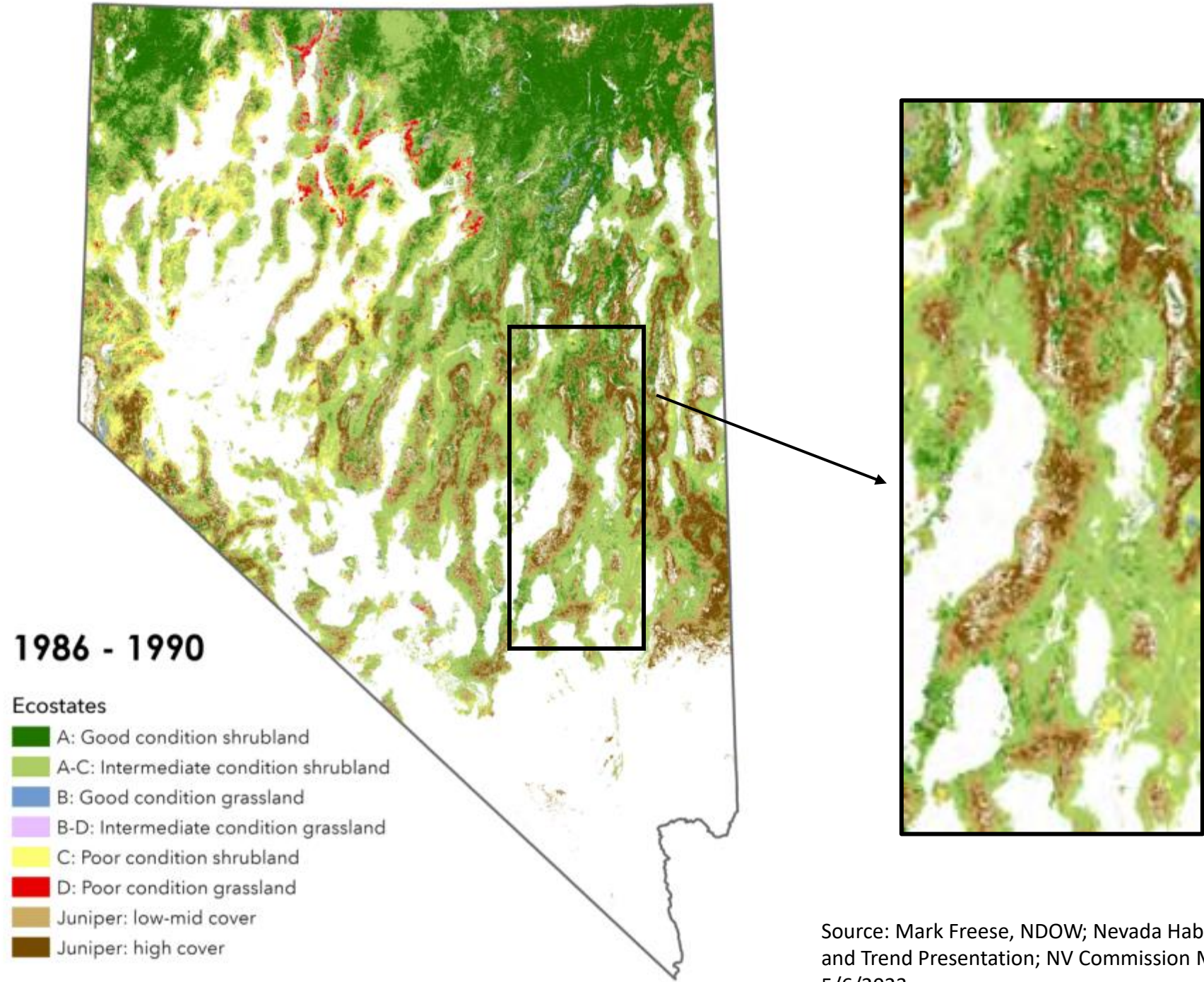
May 2, 2023

Source: NV Drought Monitor

Climate

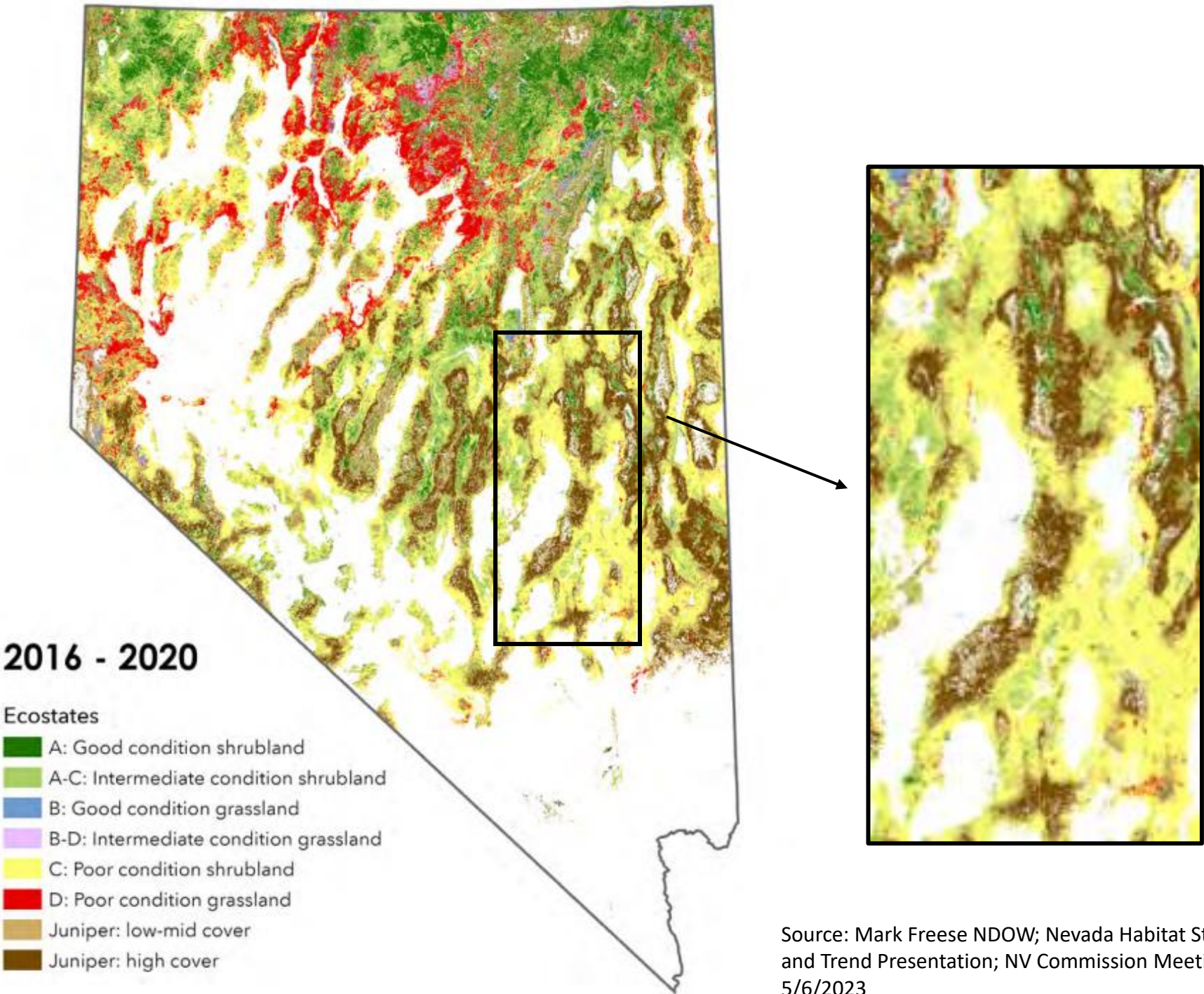


Habitat



Source: Mark Freese, NDOW; Nevada Habitat Status and Trend Presentation; NV Commission Meeting 5/6/2023

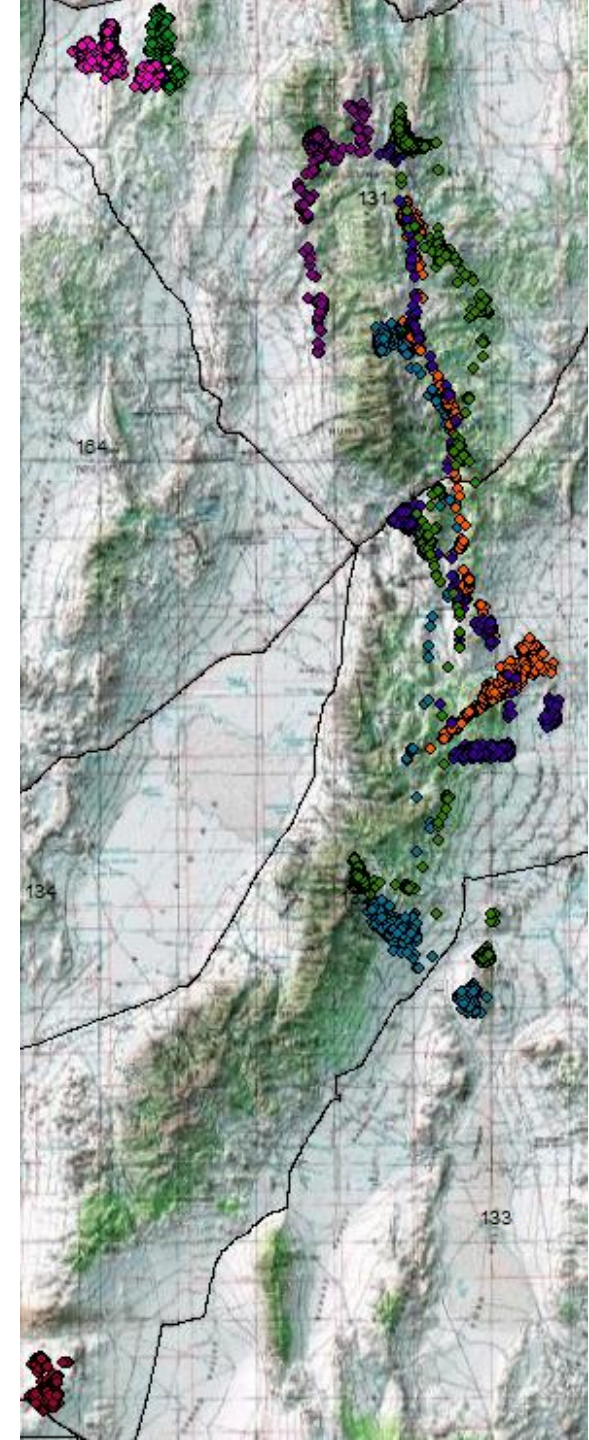
Habitat



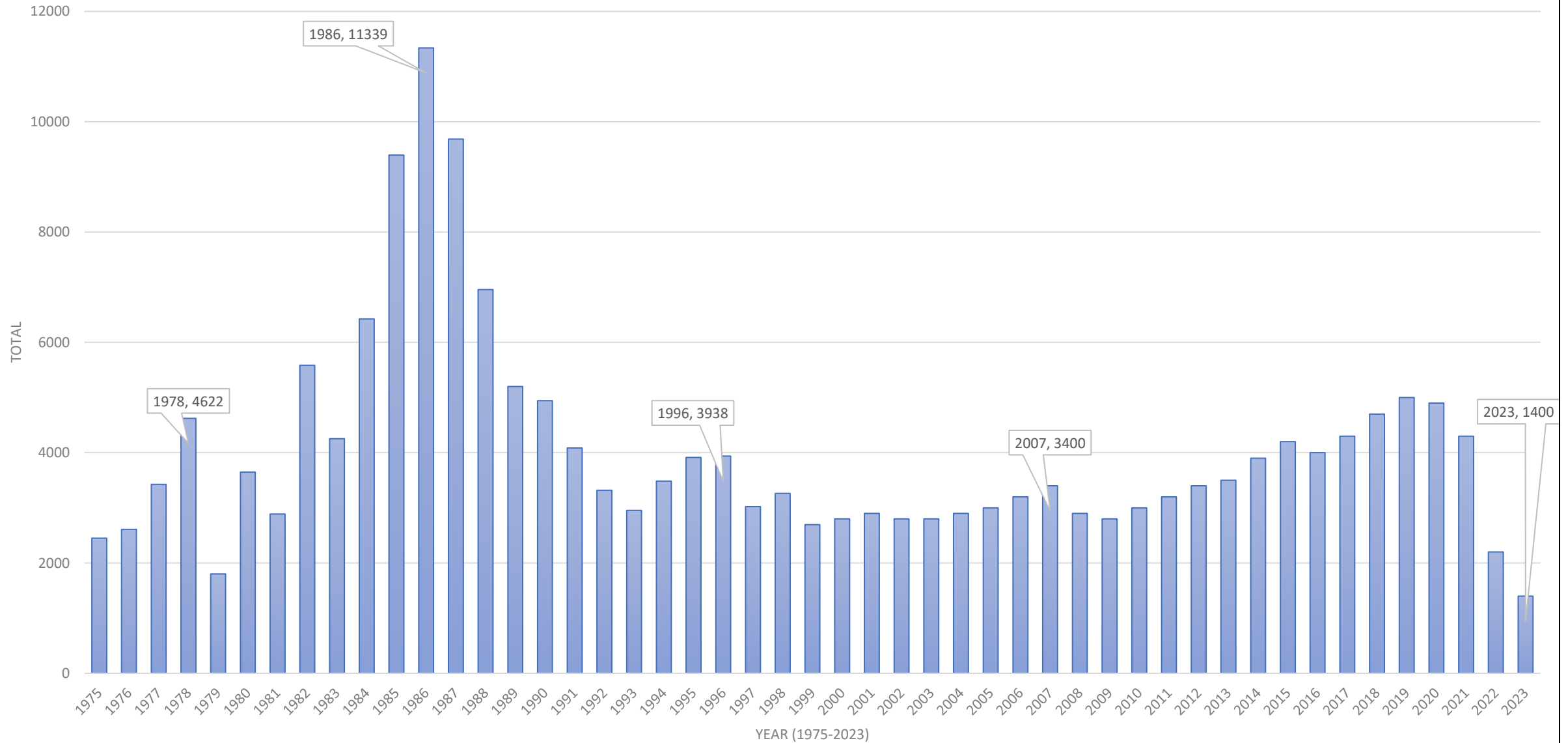
Source: Mark Freese NDOW; Nevada Habitat Status and Trend Presentation; NV Commission Meeting 5/6/2023

Radio Collared Deer in MA13

- 10 collared does 2017-2020 (low sample size)
 - **Clear migration corridor and stop over locations for focus in respect to potential projects**
 - Currant Hills, Ellison Knobs, Douglas Hills, E. Horse Range (Upper and Lower Cove, Perish Springs), Scofield Bench, N. Golden Gate Range
 - Using similar areas as observed on aerial surveys
 - Sample size not large enough to properly evaluate space use and resource selection
 - The upcoming collaring project will provide more up to date movement and seasonal use data



Management Area 13 Population Estimates Mule Deer



Population Metrics

- In November, a post season survey was conducted, however there was serious question regarding the accuracy of the data.
- A post season survey will be prioritized this fall.
- A model adjustment was made to more accurately reflect recent sex and age ratios observed on survey.
- Reduction in quotas to address impacts of the above average winter and to target the post-season management objective of 35 bucks:100 does.
- White Pine CAB and the Commission approved of these quota recommendations.

Unit Group: 131-134							Date Prepared: 3/29/2023							
Herd Results														
Year	Fall Survey			Total	Spring Survey		Total	Postseason Ratios (observed)			Spring Ratio (obs)	Modeled Buck Ratio		Pop Est (Sept)
	Buck	Doe	Fawn		Adult	Fawn		Buck	Fawn	F:Ad	F:Ad	Postseas	Preseas	
2020-2021				0	482	121	603	--	--	--	25	40	48	4,300
2021-2022	31	157	59	247	373	96	469	20	38	31	26	21	32	2,200
2022-2023				0	394	122	516	--	--	--	31	26	37	1,400
Harvest Results														
Year	Archery Success (%)		Muzzleloader Success (%)	Any-Legal-Weapon Success (%)			Avg. Age	4-Pt or Greater (%)	Total Antlerless Harvest	NR Guided Success (%)	Junior Success (%)	Comp Tag Success (%)		
	E	L		E	M	L								
2020-2021	52%	0%	51%	32%	0%	38%		32%	20	57%	60%	64%		
2021-2022	27%	0%	30%	29%	0%	31%		27%	32	60%	58%	30%		
2022-2023	50%	0%	20%	56%	0%	25%		43%	2	55%	56%	0%		
Approved (Previous Year) and Recommended (Current Year) Tag Quota														
Year	Archery Hunt		Muzzleloader Hunt		Early ALW Hunt		Mid ALW Hunt		Late ALW Hunt		Antlerless Hunt	Junior Hunt	NR Guided Hunt	Comp Tags
	RES	NR	RES	NR	RES	NR	RES	NR	RES	NR	RES	RES		
2021-2022	60	6	35	4	300	20	0	0	30	2	0	170	14,2	8
2022-2023	6	2	5	2	45	2	0	0	4	2	0	20	13,2	4
2023-2024	4	1	3	1	25	2	0	0	3	1	0	8	6,2	5
Tag Trend	DEC	DEC	DEC	DEC	DEC	=	=	=	DEC	DEC	=	DEC	INC	INC

Limiting Factors

- Based on the team's 2022 Limiting Factor sheet:
 1. Improper Grazing – Wild horses
 2. Climate/Weather
 3. Pinyon-Juniper (Conifer) Invasion
 4. Limited Water Distribution
 5. Wild Horse and Burro Act

2022 Project Proposal Updates

- Mgt. Area 13 Mule Deer Collaring
 - A Heritage proposal was submitted in early March asking for \$60,000 to support the deployment of 20 collars
 - An additional 10 collars will be funded through a federal grant (total of 30 collars).
 - Heritage Meeting was 5/4/2023
 - The collaring project was approved by the Heritage Committee and approved by the Commission on 5/5/2023.
 - Collaring will occur this winter and updates will be given to the group regarding potential volunteer opportunities.
- Northern Golden Gate Guzzlers Range Guzzler Series
 - NEPA process in progress.
- Currant to Upper Perish Habitat Enhancement
 - NEPA Process?
 - Justin – update?

Questions and Discussion

- Discussion Points:
 - Limiting Factor Ranking Sheet/Needs Assessment Worksheet (Next Meeting)
 - Field trip location and date
 - Potential project proposal ideas
 - Any BLM, FS, White Pine County, Mining, etc. project updates and/or potential projects/plans