

Subcommittee Members: Matt Melarkey, Dan Ryan,
Joe Zweifel, Larry Johnson, Steve Robinson

Department Representative: Jon Ewanyk
Tori Cernoch

**Nevada Board of Wildlife Commissioners
Mule Deer Enhancement Oversight Committee
Mule Deer Enhancement Program Subcommittee
Washoe County; Management Area 1, 2**

**Nevada Department of Wildlife
1100 Valley Road
Reno, Nevada 89511**

Tuesday, June 13, 2023 / 5:30 p.m.

DRAFT Minutes

1. Call to Order – Department Representative

The meeting was called to order at 5:33 PM.

In Attendance:

Matt Melarkey, Subcommittee Member
Dan Ryan, Subcommittee Member
Joe Zweifel, Subcommittee Member
Larry Johnson, Subcommittee Member
Steve Robinson, Subcommittee Member
Jon Ewanyk, Department Representative
Charlie Clements, Oversight Committee Member

Absent:

Tori Cernoch, Subcommittee Member

2. Approval of Agenda – For Possible Action

Member Matt Melarkey made a motion to approve the agenda.

Member Steve Robinson seconded the motion.

Motion passed.

3. Member Announcements and Correspondence – Informational

No member announcements or correspondence.

4. *Management Area 1 and 2 Herd Status Report – Department Representative – Informational

Department Representative Ewanyk presented a report on the status of the mule deer herd in Management Area 1 and 2 and an update on past and current projects. The Subcommittee discussed potential project ideas for this coming year and proposed the idea of a volunteer spring fencing project in place of this year's field trip.

5. Public Comment

Mark Ono, State Director, USDA APHIS Wildlife Services, gave an update on contracting a new fixed wing plane, potentially opening up the ability for more predator work. Mr. Ono also mentioned that Wildlife Services discussed contracting predator removal with Nevada Bighorns Unlimited through a contract. The Subcommittee took a moment of silence for the last part of public comment to honor the passing of Rex Flowers.

6. **Future Subcommittee Meetings – For possible Action**

Subcommittee Member Melarkey discussed the upcoming Mule Deer Enhancement Summit and asked for more information on the date and location. He also requested the Subcommittee members be sent a flyer with the information.

Department Representative Ewanyk motioned to schedule the next meeting on July 11, 2023, at 5:00 PM.

Member Matt Melarkey seconded the motion.

The motion passed.

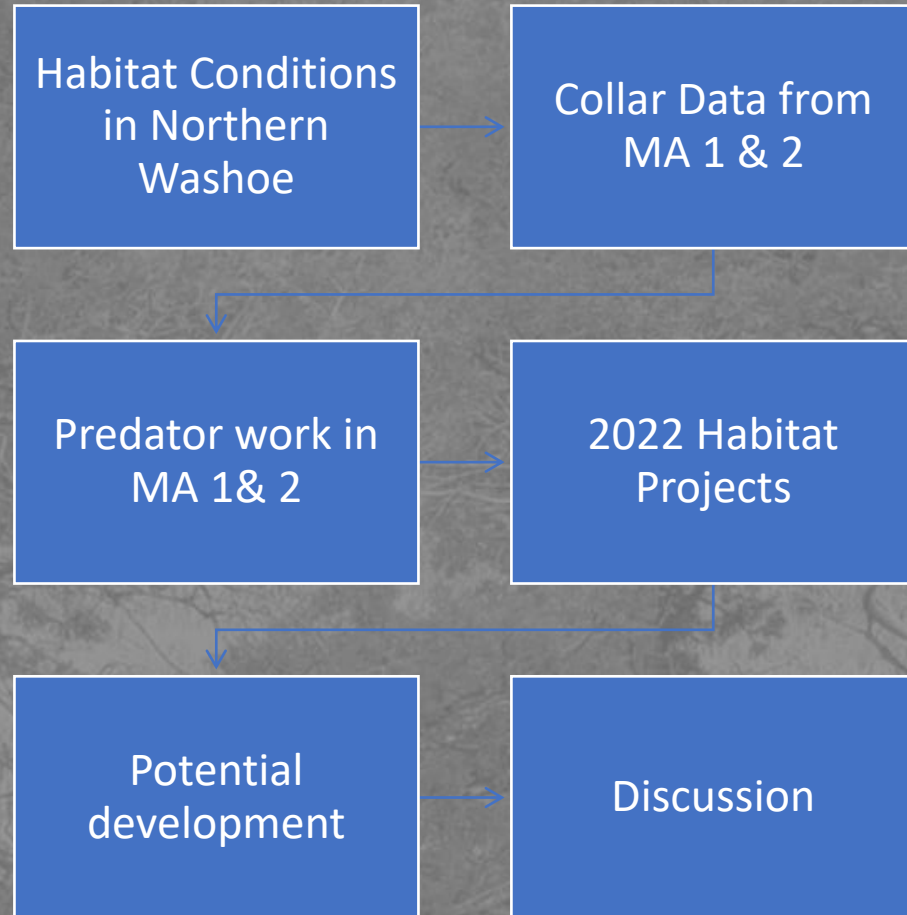
The meeting adjourned at 7:47 PM.

Washoe MDEP

2023 Update



Overview



Habitat Conditions for Northern Washoe

- Started off with a few spring showers in 2022 which helped with fawn recruitment



Habitat Conditions for Northern Washoe

- Started off with a few spring showers in 2022 which helped with fawn recruitment
- Incredibly dry summer & fall



Habitat Conditions for Northern Washoe

- Started off with a few spring showers in 2022 which helped with fawn recruitment
- Incredibly dry summer & fall
- Received snow in October
- 011 and 033 held more snow than the rest of the units



Habitat Conditions for Northern Washoe

- Started off with a few spring showers in 2022 which helped with fawn recruitment
- Incredibly dry summer & fall
- Received snow in October
- 011 and 033 held more snow than the rest of the units
- Most units saw snow burn off in between storms in lower elevation



Habitat Conditions for Northern Washoe

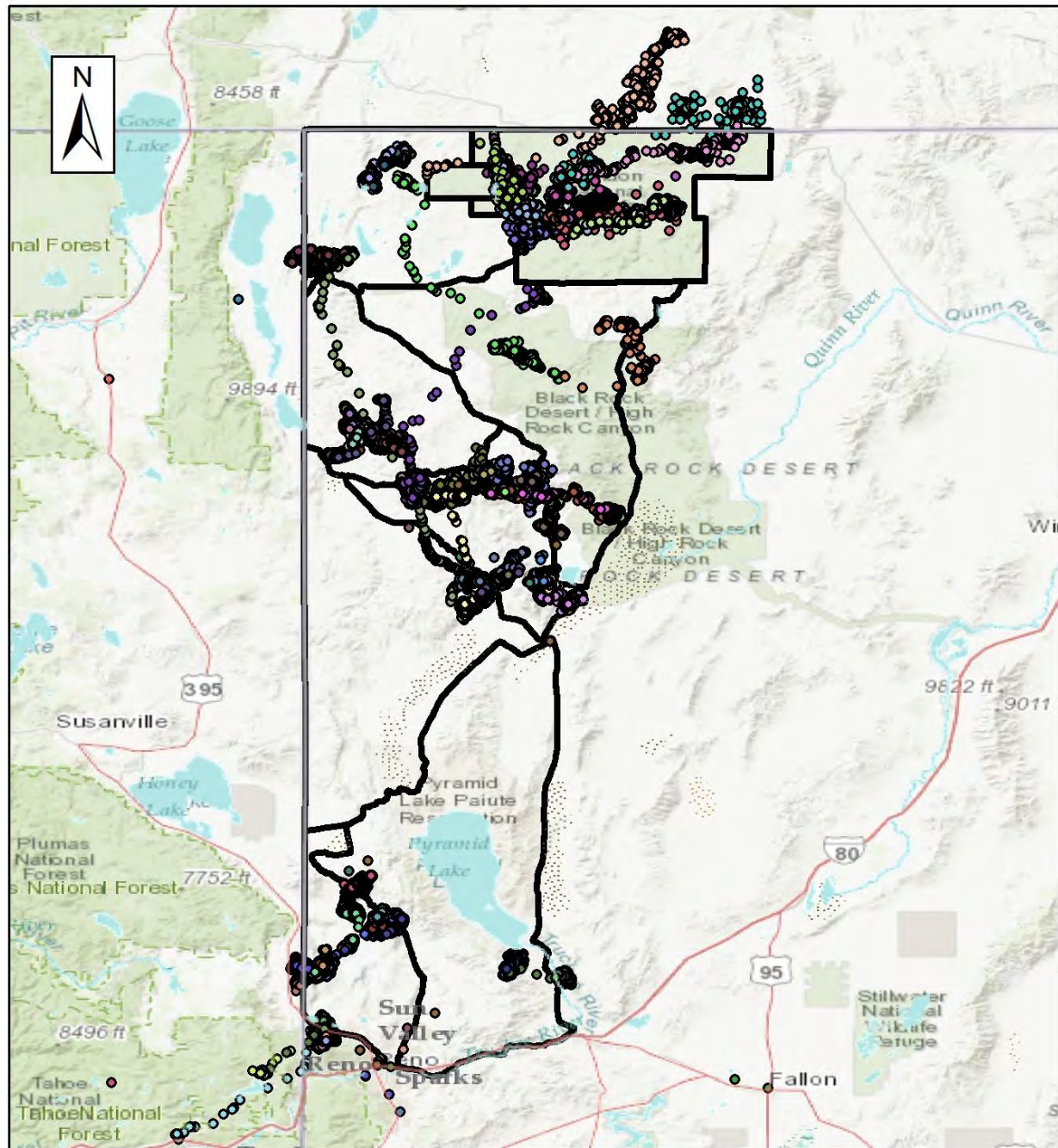
- Started off with a few spring showers in 2022 which helped with fawn recruitment
- Incredibly dry summer & fall
- Received snow in October
- 011 and 033 held more snow than the rest of the units
- Most units saw snow burn off in between storms in lower elevation
- The good soil moisture from winter and spring rains should have deer entering this summer with better feed

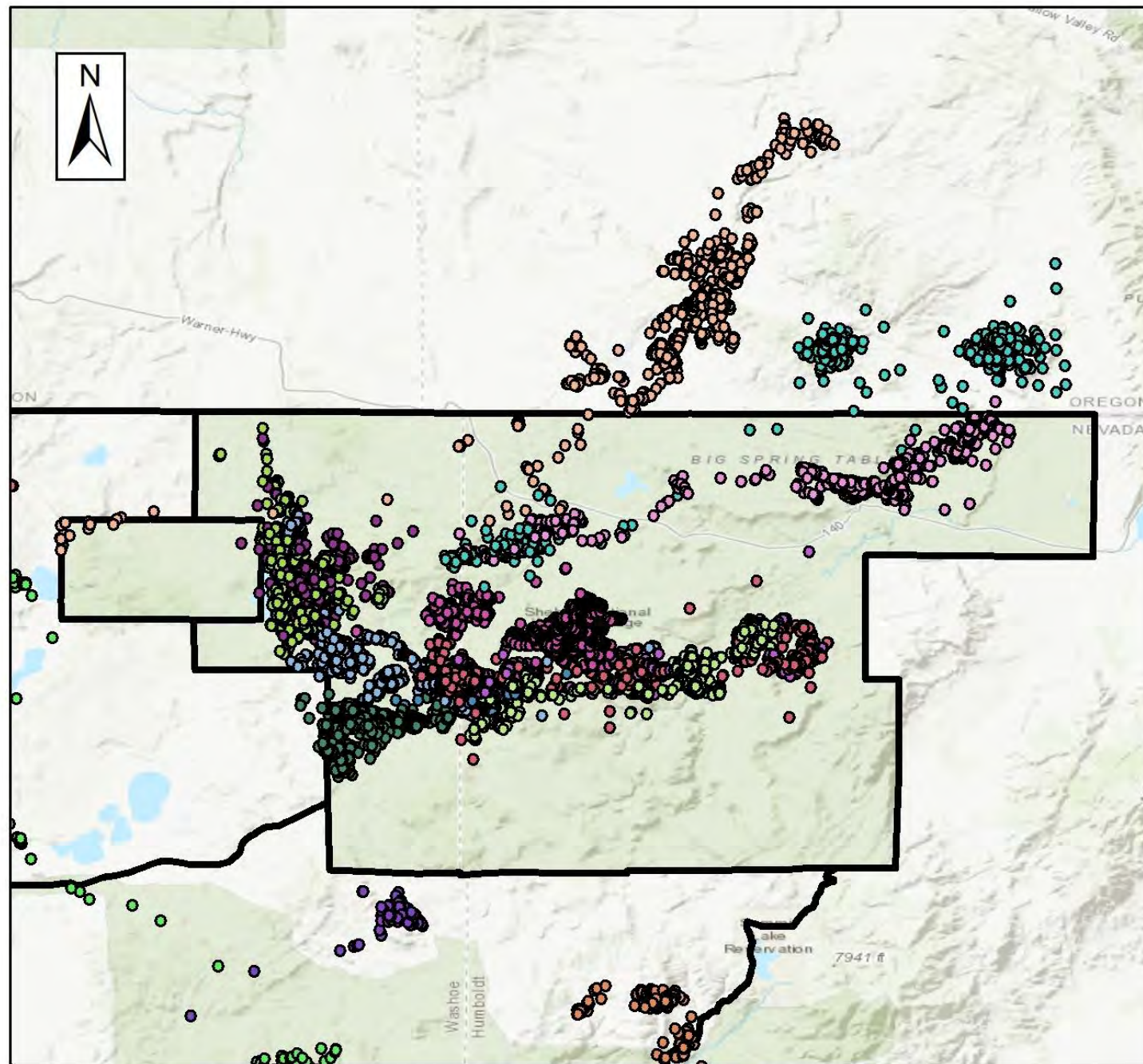


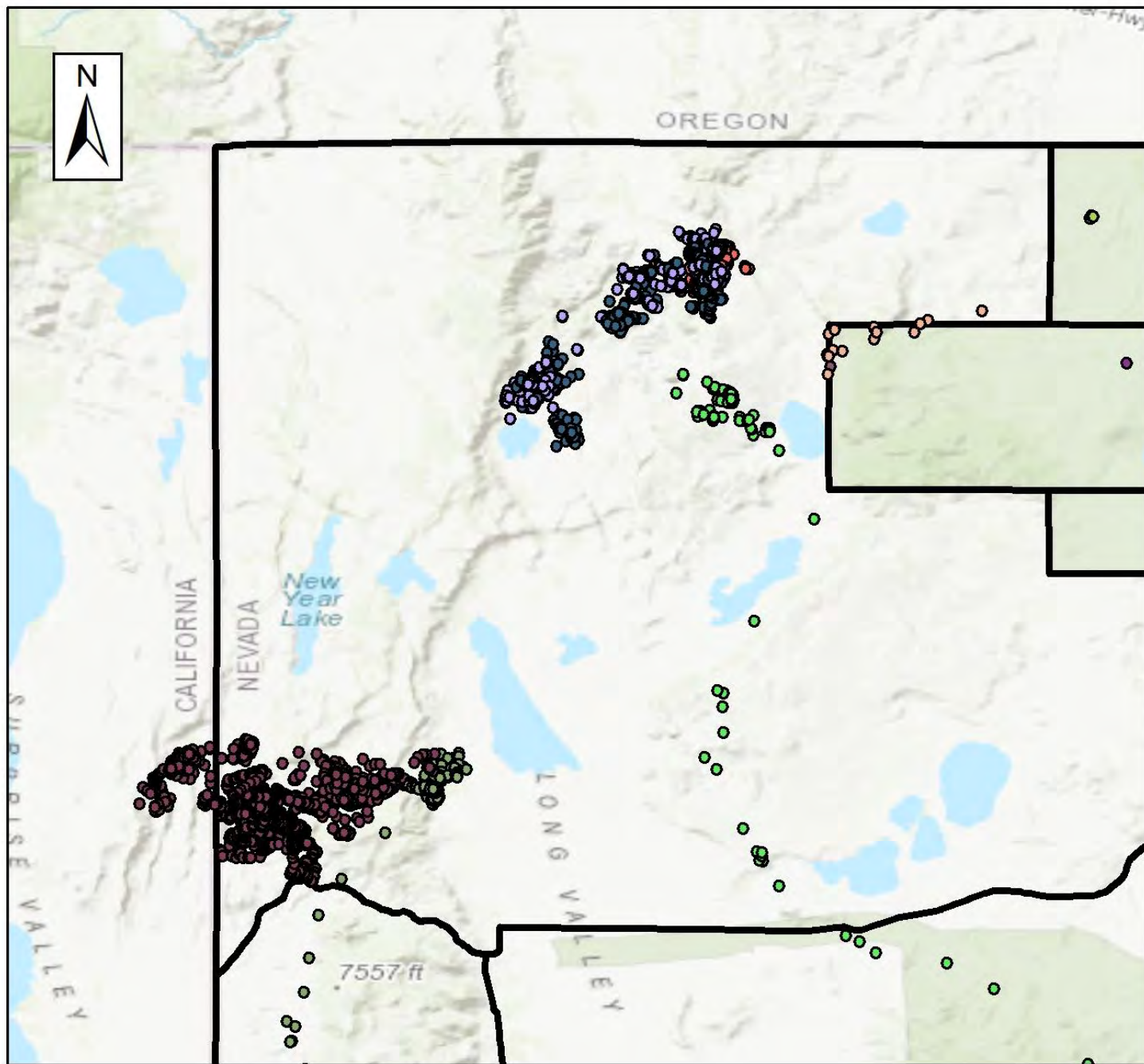
Management Area 1 & 2 Collar Data

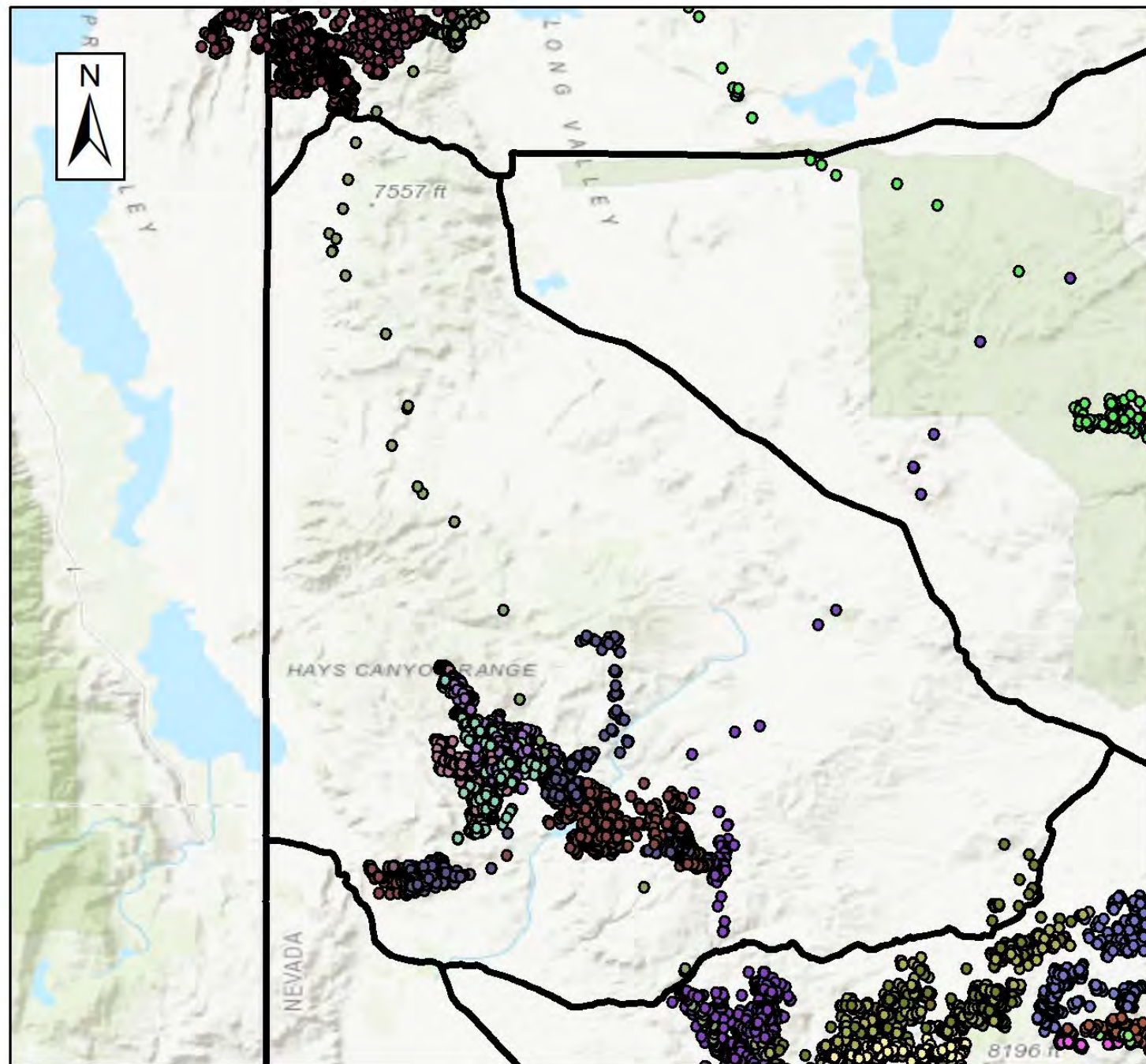
- Collared 28 deer in the first year, and 48 deer in the second
- Deer were still in poor body condition
- Collared bucks this time as well as does
- With the extreme winter, we saw some extreme migrations
- Used Muley Fanatic money to purchase Solar Ear Tags

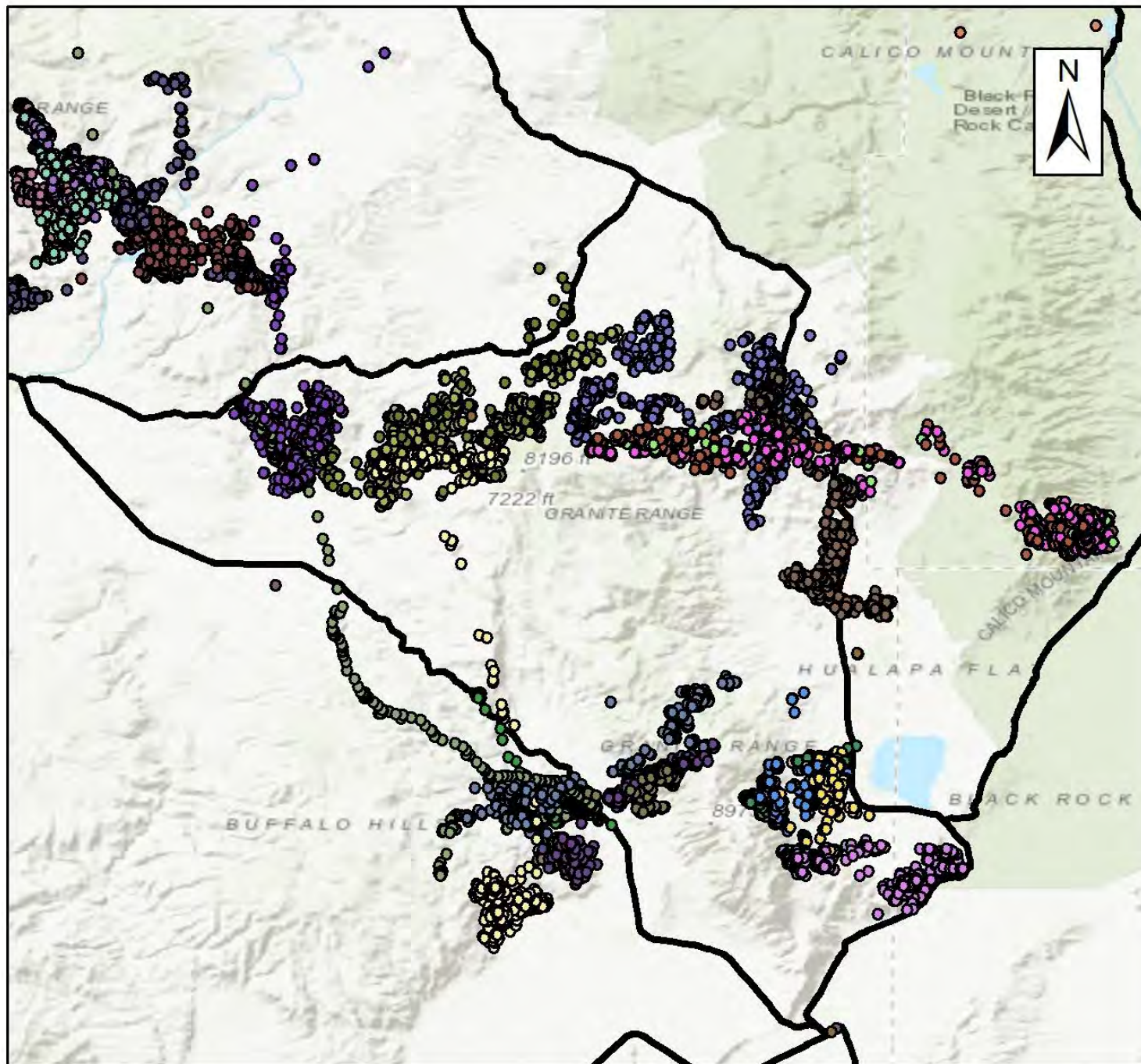


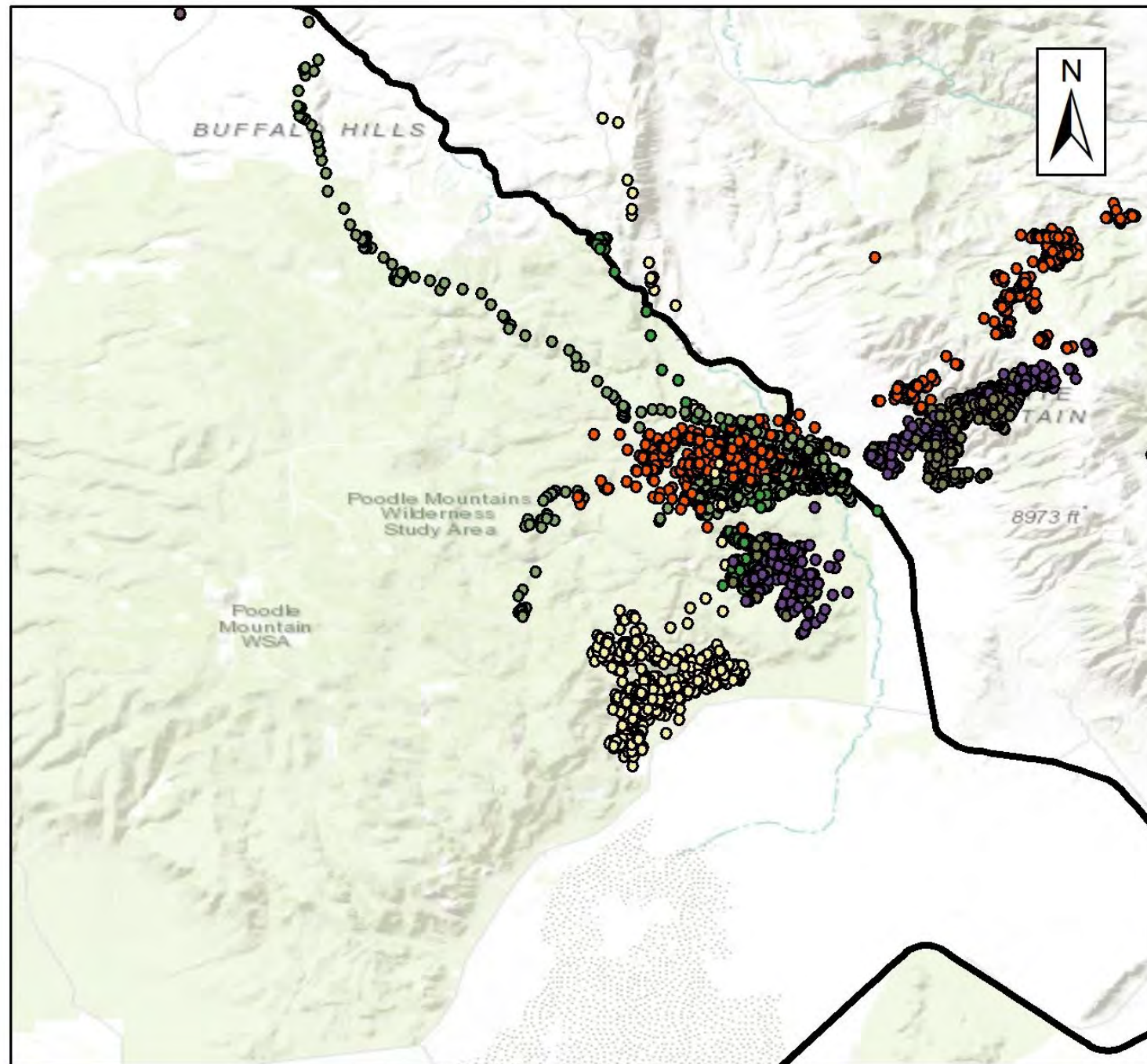


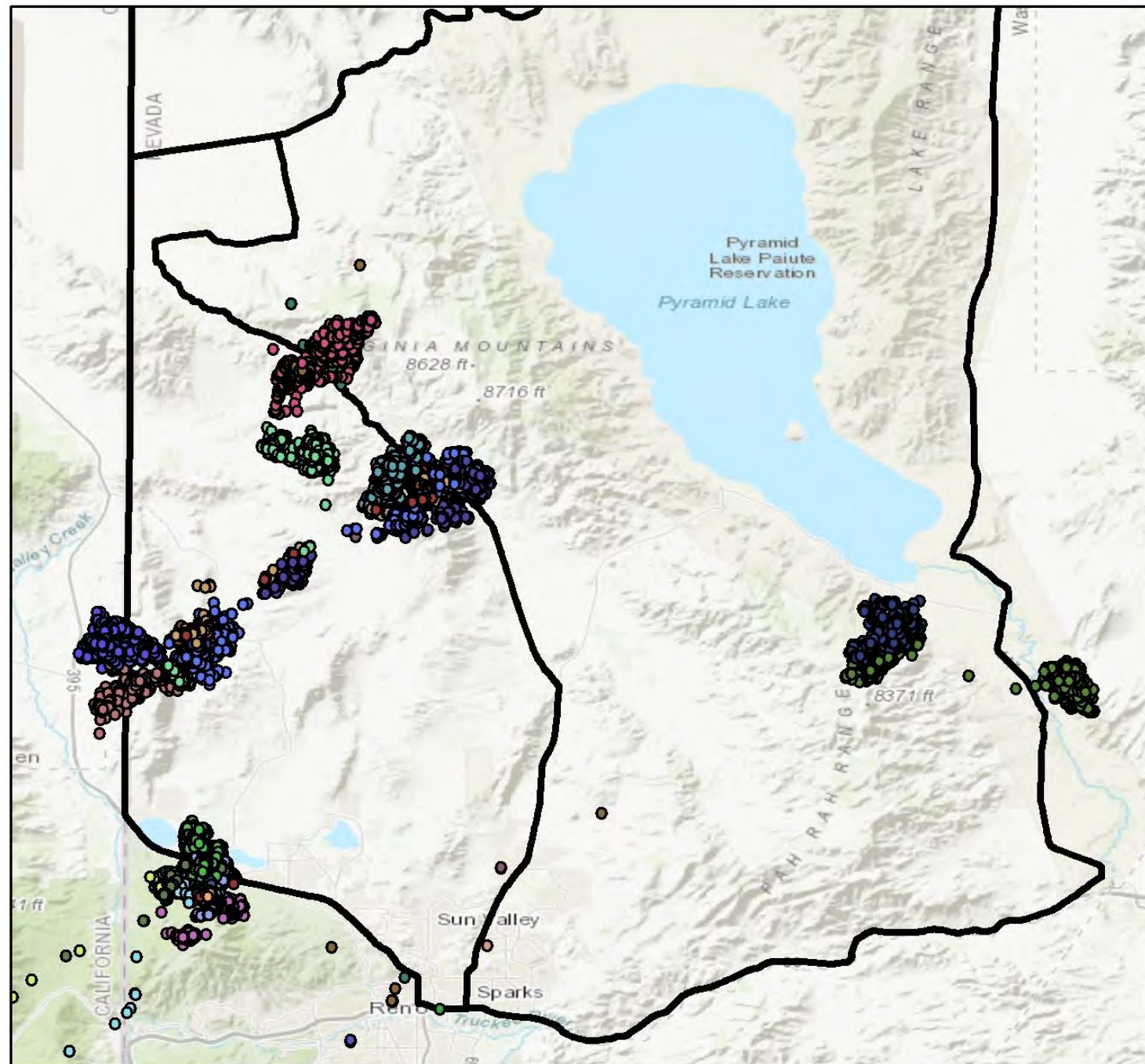






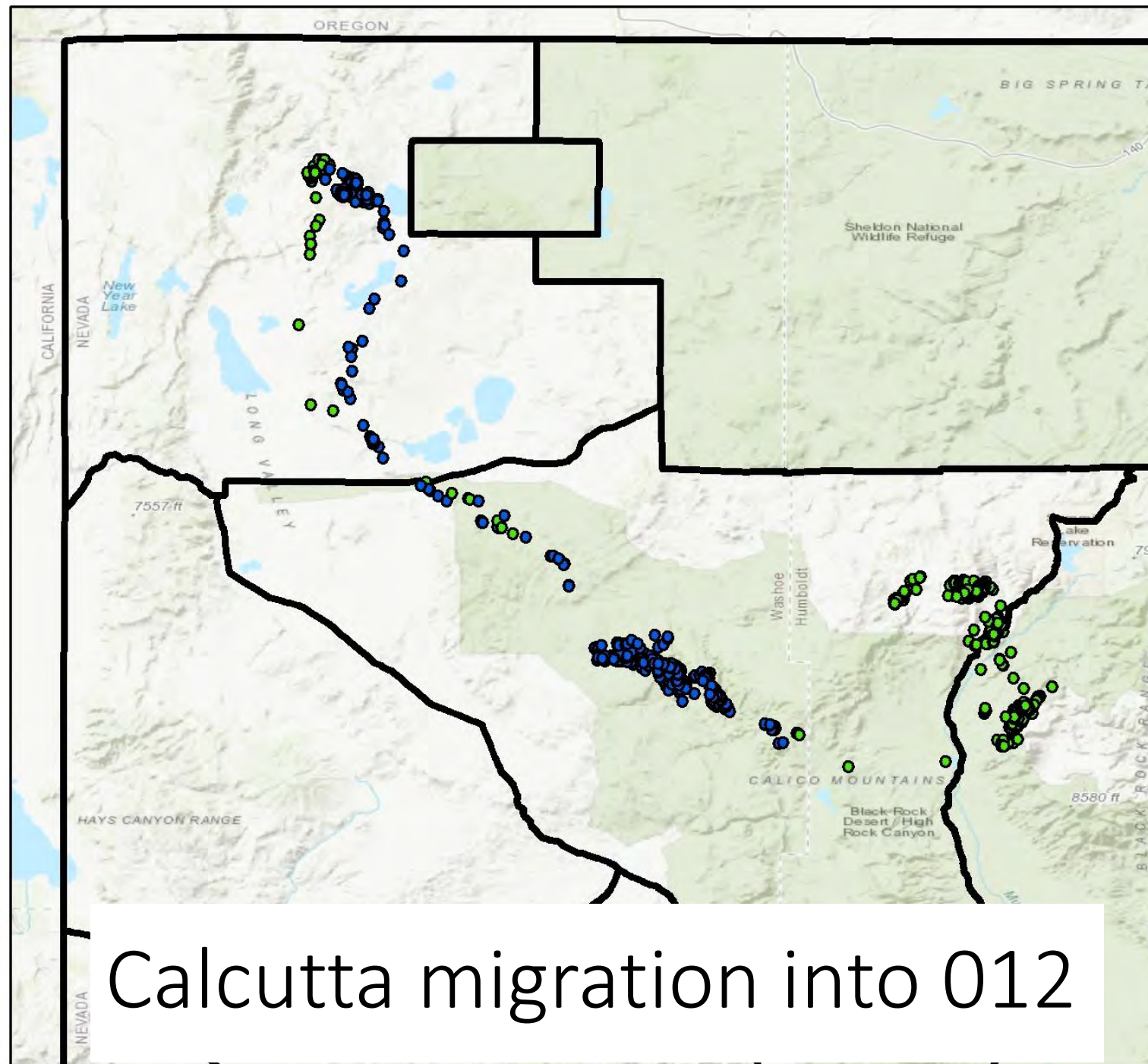




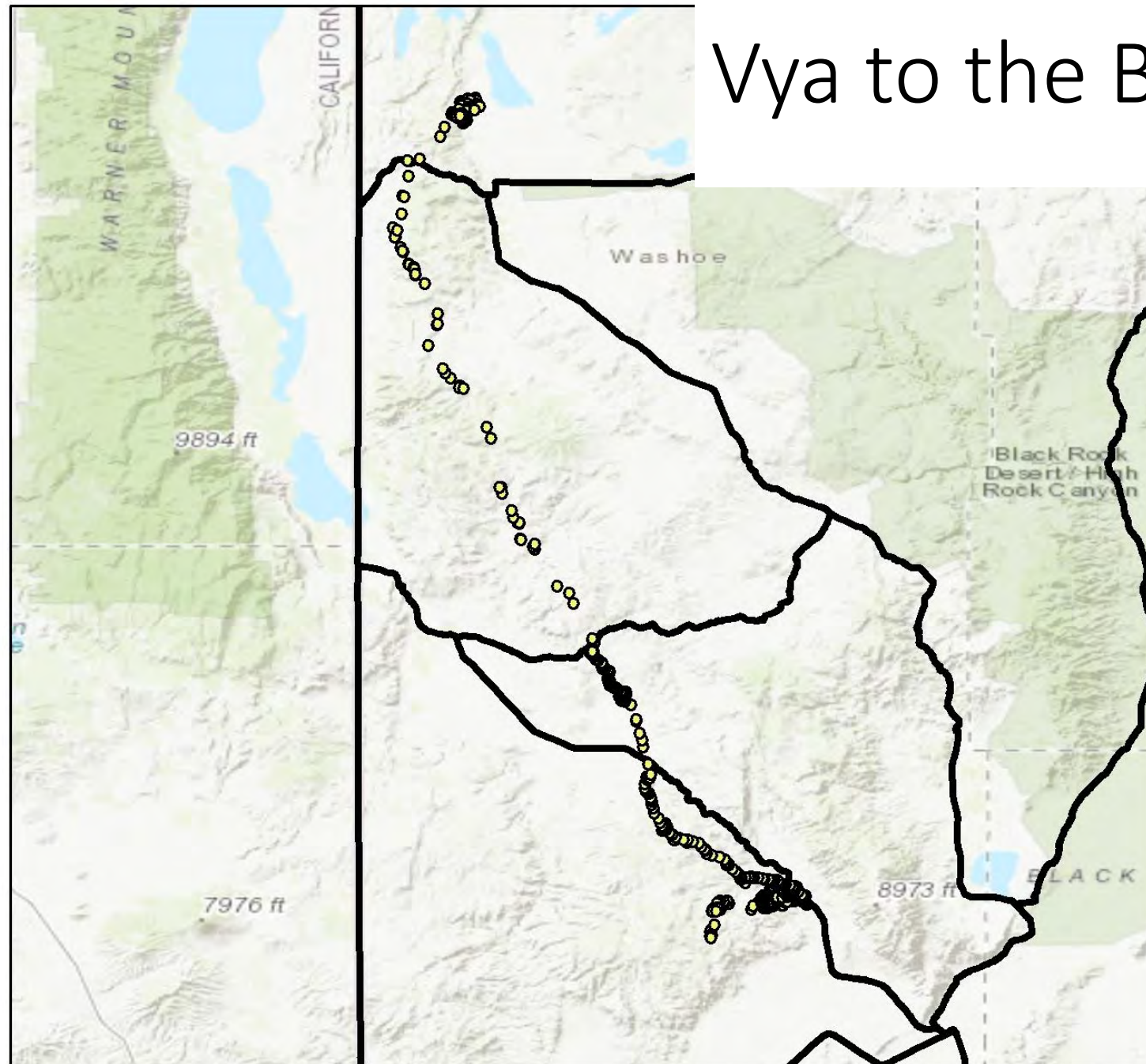


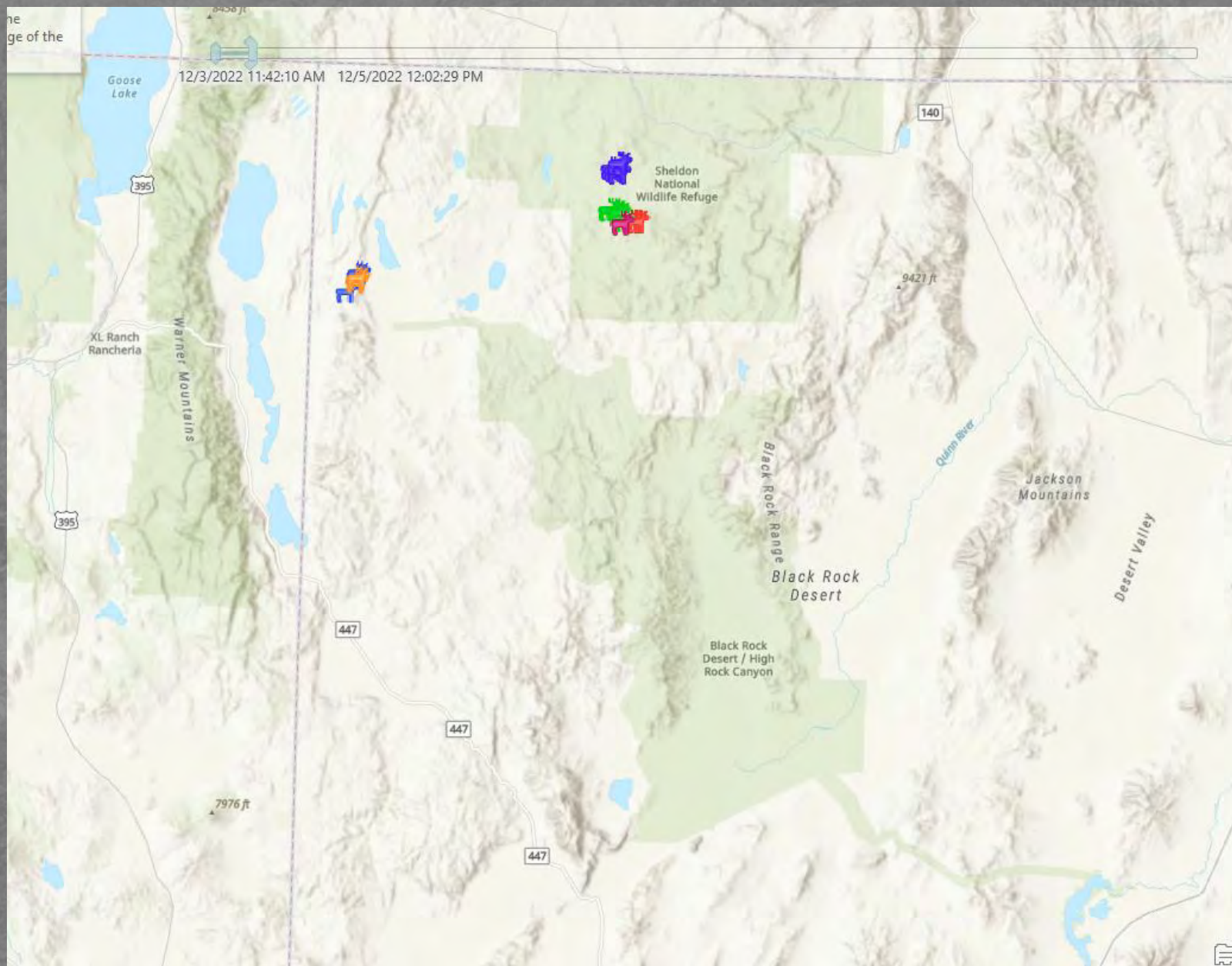
Migration routes that we
learned more about from
this year's collar data

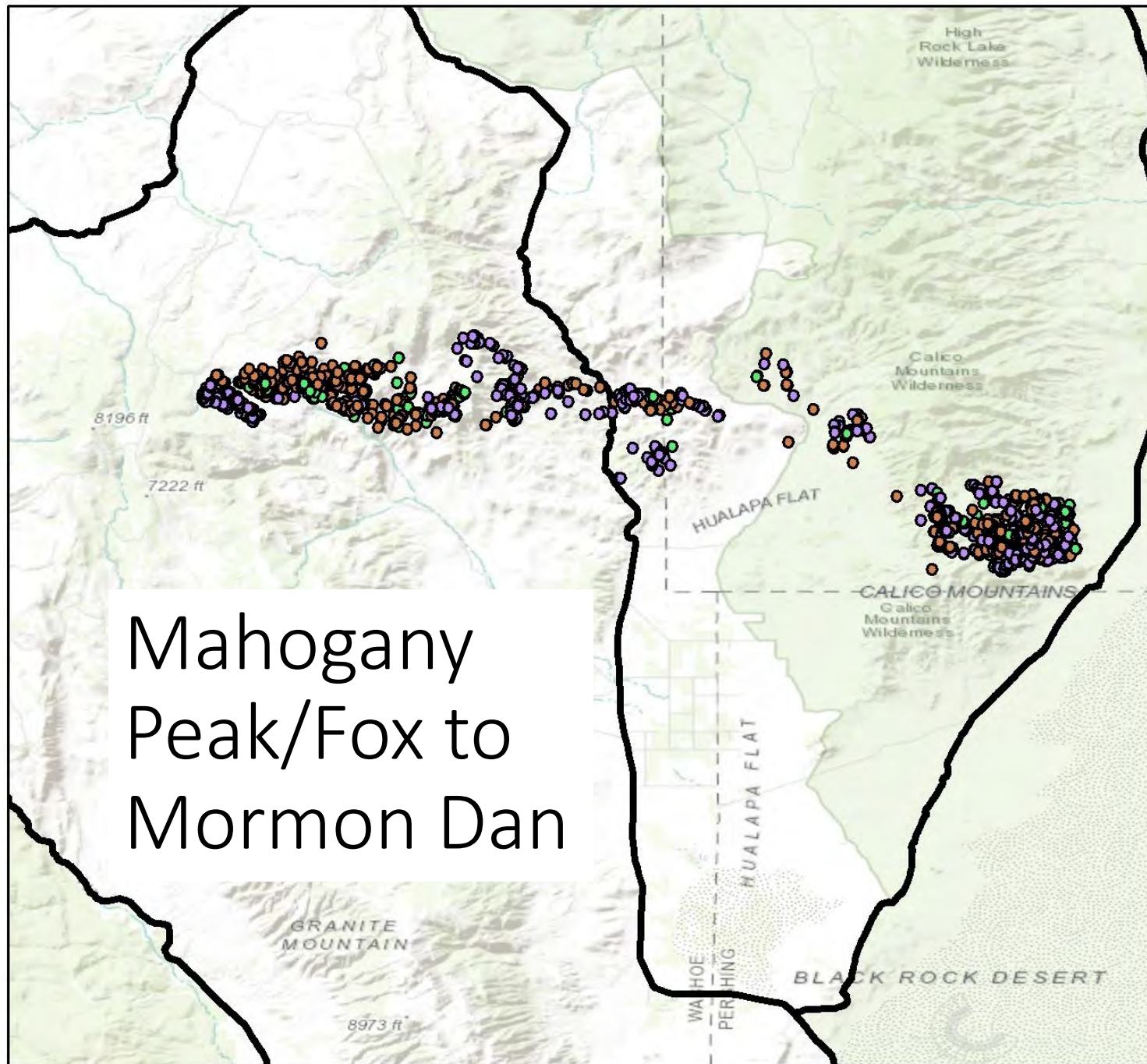




Vya to the Buffalo Hills

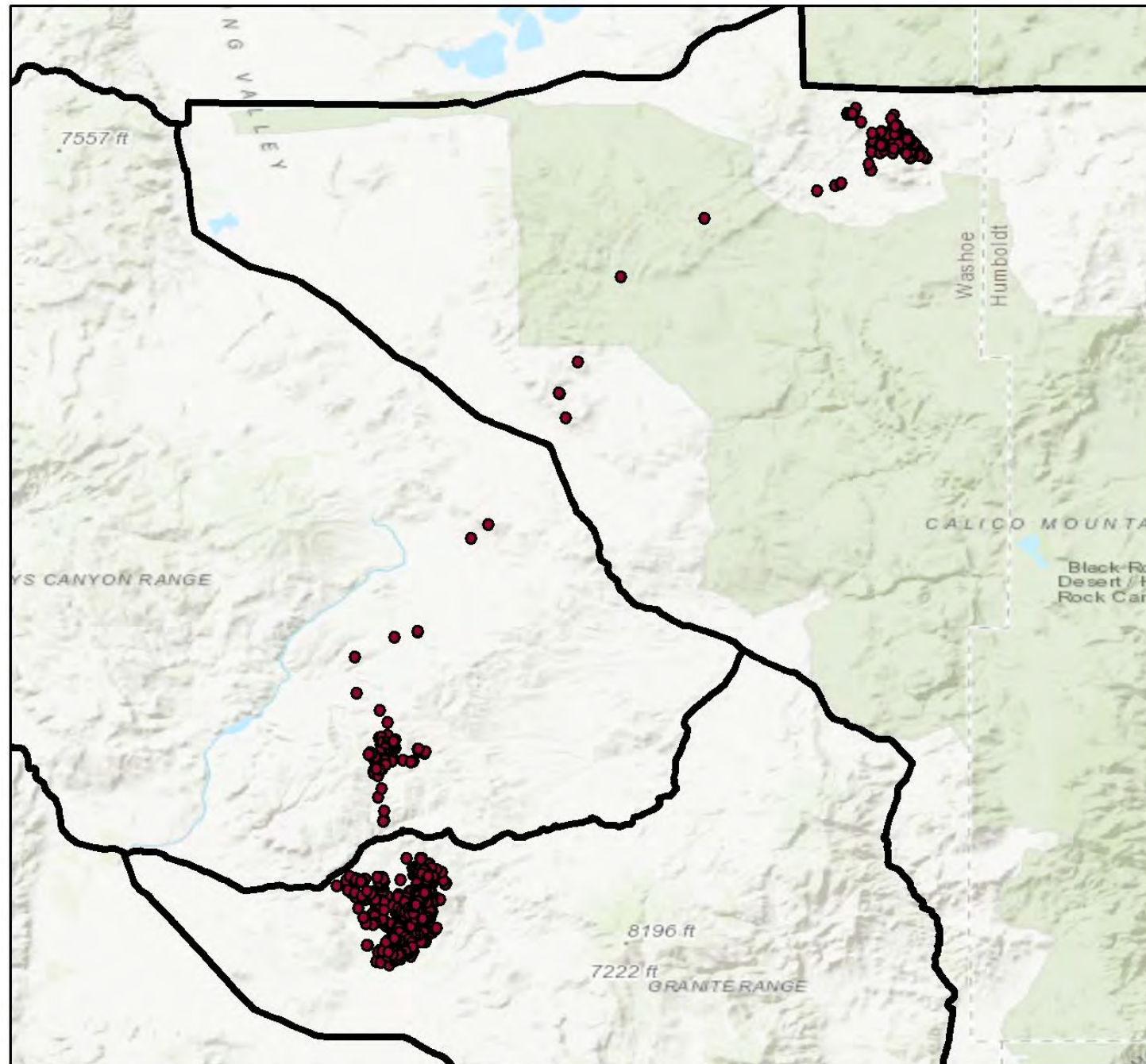


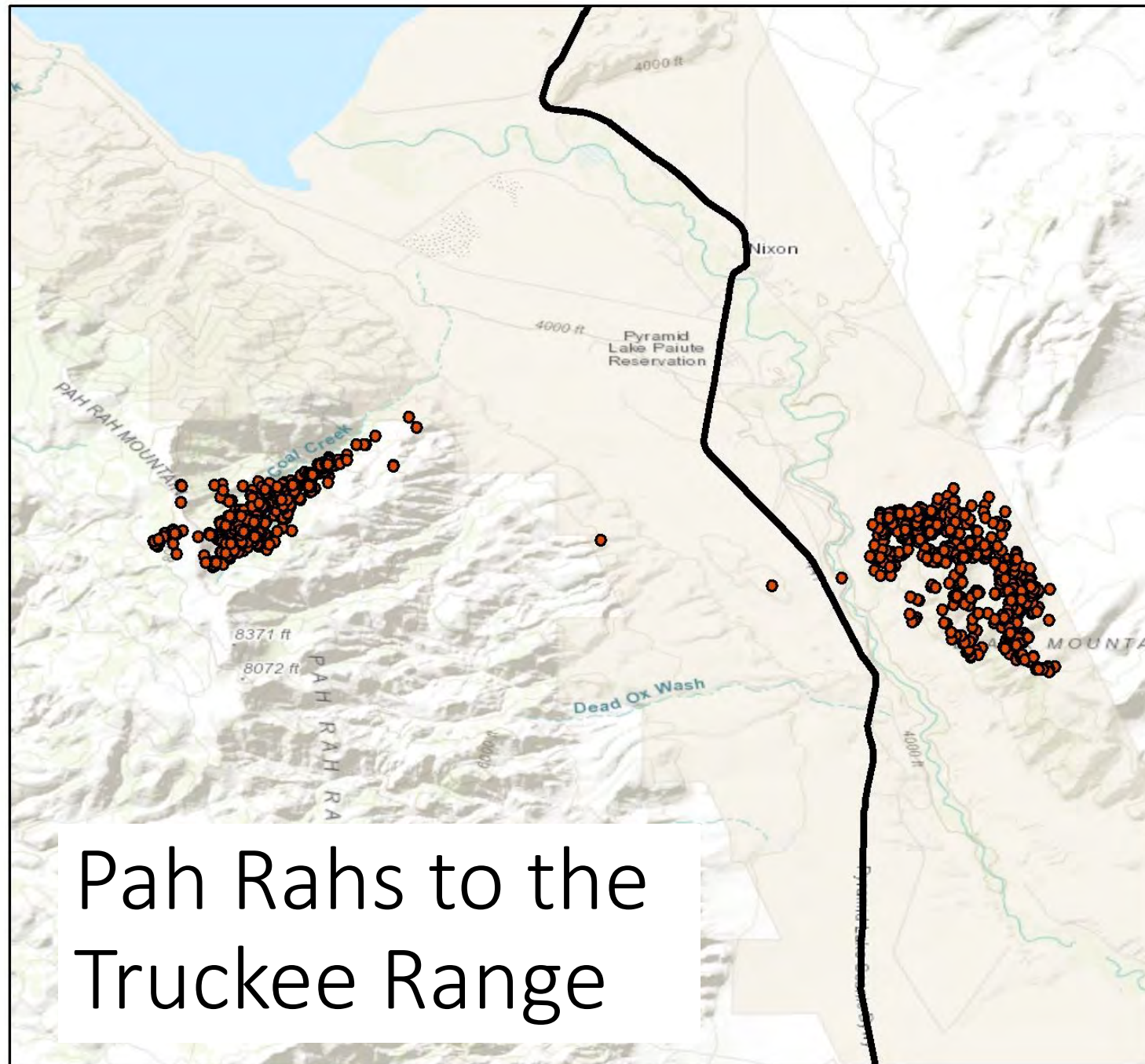


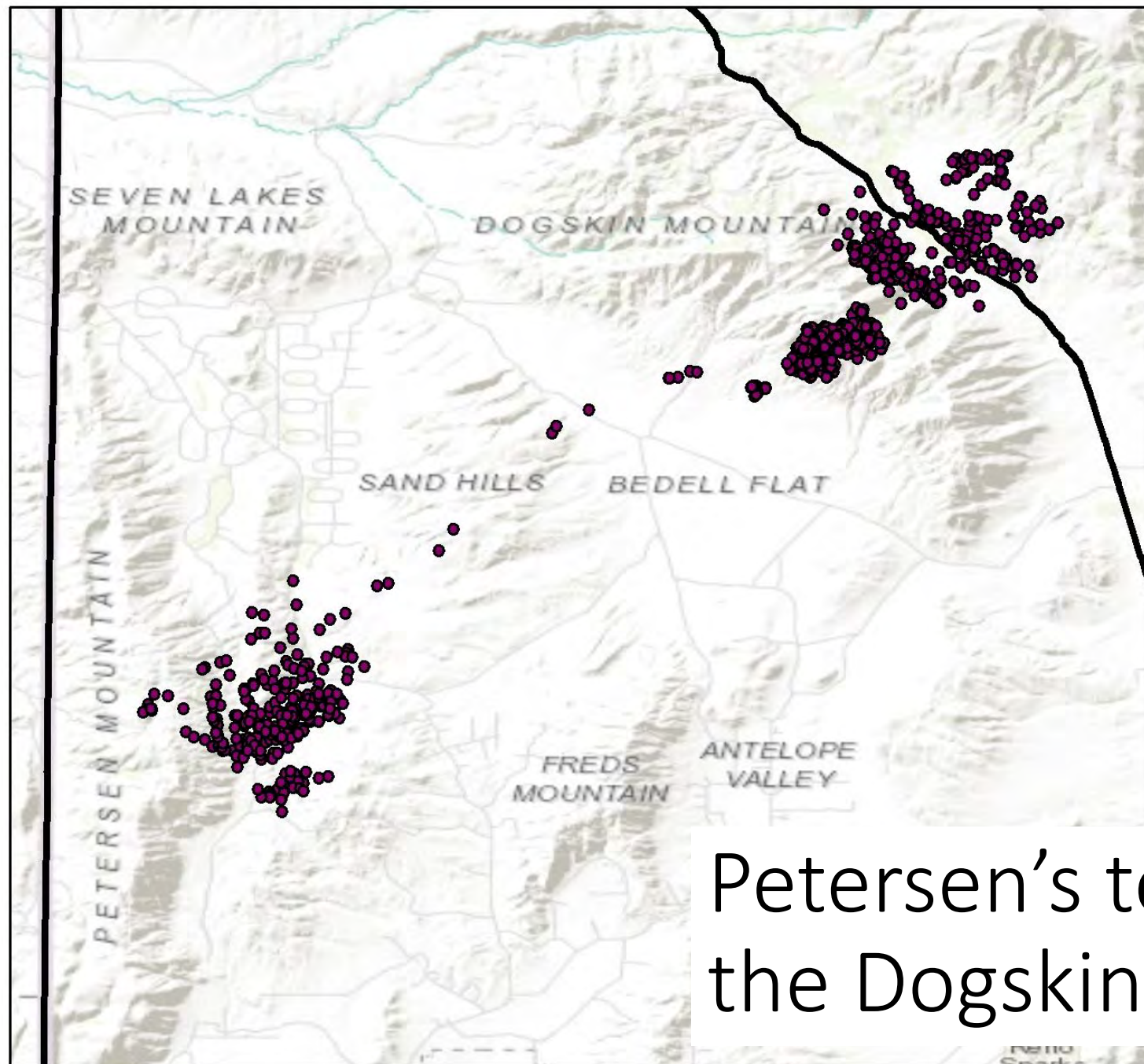


Mahogany
Peak/Fox to
Mormon Dan

Fox Mountain to Nut Mountain

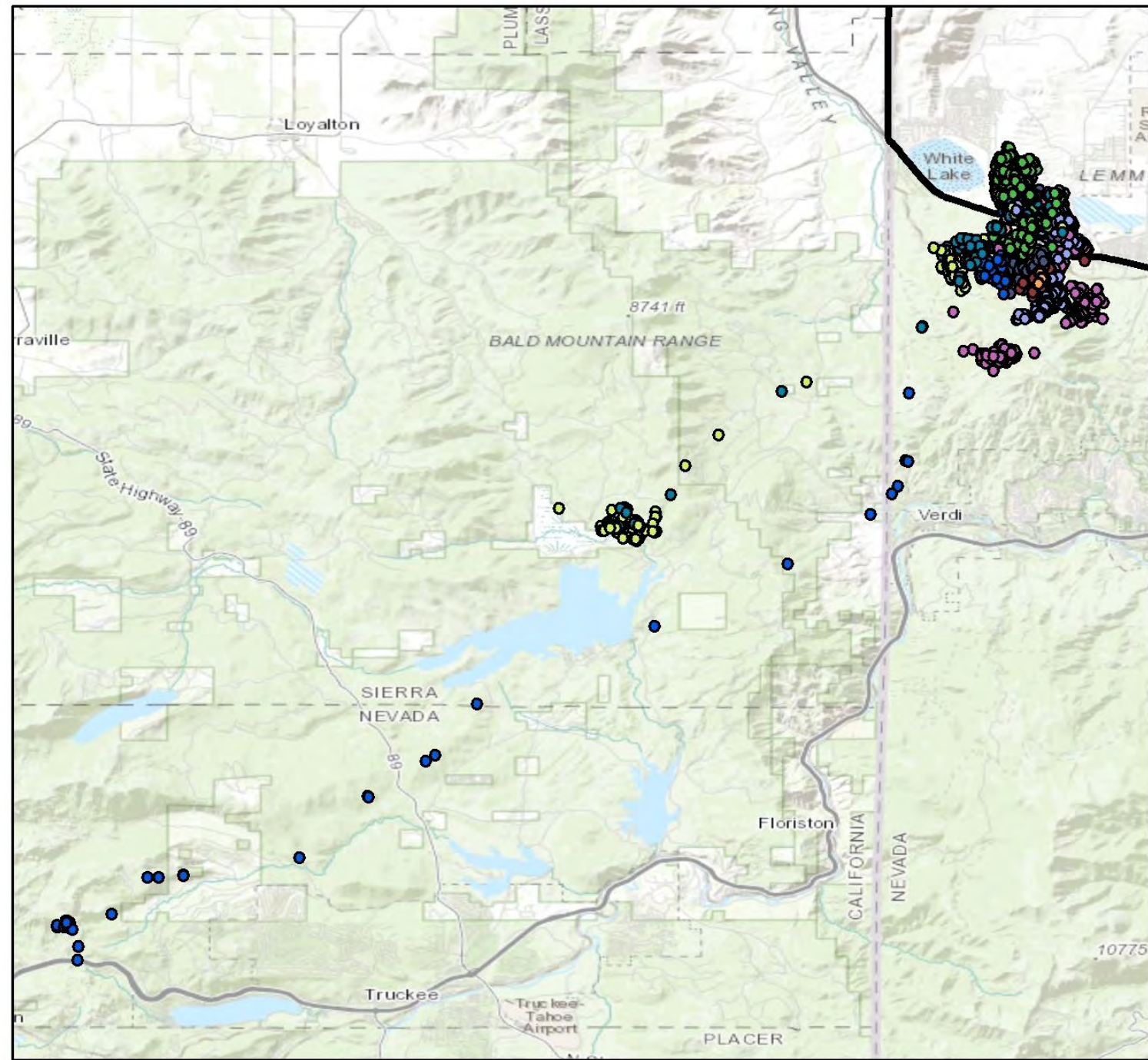






Petersen's to
the Dogskins

Granite Hills to Donner Lake





Mortalities

Year 1			
Unit	Collars	Morts	COD
011-013	8	2	2-lion
014	9	1	hbc
021	6	5	EHD, 4 lion*
022	5	1	Probable lion
033	-	-	-
Total	28	10	-



Mortalities

Year 2			
Unit	Collars	Morts	COD
011-013	8	2	coyote, lion
014	8	0	-
021	18*	1	hbc
022	3	1	lion
033	12	2	2-lion
Total	48	5	-



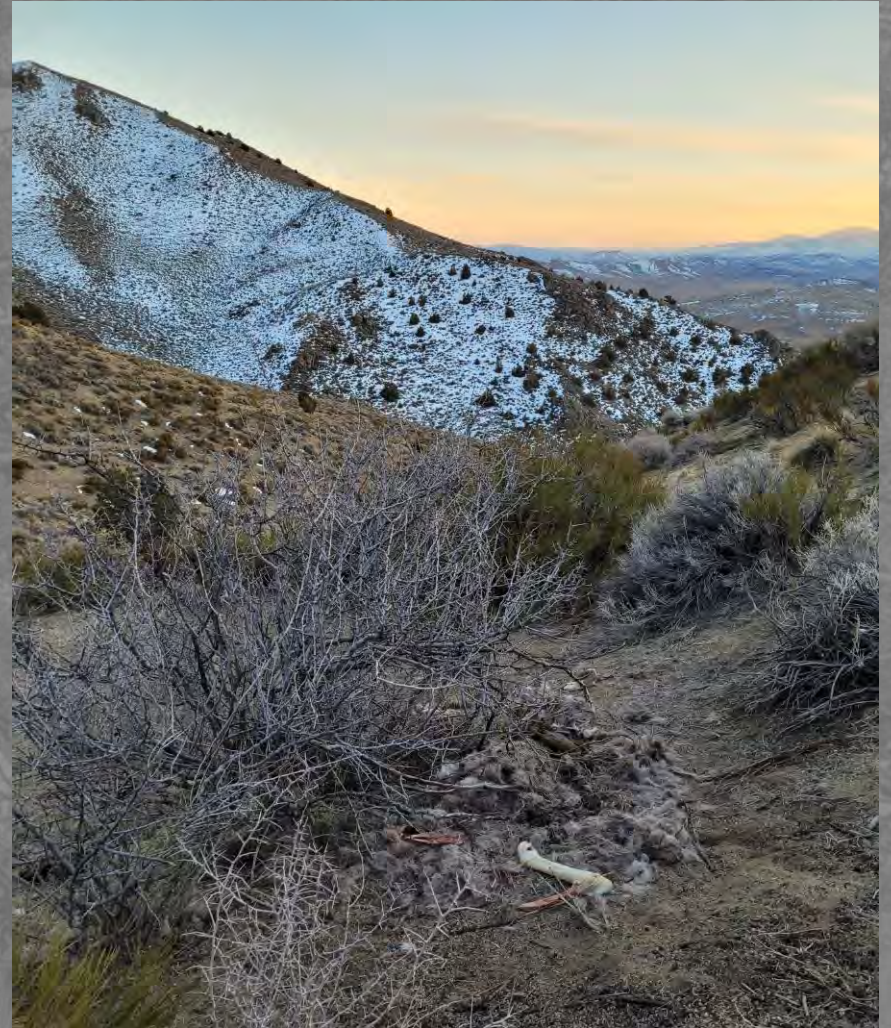
Predator work in MA 1 & 2

- In July of 2022 we had Wildlife Services start work on lion removal with focus on 014, while also responding to mortalities in surrounding units.
- In 2022 Nathan removed 9 lions from 014 (3 adult females, 1 adult male, and 5 subadults) and 1 lion from 021 (adult female)



Predator work in MA 1 & 2

- In 2023 Mitch removed:
 - 014-1 adult male, 1 young female, & had another eaten out of a trap
 - 013- 1 adult female off md mort
 - 022- subadult male off md mort
-
- Lion work on the Sheldon is expected to start in July



MA 1 & 2 Habitat Projects

- In coordination with BLM seeded 15,000 pounds into the Parsnip Fire in 015
- Coordinated with the Sheldon, Summit Lake, and the BLM to get NEPA completed for an herbicide and seeding project in NE 012/Summit Reservation/SNWR
- BLM is supportive of our Granite Spray Project and will work to complete NEPA this fall/winter so we can spray the following year



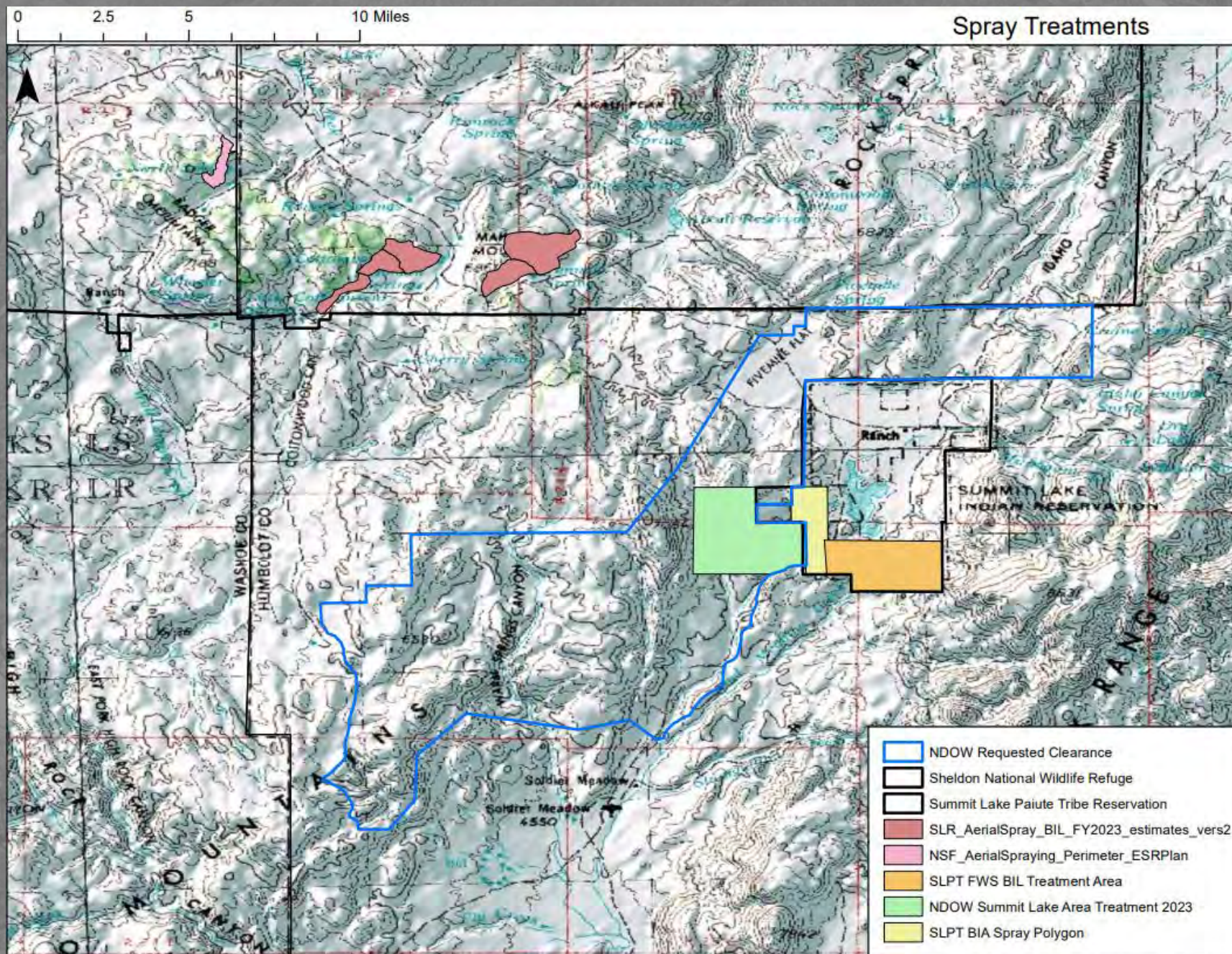
Seeding in 015 in Parsnip Fire scar & Dry Valley Rim

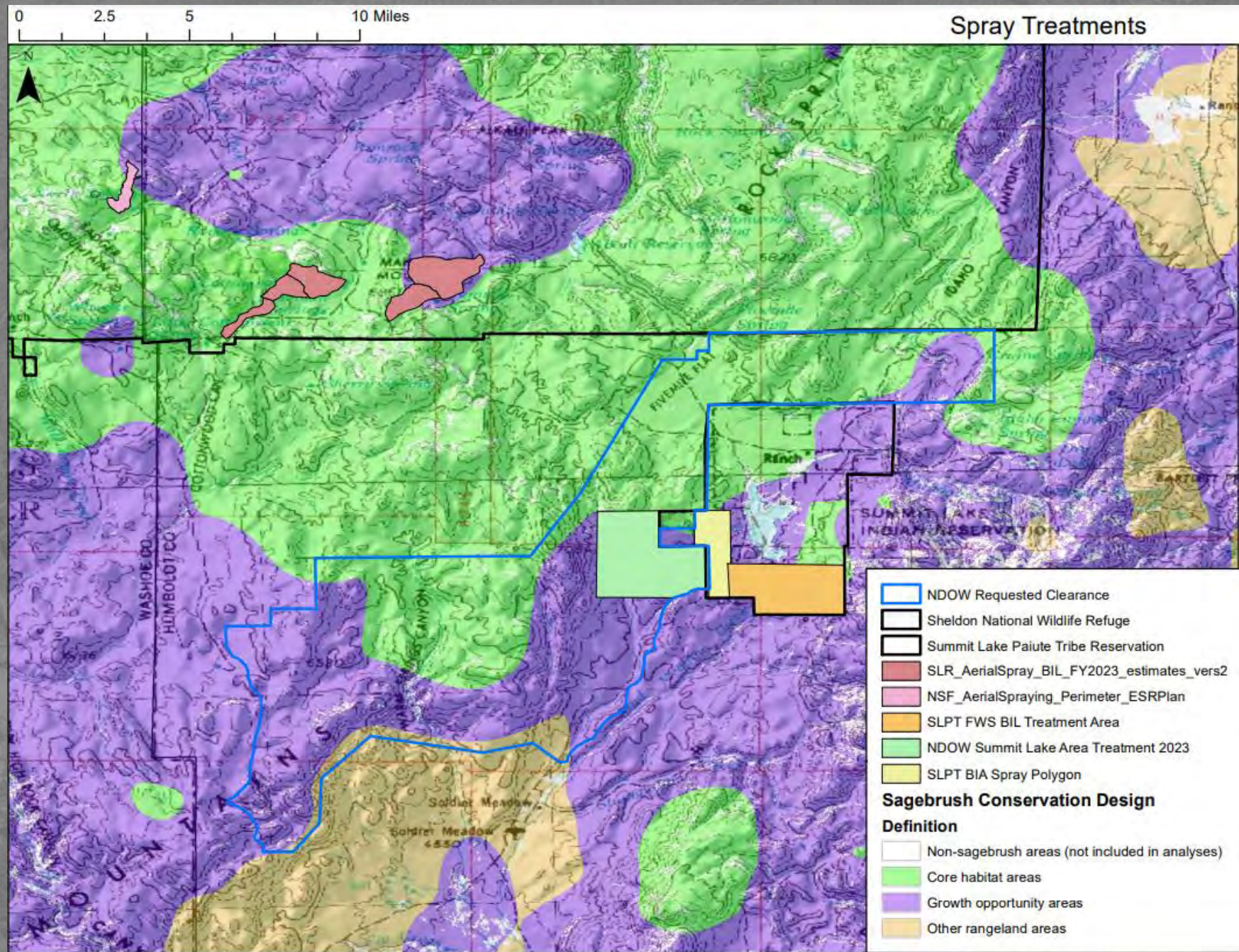
Parsnip (R4) Plateau/Bench Aerial Mix

Species, Cultivar	SSID	Lot Number	App. Rate (bulk lbs/ac)	Total Lbs.	NDOW Seed	BLM Seed
Wyoming Sage, NBR 15-20/6-12	2919	W15-N	0.5	800	400	400
Forage Kochia, Blend		21-90	0.7	1,100	1,100	
Forage Kochia, Immigrant		21-50	0.0	50	50	
Siberian Wheatgrass, Vav II	2037	BTS-2129	0.5	800	800	
Siberian Wheatgrass, Vav II	2036A	W42-005-5237C	1.5	2,500	2,200	300
Sherman Big Bluegrass	2271	500-211-118A	1.0	1,650	1,150	500
Snake River Wheatgrass, Secar	2191	BF110A136527	1.8	3,000	3,000	
Snake River Wheatgrass, Secar	1151	9SI550-32	0.1	200	200	
Snake River Wheatgrass, Secar	1152	H4-19-92671	0.1	95	95	
Bottlebrush Squirreltail, Turkey Lake	2104A	442-552-176B1	0.7	1,200	1,200	
Bottlebrush Squirreltail, Toe Jam	2116	2062-1	0.3	450	450	
Rocky Mountain Beeplant	1377	B-6	0.5	740	740	
Western Yarrow, Eagle	2423	NBS-BP19-EAG-3	0.0	44	44	
Western Yarrow, Eagle	1336	1910-2	0.1	100	100	
Totals			7.76	12,729	11,529	1,200

Parsnip (R4) Steep Terrain Aerial Mix

Species, Cultivar	SSID	Lot Number	App. Rate (bulk lbs/ac)	Total Lbs.	NDOW Seed	BLM Seed
Wyoming Sage, NBR 15-20/6-12	2919	W15-N	0.5	920	920	
Forage Kochia, Immigrant		21-50	0.8	1,300	1,300	
Totals			1.31	2,220	2,220	-

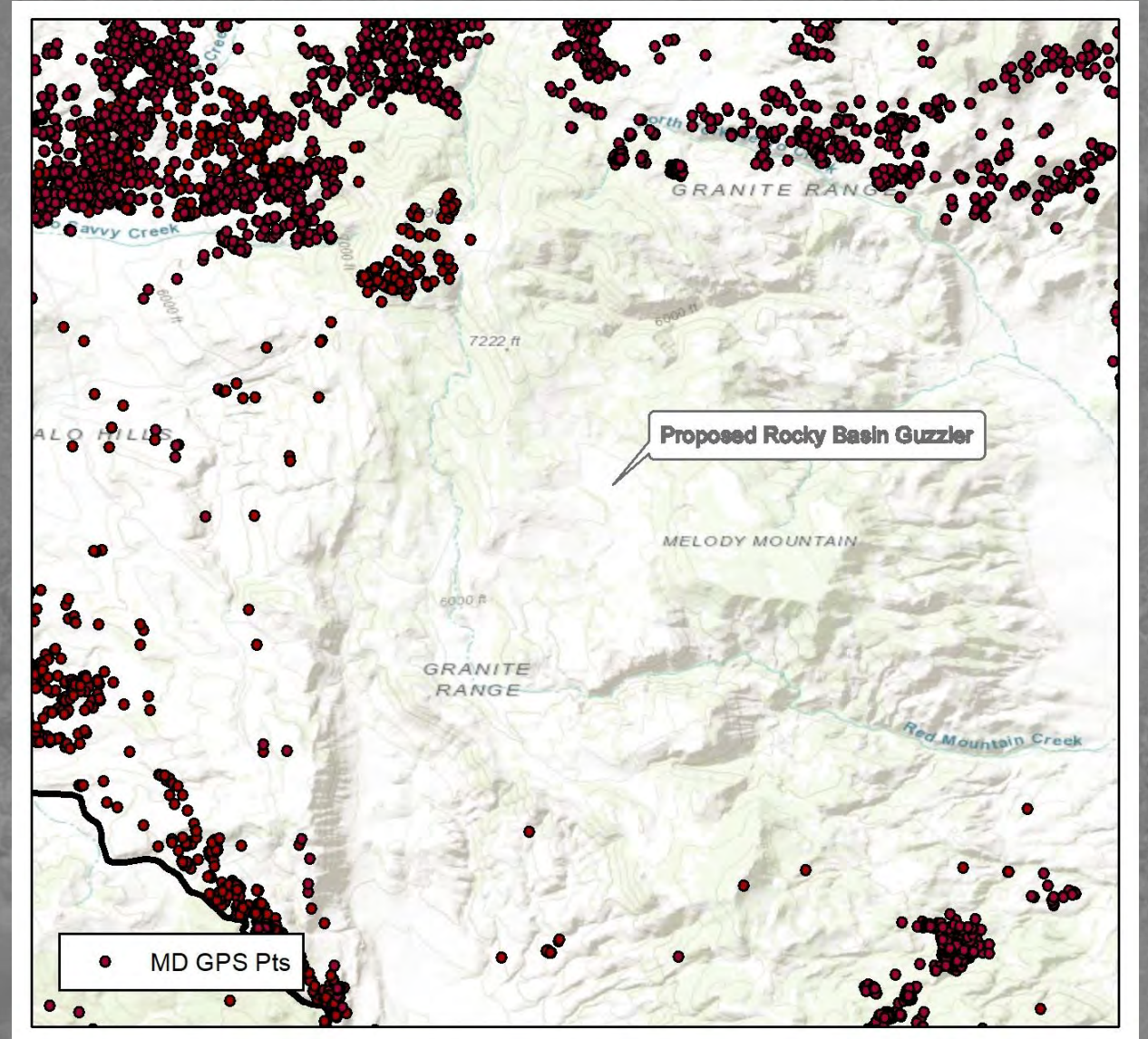
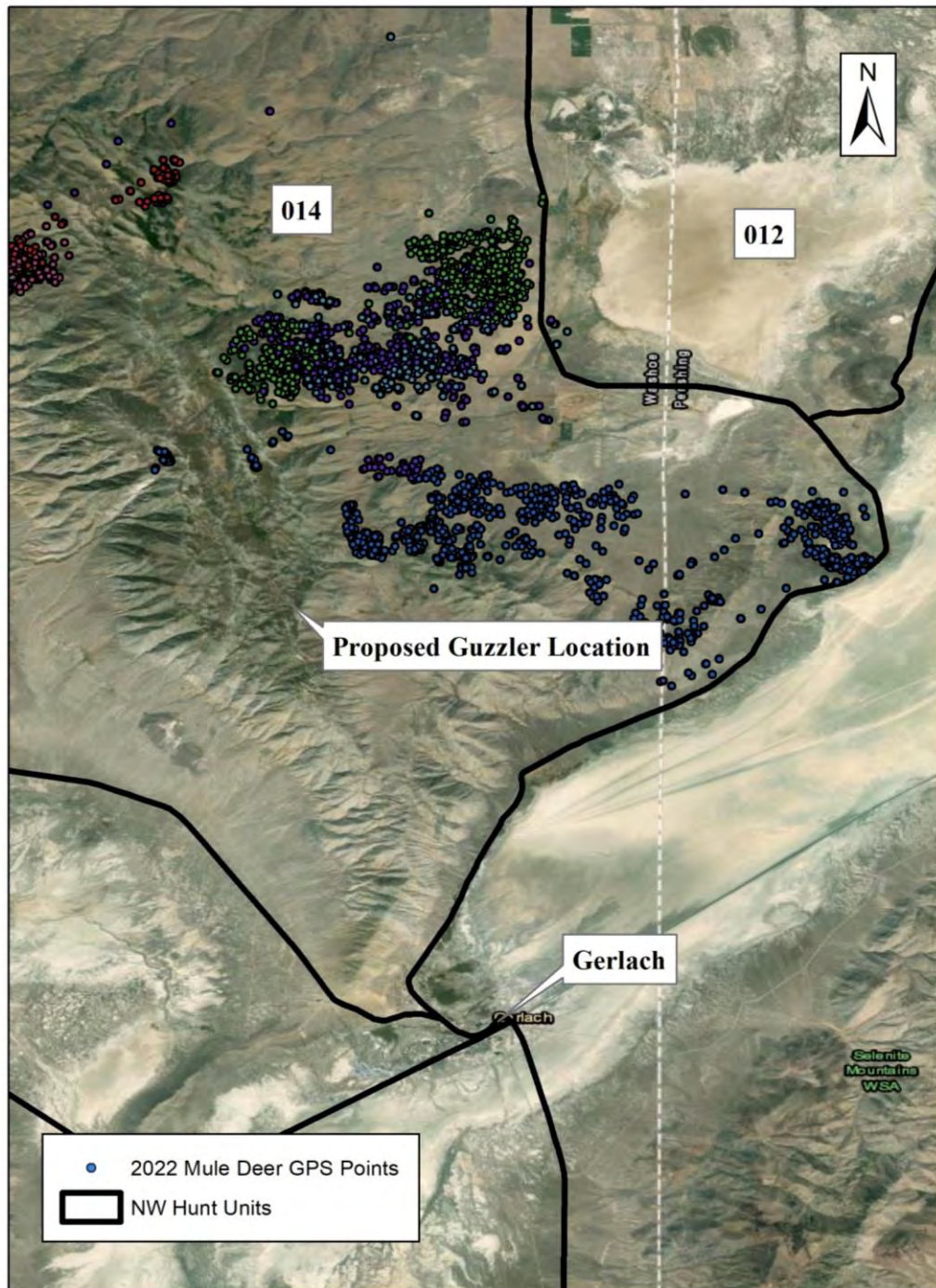




MA 1 & 2 Habitat Projects

- Slung fence material for 6 springs, and constructed fence around 3 (Orange, Mountainview, Rowland). The rest are slated for this summer through next.
- Built a guzzler on Sheep Peaks
- Currently working with BLM on a DNA for the Granite Guzzler



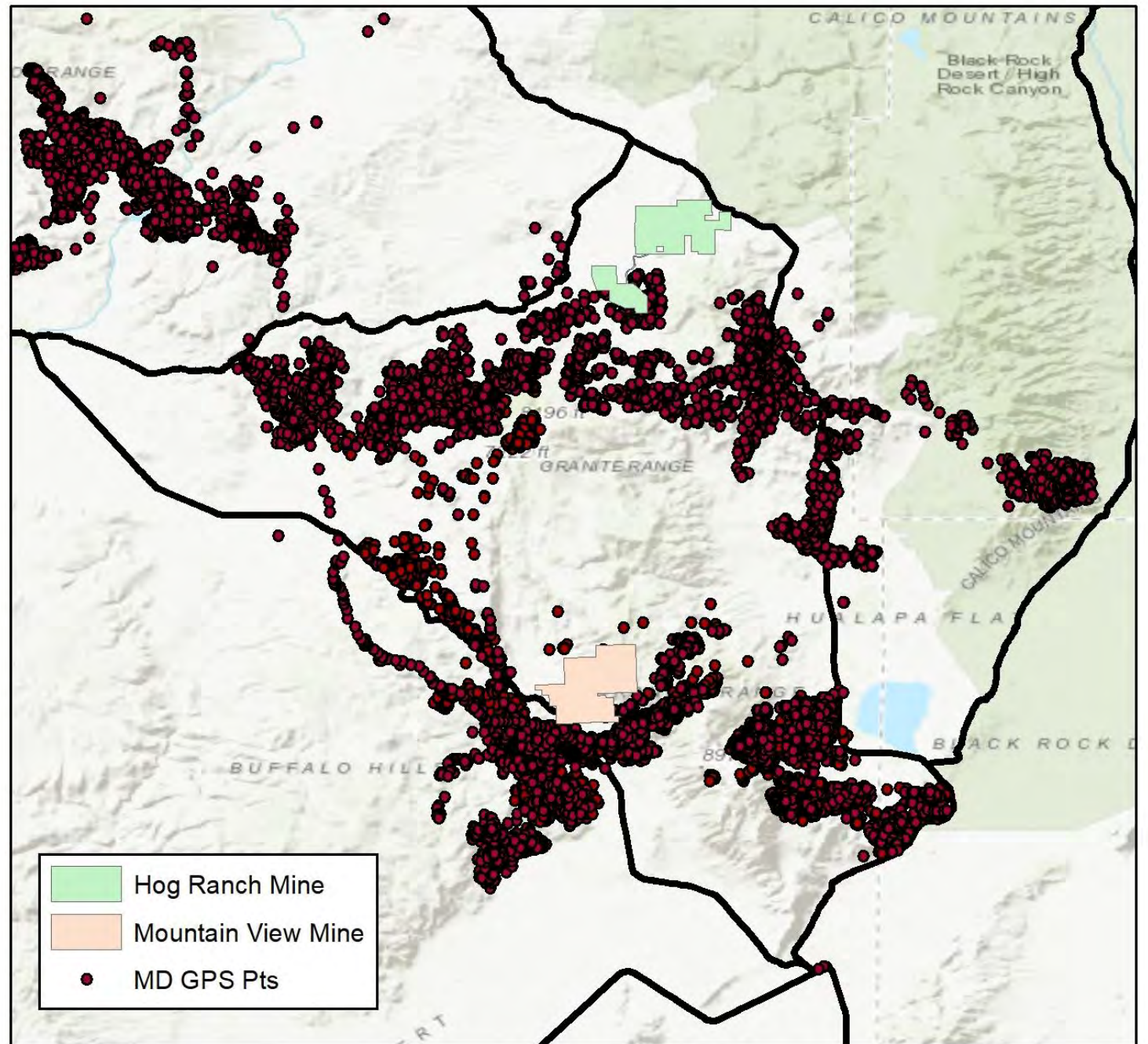


Potential Development

- Hog Ranch Mine (014)
- Mountainview Mine (014)
- Geothermal Mine (014)
- Solar farms of MA 2 (021 & 022)
- Expansion of Reno into winter range and migration routes (MA 2)
- Truckee Meadows Land Bill-conversion of WSA/Wilderness



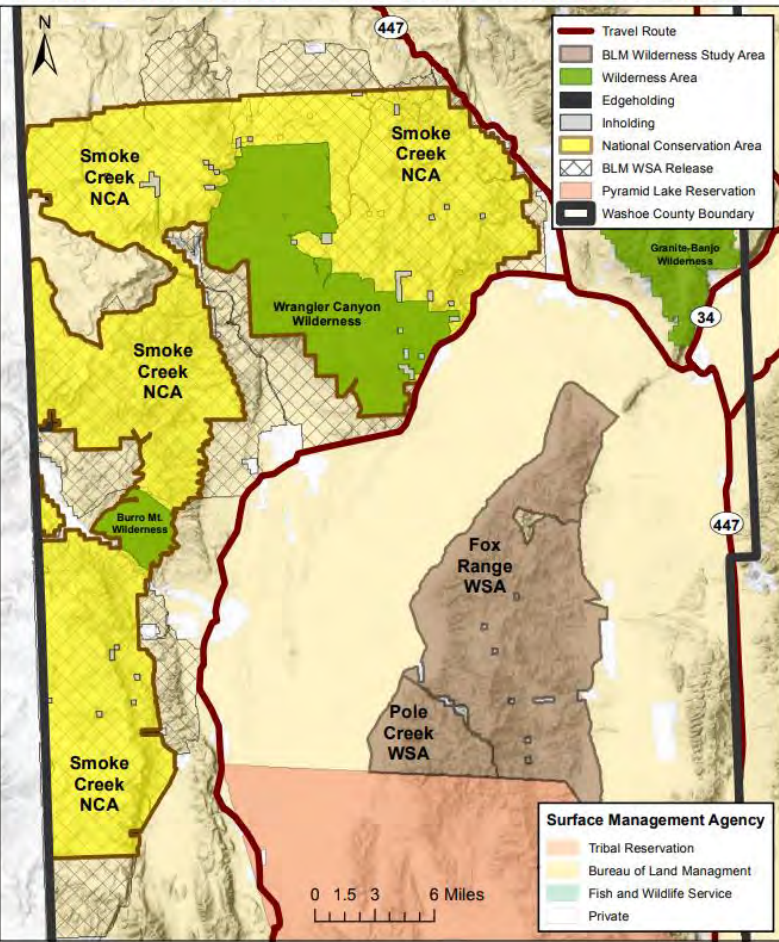
Mining Activity



Truckee Meadows Lands Bill

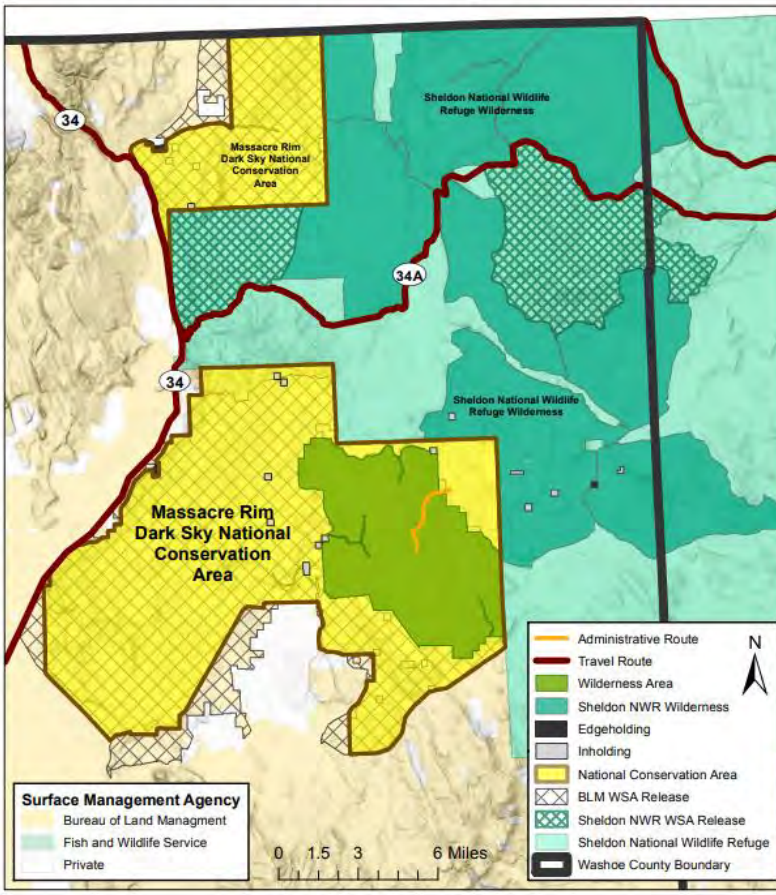
Truckee Meadows Public Lands Management Act:
Smoke Creek National Conservation Area and Wilderness

3/23/2023



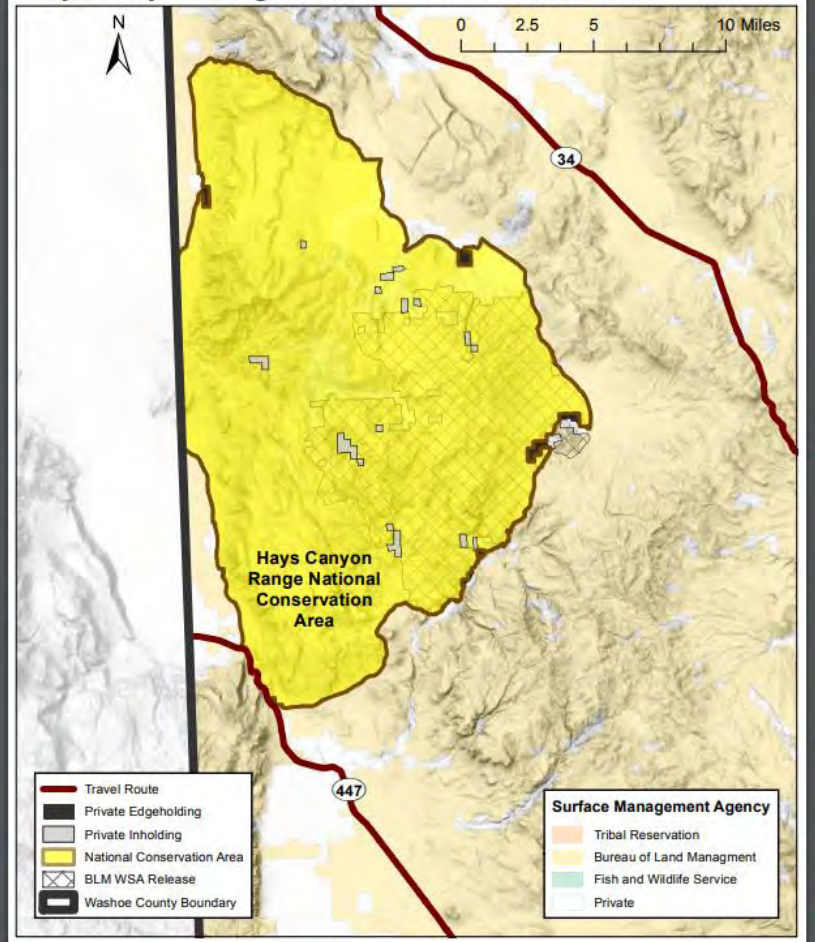
Truckee Meadows Public Lands Management Act:
Massacre Rim Dark Sky National Conservation Area
and Sheldon National Wildlife Refuge Wilderness

3/23/2023



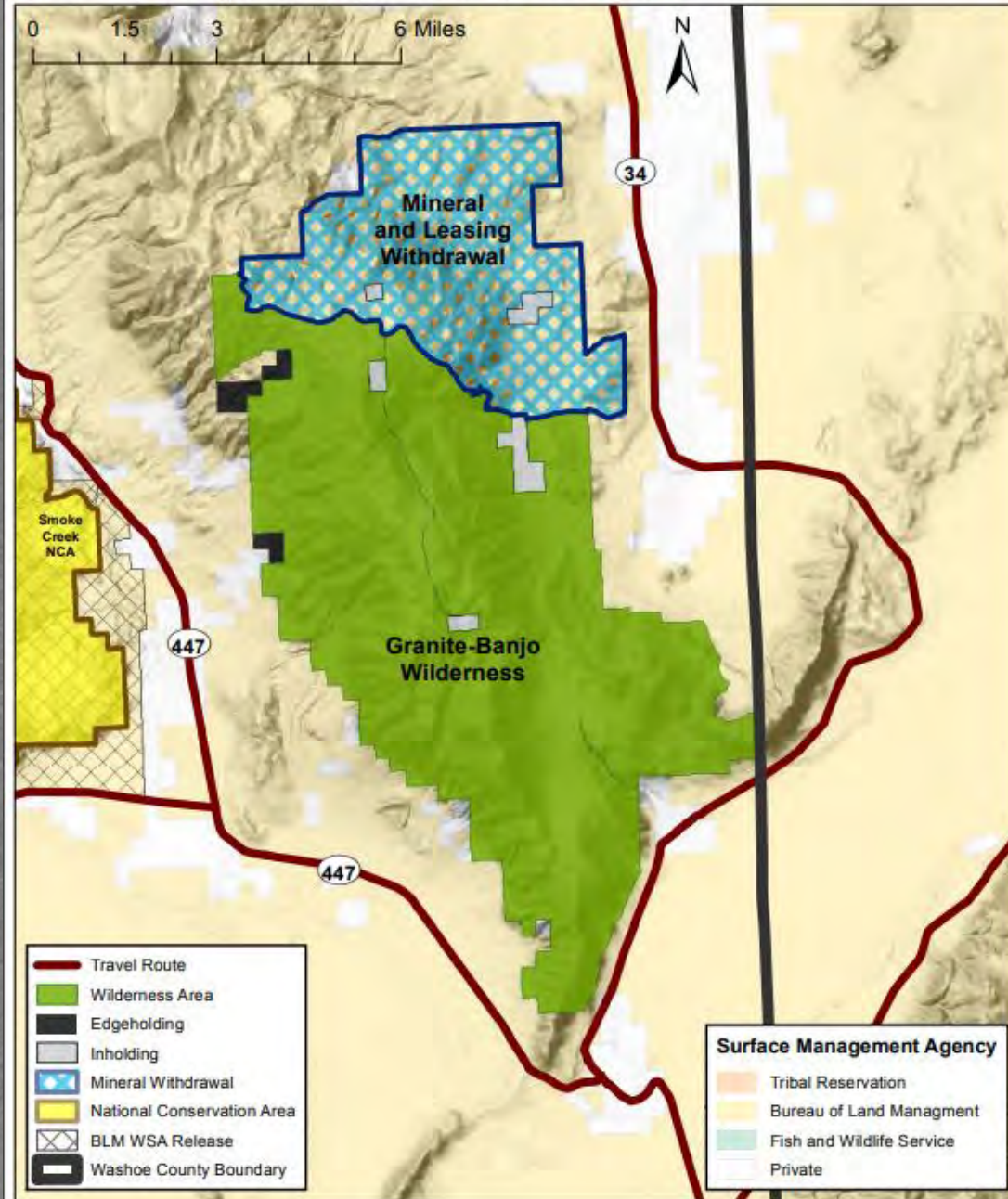
Truckee Meadows Public Lands Management Act:
Hays Canyon Range National Conservation Area

3/23/2023



Truckee Meadows Public Lands Management Act: Granite-Banjo Wilderness and Withdrawal

3/23/2023



A dark, atmospheric landscape photograph. The foreground is a vast field of low-lying, brownish vegetation. In the background, a range of mountains is visible under a dark sky. The word "Discussion:" is centered in the middle of the image in a white, serif font, with a white horizontal line underneath it.

Discussion:
