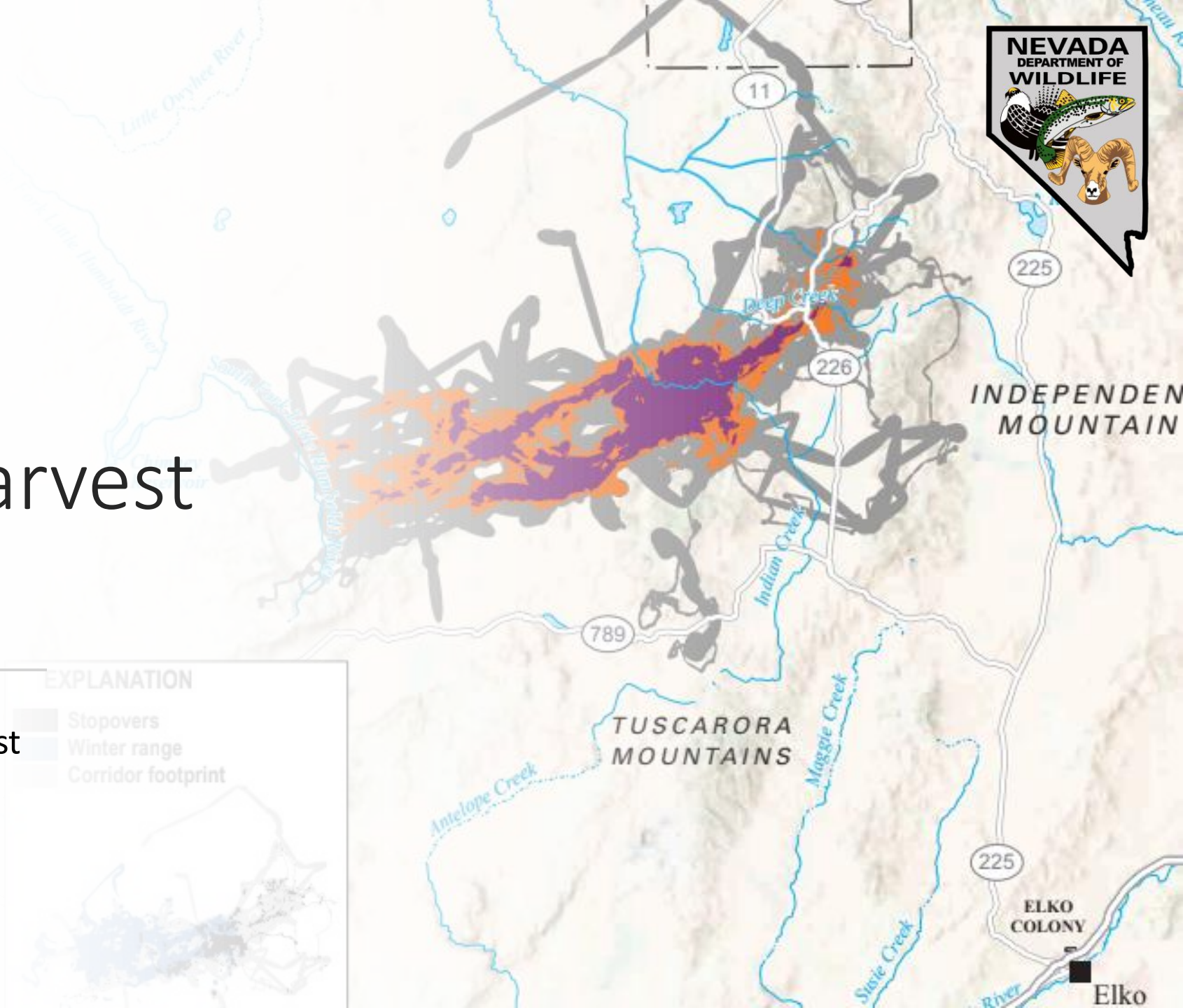


Elk Status & Harvest Trends

Cody McKee, Elk & Moose Specialist

5 May 2024

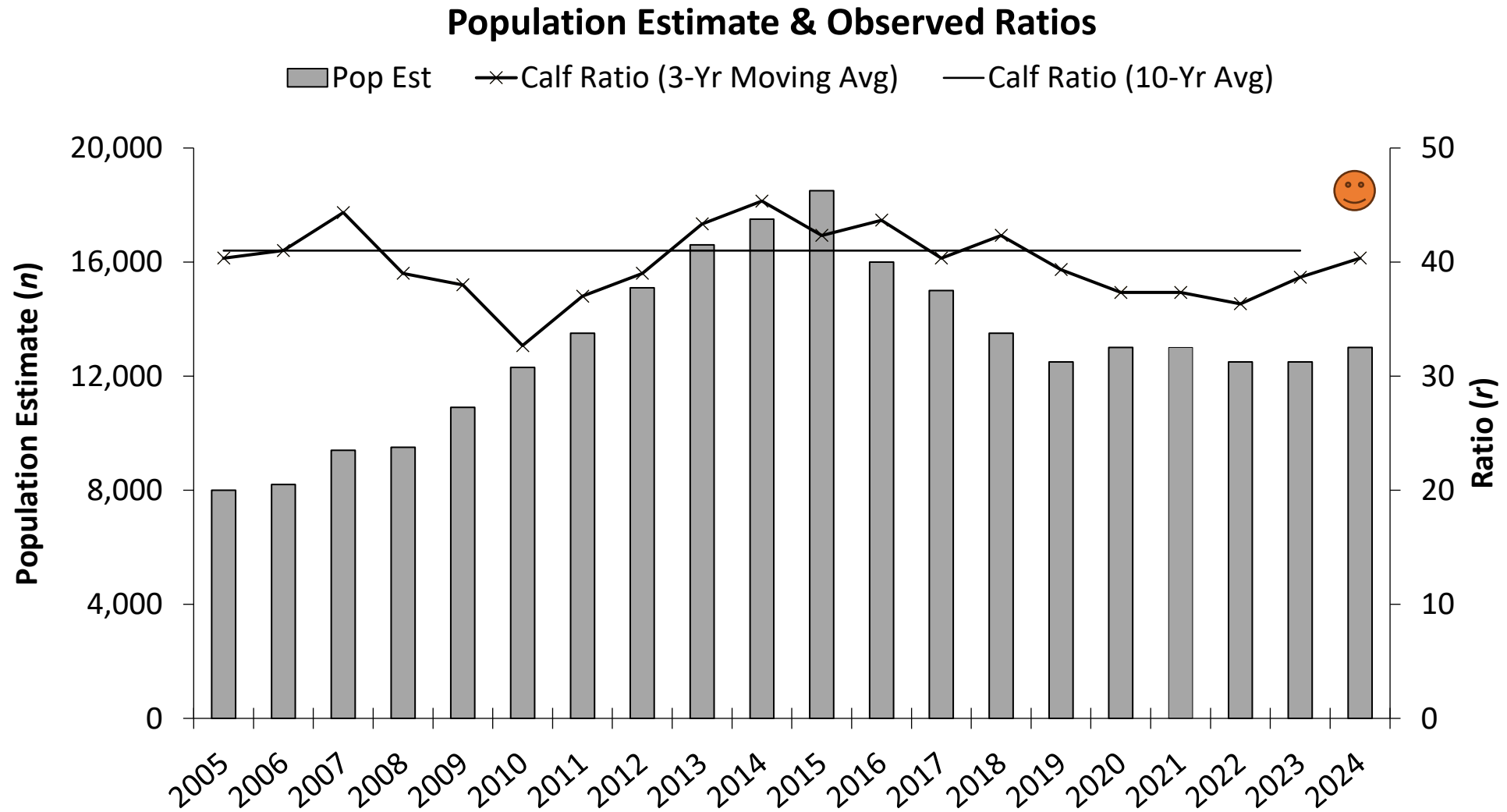


Elk Status Overview

- Most herds within +/-10% of population objectives. Exceptions:
 - 078, 105-107, 109 &
 - 231(?)
- Antlerless quota recommendations are increasing in response to elevated calf production.
- Harvest metrics for antlered elk continue to indicate an exceptional hunting experience.



Elk Population & Recruitment Trends



Harvest Trends & Objectives

Standard Areas:

25-35% 50-in Beams

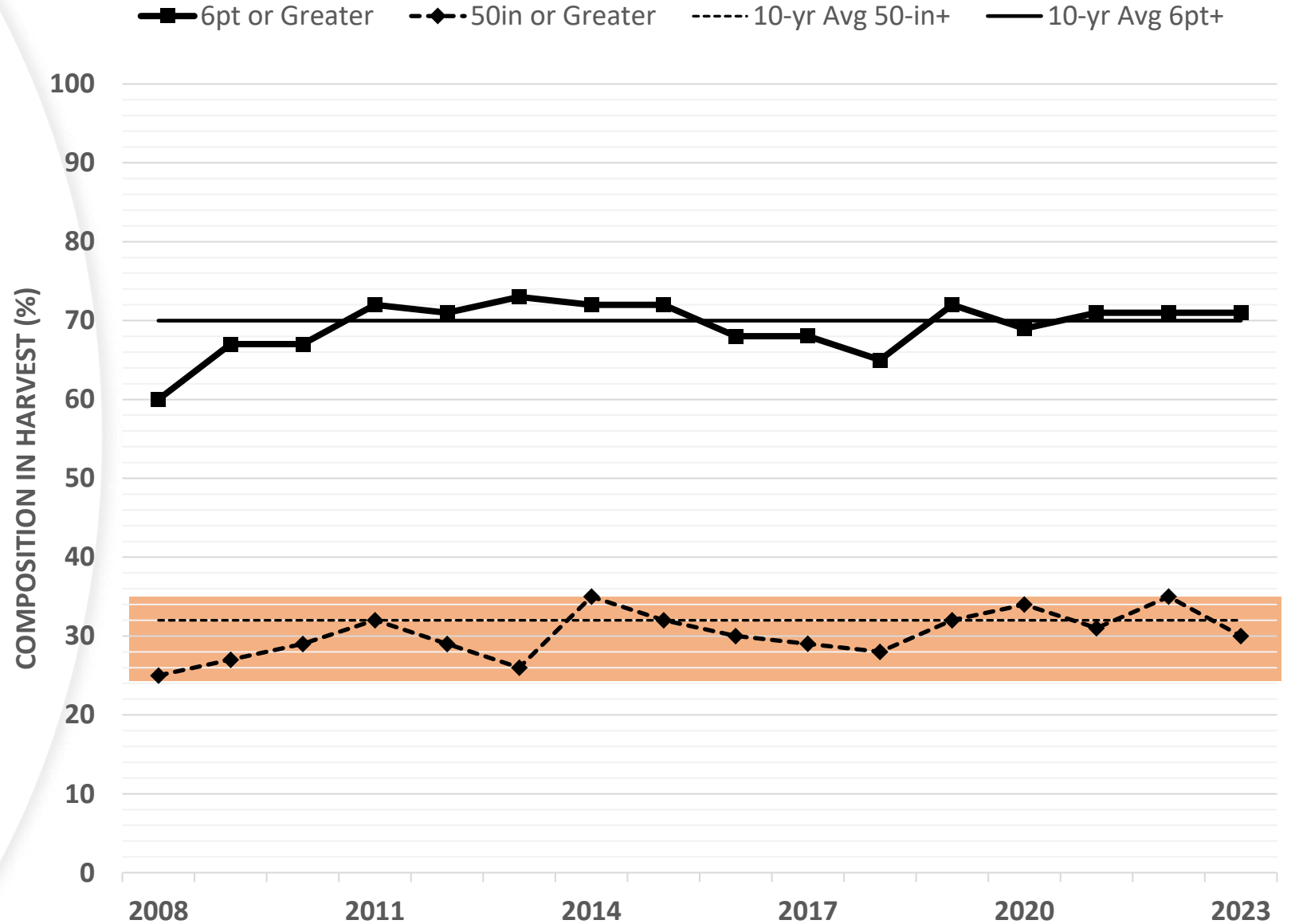
Alternative Area:

35-45% 50-in Beams

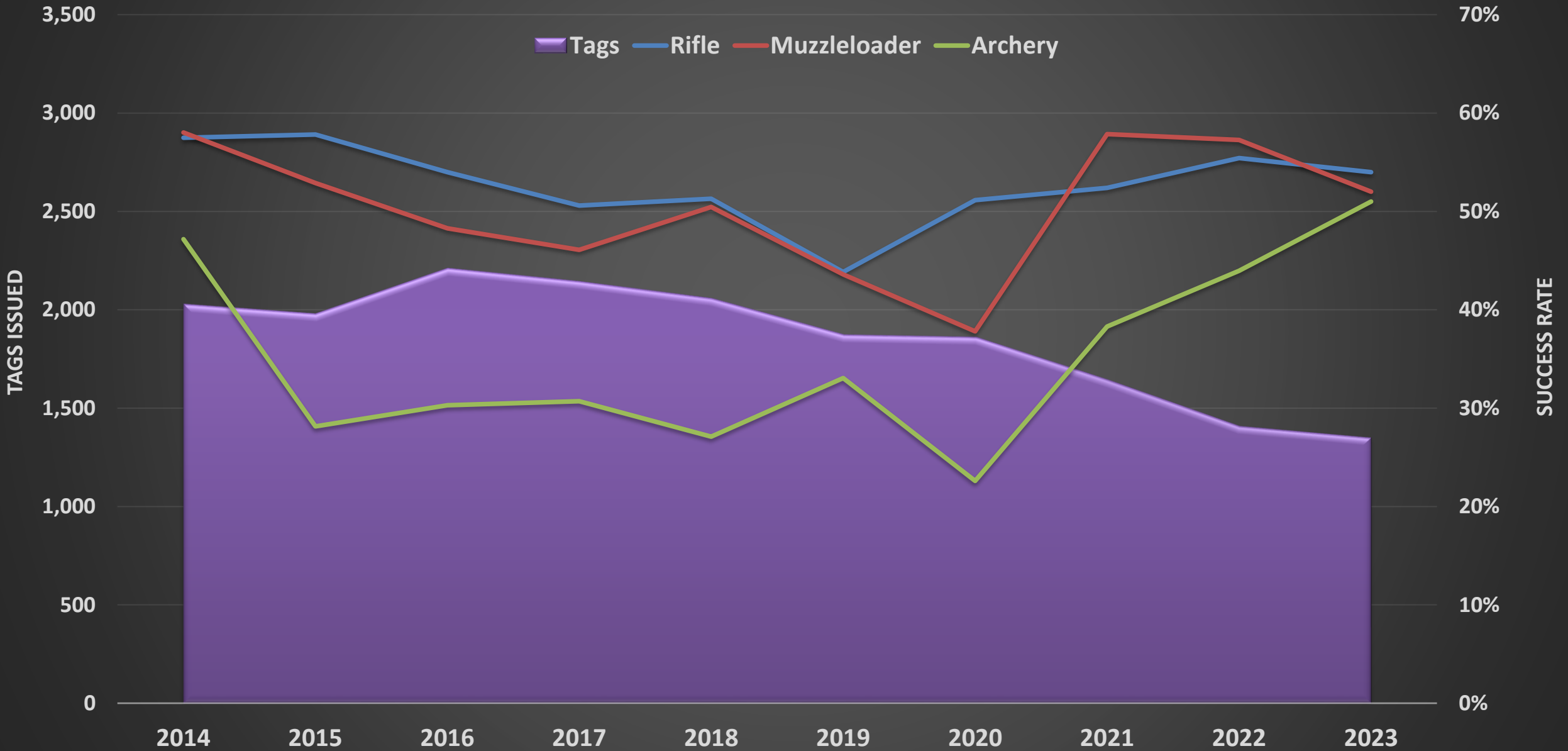
Non-Standard Areas:

Review of Harvest

6pt Harvest and Beam Composition of Antlered Elk



Trends in Success by Weapon for Resident Bull Hunters, 2014-2023





Statewide Quota Recommendations

1. Antlered Elk & Spike Quotas:

-1% less than 2023 to 1,779 tags

Antlered – 1,500 tags

Spike – 279 tags

2. Antlerless Quotas:

-14% more than 2023 to 2,581 tags

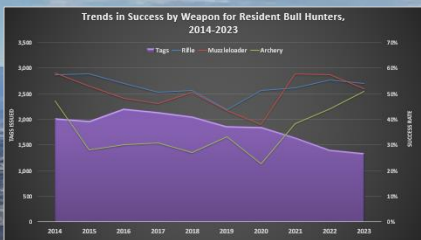
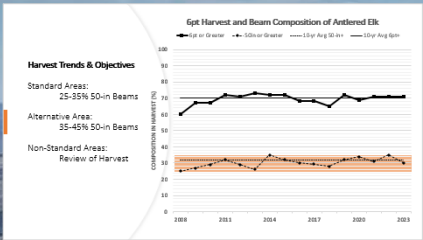
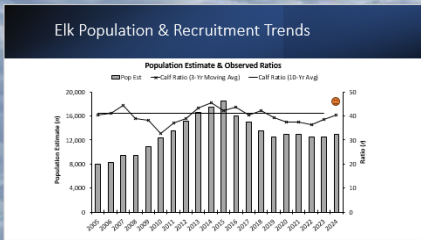
3. Overall Quotas:

-7.5% more than 2023 to 4,360 tags

Elk Status Overview



- Most herds within +/- 30% of population objectives. Exceptions:
 - 076, 100, 827, 808 & 231(7)
- Antlerless quota recommendations are increasing in response to elevated calf production.
- Harvest metrics for antlered elk continue to indicate an exceptional hunting experience.



Statewide Quota Recommendations

1. Antlered Elk & Spike Quota:
 - 1% less than 2023 to 1,779 tags
 - Antelope - 1,000 tags
 - Spike - 279 tags
2. Antlerless Quota:
 - +1% more than 2023 to 2,383 tags
3. Overall Quota:
 - +7.5% more than 2023 to 4,360 tags



Questions?

cmckee@ndow.org

www.ndow.org

