

CR 24-12: Recommended Moose Quota

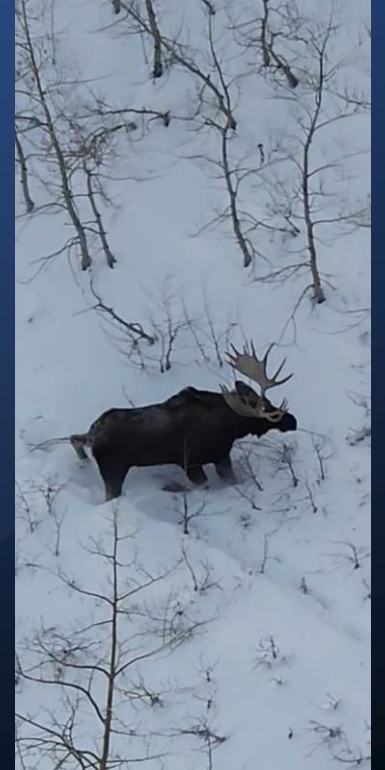


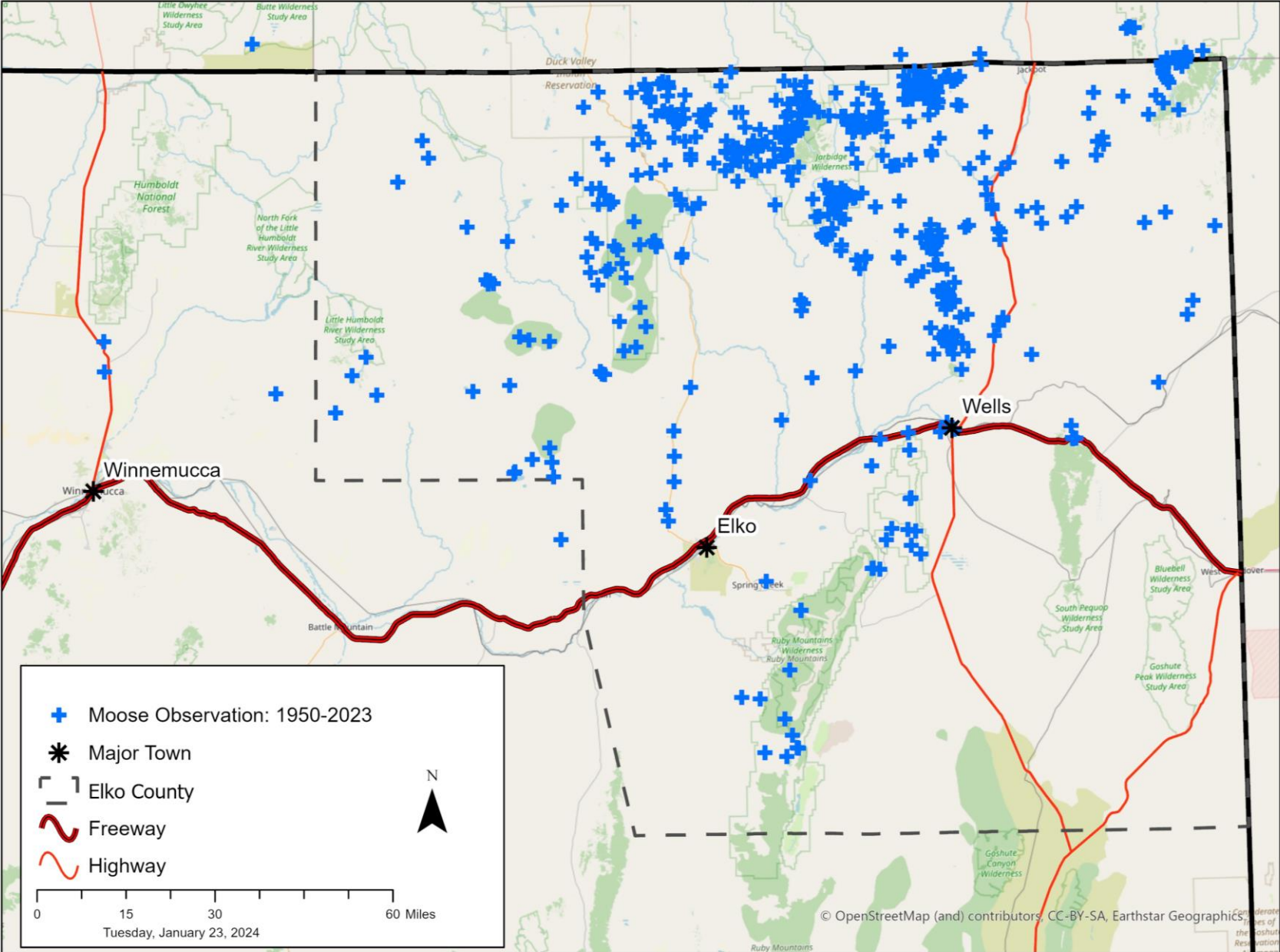
Photo: Travis Allen, NDOW

Presented by:

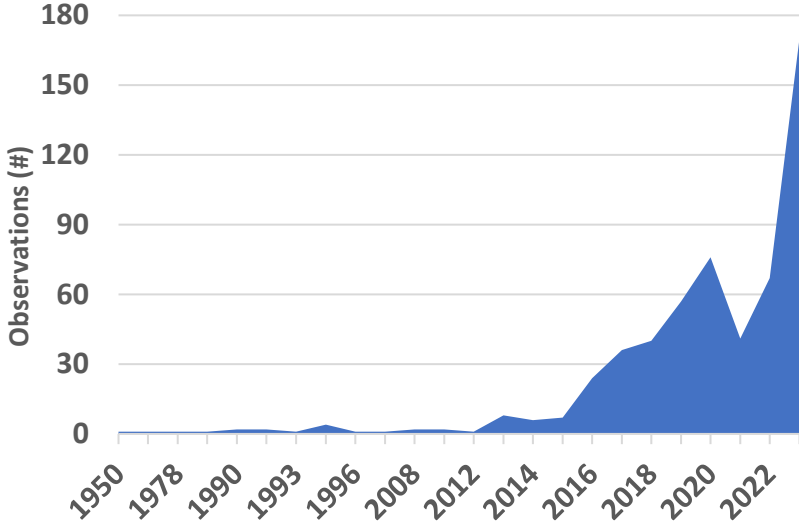
Cody McKee, Elk & Moose Staff Specialist, Nevada Department of Wildlife

May 4, 2024

Moose Observations 1950-2023



1950-Present: 552 Total Observations



Nevada Department of Wildlife
Moose Observation Form

Results of Collar Monitoring

Survival

- 2020-2024, Annual adult survival = 98%
- Adult survival over all 4 years of monitoring is 92%
- Lone cow mortality occurred during parturition in 2023.

Production

- 14 calves were confirmed to reach 1 year of age (recruited) through summer 2022.
- Translates to 73 calves:100 cows/annually.
- One marked cow produced twins across multiple years.

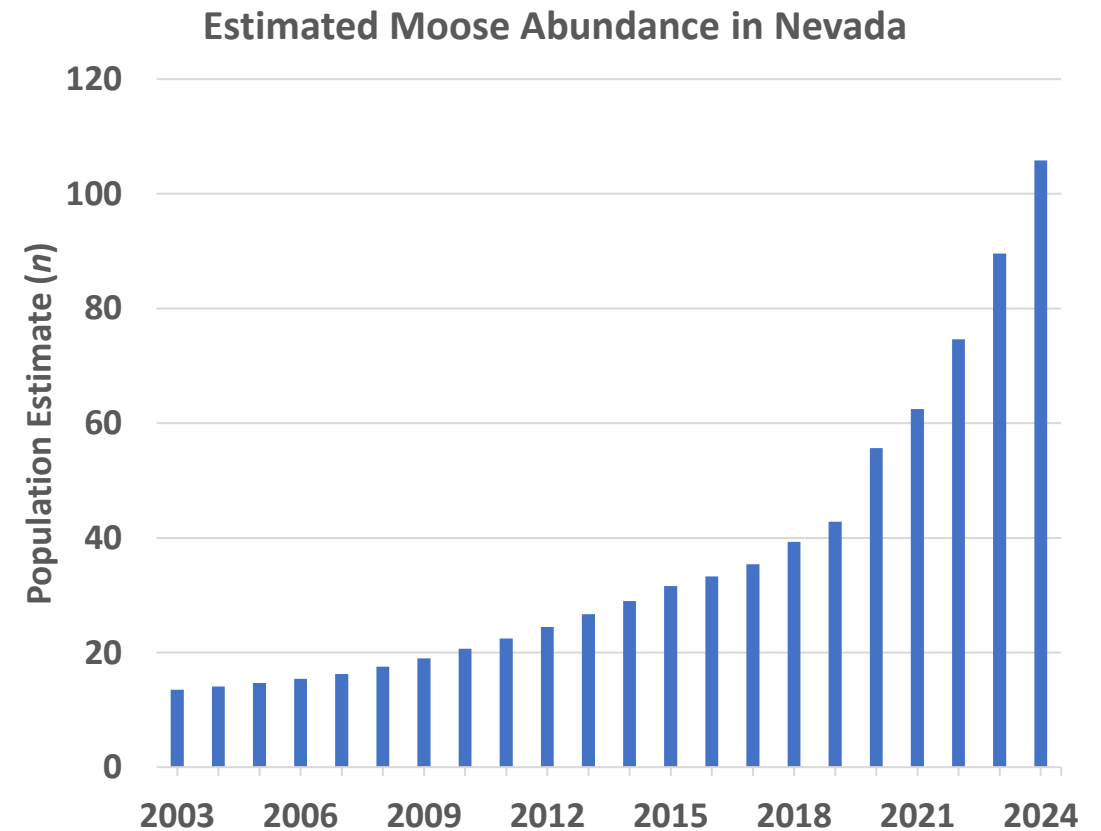


Credit: B. Mayala, Public

Survey Results and Population Estimate

- Most moose observations from aerial surveys are ancillary sightings during deer and elk flights (84% - 2023, 100% - 2024).
- Cumulatively, 55 unique moose were observed during winter 2023. During winter 2024, 29 were observed.

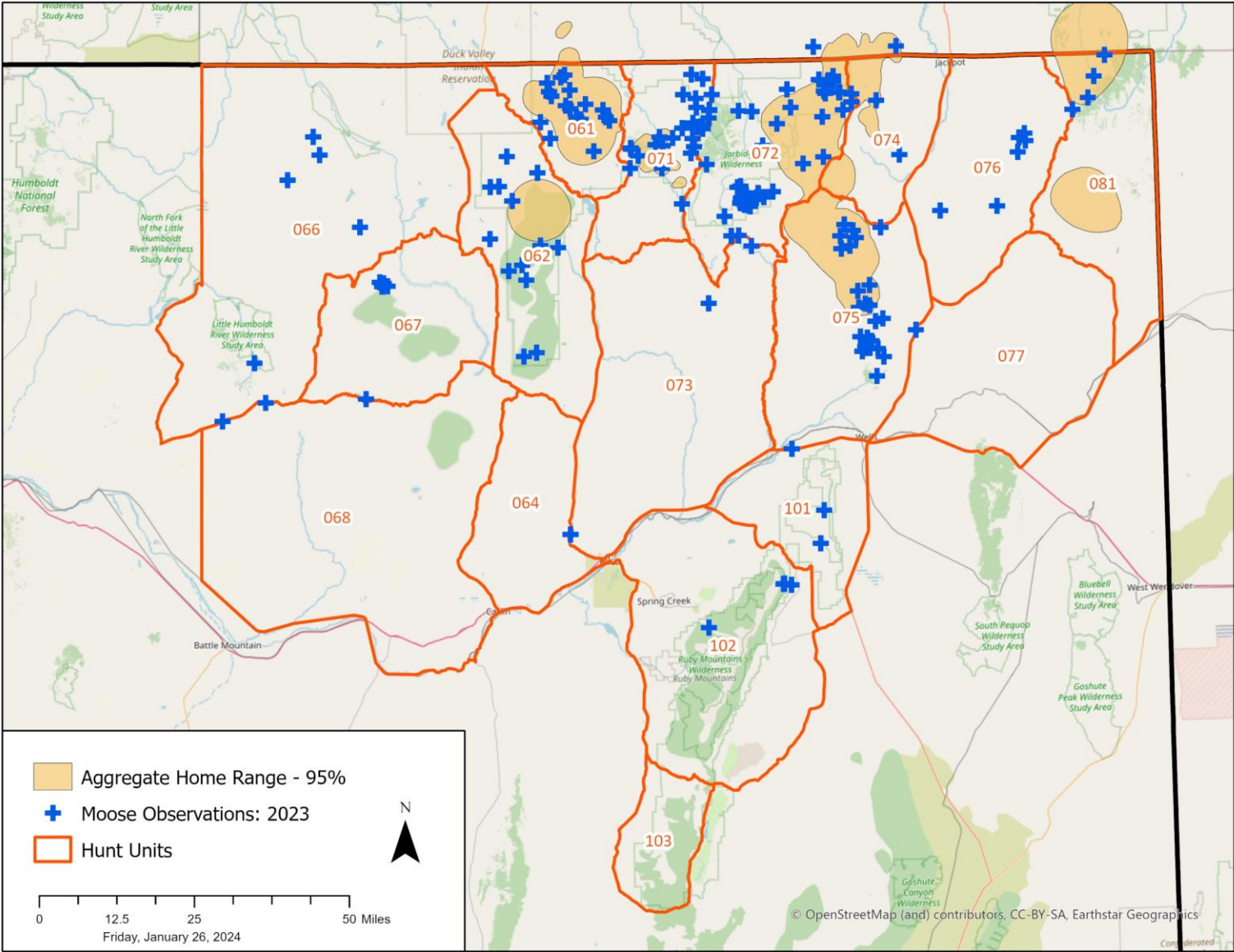
100 bulls:100:cows:42 calves



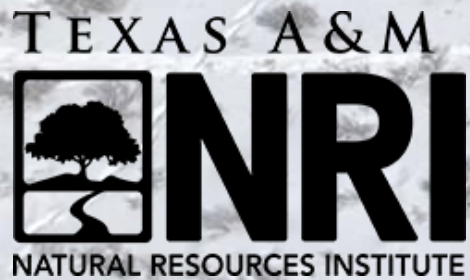
Preliminary Information – Subject to Revision. Not for Citation or Distribution.

Proposed Quota

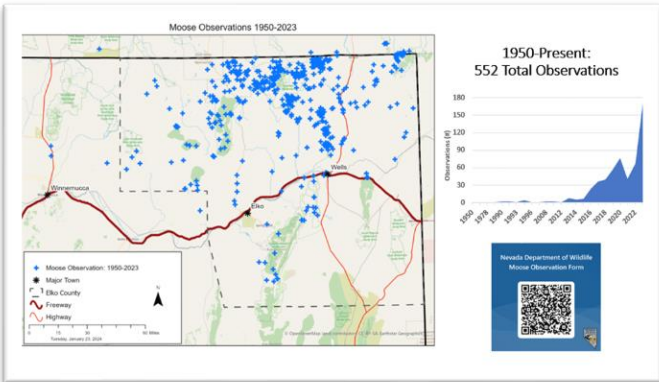
- Hunt Area includes:
 - 061, 062, 064, 066-068,
 - 071-077, 081, 101-103
- Season: Sept. 1 – Nov. 30
- Quota: 2 Antlered Moose



Funding Contributors and Collaborators



Questions?



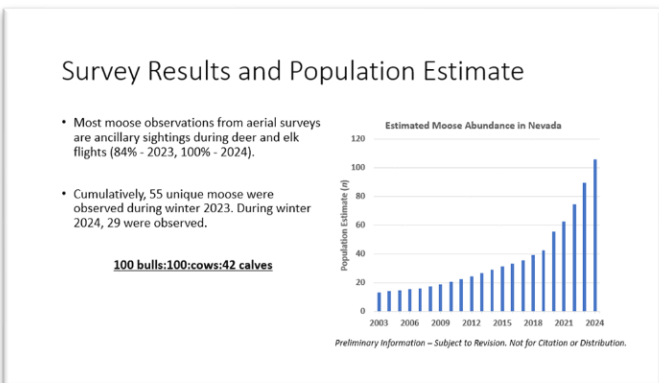
Results of Collar Monitoring

Survival

- 2020-2024, Annual adult survival = 98%
- Adult survival over all 4 years of monitoring is 92%
- Lone cow mortality occurred during parturition in 2023.

Production

- 14 calves were confirmed to reach 1 year of age (recruited) through summer 2022.
- Translates to 73 calves/100 cows/annually.
- One marked cow produced twins across multiple years.



Proposed Quota

- Hunt Area includes:
 - 061, 062, 064, 066-068,
 - 071-077, 081, 101-103
- Season: Sept. 1 – Nov. 30
- Quota: 2 Antlered Moose



cmckee@ndow.org

Credit: D. Metz, Public