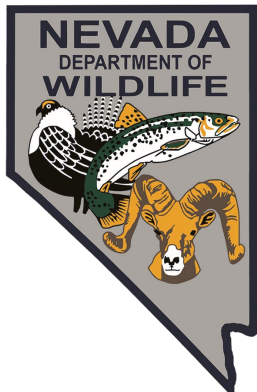
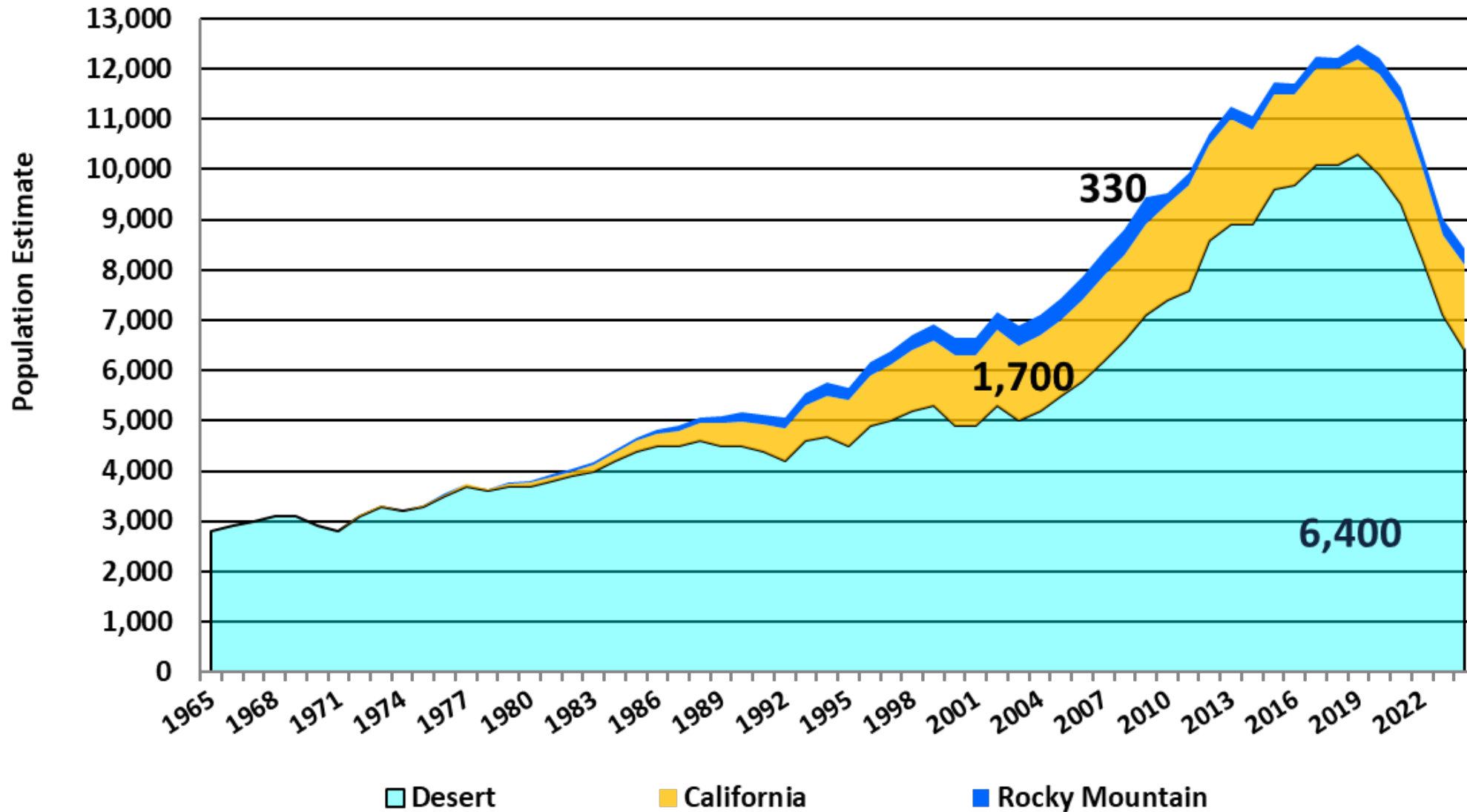
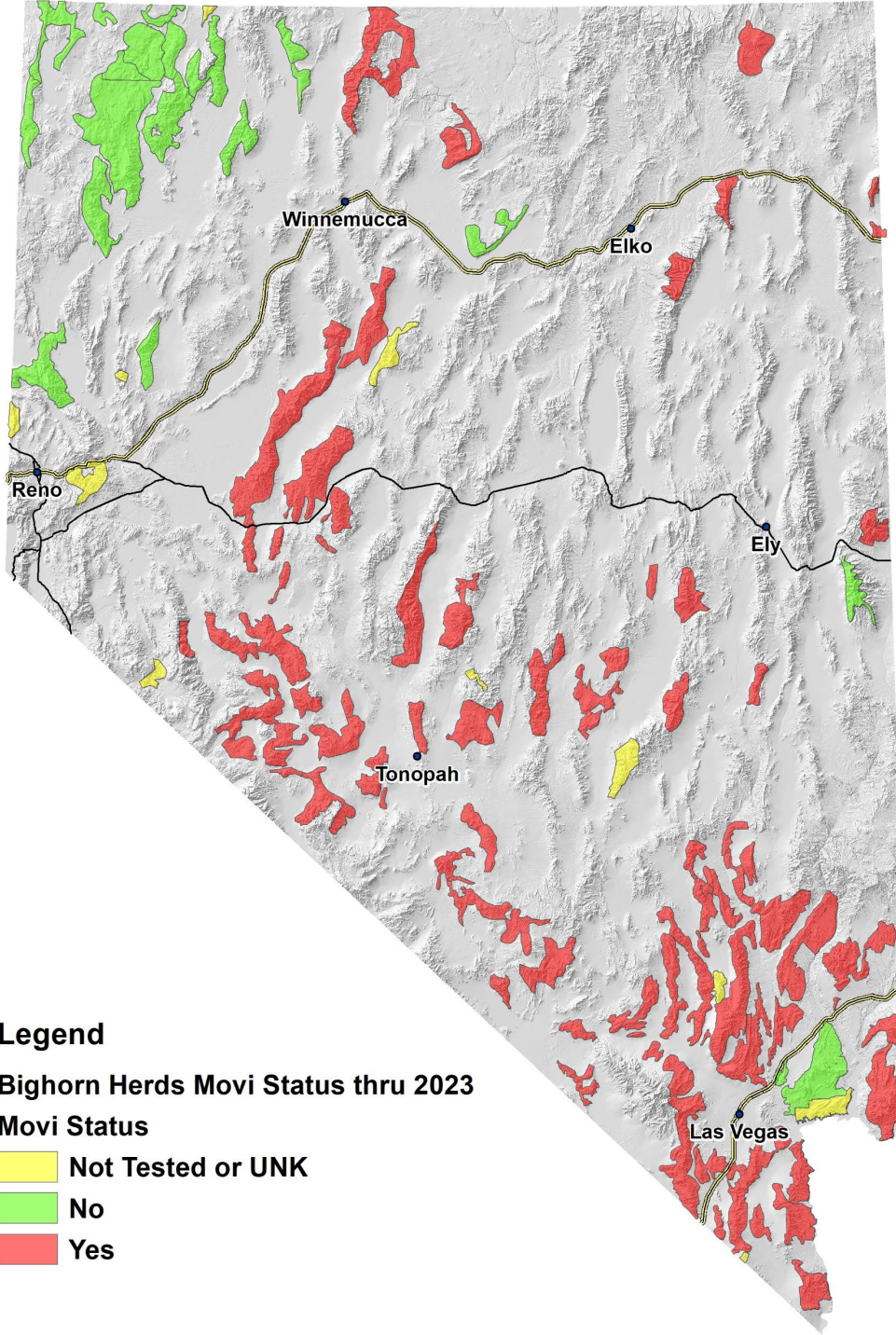


Harvest Trends and 2024 Population Status and Trend for Bighorn Sheep and Mountain Goats



Statewide Bighorn Sheep Subspecies Population Estimates 1965-2024





Legend

Bighorn Herds Movi Status thru 2023

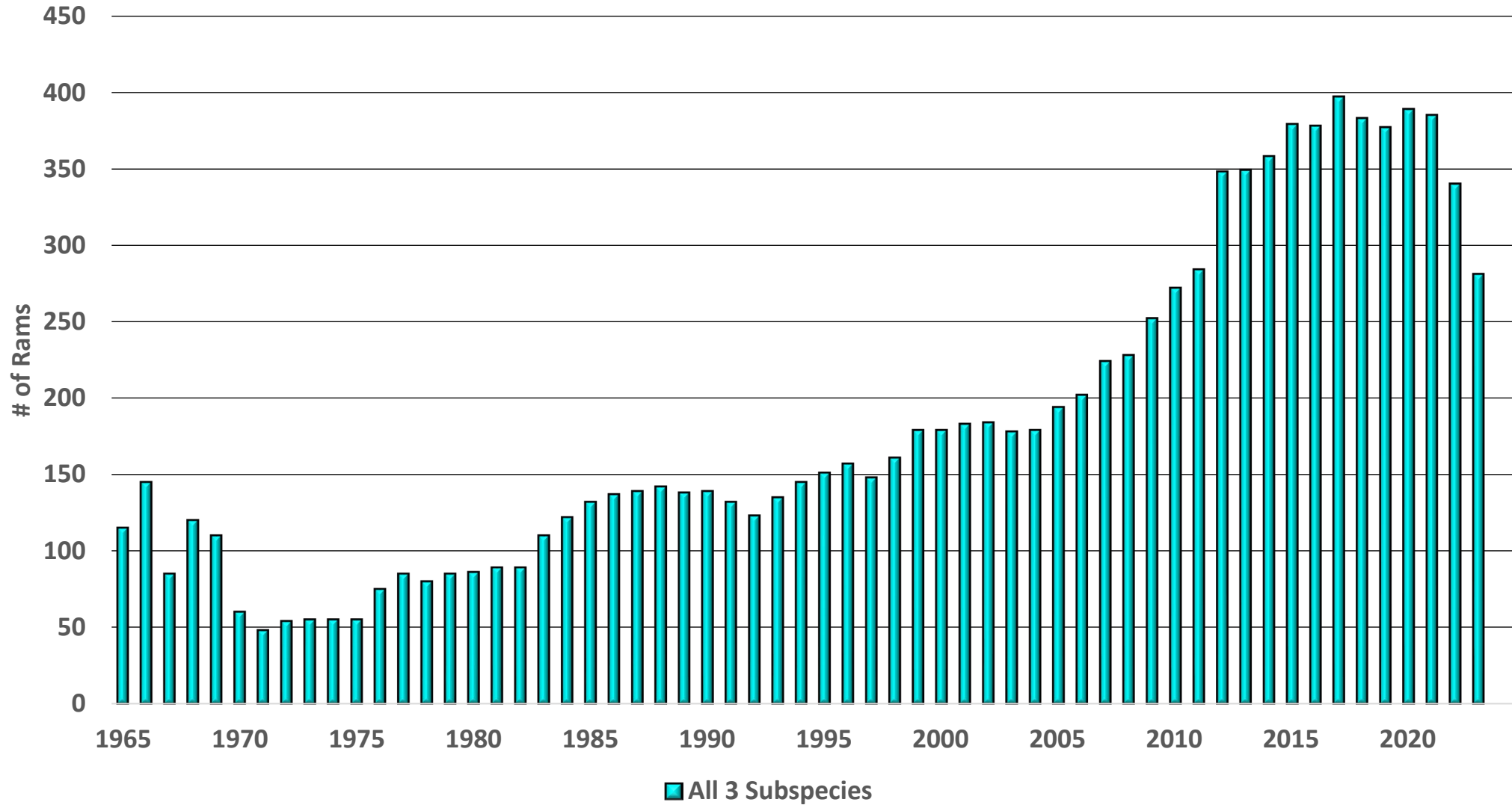
Movi Status

 Not Tested or UNK

 No

 Yes

Nevada Bighorn Ram Tags 1965 - 2023



DESERT BIGHORN RAM STATS BY YEAR - 2003 - 2023

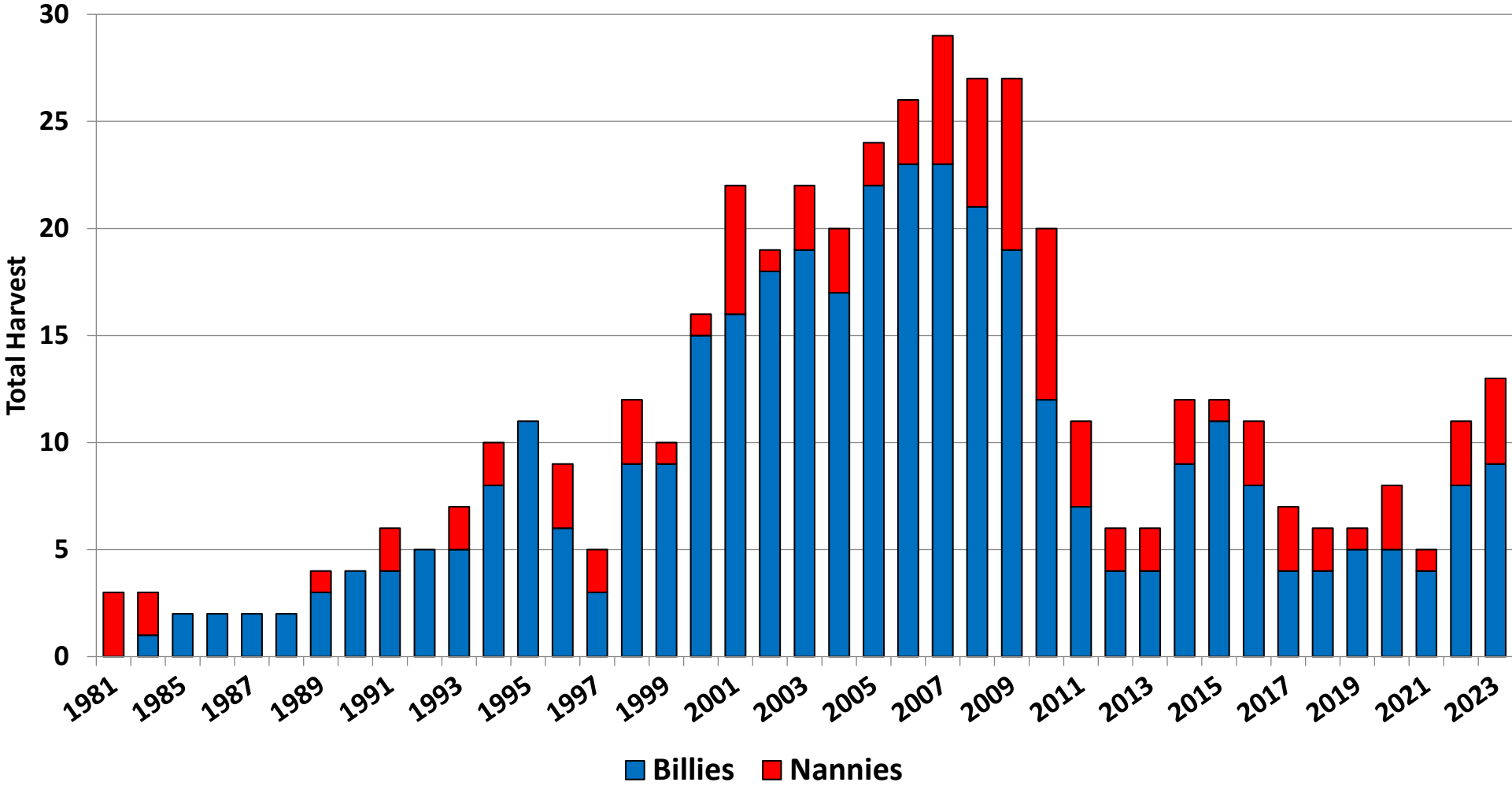
	# Tags	Percent	Average	Average	Average	Maximum	Average	Maximum	Average	Maximum
Year	Used	Success	Days Hunted	Age	B&C Score	B&C Score	Horn Length	Horn Length	Horn Base	Horn Base
2003	133	90%	6.2	6.4	150 7/8	173	31 2/8	38	13 7/8	16 3/8
2004	138	92%	6.1	6.1	150 3/8	174 6/8	31	39 3/8	14	16 5/8
2005	149	91%	4.7	6.5	153 1/8	176 5/8	32	37 6/8	14 1/8	15 6/8
2006	154	92%	5.5	6.7	152 3/8	177 6/8	31 7/8	39 7/8	14 1/8	16 2/8
2007	172	87%	6.1	6.4	149 5/8	172 7/8	31 1/8	37	14	15 6/8
2008	173	88%	5.8	6.3	152 3/8	178 1/8	31 5/8	39 4/8	14 2/8	16
2009	190	91%	5.2	6.2	153 4/8	177 4/8	31 7/8	39	14 2/8	16 2/8
2010*	216	86%	5.6	6.5	153 5/8	189 6/8	32	41	14 1/8	16 1/8
2011	222	87%	4.9	6.6	153 7/8	181 6/8	31 5/8	39 7/8	14 1/8	15 6/8
2012	281	85%	5.6	6.5	154	182 2/8	32 1/8	39 6/8	14 2/8	16 4/8
2013	275	91%	5.7	6.3	153 2/8	182 3/8	31 7/8	43 4/8	14 1/8	15 7/8
2014	287	90%	4.5	6.4	152 1/8	183 3/8	31 6/8	40 2/8	14 1/8	16 6/8
2015	307	93%	4.7	6.4	152 5/8	181 1/8	31 7/8	41 1/8	14 1/8	16 1/8
2016	310	92%	4.3	6.5	153 7/8	182 7/8	32 1/8	41 3/8	14 1/8	16 3/8
2017	319	94%	4.5	6.6	154 4/8	178 7/8	32 2/8	39 5/8	14 2/8	16 1/8
2018	306	91%	5.4	6.4	153 5/8	179 7/8	32 1/8	40 6/8	14 2/8	16
2019	298	90%	5.7	6.9	154 1/8	185	32 2/8	41	14 2/8	16 3/8
2020	304	95%	4.6	6.8	153 6/8	179 1/8	32 1/8	40 4/8	14 1/8	16 1/8
2021	308	86%	5.6	6.9	152 5/8	181 1/8	32 1/8	41 1/8	14	15 6/8
2022	275	84%	6.1	6.8	150 1/8	180 5/8	31 4/8	41 2/8	14	16
2023	222	85%	6.7	6.9	151 1/8	179 2/8	31 4/8	39	14	15 5/8
Total/Avg/Max	5,039	90%	5.3	6.6	152 7/8	189 6/8	31 7/8	43 4/8	14 1/8	16 6/8

* Includes Rocky Mtn Ram harvested in Unit 131

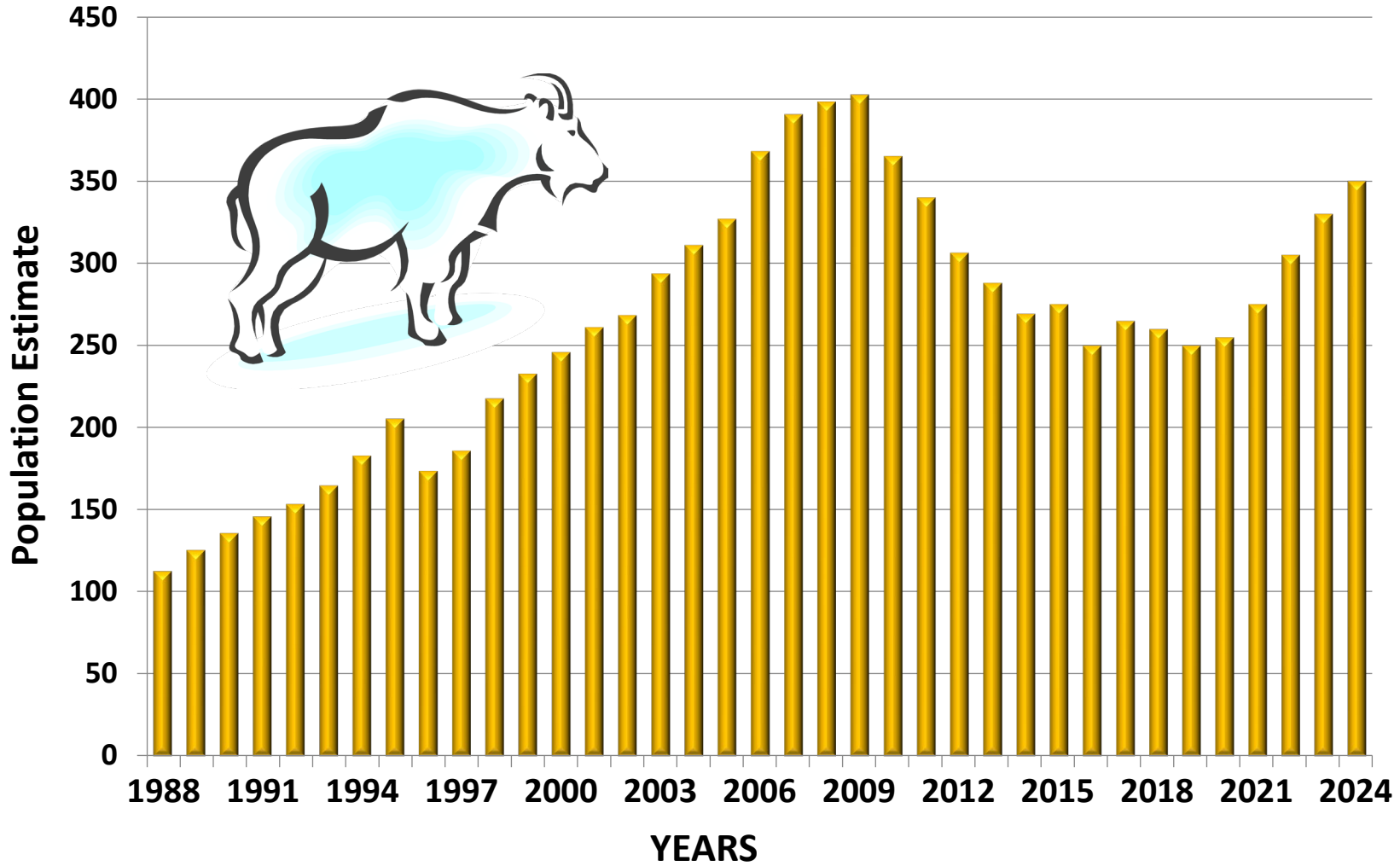
Highlighted for best metric value

Highlighted for lowest metric value

Mountain Goat Harvest in Nevada by Sex, 1981 - 2023



Area 10 Mountain Goat Population



2024 Bighorn and Mountain Goat Quota Recommendations Compared to 2023

Hunt	2024	2023	% Change
Desert Ram ALW	173	211	-18%
Desert Ewe	54	90	-40%
Desert Archery	5	8	-38%
Desert One-Horn Ram	10	12	-17%
Desert Management Ram	5	4	25%
California Ram	41	37	11%
Rocky Mountain Ram	3	2	50%
Mountain Goat	15	13	15%
Overall	306	377	-19%

Specialty Tags not included